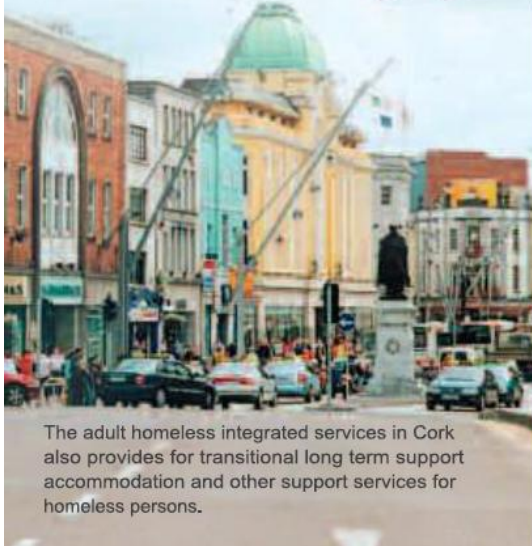


“Each persons journey through homelessness is unique”



The adult homeless integrated services in Cork also provides for transitional long term support accommodation and other support services for homeless persons.

If you find yourself homeless in Cork the first place you should go to is The Homeless Persons Unit, Drinan Street.

This is part of the Adult Homeless Integrated Services.

Here the Community Welfare Officers for homeless persons hold daily public clinics and regular outreach clinics.

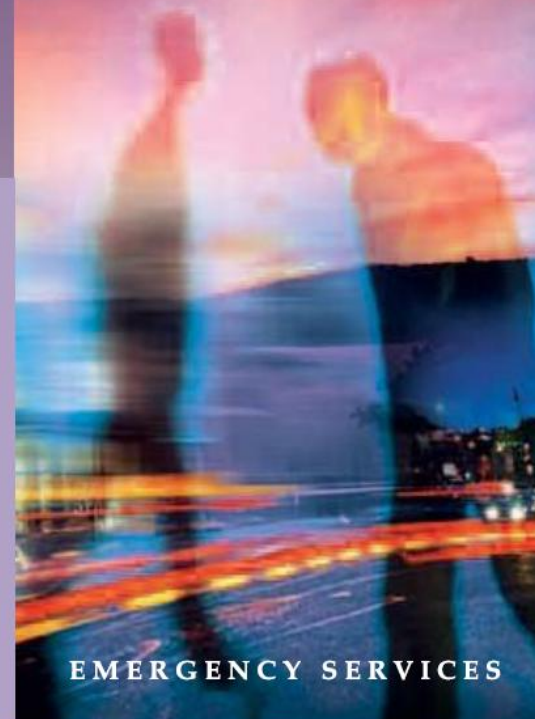
Clinic Times: Monday - Friday 9:30am - 11:30am
Available by phone in Afternoon
(Outreach worker available
Tuesday afternoons by appointment only)

EMERGENCY ACCOMMODATION

Cork Simon Community	021 4278 728
St. Vincent de Paul	021 4317 899
Edel House	021 4274 240
Cuanlee	021 4277 698
Threshold	021 4271 250

HOMELESS *Homeless* in Cork?

We can help you



EMERGENCY SERVICES

CORK CITY COUNCIL OUTREACH WORKER

The Cork City Council Outreach Worker is available to meet people at the following times:

Contact No: 021-4924 374

Day & Time	Location
Tuesday 9:00am-1:00pm	City Hall, Anglesea Street.
2:30pm- 4:00pm (By Appointment Only)	Homeless Persons Unit, Drinan Street, Cork.
Thursday 9:00am-11:00am	City Hall,
2:00pm- 4:00pm	Anglesea Street.
Friday 9:00am-1:00pm	City Hall,
2:00pm- 4:00pm	Anglesea Street.

How to apply for housing

CONTACT THE HOUSING DEPARTMENT IMMEDIATELY AS YOUR APPLICATION FOR HOUSING NEEDS TO BE PROCESSED AS SOON AS POSSIBLE

When applying for housing with Cork City Council you will need to bring the following:

1. PPSN no. for everyone (including children)
2. Birth Certificate for each child on the application
3. Certificate of income for all income earners on the application
4. Passport photo for applicant and joint applicant
5. Proof of address

If you wish to make an application for housing with Cork City Council contact:

Housing Department,
City Hall, Anglesea Street, Cork.
Monday to Friday 9.00am – 4.00 pm.
(open through lunch) Tel: 021- 4966222

Housing Application with Cork County Council contact:
Housing Dept. County Hall, Victoria Cross, Cork.
Monday to Friday 9:00am-5:00pm
(open through lunch)

Southern Division	021 - 427 6891
North Division	022 - 21123
Western Division	023 - 8833328

What is supplementary welfare allowance?

Supplementary Welfare Allowance is:

1. A once off payment to help with the cost of unforeseen exceptional expenses.
2. There are also supplements available, in particular rent, mortgage, diet and heating supplements.

What do I need to bring with me?

It is important to bring identification with you when you are applying for any assistance.

Acceptable identification can include:

- Birth certificate
- Evidence of income
- Passport
- P45
- Social Welfare plastic card
- Medical Card

Medical card/G.P. visit card

The medical card entitles you to free medical treatment by a doctor and a wide range of prescribed medicines and drugs, medical appliances, dental, optical and other medical services.

If you haven't got a medical card the Community Welfare Officer in the Homeless Unit will assist you in making an application. If you are not eligible to qualify for a medical card you will be assessed for a G.P. visit card. A G.P. card entitles you to free G.P. visits only.

Appeals

You have the right of appeal if you are not satisfied with a decision about a payment under the Supplementary Welfare Allowance Scheme, or medical card.
For appeals or further information:
freephone: 1850 742 222

Health Services Available

General Practitioner (Doctor)

The General Practitioner sees clients who are residing in the homeless shelters or are sleeping rough. Both medical card and non-medical cardholders are seen.

Public Health Nurse

The Public Health Nurse sees clients who are staying in the homeless shelters or are sleeping rough.

Psychiatrist/Clinical Psychologist

The Psychiatrist works on an appointment system and provides an outreach service. Referrals are made to the Psychiatrist / Psychologist through the GP (doctor)

Community Mental Health Nurse

The Community Mental Health Nurses provide an outreach service in the homeless shelters. Referrals are made through the Psychiatrist.

Addiction Counsellor

The Addiction Counsellor is available by referral by both statutory and voluntary agencies.

Health Promotion Officer

The Health Promotion Officer does not provide a direct service but works through the service providers. Health promotion activities are usually carried out in a group setting and are developed according to the specific needs of each group.



Homeless in Cork?

We can help you

Services for Under 18's

Liberty Street House, Liberty Street, Cork
Liberty Street House is for young people under 18 years who are out of home or at risk of being so.
Contact no: 021 4921 728

Good Shepherd Services

Riverview, 3 North Mall
Riverview provides emergency accommodation for homeless girls aged 14 – 17 and short to medium term accommodation for girls 15 – 18 years.
Contact No: 021 4304 205

Pathways, 92 Ballyhooley Road, St Luke's Cross, Cork
Pathways provides emergency accommodation for adolescent boys (under 18) who are out of home.
Contact No: 021 4507050



1 The Homeless Persons Unit,

This is part of the Health Service Executive Adult Homeless Integrated Services.

Here the Community Welfare Officers for homeless persons hold daily public clinics and regular outreach clinics.

The Community Welfare Service provides:

- Income Maintenance (Supplementary Welfare Allowance)
- Medical Cards
- Information/Advice
- Referral for emergency accommodation
- Referral to other services

Open: 09.30 - 11.30 (Tuesday afternoon. City Council Outreach Worker: appointment only)

Drinan Street, Cork: 021 4805495



2 Cuanlee Refuge

Cuanlee Refuge provides crisis accommodation and support for women and children, victims of Domestic Violence.

Open every day throughout the year and a 24 hour help line is also provided, Phone 021 4277 698

Cuanlee Refuge, Kyrl's Quay, Cork: 021 4277 698



3 St. Vincent's House

St.. Vincent's House provides Emergency Accommodation for homeless men and is run by St.. Vincent de Paul.

The hostel provides all meals and individual rooms for residents. It also provides a laundry service and men have access to a variety of health care.

St. Vincent's House, Anglesea Terrace, Cork: 021 4317 899



4 Edel House

Good Shepherd Services supports homeless girls, women and children.

Edel House
Edel house provides crisis and medium term accommodation and support for girls, women and children who are homeless. (Boys up to 11 years can be accommodated at Edel House but families with boys over 11 years should contact the Homeless Persons Unit).

Edel House, Grattan Street, Cork: 021 4274 240



5 Cork Simon Community

Emergency Hostel Anderson Quay
The shelter accommodates men and women over 18 years of age. However you must check with Simon staff as there is a high demand for the use of the hostel.

Day Centre
The day-centre service is open Monday – Friday between 8.30 a.m. to 1.00 p.m. The centre provides warm food, hot drinks, showers, laundry service, and can direct you to other services.

Hostel: 021 4278 728
Day Centre: 021 4278 731



6 Threshold Housing Advice Service

Threshold provides free and confidential advice information and support on housing issues. They also help with form filling and Local Authority Housing applications and process rent top up payments with the Department of Social Protection

Advice workers are on hand to deal with queries, arrange viewing with potential landlords in the Private Residential Sector, inform people on their rights and entitlements and help with form filling.
Open: 9.30 - 1.00 & 2.00 - 5.00
Threshold, 22 South Mall, Cork
021 4278 848

