

PAIRC ÁINEASA INIS SIONNACH LANDSCAPE MASTERPLAN

PLANTING SCHEDULES

Table 1: Proposed grass mix

Amenity Grass Seeding	Sowing Rate
Grass for general areas (Coburns High Premier Low Maintenance Mixture, as supplied by Coburns)	As per manufacturers instructions
20% Hard Fescue	
30% Strong Creeping Red Fescue	
15% Smooth Stalked Meadow Grass	
20% Chewings Fescue	
15% Browning Bartrass	
	Total Area: 67305 m ²

Table 2: Proposed Ornamental and Native Planting

Woodland Planting: Total Area: 10356m²
Pioneer Species: 60% of woodland mix & 40% understorey

Common Name	Botanical Name	Transplanted/Pot Size	Spacing m ²	% Mix	Quantity
Hazel	<i>Corylus avellana</i>	1/1, 40-80cm, B, branched, 2 breaks	1m ²	6	622
Holly	<i>Ilex aquifolium</i>	40-60cm, C, 3L, leafy and laterals	1m ²	6	622
Hawthorn	<i>Crataegus monogyna</i>	1+1, 40-60cm, B	1m ²	6	622
Wild Cherry	<i>Prunus avium</i>	1+1, 40-60cm, B	1m ²	6	622
Blackthorn	<i>Prunus spinosa</i>	1+1, 40-60cm, B	1m ²	6	622
Birch	<i>Betula pubescens</i>	1+1, 60-80cm, B	1m ²	10	1037
Alder	<i>Alnus glutinosa</i>	1+1, 60-80cm, B	1m ²	10	1037
Willow	<i>Salix caprea</i>	0/1, 60-80cm, B	1m ²	20	2073
Alder	<i>Alnus glutinosa</i>	1+2, 100-125cm, B	1m ²	10	1037
Downy Birch	<i>Betula pubescens</i>	1+2, 100-125cm, B	1m ²	10	1037
Common Oak	<i>Quercus robur</i>	1+2, 100-125cm, B	1m ²	10	1037

Table 3: Proposed Trees

Common Name	Botanical Name	Transplanted/Pot Size	Spacing m ²	Quantity
Common Alder	<i>Alnus glutinosa</i>	Semi Mature: 4x, 25-30cm girth, min 450 height, 5 breaks, RB	Planting as shown	40
Common Alder	<i>Alnus glutinosa</i>	Extra Heavy Standard: 3x, 18-20cm girth, min 450 height, 5 breaks, RB	Planting as shown	31
Downy Birch	<i>Betula pubescens</i>	Semi Mature: 4x, 25-30cm girth, min 450 height, 5 breaks, RB	Planting as shown	36
Downy Birch	<i>Betula pubescens</i>	Extra Heavy Standard: 3x, 18-20cm girth, min 450 height, 5 breaks, RB	Planting as shown	31
Rowan	<i>Sorbus aucuparia</i>	Extra Heavy Standard: 3x, 18-20cm girth, min 450 height, 5 breaks, RB	Planting as shown	6
Scots Pine	<i>Pinus sylvestris</i>	Semi Mature: 4x, 25-30cm girth, min 450 height, 5 breaks, RB	Planting as shown	44
Scots Pine	<i>Pinus sylvestris</i>	Extra Heavy Standard: 3x, 18-20cm girth, min 450 height, 5 breaks, RB	Planting as shown	27
Oak	<i>Quercus robur</i>	Semi Mature: 4x, 25-30cm girth, min 450 height, 5 breaks, RB	Planting as shown	60
Oak	<i>Quercus robur</i>	Extra Heavy Standard: 3x, 18-20cm girth, min 450 height, 5 breaks, RB	Planting as shown	49
Caucasian Lime	<i>Tilia x euchlora</i>	Extra Heavy Standard: 3x, 18-20cm girth, min 450 height, 5 breaks, RB	Planting as shown	11

Table 4: Proposed Wetland Mix

Wetland Species Area: 8632m²

Common Name	Botanical Name	Form	Sowing Rate	% Mix
Creeping Bent	<i>Agrostis abrotanifera</i>	Seed		6
Yorkshire Fog	<i>Phalopus luteolus</i>	Seed		7
Tufted Hairgrass	<i>Deschampsia cespitosa</i>	Seed		7
Common Bent	<i>Agrostis capillaris</i>	Seed		6
Meadow Foxtail	<i>Alopecurus pratensis</i>	Seed		7
Sweet Vernal-grass	<i>Anthoxanthus odoratum</i>	Seed	As per manufacturers instructions	7
Red Fescue	<i>Festuca rubra</i>	Seed		6
Meadow Buttercup	<i>Ranunculus acris</i>	Seed		6
Devil's-bit Scabious	<i>Succisa pratensis</i>	Seed		6
Roadside Robin	<i>Lythrum salicaria</i>	Seed		6
Greater Bird-foot Trefoil	<i>Lotus pedunculatus</i>	Seed		6
Yellow Iris	<i>Iris pseudacorus</i>	Seed		6
Water Avens	<i>Geum rivale</i>	Seed		6
Meadowsweet	<i>Filipendula ulmaria</i>	Seed		6
Square-stalked St John's-wort	<i>Hypochaeris tetragyna</i>	Seed		6
Flag-bane	<i>Pulicaria dysenterica</i>	Seed		6

Table 5: Proposed Hedge Mix

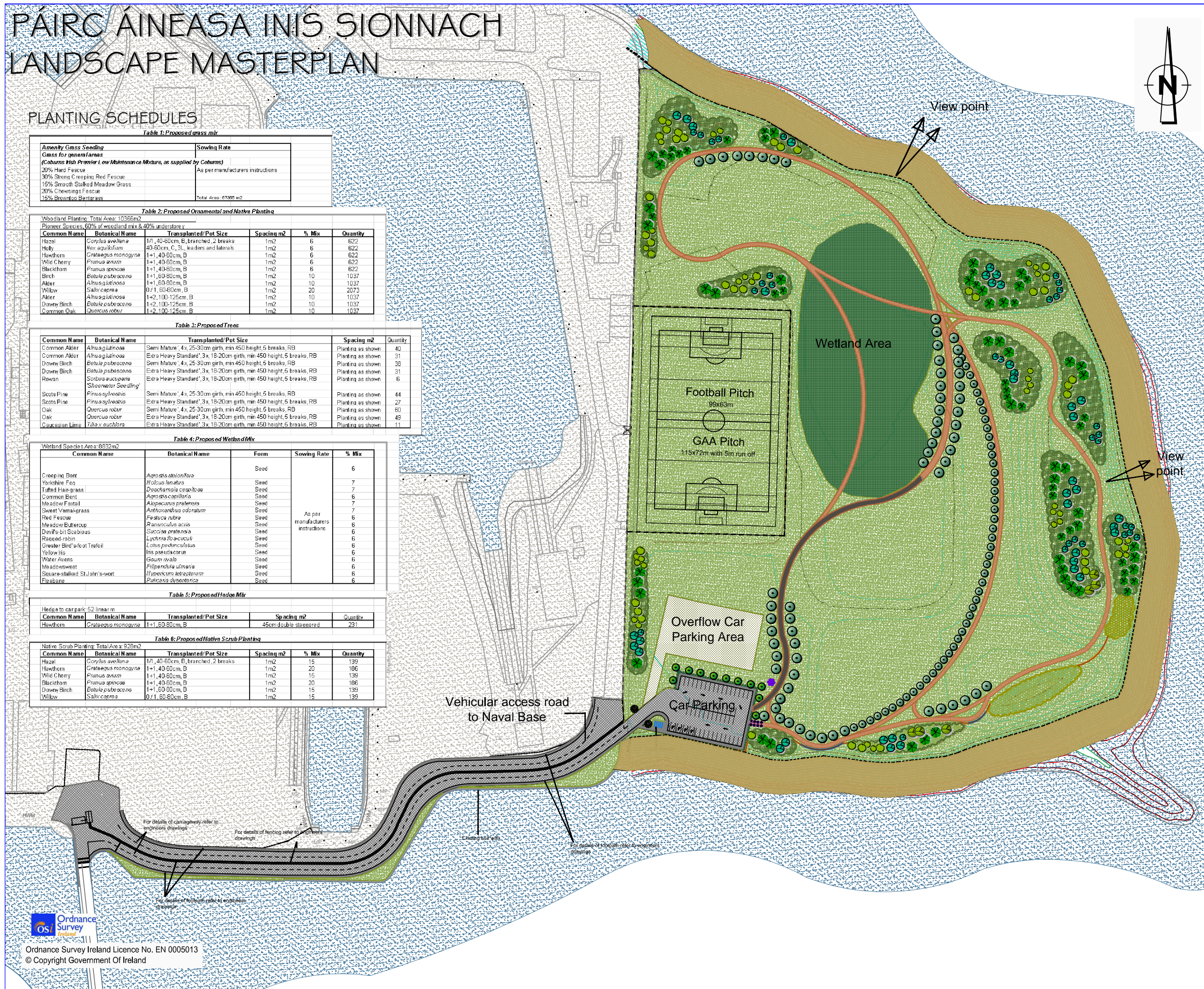
Hedge to car park: 52 linear m

Common Name	Botanical Name	Transplanted/Pot Size	Spacing m ²	Quantity
Hawthorn	<i>Crataegus monogyna</i>	1+1, 60-80cm, B	45cm double staggered	231

Table 6: Proposed Native Scrub Planting

Native Scrub Planting: Total Area: 928m²

Common Name	Botanical Name	Transplanted/Pot Size	Spacing m ²	% Mix	Quantity
Hazel	<i>Corylus avellana</i>	1/1, 40-80cm, B, branched, 2 breaks	1m ²	15	139
Hawthorn	<i>Crataegus monogyna</i>	1+1, 40-80cm, B	1m ²	20	166
Wild Cherry	<i>Prunus avium</i>	1+1, 40-80cm, B	1m ²	15	139
Blackthorn	<i>Prunus spinosa</i>	1+1, 40-80cm, B	1m ²	20	166
Downy Birch	<i>Betula pubescens</i>	1+1, 60-80cm, B	1m ²	15	139
Willow	<i>Salix caprea</i>	0/1, 60-80cm, B	1m ²	15	139



- KEY: GENERAL**
- Proposed Grassed Areas (Refer to Table 1)
 - Reinforced grass area (Refer to Table 1)
 - Proposed Resin Bound Gravel Path 2.0m and 3.0m widths (Refer to Table 1)
 - 200mm Deepening Course
 - 150mm Granular Sub Base (Type 3)
 - Layer of Tender Gravel 10/100
 - Variable depth Granular Sub Base (Type 3)
 - Layer of Tender Gravel 10/100 Protection Geotextile
 - Facing: Precast Concrete County Kerb, leaf flush (width x height x length: 125 x 150 x 100mm. Spacing of 15m or less. To BS EN 12434 Series 1 GD-Vol 1 Specification for Highway)
 - Note: All construction make-up to continue under kerline and approx 250mm beyond to reduce/contain urban settlement

- Proposed Resin Bound Gravel Path 3.0m width as rate up as above with low level color profile/lighting set in path staggered at edges (Refer to Table 2 and Sheet 2 of 5.7)
- Proposed Ornamental and Native planting (Refer to Table 2 and Sheet 2 of 5.7)
- Proposed Native scrub planting (Refer to Table 6 and Sheet 2 of 5.7)
- Proposed Trees (Refer to Key: Tree Species, Table 3 and Sheet 2 of 5.7)
- Proposed Wetland Areas (Refer to Table 4 and Sheet 2 of 5.7) Location and area 10C
- Proposed Double Staggered Hedge to car park (Refer to Table 5 and Sheet 2 of 5.7)
- Proposed Football GAA Pitch
- Proposed 1.4m high chestnut pale fencing to prevent pedestrian and dog access to Oystercatcher roosts (Refer to Sheet 1 of 5.7)
- Proposed 3.0m maximum height security fence to Football/GAA pitch with gate to Naval Base (Refer to Sheet 1 of 5.7)
- Proposed bird viewing screens 1.8m high timber close boarded fence with sliding pane to permit viewing (Refer to Sheet 1 of 5.7)
- Proposed entrance features in steelwork maximum height 5m (Refer to Sheet 1 of 5.7)
- Existing natural base
- Proposed Cycle Stands: Sheffield Type Cycle Stands (Refer to Sheet 1 of 5.7)
- Electrode from arc furnace clean treated and erected as bollards at footpath entrance
- Industrial plant feature focal point shot blasted 'Blacksmith's Hammer'
- Proposed gate for access from the Naval Base to the sports pitch only
- Proposed Perimeter Engineered Structure rock armour refer to engineers drawing for details

- KEY: TREE SPECIES**
- Alnus glutinosa* (Common Alder) 'Semi Mature'
 - Betula pubescens* (Downy Birch) 'Semi Mature'
 - Betula pubescens* (Downy Birch) 'Extra Heavy Standard'
 - Sorbus aucuparia* 'Sheerwater Seeding' 'Extra Heavy Standard'
 - Pinus sylvestris* (Scots Pine) 'Semi Mature'
 - Pinus sylvestris* (Scots Pine) 'Extra Heavy Standard'
 - Quercus robur* (Oak) 'Semi Mature'
 - Quercus robur* (Oak) 'Extra Heavy Standard'
 - Tilia x euchlora* (Caucasian Lime) 'Extra Heavy Standard'

Title
LANDSCAPE
MASTERPLAN

Figure 5.7

File Ref : MCE0734 Figure 5.7
Date : October 2013 Rev : F02

East Tip Remediation Project

EAST TIP
REMEDIAION
PROJECT



VIEWPOINT 1 LAKE ROAD EXISTING VIEW
Recommended viewing distance when viewed with both eyes: 45 cm



Lens Focal Length: 50 mm
Camera Sensor: Full Frame 14.8 mm x 22.2 mm
Camera Height: 1.7 m above ground level
Camera: Canon EOS 1100D digital SLR

Date: 10-Jan-13
Time: 15:22



VIEWPOINT 1 LAKE ROAD PROPOSED VIEW
Recommended viewing distance when viewed with both eyes: 45 cm



Lens Focal Length: 50 mm
Camera Sensor: Full Frame 14.8 mm x 22.2 mm
Camera Height: 1.7 m above ground level
Camera: Canon EOS 1100D digital SLR

Date: 10-Jan-13
Time: 15:22

