

## *Buy only what you need.*

*By calculating the correct amount of paint needed for a specific task area, you can reduce the amount of leftover paint.*

*Your retailer should be able to assist you with your calculations when buying the paint.*



## *How to use up left over paint*

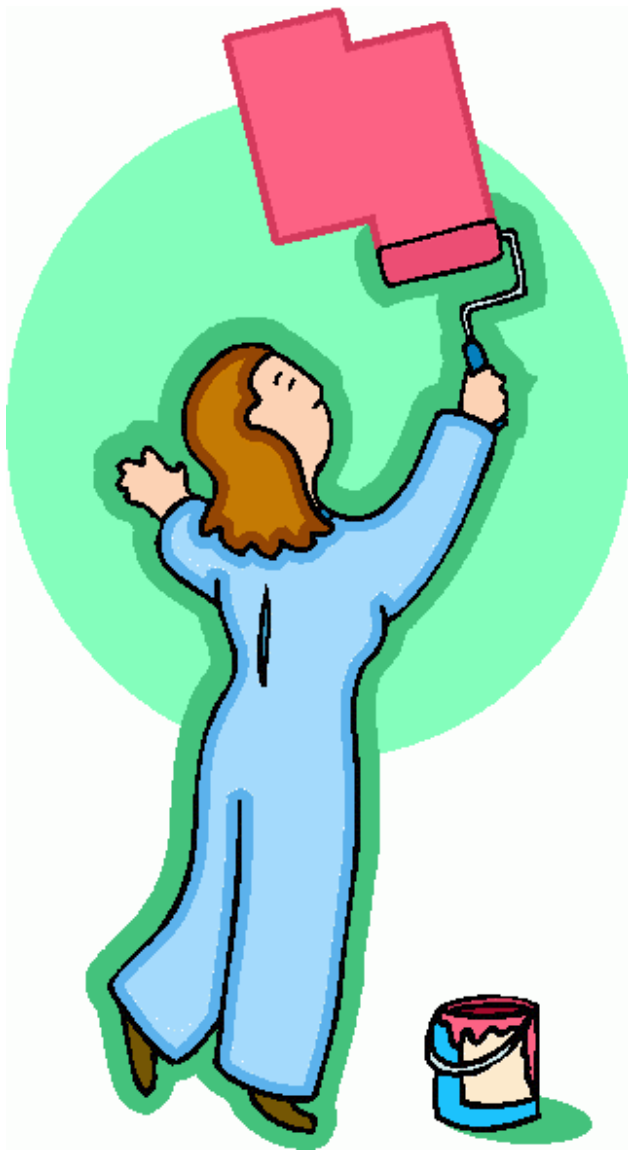
*Continue painting until all the paint is gone, those additional coats improve your work.*

*If you still have leftover paint, check if there is another area that's requires painting now while the paint is still fresh.*

*Consider using leftover paint as an undercoat (not as a primer) if you have a bright colored wall needing to be painted a lighter colour.*

*By not painting directly out of the paint can, you can minimize introducing mould or bacteria into the paint resulting in the spoiling of leftover paint, so, try pouring the paint into another container to keep the main bulk of paint fresh.*

*Store paint properly with the lid secured.*



## *STILL HAVE LEFT COVERS*

*Sometimes it is not possible to use all of the paint for a given project.*

*Ask yourself 'Should I keep a small amount of paint for touch ups'?*

*To help extend the life of your paint, follow these tips:*

*Cover the opening of the paint can with plastic wrap before closing the lid. This will help create an additional seal when the can is closed.*

*Use a mallet instead of a hammer to close a paint can, creating a good seal as a hammers can damage the rim of the paint can,. Try placing a small rag over the paint can lid and gently using a mallet to tap the lid closed, you will avoid damaging the rim.*

*Try storing the paint can upside . [ MAKE SURE YOU HAVE SEALED THE LID] This can create a tight seal around the lid by preventing air from entering the paint can so the paint will not dry out.*

*Store in a cool, dry area.*

*The guide instructions are not just empty words. Extremes in temperature will spoil paint and make it unusable. Keep away from freezing and hot temperatures in garages and sheds.*

*Write on the lid of each paint can, the date opened, the colour, brand and the room it is for.*

*This will help you locate paint needed for touch ups and future purchases.*

*This also helps with identifying paint that is no longer needed and can be donated and reused, or properly disposed at your civic amenity site.*

*Leave the original label on the paint can. By leaving the original label on the paint can, you will alleviate any questions as to the type of paint in the can should you try to donate the paint for reuse (through an exchange program) or for disposal at your local civic amenity site.*

*Do not pour anything else in the paint. No matter how you use or dispose of the leftover paint, do not contaminate it by pouring anything else into the can. If contaminated, the paint will be difficult to donate or dispose of properly.*

*Store paint in a safe location and keep leftover paint in a location out of reach of children and pets.*

*Reuse your paint brushes and rollers by cleaning them in a bucket straight away.*

*Be sure to follow any specific directions on the manufacturer's label of the paint and/or paint related products.*

*Don't want to store the paint*

## *Reuse Options*

*Check if there is Reuse and recycling programs in your community.*

*If you have leftover, unwanted paint in good condition, consider contacting a local charity, or church to see if they will accept paint for reuse. Is there a "Swap Shop" in your neighbourhood?*

## *Final Disposal*

*Take your residual paint waste to the civic amenity site.*

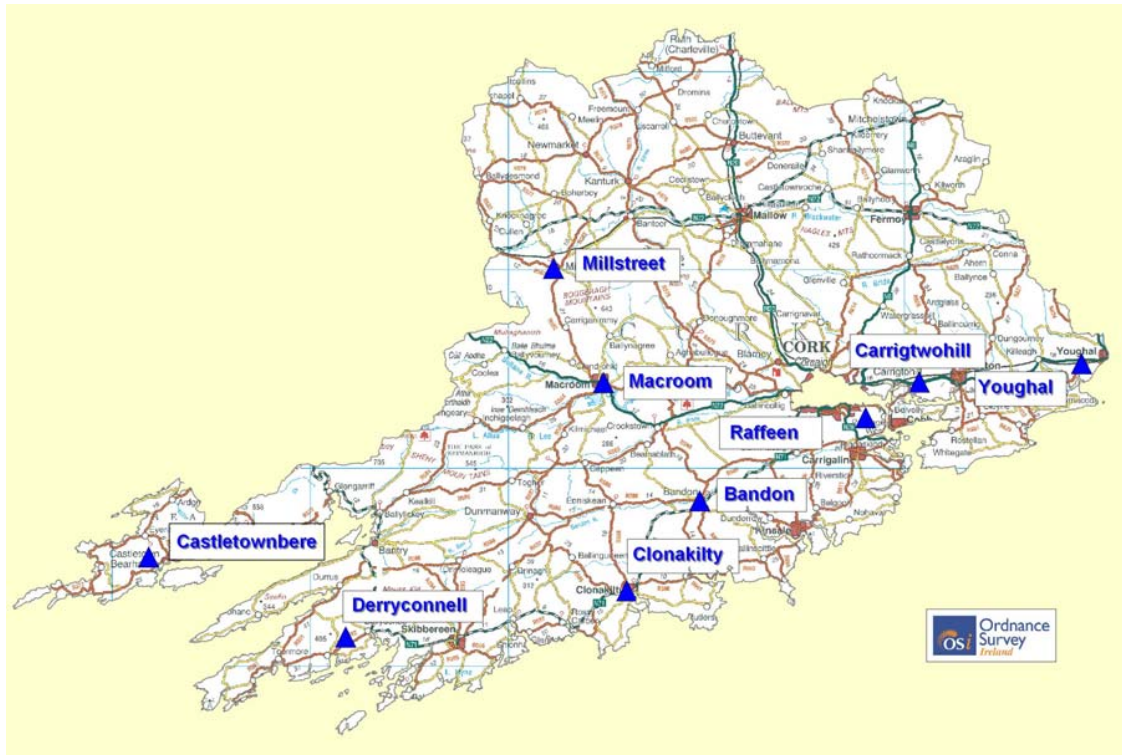
*If it is fresh and usable than it may be reused by someone else*

*If the paint is unusable check with the Civic Amenity Site to see if it can be disposed at this location.*

*Cork Co. Council and Cork City Council operate a free household hazardous waste service called the CHEMCAR.*

*See information on this service and related collection schedule on this web site, local libraries and Council Area Offices in your town.*





## *Cork County Council Recycling Centres*

1. **Millstreet Recycling Centre (029 30971)**  
**Fax: 029 30966**  
 Station Road, Millstreet, Co Cork  
 Tues & Wed: 9.00am – 5.30pm  
 Thurs & Fri: 10.00am – 7.30pm  
 Sat: 10.00am – 5.00pm
2. **Macroom Civic Amenity Site (026 43721)**  
 Codrum, Macroom, Co Cork  
 Mon – Sat: 9.00am – 4.30pm
3. **Youghal Civic Amenity Site & Landfill (024 91084 / 024 93834)**  
 Mudlands, Youghal, Co. Cork  
 Mon, Wed, Thurs, Fri and Sat: 9.00am – 4.30pm
4. **East Cork Civic Amenity Site & Landfill (021 4533934 / 021 4883936)**  
**Fax: 021 4533880**  
 Rosmore, Carrigtwohill, Co. Cork  
 Mon – Fri: 8.30am – 5.00pm  
 Sat: 8.30am – 1.00pm
5. **Rafeen Recycling Centre & Landfill (021 4842082 / 021 4859350)**  
 Kerry Currihy, Monkstown, Co. Cork

Mon – Sat: 9.00am – 4.30pm

- 6. Bandon Recycling Centre (023 43371)**  
Knockaveale, Bandon, Co. Cork  
Mon, Tues, Thurs, Fri and Sat: 9.00am – 4.30pm
- 7. Clonakilty Waste and Recycling Centre (023 50982)**  
Clogheen Industrial Estate, Clonakilty, Co. Cork  
Mon – Sat: 9.00am – 4.30pm  
Closed: Bank Holidays
- 8. Derryconnell Landfill & Civic Amenity Site (028 37048)**  
Schull, Co. Cork  
Mon – Fri: 9.00am – 5.00pm  
Sat: 9.00am – 1.00pm
- 9. Castletownbere Waste Transfer Station (027 70126)**  
Foilldarrig, Castletownbere, Co. Cork  
Mon – Fri: 9.00am – 4.30pm  
Sat: 9.00am – 12.30pm

## *Cork City Council Recycling Centres*

- 1. Kinsale Road Civic Amenity Site & Landfill (021 4705911)**  
Kinsale Road, Cork  
Mon – Fri: 8.00am – 3.45pm  
Sat: 8.00am – 12.45pm

Please note that the wastes accepted vary from centre to centre. Please contact your local authority for more information and confirmation of the materials accepted at each site.

