



Carrigaline

Transportation and Public Realm
Enhancement Plan (TPREP)

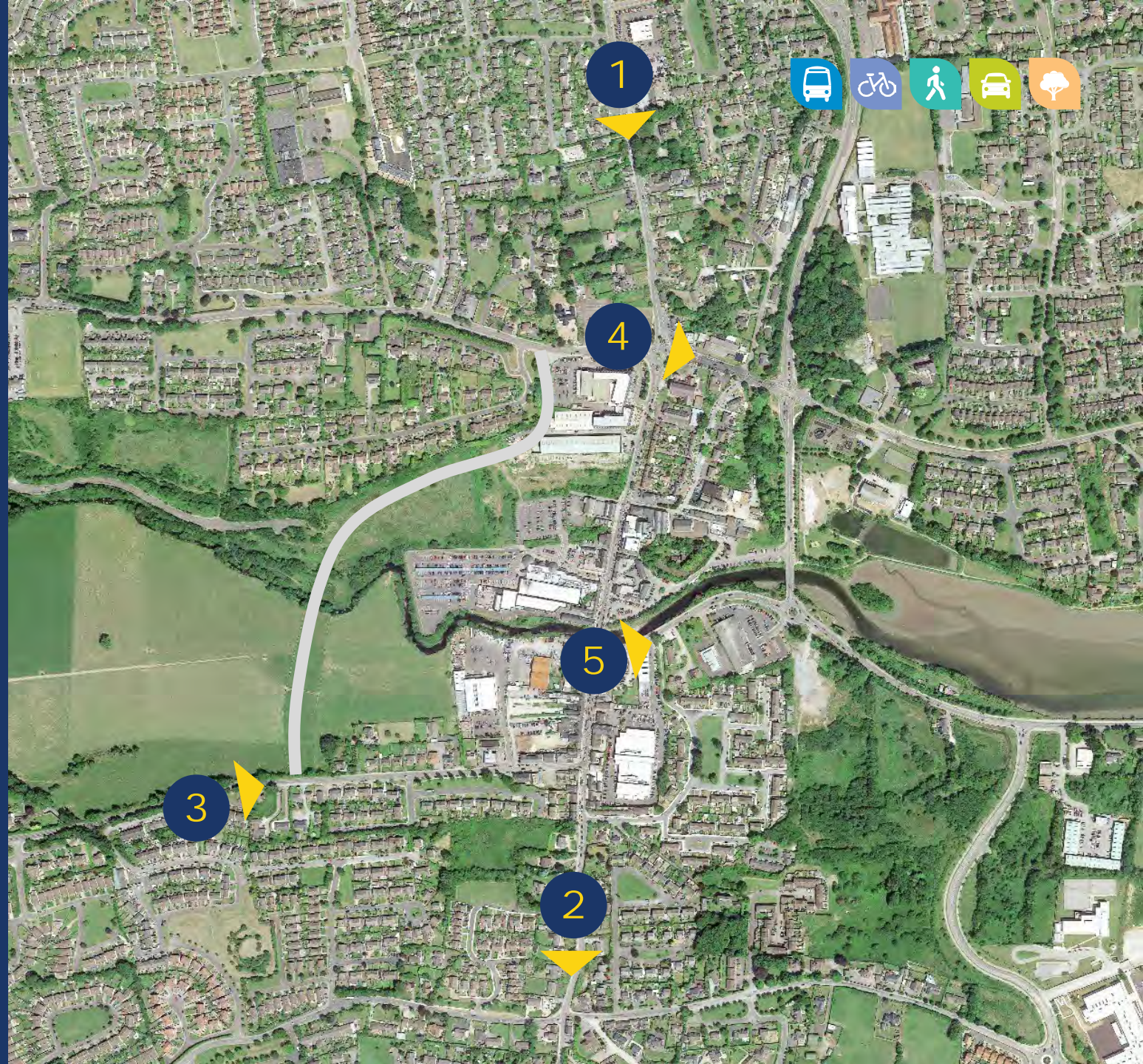
Phase 1B

Proposed Views (Montages)



Proposed Views location Map

1. R611 Cork Road At Maxol
Looking South
2. Fosters Cross Looking South in
the Direction of Rose Hill
3. R611 Kilmoney Road Lower
Looking East to the Pottery Road
Junction
4. R613 Church Road Looking East
5. R612 Strand Road at the
entrance to Dunnes Stores
Looking East





Existing View



R611 Cork Road At Maxol Looking South

View 1



Proposed View



Existing View



Fosters Cross Looking South in the Direction of Rose Hill

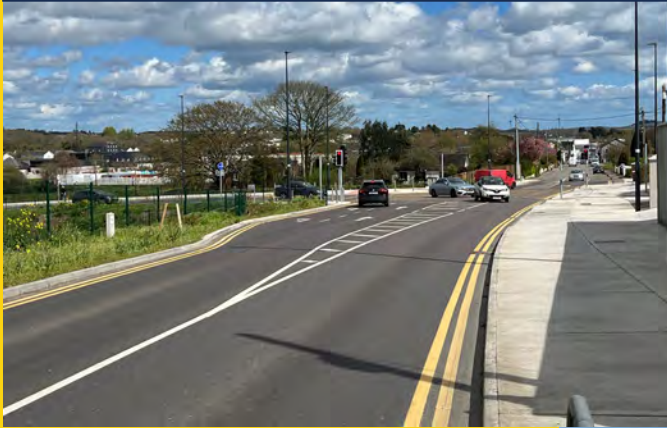
View 2



Proposed View



Existing View



R611 Kilmoney Road
Lower Looking East to
the Pottery Road
Junction

View 3



Proposed View



Existing View



R613 Church Road
Looking East



View 4

Proposed View



Existing View



R612 Strand Road at the entrance to Dunnes Stores Looking East

View 5



Proposed View



Carrigaline

**Transportation and Public Realm
Enhancement Plan (TPREP)**

Phase 1B