



## Community Smoke Alarm Scheme – Application Form

**Name of Community /Voluntary Group:**  
(Responsible for Installing Alarms) \_\_\_\_\_

**Group Co –Ordinator:** \_\_\_\_\_ **Phone No.:** \_\_\_\_\_

**Householder Name:** \_\_\_\_\_

**Householder Signature:** \_\_\_\_\_ **Date:** \_\_\_\_\_

**Householder Address**  
(Including Eircode): \_\_\_\_\_  
\_\_\_\_\_ **Eircode:** \_\_\_\_\_

**Details:** Elderly  Person with Disability  Living Alone

Other: \_\_\_\_\_

Bungalow  Two Storey  Apartment

### For Fire Officer Use

**Smoke Alarm Details** Install \_\_\_ Ionisation Smoke Alarm in Hallway / 1<sup>st</sup> Floor Landing / 2<sup>nd</sup> Floor Landing  
Install \_\_\_ Optical Smoke Alarm in Hallway

**Fire Officer's**  
**Signature:** \_\_\_\_\_ **Date** \_\_\_\_\_

**Note:**

Smoke Alarm Register to be updated  
Copy of fully completed form to be issued with all smoke alarms.

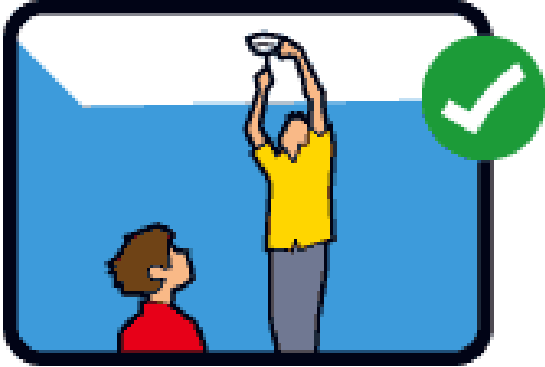
**Fire Officer Contact** Tel: 021 4307044  
**Details:** email: fireinfo@corkcoco.ie

**Privacy & Data Protection:**

Personal information collected by Cork County Council is done so in order for us to process your application. Legally we can process this information as we believe it is necessary for the performance of a task carried out in the public interest or in the exercise of official authority vested in Cork County Council. The protection of your personal data is a key priority for the Council and your data will be processed in line with our Privacy policy which is available at <https://www.corkcoco.ie/Privacy-Policy> or hardcopy from our offices at County Hall, Carrigrohane Road Cork, Ireland. Should you have any questions about our privacy policy or the information we hold about you please contact us by email to [dpo@corkcoco.ie](mailto:dpo@corkcoco.ie) or write to us at Data Protection Officer, Cork County Council, County Hall, Carrigrohane Road Cork, Ireland.



## Smoke Alarm Installation Guidance



### General Recommendations

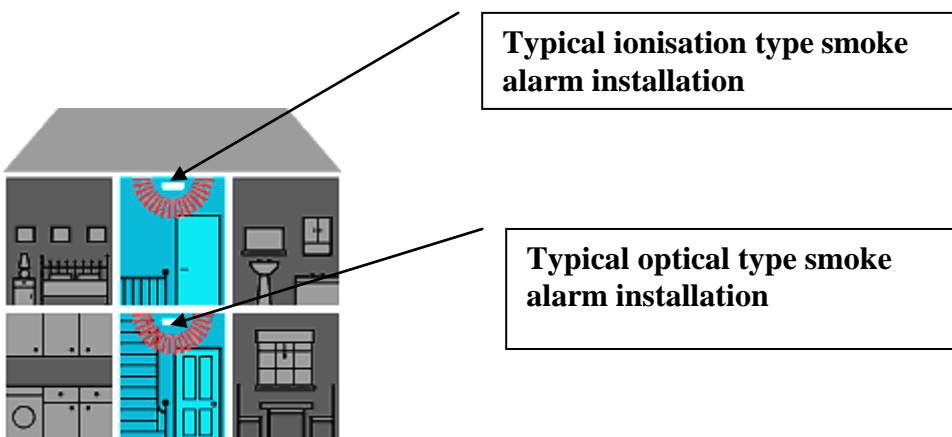
- Ceiling mounted
- At least 500mm from walls and obstructions
- Position so they can be heard and can wake you
- Ensure smoke alarms are installed and activated in accordance with manufacturer's instructions

### Bungalow

- Minimum 1 smoke alarm
- Ionisation smoke alarm within 3metres from bedroom
- Smoke alarm should be between living area and sleeping area
- No point on the hallway should exceed 7m from a smoke alarm

### Standard Two Storey + house

- Smoke alarm at each level
- Ionisation type smoke alarm within stairway at upper level sleeping areas. Distance from bedroom door to be within 3metres
- Optical smoke alarm within hallway at ground level



- Once installed all smoke alarms should be tested weekly