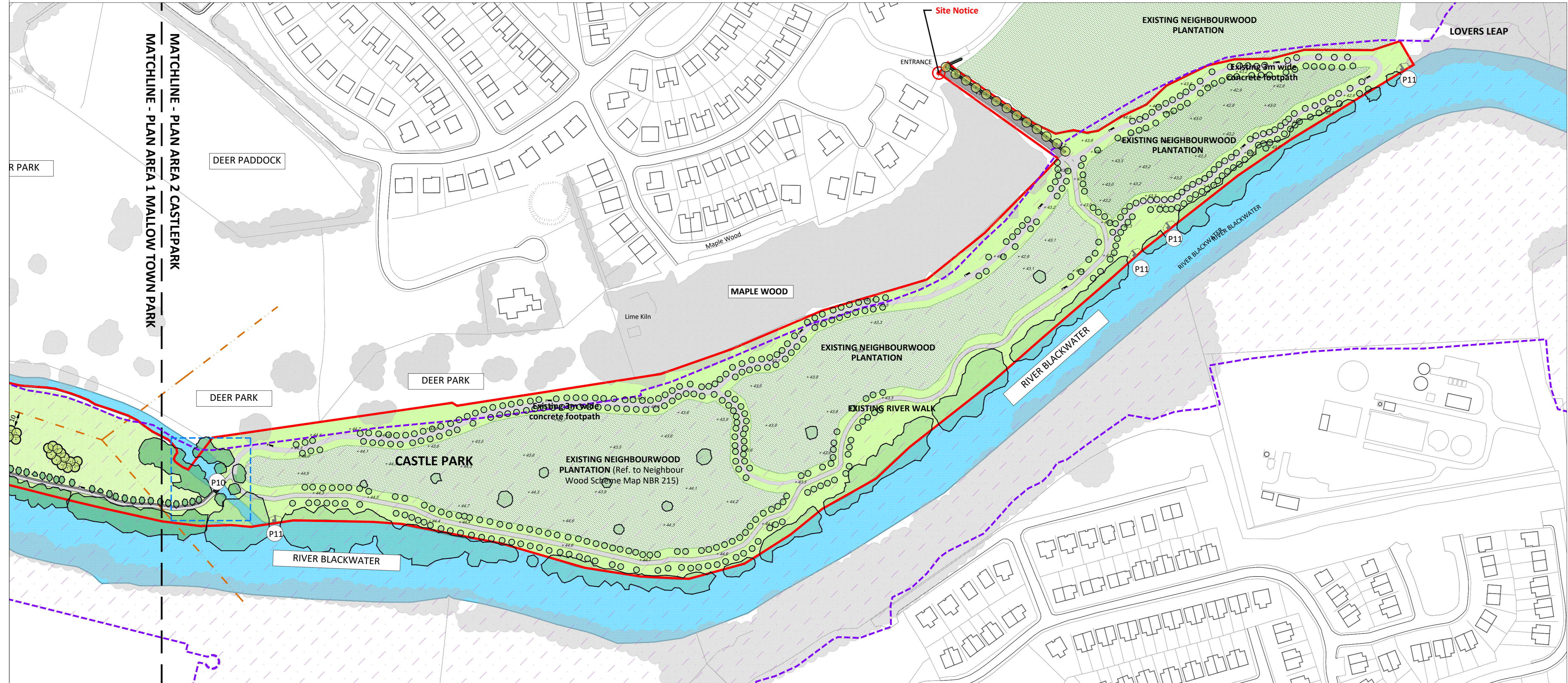




- TOWN PARK EXISTING ELEMENTS:**
- E1 - Bridge to be retained and protected
  - E2 - Soccer Pitch
  - E3 - Rugby Training Area
  - E4 - GAA Pitch to be re-positioned further north
  - E5 - Existing amenity path (concrete finish)
- PROPOSED WORKS:**
- P1 - Entrance 1**, refer to drawing 6615\_375:
    - Upgraded entrance to junction and Mallow bridge
    - Pedestrian access to Mallow town park and river walk way
  - P2 - Entrance 2**, refer to drawing 6615\_376:
    - Pedestrian Access to occasional car park and Town Park
    - Controlled vehicular access to Car Park and Multi-Events area
    - Access to Town Park
  - P3 - Entrance 3**, refer to drawing 6615\_377:
    - Pedestrian stepped access widened to 3m
    - Connection to Town Park
  - P4 - Entrance 5**, refer to drawing 6615\_378:
    - Existing pedestrian entrance to be upgraded
    - Connect from St. James Avenue
    - Connection to Town Park and River walk way
    - Incorporate Bishop Casey remembrance plaque and interpretative panel
  - P5 - Entrance 5**, refer to drawing 6615\_379:
    - Pedestrian access to tree lined avenue
    - Connecting Play area (Skate park to Town Park)
  - P6 - Entrance 6**, refer to drawing 6615\_380:
    - Pedestrian access to Car park and Town Park pitches
    - Controlled vehicular access to parking area
  - P7 - Skate Park**, refer to drawing 6615\_383:
    - Removal of existing poor quality/outdated play equipment
    - Create space by introducing a skate plaza and a new play area
  - P8 - Pump Track**, refer to drawing 6615\_385
  - P9 - N20 Ramped access**, refer to drawing 6615\_381
  - P10 - Proposed 3m wide pedestrian bridge** to match other existing bridge in Town Park
  - P11 - Angling Stands**, refer to drawing 6615\_309
  - P12 - Reinforced grass**, seasonal event parking area (114 spaces)
  - P13 - Proposed Town Park parking** (96 spaces)
  - P14 - Multi-Event area** (reinforced grass)
  - P15 - Relocated and extended GAA pitch** (incl. removal of existing mound)
  - P16 - Training area**
  - P17 - Existing 2m wide concrete footpath** widened to 3m wide concrete shared path
  - P18 - Surface water detention**
- PEDESTRIAN CONNECTIONS TO MAIN STREET/ TOWN CENTRE :**
- C1 - Connect Town Park Pitches area to Mallow Main Street through Emmet Street, Walking distance: Approx. 250m, 3 minutes
  - C2 - Connects Mallow Main Street to Town Park through St. James Avenue, Walking distance: Approx. 190m, 2.5 minutes
  - C3 - Connects Mallow Town Park to Mallow Library and Main Street through Lidl Car Park, Walking distance: Approx. 135m, 2 minutes
  - C4 - Connects Mallow Town Park to Mallow Bridge Street and Main Street, Walking distance: Approx. 115m, 2 minutes
  - C5 - Connects Mallow Town Park to Mallow Castle Entrance through Bridge Street, Walking distance: Approx. 175m, 2.5 minutes
  - C6 - Connects Mallow Town Park to South Mallow (Bellevue and Ballydaheen Industrial Estate) through Mallow Bridge, Walking distance: Approx. 250m, 3 minutes

**GENERAL LAYOUT PLAN 1 - MALLOW TOWN PARK**  
Scale 1:1,500



**LEGEND:**

**Existing:**

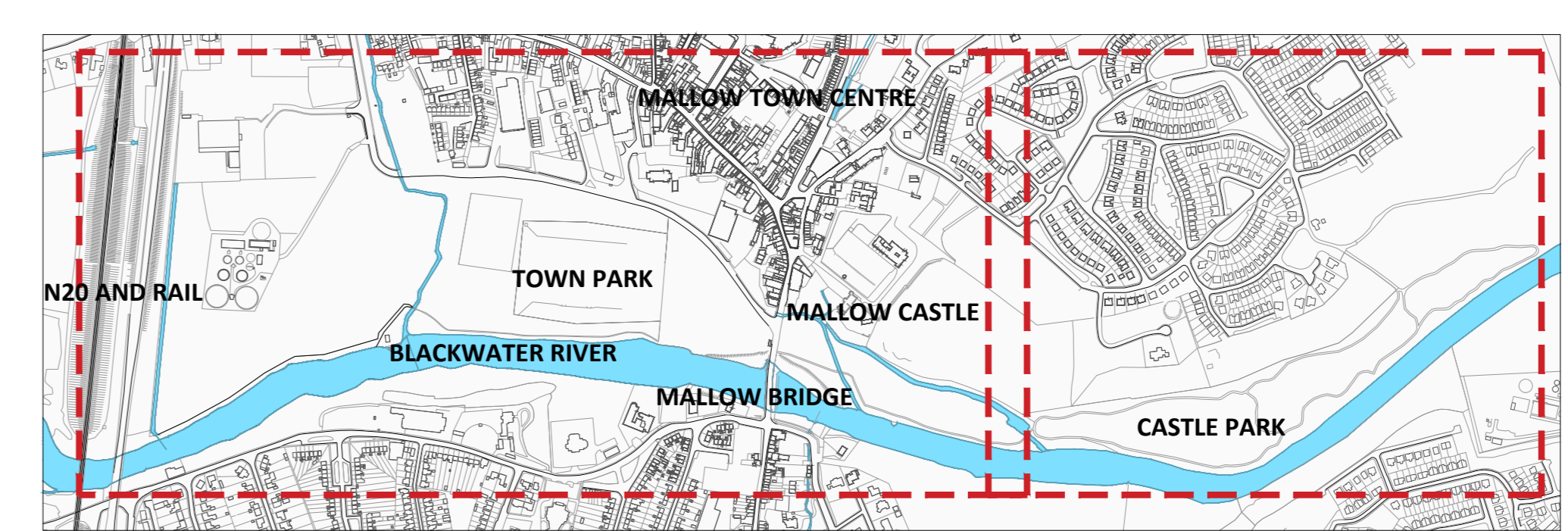
- Site Boundary
- Vegetation to be retained and protected
- Vegetation outside boundary
- Existing Neighbour Wood tree plantation retained and protected
- Existing native trees (oak, beech, lime) planted in 2019/2020, retained and protected
- Existing Hawthorn hedgerows planted in 2019/2020 along Riverwalk boundary with Dairygold and NE entrance from Castlepark, retained and protected
- Grass area

**Proposed:**

- Native & ornamental deciduous tree planting (oak, alder, cherry, magnolia)
- Native evergreen tree planting (pine)
- Wildflower meadow
- Reinforced grass to amenity path and overflow parking
- Bitumen macadam
- Concrete path
- Proposed detention basin

**Other Legend Items:**

- River/Stream
- Concrete path
- River Blackwater Special Area of Conservation (SAC)
- Overhead power line
- Mallow sewerage scheme upgrade, Planning ref. 195078-30/04/2019
- Proposed undergrounding of overhead power line
- Connections between proposed Town Park Entrances and Mallow Town
- Proposed Cross-Section, refer to dwg. 6615\_387
- Refer to detailed drawings for areas of proposed development
- Existing levels
- Location of Site Notice



**KEY PLAN**

**GENERAL LAYOUT PLAN 2 - MALLOW CASTLE PARK**  
Scale 1:1,500