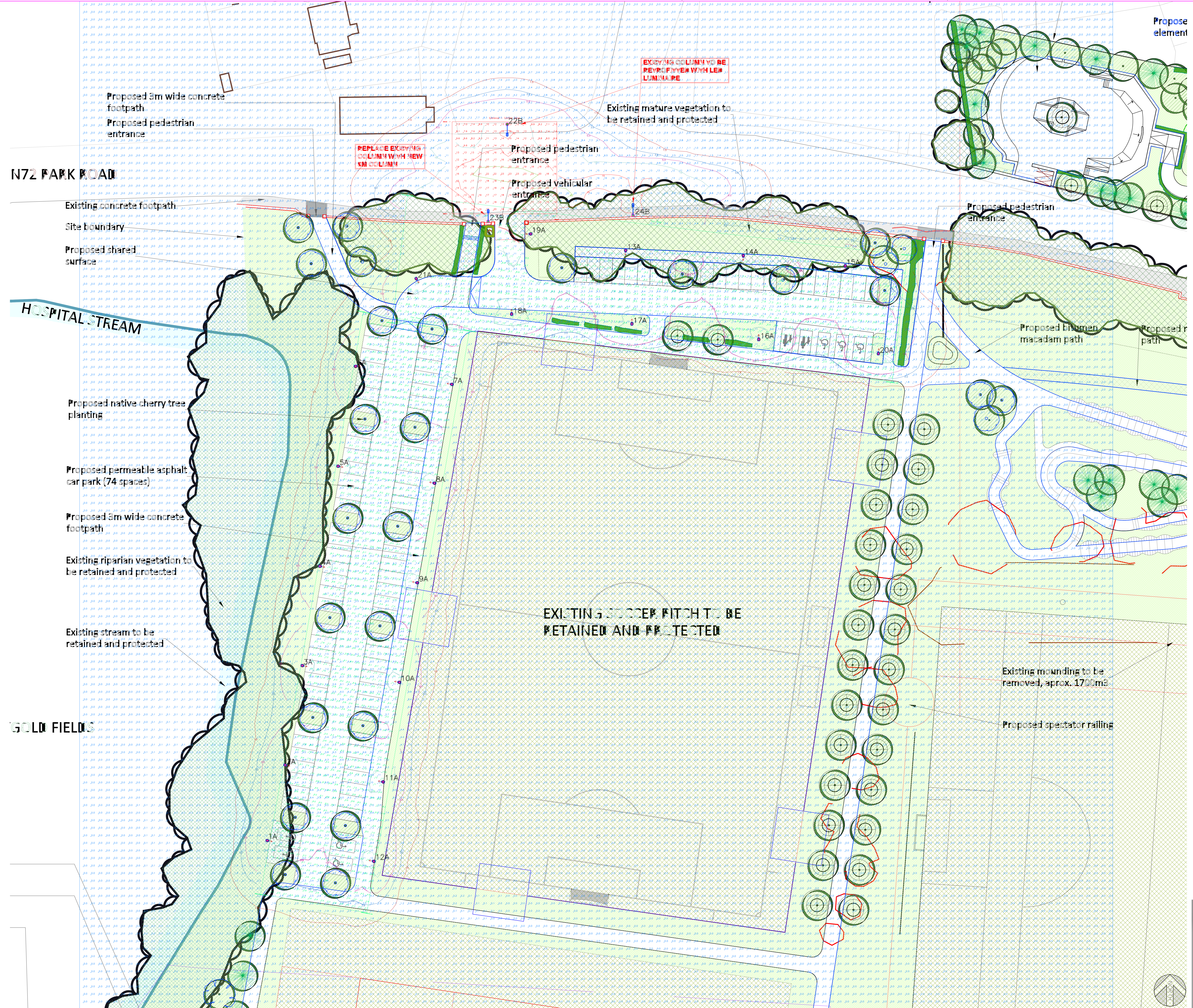


General Notes
A. DO NOT SCALE FROM THIS DRAWING. WORK ONLY FROM FIGURED DIMENSIONS.
B. ALL ERRORS & OMISSIONS TO BE REPORTED TO THE CONSULTING ENGINEER.
C. THIS DRAWING IS TO BE READ IN CONJUNCTION WITH ARCHITECTS AND STRUCTURAL ENGINEERS DRAWINGS.
D. REFER TO DOCUMENT REGISTER FOR DESCRIPTION OF STATUS CODES.



Town Park Results - Horizontal Illuminance (lux)
 Avg= 1.13
 Emin= 0.00
 Emax= 22.98
 Emin/Emax= 0.00
 Emax/Eavg= 20.35

Car Park 1 Results - Horizontal Illuminance (lux)
 Avg= 6.49
 Emin= 2.25
 Emax= 11.83
 Emin/Emax= 0.19
 Emax/Eavg= 1.82

Car Park 2 Results - Horizontal Illuminance (lux)
 Avg= 1.78
 Emin= 0.09
 Emax= 24.37
 Emin/Emax= 0.26
 Emax/Eavg= 2.77

Entrance - Conflict Zone Results - Horizontal Illuminance (lux)
 Avg= 15.18
 Emin= 6.98
 Emax= 23.04
 Emin/Emax= 0.30
 Emax/Eavg= 1.52

Luminaire Data
 Luminaire A XSP1E - B - Type 3SH - 21W 3K
 Lamp 3MD-SA1400 M 21W 3K MF 0.76
 Luminaire B XSP1E - L - Type 2LG - 55W 3K
 Lamp 5MDSA1400 3K 55W MF 0.84

Key
 ● Luminaire A Column
 ● Luminaire B Column
 ○ Beam Aiming Target
 □ Photometric Centre

Rev	Status	Date	Description	B.W.	D.E.
P01	S2	JULY 20	ISSUE FOR PLANNING		

Revision	Drawing Reference		
P01	17766-VCE-ZZ-ZZ-DR-E-1002		
Sheet	Project Number		
S2	17766		
Date	Checked By	Drawn By	Scale
JULY 2020	C.C.	B.W.	1:250@AO

Client
CORK COUNTY COUNCIL

Project Title
**MALLOW TOWN PARK
 UPGRADE WORKS**

Drawing Title
**PROPOSED CAR PARK
 MALLOW TOWN PARK
 PUBLIC LIGHTING LAYOUT
 CALCULATION**

