

June 2022

Rev. 1.1

## Part 8 Planning Report



Project Title:

**R600 Bowen's Cross Upgrade Scheme**

Planning & Development Act 2000 (as amended) - Part XI  
Planning & Development Regulations 2001 (as amended) - Part 8



Regional & Local Roads  
Design Office

## Document Info Sheet

Project Title	R600 Bowen's Cross Upgrade Scheme
Document Title	Part 8 Planning Report
Filename	2022_P8_00_00_02_Planning Report_Rev1.1.docx

## Document Revision History

Revision	Date	Originator	Checker	Approver	Description
Rev 1.0	14/06/2022	MD	DR	-	First Draft
Rev 1.1	20/06/2022	MD	DR	-	Final Document

### Prepared by:

Cork County Council

Regional & Local Roads Design Office

Floor 3, County Library Building

Carrigrohane Road, Cork, T12 K335

Tel: +353 21 428 5287

[Info.rlrdo@corkcoco.ie](mailto:Info.rlrdo@corkcoco.ie)

[www.corkcoco.ie](http://www.corkcoco.ie)

## TABLE OF CONTENTS<sup>1</sup>

<b>1. INTRODUCTION</b> .....	<b>4</b>
1.1 PURPOSE OF THIS REPORT .....	4
1.2 STUDY AREA.....	4
1.3 LAND REQUIREMENTS.....	4
<b>2. PART 8 PLANNING PROCESS</b> .....	<b>5</b>
2.1 SITE NOTICES.....	5
2.2 PLANNING CONSULTATIONS .....	5
2.3 PART 8 PLANNING DOCUMENTS.....	5
2.4 SUBMISSION PROCESS.....	5
<b>3. NATURE AND EXTENT OF PROPOSED DEVELOPMENT</b> .....	<b>6</b>
3.1 PROJECT CONTEXT AND EXISTING CONDITIONS.....	6
3.2 PROJECT OBJECTIVES.....	9
3.3 PROJECT SPECIFIC PROPOSALS .....	9
<b>4. PLANNING AND POLICY CONTEXT</b> .....	<b>10</b>
4.1 PLANNING CONTEXT .....	10
4.1.1 <i>Planning for the road realignment</i> .....	10
4.1.2 <i>Project Funding</i> .....	11
4.2 PLANNING POLICY COMPLIANCE.....	11
4.2.1 <i>Cork County Council Development Plan (CDP)</i> .....	11
<b>5. ENVIRONMENTAL ASSESSMENT OF THE SCHEME</b> .....	<b>11</b>
5.1 APPROPRIATE ASSESSMENT SCREENING REPORT.....	11
<b>6. CONCLUSION</b> .....	<b>12</b>
<b>7. APPENDICES</b> .....	<b>13</b>
7.1 APPENDIX A: SITE NOTICE.....	14
7.2 APPENDIX B: NOTIFICATION OF STATUTORY CONSULTEES.....	15
7.3 APPENDIX C: REPORT FOR THE SCREENING OF APPROPRIATE ASSESSMENT .....	16
7.4 APPENDIX D: ENVIRONMENTAL IMPACT ASSESSMENT SCREENING REPORT .....	17
7.5 APPENDIX E: PART 8 PLANNING DRAWINGS .....	18

---

<sup>1</sup> Contents in accordance with the requirements of the Planning and Development Act 2000 Part XI S.179(3)b

## 1. Introduction

Cork County Council proposes to complete road improvement works on the R600 at Bowen's Cross, Ballygarvan, Co Cork. The R600 is used by those travelling from Cork to Kinsale and further west whereas the local roads L2456 and L2457 are used by commuters travelling from south side of Cork City to Ballygarvan and beyond. R613 is used by the traffic on the southside of Cork City travelling between national road N71 and Carrigaline and further east to Ringaskiddy. Some of that traffic is generated by local commuters who choose that route to avoid congestions on the N28 and N40.

### 1.1 Purpose of this Report

The purpose of this report is to outline the proposals associated with the road project R600 Bowen's Cross Upgrade Scheme

### 1.2 Study Area

Bowen's Cross is situated approx. 3km south of Cork Airport along the strategic R600, which is the most direct access to the Wild Atlantic Way from Cork City. The junction is in an 80km/h speed limit zone. To the south east of Bowen's Cross is the village of Ballygarvan on the R613. 1.5km further east along the R613 is the CRH Ballygarvan quarry that is one of the primary quarries supplying the Cork City hinterland. (See Figure 1)

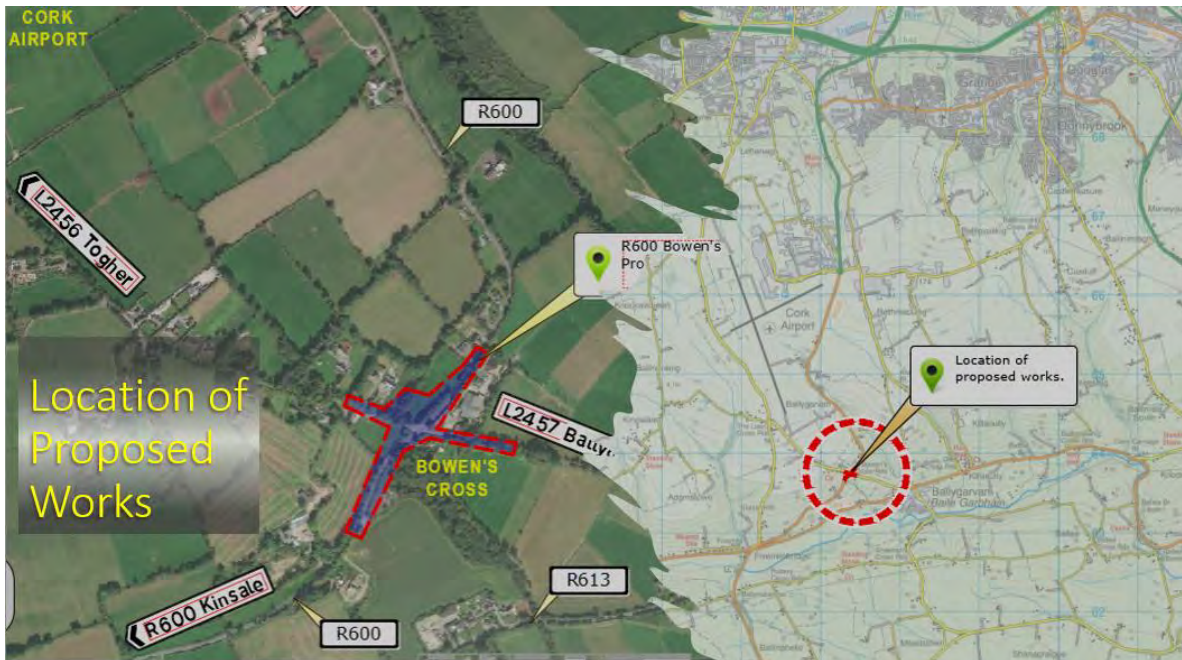


Figure 1 Study Area

### 1.3 Land requirements

The land acquisition is necessary from private landowners and are required to stagger minor arms at the crossroad and realign the main road to improve sight visibility.

## 2. Part 8 Planning Process

Section 179 of Part XI of the Planning and Development Act 2000, (as amended); and Part 8 of the Planning and Development Regulations 2001, (as amended) set out the requirements in respect of certain classes of development by or on behalf of local authorities. Part 8 of the Regulations comprises 7 Articles – 79 to 85. Article 80(1) lists the type of Developments to which Part 8 is required. The proposed road development is covered under the above article.

### 2.1 Site Notices

In accordance with the Article 81 the Local Authority shall:

- (a) give notice of proposed development in a newspaper;
- (b) erect site notices on the land on which the proposed development would be situated.

Cork County Council Published a notice of the proposals in the **Irish Examiner** on **Friday 24 June 2022**.

Three site notices were erected at various locations across the study area and will be maintained for the duration of the submission period. A copy of the Advertisement/Site Notice is attached (see 7.1 Appendix A).

### 2.2 Planning Consultations

Article 82(3) prescribes Statutory and Non-Statutory bodies to which a local authority should send notice of proposed development. These are summarised in the 7.2 Appendix B: Notification of Statutory Consultees.

### 2.3 Part 8 Planning Documents

The following is the list of Part 8 Planning documents contained in this application:

- Part 8 Planning Report (this document);
- Report for the Screening of Appropriate Assessment & Environmental Impact Assessment Screening Report (see 7.3 Appendix C & 7.4 Appendix D); and
- Preliminary Design Drawings (as listed below, and see 7.5 Appendix E);

Drawing Number	Drawing Title	Revision
R600-LM-01	Location Map	D0
R600-SA-01	Proposed Scheme Extents/Study Area	D0
R600-LA-01	Proposed Layout Plan – Sheet 1 of 3	D0
R600-LA-02	Proposed Layout Plan – Sheet 2 of 3	D0
R600-LA-03	Proposed Layout Plan – Sheet 3 of 3	D0
R600-VA-01	Longsections – Sheet 1 of 2	D0
R600-VA-02	Longsections – Sheet 2 of 2	D0

### 2.4 Submission Process

Cork County Council is required to make **full plans and particulars** of the proposed development available for inspection. These will be available from **Friday, 24<sup>th</sup> June 2022** until **Friday, 22<sup>nd</sup> July 2022** online **at the Planning section** on Cork County Council website ([www.corkcoco.ie](http://www.corkcoco.ie)) and also at the following locations:

- County Hall, Carrigrohane Road, Cork, T12 R2NC;
- Carrigaline Municipal District Office, Church Road, Carrigaline, Co Cork, P43 E281.

Alternatively, a hard copy of the documents will be posted on request by emailing [part8.rlrdo@corkcoco.ie](mailto:part8.rlrdo@corkcoco.ie) or by writing to: Senior Engineer, Cork County Council, Regional & Local Roads Design Office, Floor 3, County Library Building, Carrigrohane Road, Cork, T12 K335.

**Submissions or Observations** can be made:

1. Using an **online submission form** at [www.yourcouncil.ie](http://www.yourcouncil.ie); or
2. By sending an email to [part8.rlrdo@corkcoco.ie](mailto:part8.rlrdo@corkcoco.ie); or
3. By sending a letter to **Senior Engineer, Cork County Council, Regional & Local Roads Design Office, Floor 3, County Library Building, Carrigrohane Road, Cork, T12 K335.**

All emails and letters must reach the Senior Engineer **on or before 4pm on Friday, 12<sup>th</sup> August 2022.**

All submissions must include a contact name and address. Submissions made as part of the process are to be accessible at the request.

Any submissions or observations received by the Council are considered in the Part 8 Chief Executive's Report which is prepared and presented to the Councillors for adoption. The Chief Executive's Report lists those who made a submission together with the summary of their points made in the respective submission. The Report addresses each point and forms the local authority's response.

Arising from consideration of the representations, the Chief Executive's Report sets out whether or not it is proposed to proceed as originally planned or to proceed with a modified proposal. It is then a matter for the members of the Council (i.e. the Councillors) to grant or refuse planning.

### **3. Nature and Extent of Proposed Development**

Bowen's Cross is situated approx. 3km south of Cork Airport along the strategic R600, which is the most direct access to the Wild Atlantic Way from Cork City. The junction is in an 80km/h speed limit zone. To the south east of Bowen's Cross is the village of Ballygarvan on the R613. 1.5km further east along the R613 is the CRH Ballygarvan quarry that is one of the primary quarries supplying the Cork City hinterland.

#### **3.1 Project Context and Existing Conditions**

The R600 is used by those travelling from Cork to Kinsale and further west whereas the local roads L2456 and L2457 are used by commuters travelling from south side of Cork City to Ballygarvan and beyond. R613 is used by the traffic on the southside of Cork City travelling between national road N71 and Carrigaline and further east to Ringaskiddy. Some of that traffic is generated by local commuters who choose that route to avoid congestions on the N28 and N40.

A minor road, the L2457 connects Bowen's Cross to Ballygarvan. The gradient of the L2457 approaching Bowen's Cross is approx. 12%. The 12% gradient continues to the southern road edge of the R600 without any reduction to a more desirable 2%-3%. This gradient causes issues for vehicles, especially HGV's, trying to join the R600 from the south at Bowen's Cross. This steep gradient means it takes longer for vehicles to complete their manoeuvre from the Stop line. This increases the likelihood of accidents occurring.

The minor leg to the north of Bowen's Cross, the L2456 leads to Togher on the southside of Cork City. Togher is a large residential area of the City that has seen significant growth in housing over recent years.

The minor legs connect to the R600 to form a crossroads with no stagger. The limited sight distance combined with the steep gradients contribute to accidents at this junction.

At present, the junction of the L2456 & L2457 with the R600 at Bowen's Cross is sub-standard in several criteria.

Transport Infrastructure Ireland (TII) standards state that on rural national roads simple crossroads are not appropriate and should be avoided when upgrades to those crossroads are considered. In general, there are two main categories of junction types which are: at grade junctions and grade separated junctions. Grade separated junctions are typically associated with major roads, dual carriageways, and motorways. At grade junctions can be further subdivided into priority junctions and roundabouts. Junction at Bowen's Cross is classified as at grade priority junction. The advice from the standards mentioned above is that the right / left stagger is a preferred option, and this option is proposed for Part 8 planning. The roundabout options, indicated as an alternative to simple crossroads in the abovementioned standard – are not pursued further for reasons described in paragraph 0.

The sight distance west from the stop line at L2457 is only 27m. The Desirable Minimum Stopping Sight Distance for 80km/h is 160m with One Step Below being 120m and Two Steps Below being 90m. The sight distance to a vehicle stopped on the R600 at the crossroads waiting to turn south into L2457 is 100m. This figure is above the absolute minimum of Two Steps Below at 90m.

Minor legs suffer from inadequate carriageway width but more importantly the vertical gradient on those legs is exceeding the 7% maximum gradient for these types of roads. This effect is compounded on the L2457 by insufficient radii at corners and steep gradient extending immediately from the main R600 road edge.



Figure 2 View at the Bowen's Cross looking North



Figure 3 View looking North along R600 with Bowen's Cross at a distance



Figure 4 View looking East from Bowen's Cross into the L2457 Ballygarvan Road



Figure 5 View looking West from Bowen's Cross into L2456 Togher Road



Figure 6 View looking South along R600 with Bowen's Cross at a distance



Figure 7 View looking South at the R600 Bowen's Cross



Figure 8 View at R600 Bowen's Cross from the L2456 Togher Road, looking East



Figure 9 View at R600 Bowen's Cross from the L2457 Ballygarvan Road, looking West





Figure 10 Aerial View at R600 Bowen's Cross looking North



Figure 11 Aerial View at R600 Bowen's Cross looking South

### 3.2 Project Objectives

The purpose of this project is to upgrade Bowen's Cross to provide an improved junction and the realignment and widening of existing roads to acceptable standards of safety while achieving value for money.

The objectives are to improve the Desirable Minimum Stopping Sight Distance on the main R600 road, improvements to visibility on the oncoming traffic from both minor legs L2456 & L2457 by adjustments to existing steep gradients and introduction of the right-left stagger realignment of the crossroads.

- Upgrade Bowen's Cross in accordance with the objectives of the Road Safety Strategy 2021-2030 by reducing the risk of accidents occurring through engineering interventions;
- Upgrade Bowen's Cross in accordance with the national strategic outcomes and strategic investment priorities of Project Ireland 2040, in particular:
  - Enhanced regional accessibility;
  - Strengthening rural economies and communities;
  - Investing in the national roads networks.
- Upgrade Bowen's Cross in accordance with the proper planning and sustainable development of the area, as set out in the County Development Plan;
- Promote socioeconomic development in the R600 catchment, including Ballygarvan, Kinsale and the Wild Atlantic Way.

### 3.3 Project Specific Proposals

The proposed overall road improvement works will consist of the following:

- Removal of an embankment over the length of approx. 500m on the north west side of existing road;
- Clearing up necessary vegetation to provide the room for the widening of the road and to provide for the visibility;
- Re-alignment of the R600 road carriageway to the north west by approx. 8m;
- Introduction of an approx. 40m right-left stagger between the minor legs' centrelines;
- Introduction of a 2.5% plateau on the L2457 Ballygarvan road over a distance of approx. 12m;
- Introduction of the retaining structure in place of the cut back embankments;
- Reconstruction of the roadside drains/ditches;
- Extension to the existing culvert on the Kinsale side of the junction;
- All ancillary works required to deliver the proposed scheme.

The works will be carried out on the land owned by Cork County Council and Lands owned by 3<sup>rd</sup> parties. The land acquisition for this project is required from 5 No landowners.

## 4. Planning and Policy Context

### 4.1 Planning Context

The strategic priorities of Project Ireland 2040 include enhanced regional accessibility, strengthened rural economies and communities, and investing in the national roads network. The upgrade of Bowen's Cross enhances regional accessibility, strengthens rural economies and communities, and invests in the national roads network, in accordance with the objectives of Project Ireland 2040.

The Road Safety Strategy 2021-2030, under Vision Zero 2050, seeks to reduce the number of fatalities and injuries on roads through education, safe speeds and importance of safe and healthy modes of travel. The upgrade of Bowen's Cross will reduce the number of fatalities and injuries on the R600 through engineering intervention, in accordance with the objectives of the Road Safety Strategy 2021-2030.

The County Development Plan recognises the strategic role played by regional roads and seeks to enhance their carrying capacity and safety profile in line with demand. The County Development Plan also seeks to promote the improvement of strategic regional and local roads throughout the County in accordance with the strategies identified for the main settlements in the plan. The upgrade of Bowen's Cross improves a strategic regional road, in accordance with the objectives of the County Development Plan.

The R600 is a strategic regional road which links Cork City & Cork Airport to Kinsale, The Old Head of Kinsale (via the R604), Ballinspittle, Timoleague, and Clonakilty. Kinsale is the gateway town at the southern end of the Wild Atlantic Way. The Old Head of Kinsale is one of 15 signature discovery points on the Wild Atlantic Way, which also include Mizen Head and Dursey Island in County Cork. The R600 from Kinsale to Clonakilty is part of the Wild Atlantic Way. The upgrade of Bowen's Cross is in accordance with tourism objectives for Kinsale and the Wild Atlantic Way.

#### 4.1.1 Planning for the road realignment

A preliminary investigation was carried out between 2017 and 2021 by the Roads Design Office resulting with multiple scheme options report for road widening, road realignment and junction staggering – none of which were moved to the design stage due to lack of funding and necessity to acquire considerable amount of privately owned land.

Even though the roundabouts are not preferred on rural roads a few roundabout options were considered. Factors such as contours of the existing ground, proximity of buildings on the east side of the main road as well as steep gradient of both local roads do not allow to place the central island at or near the current intersection. Placing central island west or south-west, outside of the footprint of the existing carriageway, makes the gradient on the L2456 road much worse and would require extending the works area considerably resulting in additional land acquisitions and alterations to property boundaries. Roundabouts work most efficiently when vehicular traffic flows are reasonably balanced between the arms. Traffic surveys and analysis at the crossroads, have shown the imbalance in the traffic levels at each approach with an approximate ratio of 8:1 (main road traffic to side road

traffic). Also, proposed location of the central island would make one of the arms gaining priority over others resulting in the dominant flow creating delays on other approaches.

#### 4.1.2 Project Funding

The funding for that project has been secured by Cork County Council from:

- Cork County Council – Internal Funding; and
- Department of Transport Tourism and Sport (DTTAS).

## 4.2 Planning Policy Compliance

Bowen's Cross is situated approx. 3km south of Cork Airport along the strategic R600, which is the most direct access to the Wild Atlantic Way from Cork City. The junction is in an 80km/h speed limit zone. To the south east of Bowen's Cross is the village of Ballygarvan on the R613. 1.5km further east along the R613 is the CRH Ballygarvan quarry that is one of the primary quarries supplying the Cork City hinterland.

### 4.2.1 Cork County Council Development Plan (CDP)

Recently adopted Cork County Council's Cork County Development Plan (2022 – 2028) which came into effect in June 2022 promotes active travel, sustainable transport infrastructure that strengthens the connections between rural and urban areas, supports demand management measures to reduce car travel and promote best practice mobility management and travel planning via sustainable transport modes and promotes road safety measures including traffic calming, road signage and parking. It sets out to *"Promote the improvement of strategic Regional and Local Roads throughout the County in accordance with the strategies identified for the main settlements in CDP."*

Under previous Cork County Council's Cork County Development Plan (2014 – 2020) R600 Regional Road between Cork City and Kinsale via Bowen's Cross has been identified as a critical route to the Delivery of Planned Development.

Section 10.3.11 of the County Development Plan Objective TM 3-2 for Regional & Local Roads sets out that *"It is of critical importance to road safety that any new vehicular access is designed with adequate provision for visibility, so that drivers emerging from the access will have adequate visibility of oncoming vehicles, cyclists and pedestrians"*.

## 5. Environmental Assessment of the Scheme

### 5.1 Appropriate Assessment Screening Report

The Screening exercise was completed by Regional & Local Roads Design Office in compliance with the relevant European Commission and national guidelines. The potential impacts during the construction and operation of the proposed road works at Bowen's Cross have been considered in the context of the European Sites potentially affected, their qualifying interests, Special Conservation Interests and Conservation Objectives.

Report for the Screening of Appropriate Assessment & Environmental Impact Assessment Screening Report can be found in 7.3 Appendix C and in 7.4 Appendix D of this report.

In accordance with Section 177U of the Planning and Development Act 2000 (as amended) and on the basis of the objective information provided in AA Screening Report, it is concluded beyond reasonable scientific doubt that the proposed road improvement works, individually or in combination with other plans/projects are not likely to have a significant effect on a European site (Natura 2000 site). It is

therefore considered that a Stage 2 Appropriate Assessment under Section 177V of the Planning and Development Act 2000 (as amended), is not required.

As per Article 81 of the Planning and Development Regulations 2001 (as amended) an Environmental Impact Assessment (EIA) screening determination has been made and a determination has been made that an EIA Report is not required. In accordance with Article 120 (3), as amended by S.I. No. 296 of 2018, a person may, within 4 weeks from the date of this notice (on or before **Friday, 22<sup>nd</sup> July 2022**), apply to An Bord Pleanála for a screening determination as to whether the development would be likely to have significant effects on the environment. Such a submission should be addressed to the Secretary, An Bord Pleanála, 64, Marlborough Street, Dublin, 1.

## 6. Conclusion

The proposals which are the subject of this Part 8 Planning Process provide a unique opportunity to deliver a low-cost project aiming at the improvement to the safety and comfort of the road users. Studies carried out and published by Transport Infrastructure Ireland (TII) regarding possible enhancements to road layouts at existing priority junction to improve safety have shown, that the replacement of a rural roads crossroads by a staggered junction has potential to reduce collisions by 60%.

It is proposed to upgrade Bowen's Cross to provide an improved junction and the realignment and widening of existing roads to acceptable standards of safety while achieving value for money.

The proposed project will:


- **Improve gradient of minor roads on approach**  
Both minor roads are excessively steep on approach to the crossroads. It is proposed to reduce the gradient of both minor roads on approach to the crossroads to improve traffic movements at the crossroads.
- **Improve sightline visibility on all approaches to the crossroads**  
Existing sight visibility at Bowen's Cross is seriously restricted and has led to a number of serious accidents at the junction. The proposed new scheme will remove the existing four way cross roads and introduce a right/left stagger junction. The right/left stagger junction will provide the sight visibility of oncoming vehicles thus in turn providing safer turning movements for road users.
- **Increase the carriageway cross section**  
The proposed R600 cross section at the crossroads will comprise of two 3.65m lanes of vehicular traffic and a 3.65m right hand turn lane and verge on both sides.

The proposed works are consistent with proper planning and sustainable development of the area.

## 7. Appendices

7.1 APPENDIX A: SITE NOTICE.....	14
7.2 APPENDIX B: NOTIFICATION OF STATUTORY CONSULTEES.....	15
7.3 APPENDIX C: REPORT FOR THE SCREENING OF APPROPRIATE ASSESSMENT .....	16
7.4 APPENDIX D: ENVIRONMENTAL IMPACT ASSESSMENT SCREENING REPORT .....	17
7.5 APPENDIX E: PART 8 PLANNING DRAWINGS .....	18

7.1 Appendix A: Site Notice



**Cork  
County  
Council**

## SITE NOTICE

**PLANNING & DEVELOPMENT ACT 2000 (as amended) - Part XI**  
**PLANNING & DEVELOPMENT REGULATIONS 2001 (as amended) - Part 8**

Notice is hereby given, pursuant to the provisions of Part XI, Section 179 of the Planning & Development Act, 2000 (as amended) and in accordance with the requirements of Part 8, Article 81 and Article 83 of the Planning & Development Regulations, 2001 (as amended) that Cork County Council proposes to carry out the following development:

**Project Title: R600 Bowen's Cross Upgrade Scheme**

LOCATION	NATURE & EXTENT OF DEVELOPMENT	LOCATIONS and OFFICES AT WHICH PLANS AND PARTICULARS MAY BE INSPECTED
<p><u>Location:</u> R600 Bowen's Cross Upgrade Scheme Ballygarvan, Co. Cork</p> <p><u>Project Area - Townlands:</u> Ballygarvan</p>	<p><i>An overview of the proposed development includes the following elements:</i></p> <p><i>The proposed improvements include realignment of the northern side of the existing road, introduction of the right-left stagger of local roads by approx. 40m, introduction of a 2% plateau on the L2457 Ballygarvan Road over a distance of approx. 18m, clearing up vegetation, reconstruction of the roadside open drains/ditches, extension to the existing culvert on the Kinsale side of the junction.</i></p> <p><i>Works will be carried out on the R600 Cork-Kinsale road, L2456 Togher road, L2457 Ballygarvan road within existing roads, lands owned by Cork County Council and lands acquired from private landowners.</i></p>	<ol style="list-style-type: none"> <li>1. The proposed scheme plans and particulars are available to view on the Cork County Council website by going to the planning section at <a href="http://www.corkcoco.ie">www.corkcoco.ie</a>.</li> </ol> <p>Documents are also available on public display at:</p> <ol style="list-style-type: none"> <li>2. County Hall foyer, Carrigrohane Road, Cork, T12 R2NC.</li> <li>3. Carrigaline Municipal District Office, Church Road, Carrigaline, Co Cork, P43 E281.</li> </ol> <p style="color: red; font-size: small;">Alternatively, a hard copy of the documents will be posted on request by emailing <a href="mailto:part8.rldo@corkcoco.ie">part8.rldo@corkcoco.ie</a> or by writing to: Senior Engineer, Cork County Council, Regional &amp; Local Roads Design Office, Floor 3, County Library Building, Carrigrohane Road, Cork, T12 K335</p>

Plans and Particulars of the proposed development may be inspected online or at the locations detailed above, subject to COVID-19 travel restrictions (if applicable), from **Friday, 24<sup>th</sup> June 2022** until **Friday, 22<sup>nd</sup> July 2022**.

**Submissions or Observations** with respect to the proposed development, dealing with proper planning and sustainable development of the area in which the development will be situated, may be made using the **online submission form** on [www.yourcouncil.ie](http://www.yourcouncil.ie) or, in writing to **Senior Engineer, Cork County Council, Regional & Local Roads Design Office, Floor 3, County Library Building, Carrigrohane Road, Cork, T12 K335** or emailed to [part8.rldo@corkcoco.ie](mailto:part8.rldo@corkcoco.ie) and must reach the Senior Engineer **on or before 4pm on Friday, 12<sup>th</sup> August 2022**.

As per Article 81 of the Planning and Development Regulations 2001 (as amended) an Environmental Impact Assessment (EIA) screening determination has been made and a determination has been made that an **EIA Report is not required**. In accordance with Article 120 (3), as amended by S.I. No. 296 of 2018, a person may, **within 4 weeks** from the date of this notice (on or before **Friday, 22<sup>nd</sup> July 2022**), apply to An Bord Pleanála for a screening determination as to whether the development would be likely to have significant effects on the environment. Such a submission should be addressed to the Secretary, An Bord Pleanála, 64, Marlborough Street, Dublin, 1.

All submissions or observations should be clearly marked:  
 Project Title: **"R600 Bowen's Cross Upgrade Scheme"**.

---

John Slattery, Senior Engineer

---

Friday 24 June 2022

## 7.2 Appendix B: Notification of Statutory Consultees

Prescribed Bodies	Non-Prescribed Bodies	Consultees at the Design Stage
Arts Council	National Roads Design Office (NRDO)	Bord Gáis
Fáilte Ireland	Garda Síochána	BT Ireland
An Taisce	Bus Éireann	Chorus NTL
The Heritage Council	Geological Survey Ireland (GSI)	Eir
Cork City Council	Office of Public Works (OPW)	ESB
South Western Regional Fisheries Board	National Irish Safety Organisation	Aurora Telecom
Waterways Ireland	Department of Defence	Smart Telecom
Transport Infrastructure Ireland (TII)		E-net
National Transport Authority (NTA)		EuNetworks
Environmental Protection Agency (EPA)		Sky
Health Services Executive - Southern Area		Virgin
Irish Water		
Irish Aviation Authority		
Dublin Airport Authority Infrastructure		

### 7.3 Appendix C: Report for the Screening of Appropriate Assessment

May 2022  
Rev 1.0

## Report for the Screening of Appropriate Assessment

**Project Title:**

R600 Bowen's Cross Upgrade  
Scheme

Cover page here for  
information only  
(Full document  
attached)



Comhairle Contae Chorcaí  
Cork County Council

**Completed by:**  
**Regional & Local Roads Design Office**  
CORK COUNTY COUNCIL



7.4 Appendix D: Environmental Impact Assessment Screening Report

May 2022  
Rev 1.0

# Environmental Impact Assessment Screening Report

**Project Title:**

R600 Bowen's Cross Upgrade  
Scheme

Cover page here for  
information only  
(Full document  
attached)

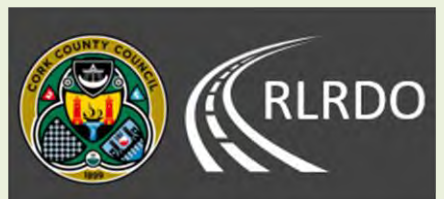


Comhairle Contae Chorcaí  
Cork County Council

**Completed by:**  
**Regional & Local Roads Design Office**  
CORK COUNTY COUNCIL

## 7.5 Appendix E: Part 8 Planning Drawings

<b>Drawing Number</b>	<b>Drawing Title</b>	<b>Revision</b>
R600-LM-01	Location Map	D0
R600-SA-01	Proposed Scheme Extents/Study Area	D0
R600-LA-01	Proposed Layout Plan – Sheet 1 of 3	D0
R600-LA-02	Proposed Layout Plan – Sheet 2 of 3	D0
R600-LA-03	Proposed Layout Plan – Sheet 3 of 3	D0
R600-VA-01	Longsections – Sheet 1 of 2	D0
R600-VA-02	Longsections – Sheet 2 of 2	D0



Regional & Local Roads  
Design Office