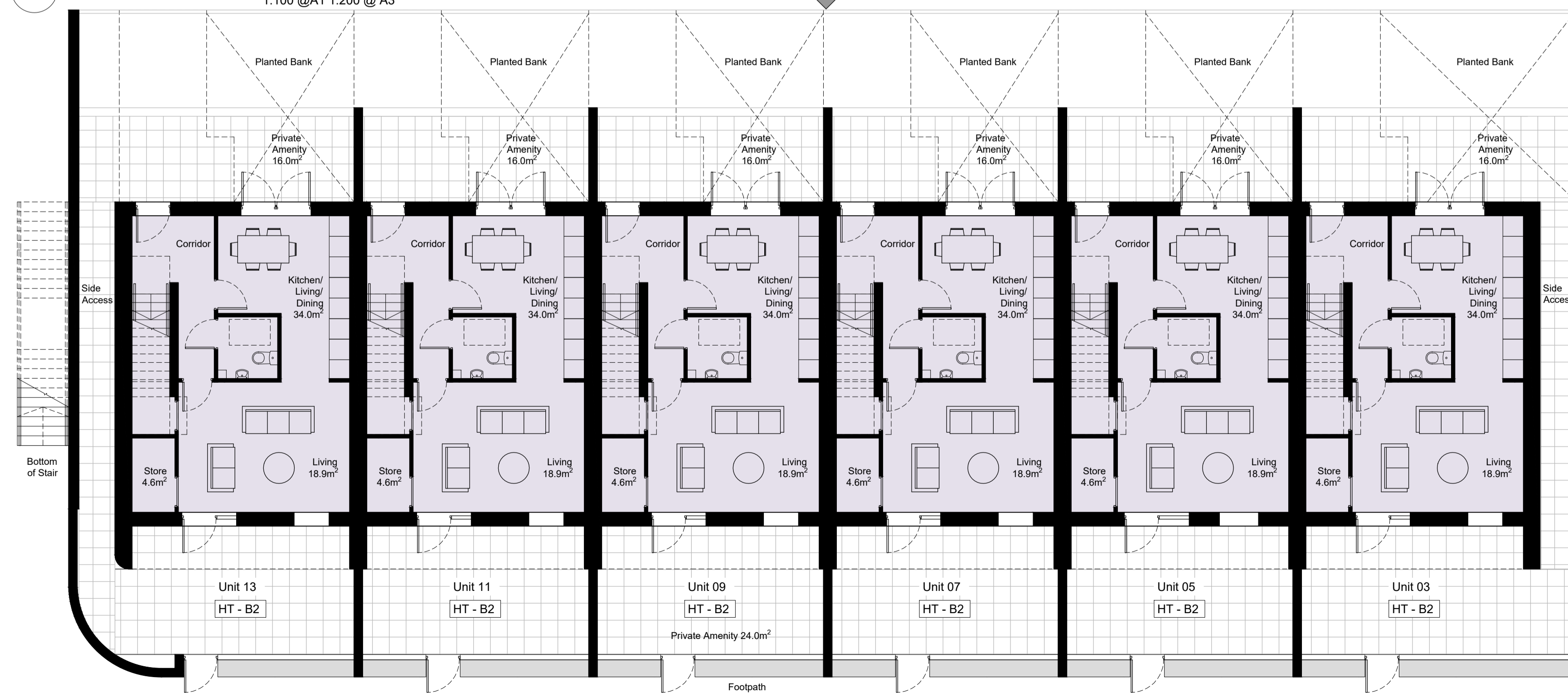




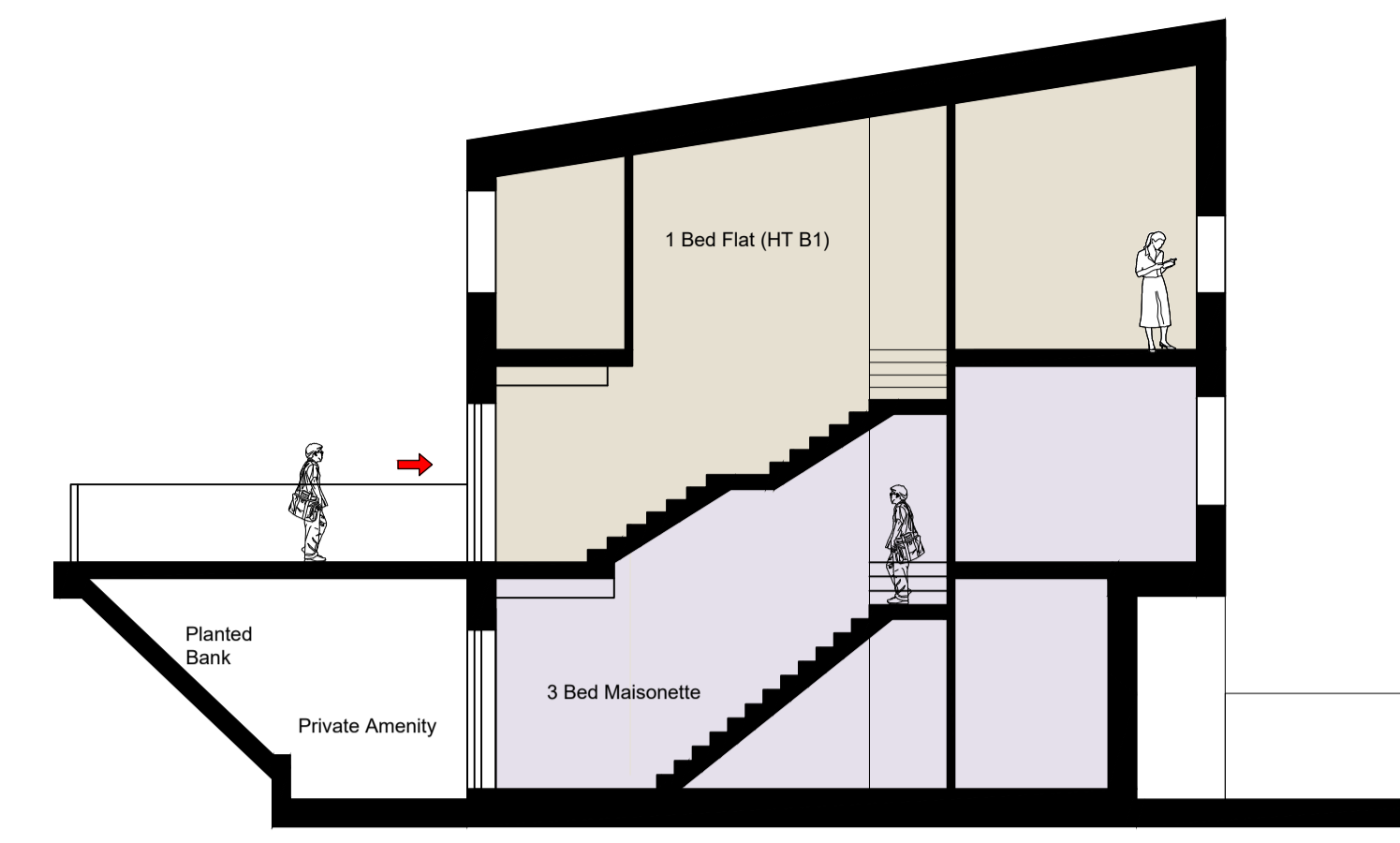
01 First Floor  
 1:100 @A1 1:200 @A3  
 Unit 14 HT - B1, Unit 12 HT - B1, Unit 10 HT - B1, Unit 08 HT - B1, Unit 06 HT - B1, Unit 04 HT - B1



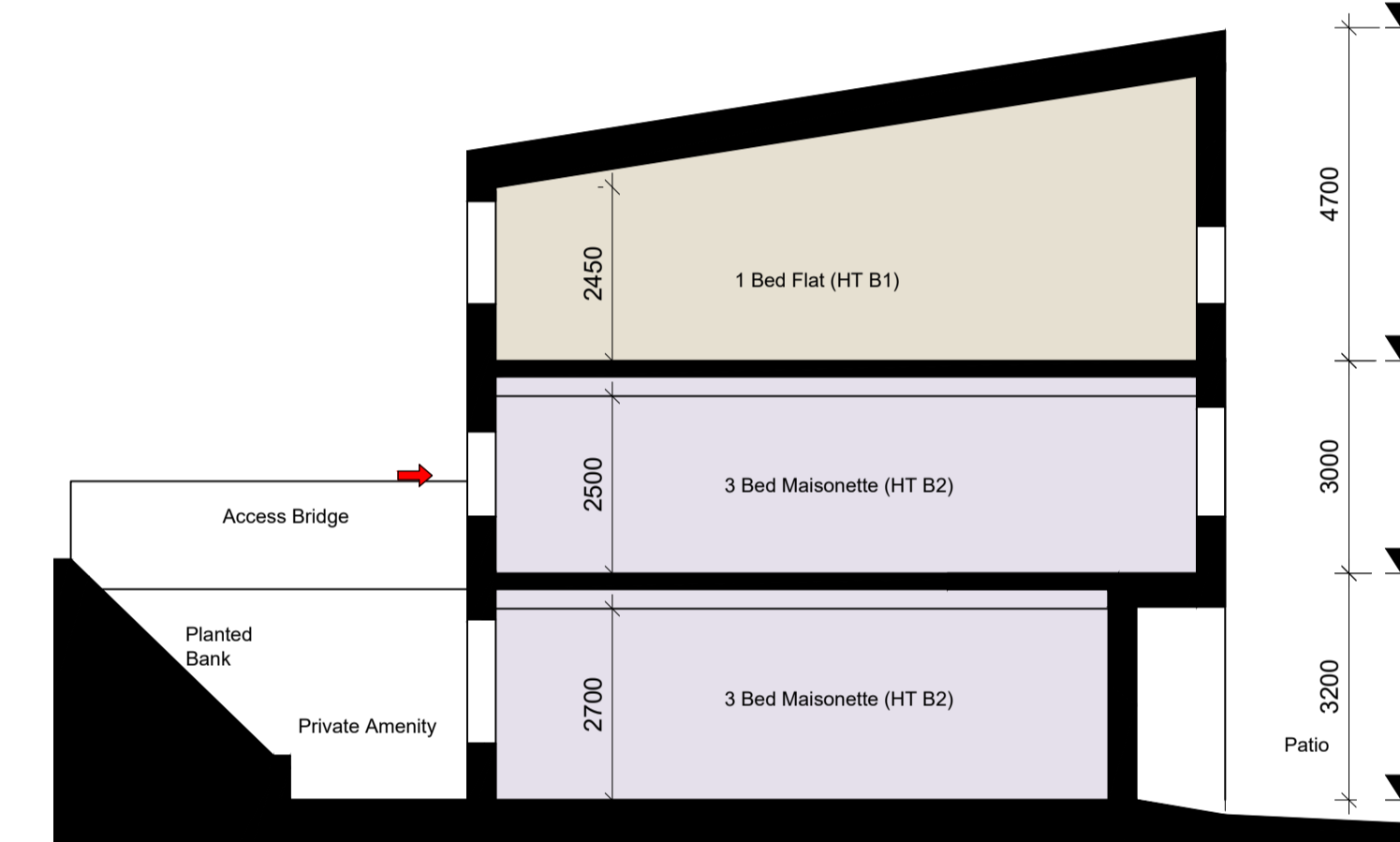
00 Ground Floor  
 1:100 @A1 1:200 @A3  
 Unit 13 HT - B2, Unit 11 HT - B2, Unit 09 HT - B2, Unit 07 HT - B2, Unit 05 HT - B2, Unit 03 HT - B2



01 Lower Ground Floor  
 1:100 @A1 1:200 @A3  
 Unit 13 HT - B2, Unit 11 HT - B2, Unit 09 HT - B2, Unit 07 HT - B2, Unit 05 HT - B2, Unit 03 HT - B2



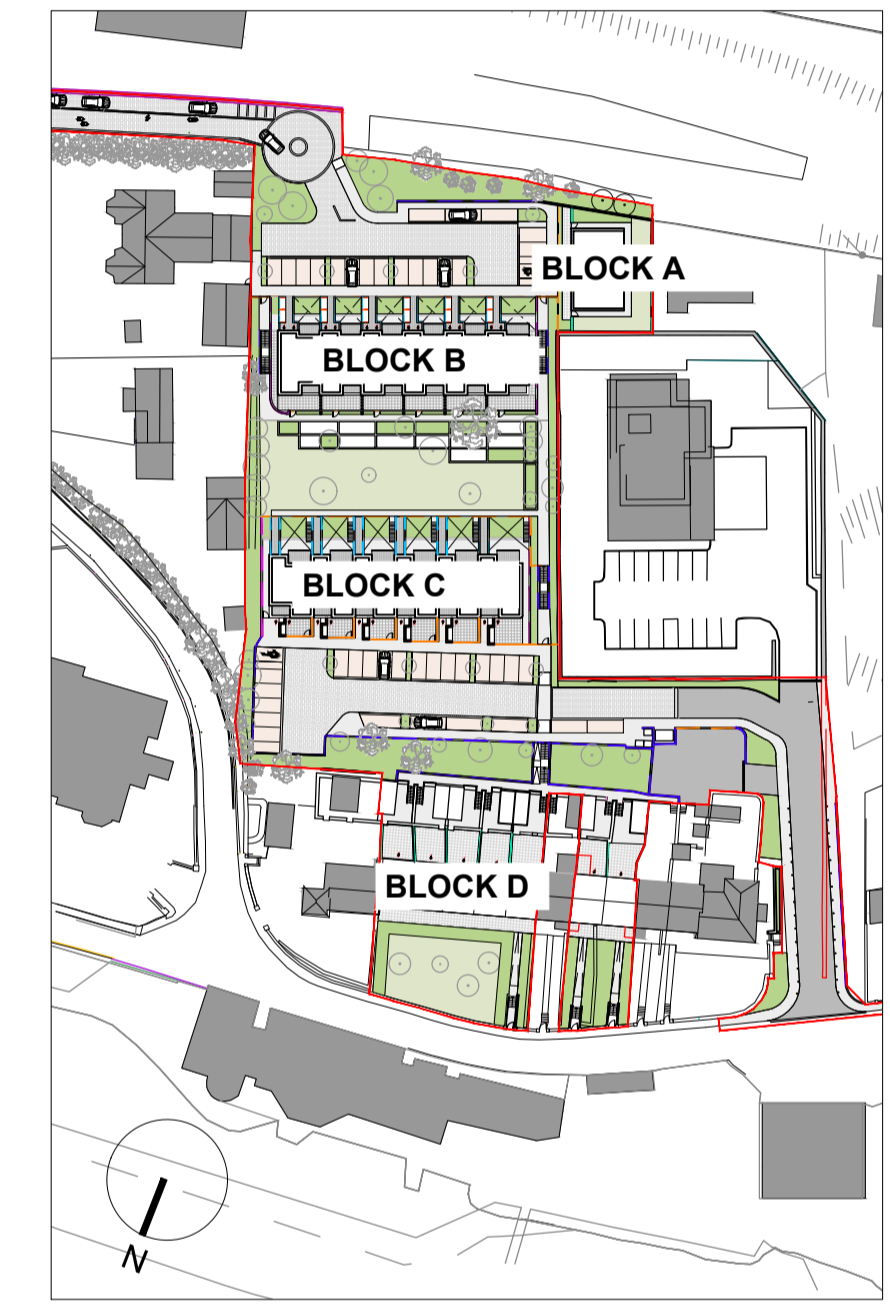
AA Section AA  
 1:100 @A1 1:200 @A3



BB Section BB  
 1:100 @A1 1:200 @A3

Note :  
 Dimensions not to be scaled from drawing.  
 For any discrepancies found consult with design office.  
 Copyright © - Cork County Council Architect's Dept.  
 This drawing to be read in conjunction with all the Specification Documents.

UNIT AREAS (QHSC)	GROSS FLOOR AREA (m <sup>2</sup> )	MAIN LIVING ROOM (m <sup>2</sup> )	TOTAL LIVING AREA (m <sup>2</sup> )	TOTAL BEDROOM AREA (m <sup>2</sup> )	STORAGE (m <sup>2</sup> )	UNIT NUMBERS
1BED/2P (QHSC)	45	11	23	11	3	(14 1Beds)
HT - A1 (Block A)	49.6	13	26	11.4	2.0	2
HT - B1 (Block B)	47.7	13	24.1	11	5.2	6
HT - C1 (Block C)	49.3	13	23.6	11.0	3.9	6
2BED/3P (QHSC)	63	13	28	20	5	(7 2Beds)
HT - D1 (Cottages)	54.6	15.5	22.1	18.2	1.3 + 7.9Ext	7
3BED/5P (QHSC)	92	13	34	32	5	(12 3Beds)
HT - B2 (Block B)	106	18.9	34	33.2	7.6	6
HT - C2 (Block C)	101	15.5	35.7	32.2	6.4	6
<b>Total Units:</b>						<b>33</b>



KEY PLAN (NTS)

Issued for Part 8	28-10-2022
Rev	Revision / Issue Description
Project Stage:	<b>Part 8</b>
Job Title:	<b>Crosshaven, Lower Road Co Cork</b>
<b>Architects Department</b> Housing Directorate County Hall, Cork Tel: (021) 4285430 e-mail: architects@corkcoco.ie Senior Architect: Ruth Henry	
Drawing Title: <b>Block B General Arrangement Plans &amp; Sections</b>	
Design Team:	Date: Oct 2022
Architect: R.Fenton	Dwg. No. 2110
Technician: A.Svensson	Scale: 1:100 @A1
Surveyor: R.Brosnan	Sheet: A1
Job No. S_2020_02	