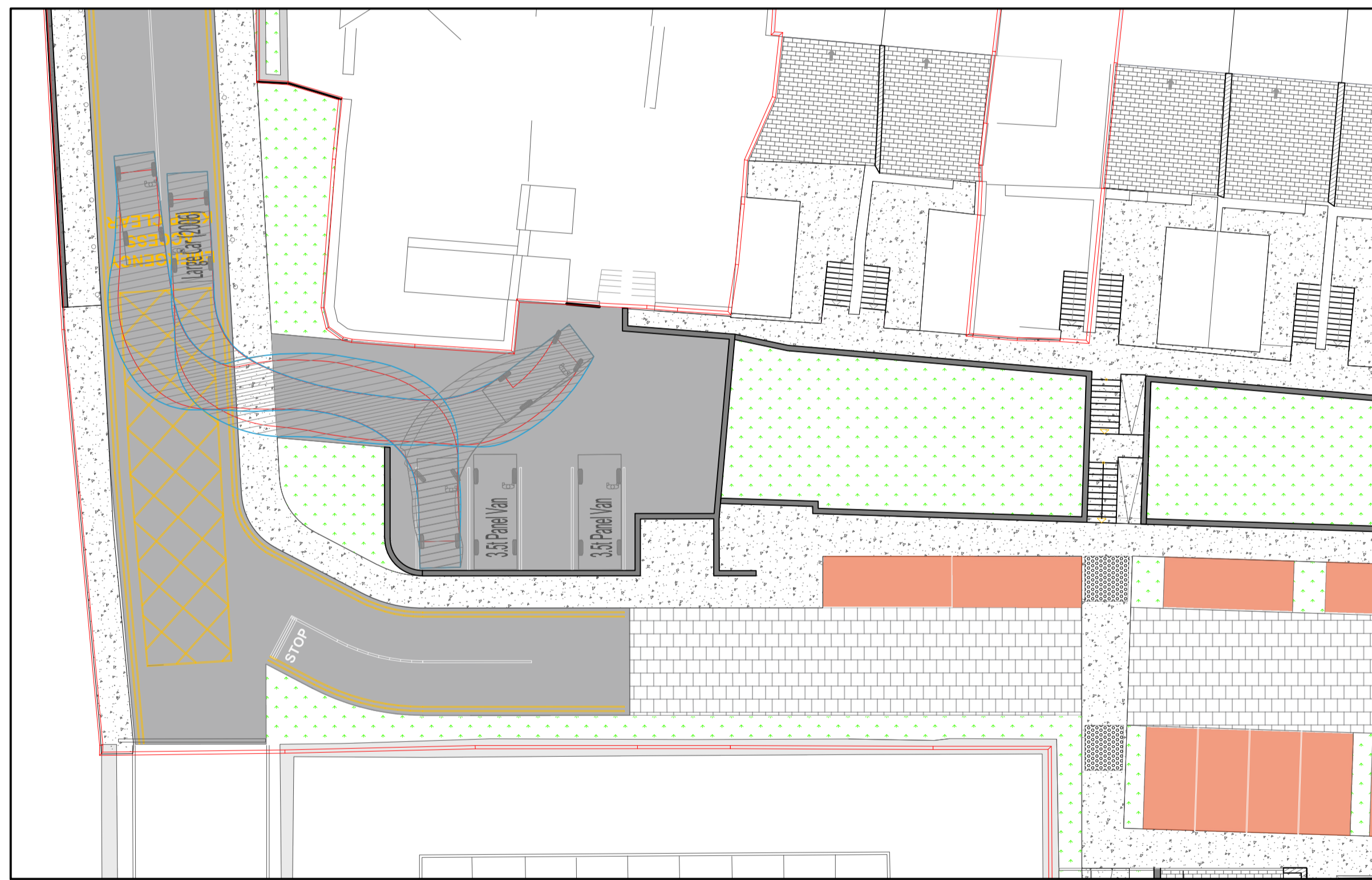




GARDA VAN SWEEP PATH ANALYSIS
SCALE 1:200

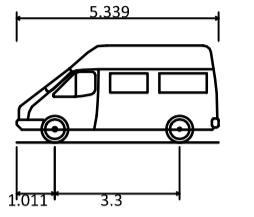
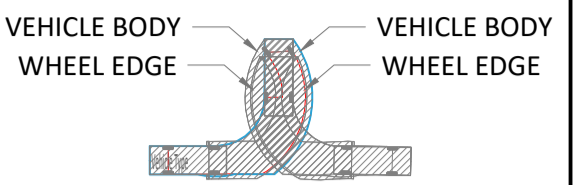


GARDA CAR PARK SWEEP PATH ANALYSIS
SCALE 1:200

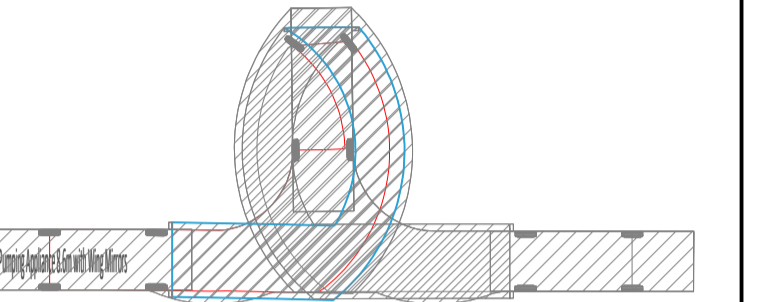
LEGEND:

FORWARD MOVEMENT

REVERSING MOVEMENT



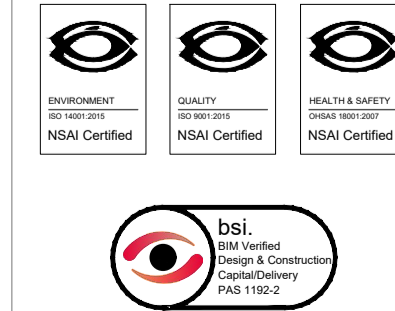
3.5T PANEL VAN
OVERALL LENGTH 5.339m
OVERALL WIDTH 1.986m
OVERALL BODY HEIGHT 2.565m
MIN BODY GROUND CLEARANCE 0.338m
TRACK WIDTH 1.986m
LOCK-TO-LOCK TIME 4.00s
CURB TO CURB TURNING RADIUS 6.400m



- FOR SETTING OUT REFER TO ARCHITECT'S DRAWINGS.
- THIS DRAWING TO BE READ IN CONJUNCTION WITH ALL OTHER ARCHITECTURAL AND ENGINEERING DRAWINGS AND ALL OTHER RELEVANT DRAWINGS AND SPECIFICATIONS.
- DO NOT SCALE THIS DRAWING. USE FIGURED DIMENSIONS ONLY.
- NO PART OF THIS DOCUMENT MAY BE REPRODUCED OR TRANSMITTED IN ANY FORM OR STORED IN ANY RETRIEVAL SYSTEM OF ANY NATURE WITHOUT THE WRITTEN PERMISSION OF O'CONNOR SUTTON CRONIN AS COPYRIGHT HOLDER EXCEPT AS AGREED FOR USE ON THE PROJECT FOR WHICH THE DOCUMENT WAS ORIGINALLY ISSUED.

Rev No.	Date	Revision Note	Drn by	Chkd by
C01	20/10/22	ISSUED FOR PLANNING	CW	CM

Rev No.	Date	Revision Note	Drn by	Chkd by



North Point House,
North Point Business Park,
New Mallow Road,
Cork.
TEL +353 (0)21 2355816
e: contactus@ocsc.ie
w: www.ocsc.ie
Dublin | London | Belfast | Galway | Cork | Birmingham



Client: CORK COUNTY COUNCIL
Project: CROSSHAVEN DEVELOPMENT
Title: SWEEP PATH ANALYSIS
GARDA CAR PARK
Code | Originator | Zone | Level | Type | Role | Number | Status | Revision
C1003 | OCSC | XX | XX | DR | C | 0064 | A1 | C01
Date: 11/21 Scale: A/S @ A1 Drn by: CW Chkd by: CM Aprvd by: JMCB