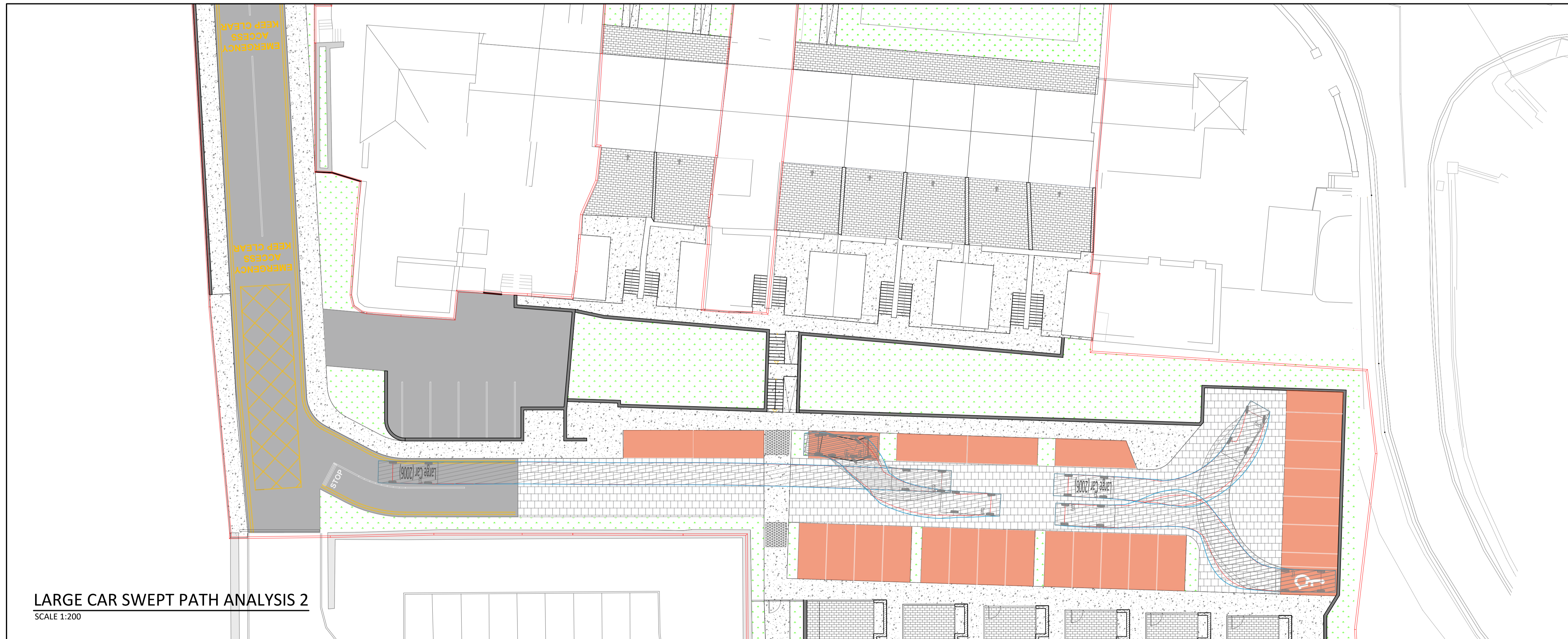


LARGE CAR SWEEP PATH ANALYSIS 1


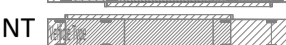
SCALE 1:200

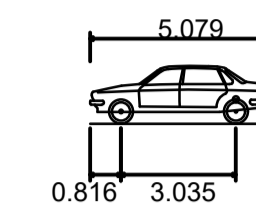
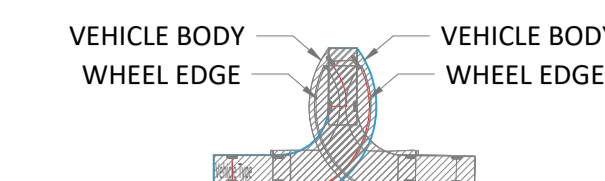


LARGE CAR SWEEP PATH ANALYSIS 2

SCALE 1:200

LEGEND:

FORWARD MOVEMENT 
 REVERSING MOVEMENT 



LARGE CAR
 OVERALL LENGTH 5.079m
 OVERALL WIDTH 1.872m
 OVERALL BODY HEIGHT 1.525m
 MIN BODY GROUND CLEARANCE 0.310m
 MAX TRACK WIDTH 1.831m
 LOCK-TO-LOCK TIME 4.00s
 CURB TO CURB TURNING RADIUS 5.900m

- FOR SETTING OUT REFER TO ARCHITECT'S DRAWINGS.
- THIS DRAWING TO BE READ IN CONJUNCTION WITH ALL OTHER ARCHITECTURAL AND ENGINEERING DRAWINGS AND ALL OTHER RELEVANT DRAWINGS AND SPECIFICATIONS.
- DO NOT SCALE THIS DRAWING. USE FIGURED DIMENSIONS ONLY.
- NO PART OF THIS DOCUMENT MAY BE REPRODUCED OR TRANSMITTED IN ANY FORM OR STORED IN ANY RETRIEVAL SYSTEM OF ANY NATURE WITHOUT THE WRITTEN PERMISSION OF O'CONNOR SUTTON CRONIN AS COPYRIGHT HOLDER EXCEPT AS AGREED FOR USE ON THE PROJECT FOR WHICH THE DOCUMENT WAS ORIGINALLY ISSUED.

| Rev No. | Date | Revision Note | Drn by | Chkd by |
|---------|----------|---------------------|--------|---------|
| C01 | 20/10/22 | ISSUED FOR PLANNING | CW | CM |

| Rev No. | Date | Revision Note | Drn by | Chkd by |
|---------|------|---------------|--------|---------|
| | | | | |



North Point House,
 North Point Business Park,
 New Malrow Road,
 Cork.
 TEL +353 (0)21 2355816
 e: contactus@ocsc.ie
 w: www.ocsc.ie
 Dublin | London | Belfast | Galway | Cork | Birmingham



Client: CORK COUNTY COUNCIL
 Project: CROSSHAVEN DEVELOPMENT
 Title: SWEEP PATH ANALYSIS
 LARGE CAR
 SHEET 1 OF 2
 Code Originator Zone Level Type Role Number Status Revision
 C1003 OCSC XX XX DR C 0060 A1 C01
 Date: 11/21 Scale: 1/250 @ A1 Drn by: CW Chkd by: CM Aprvd by: JMCB