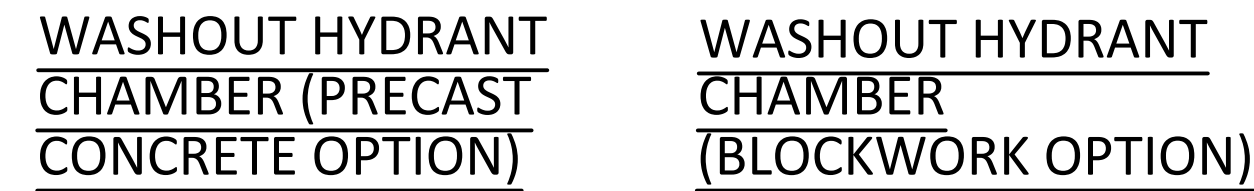
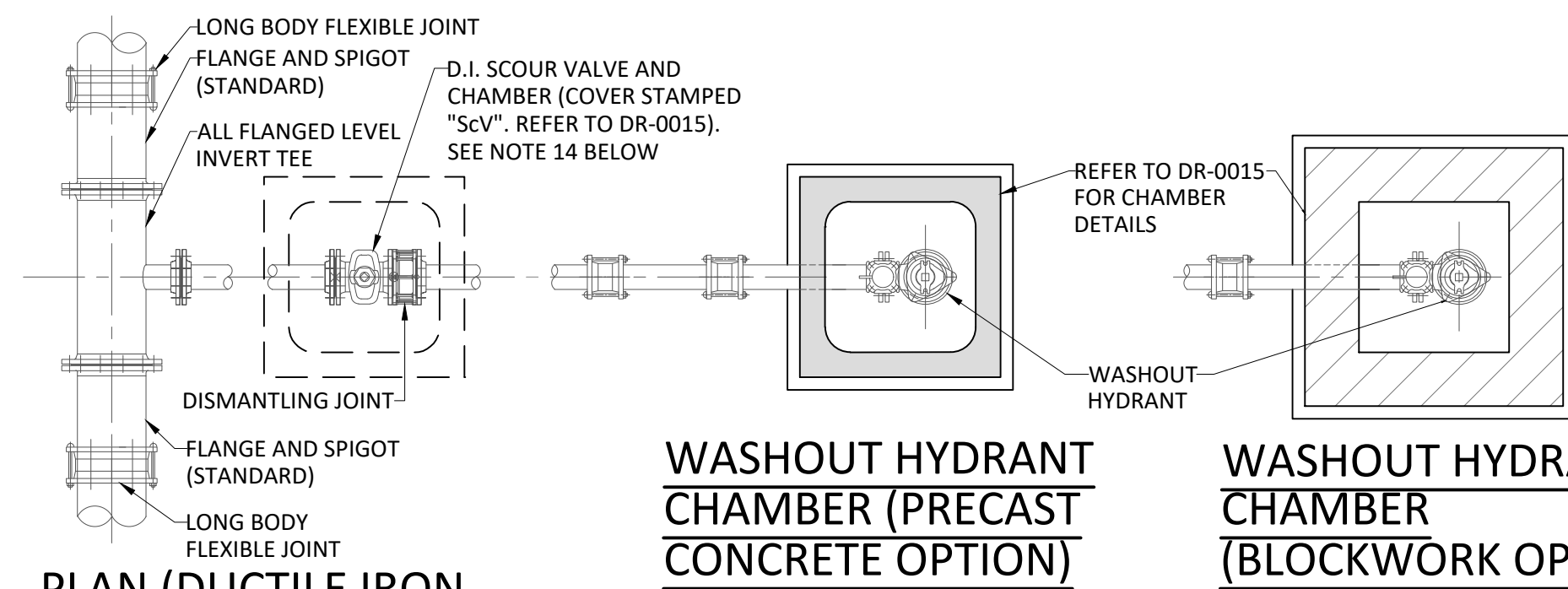
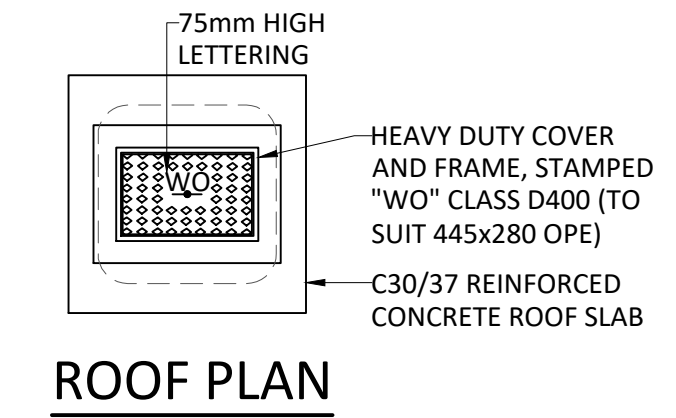
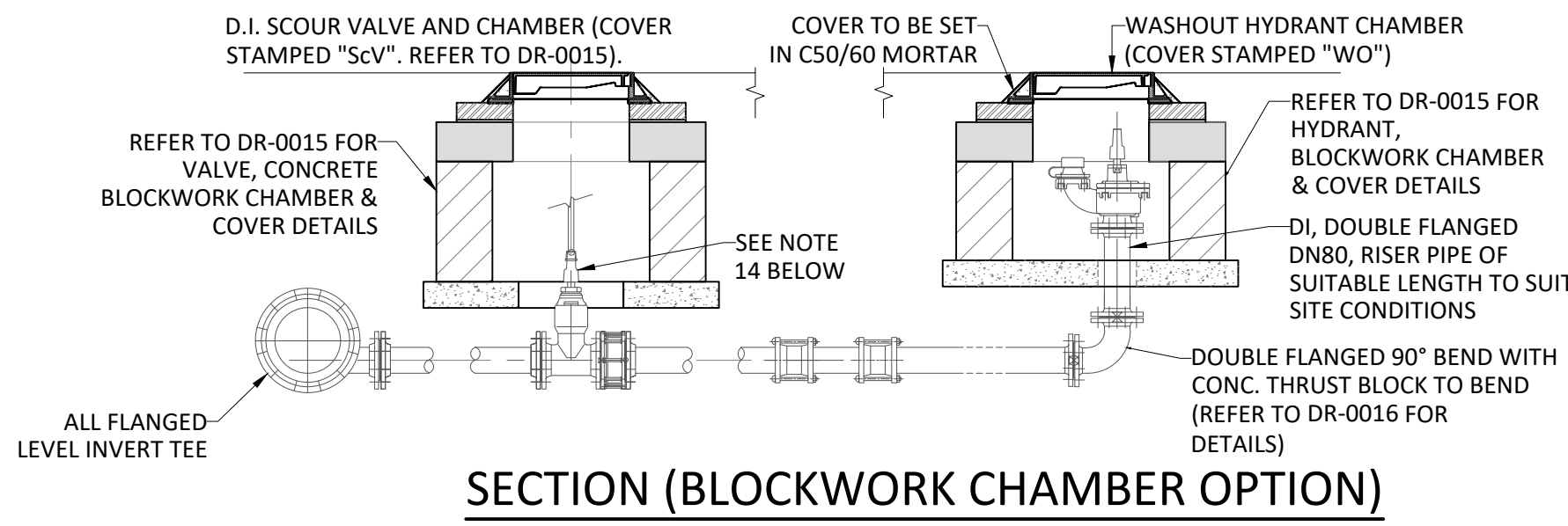
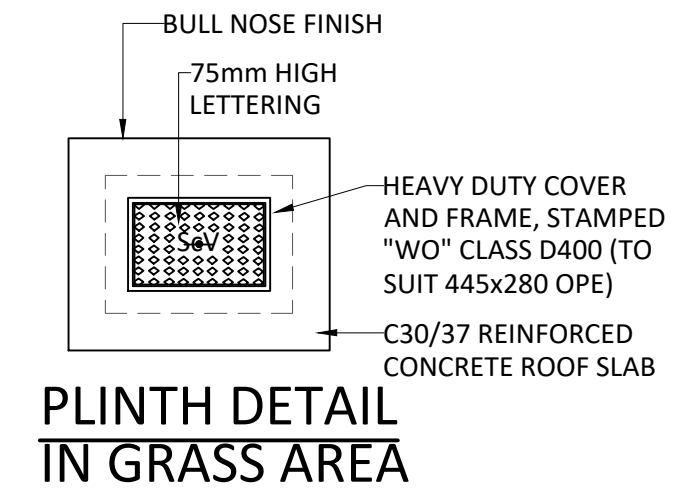
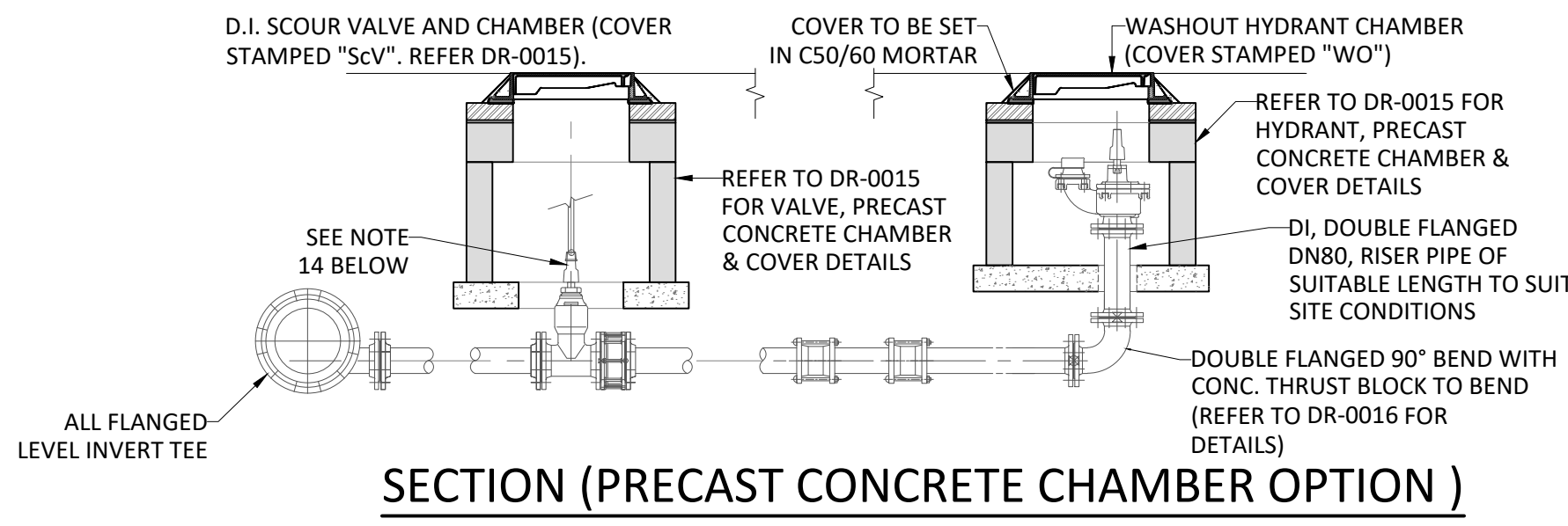
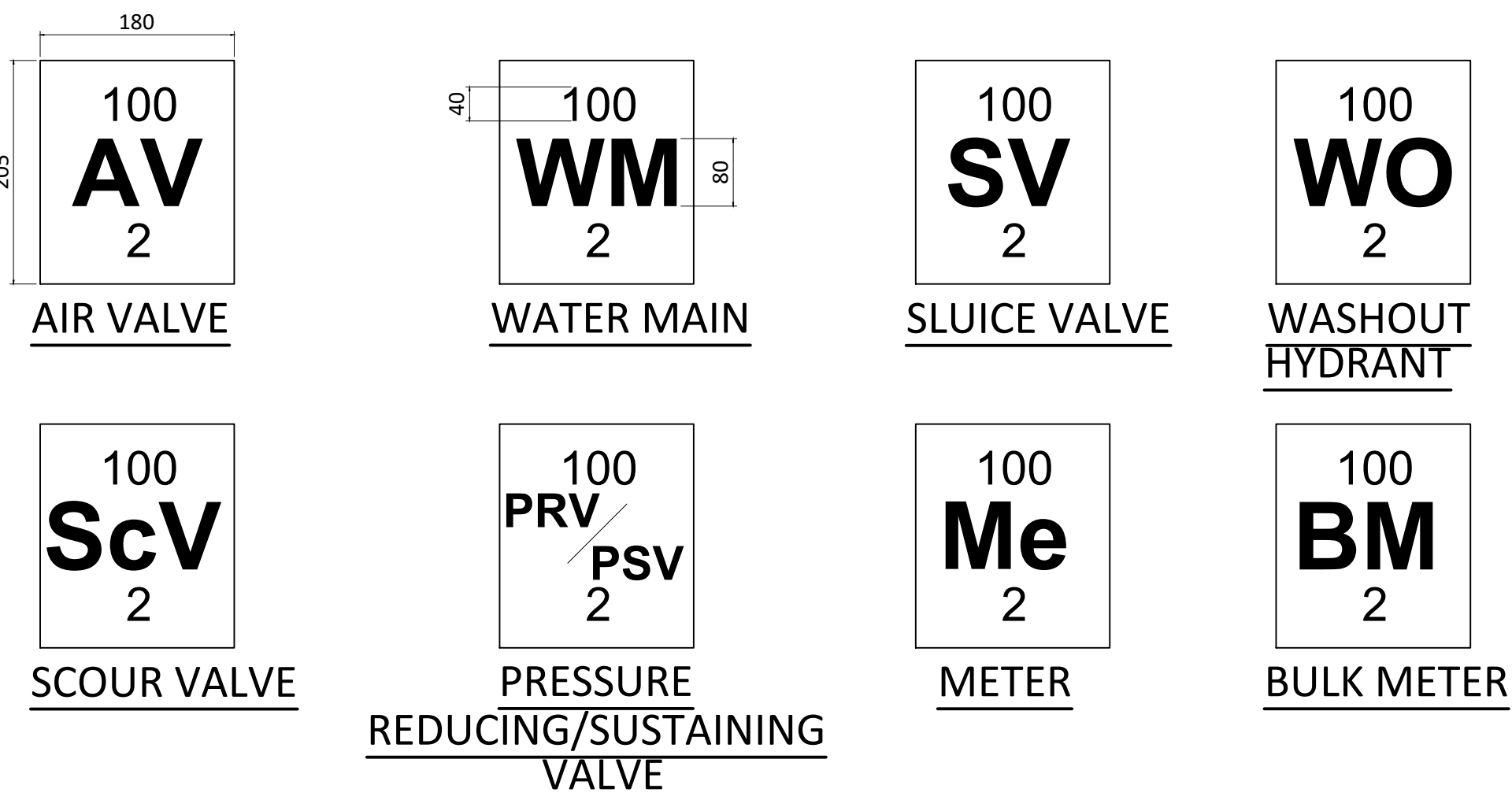
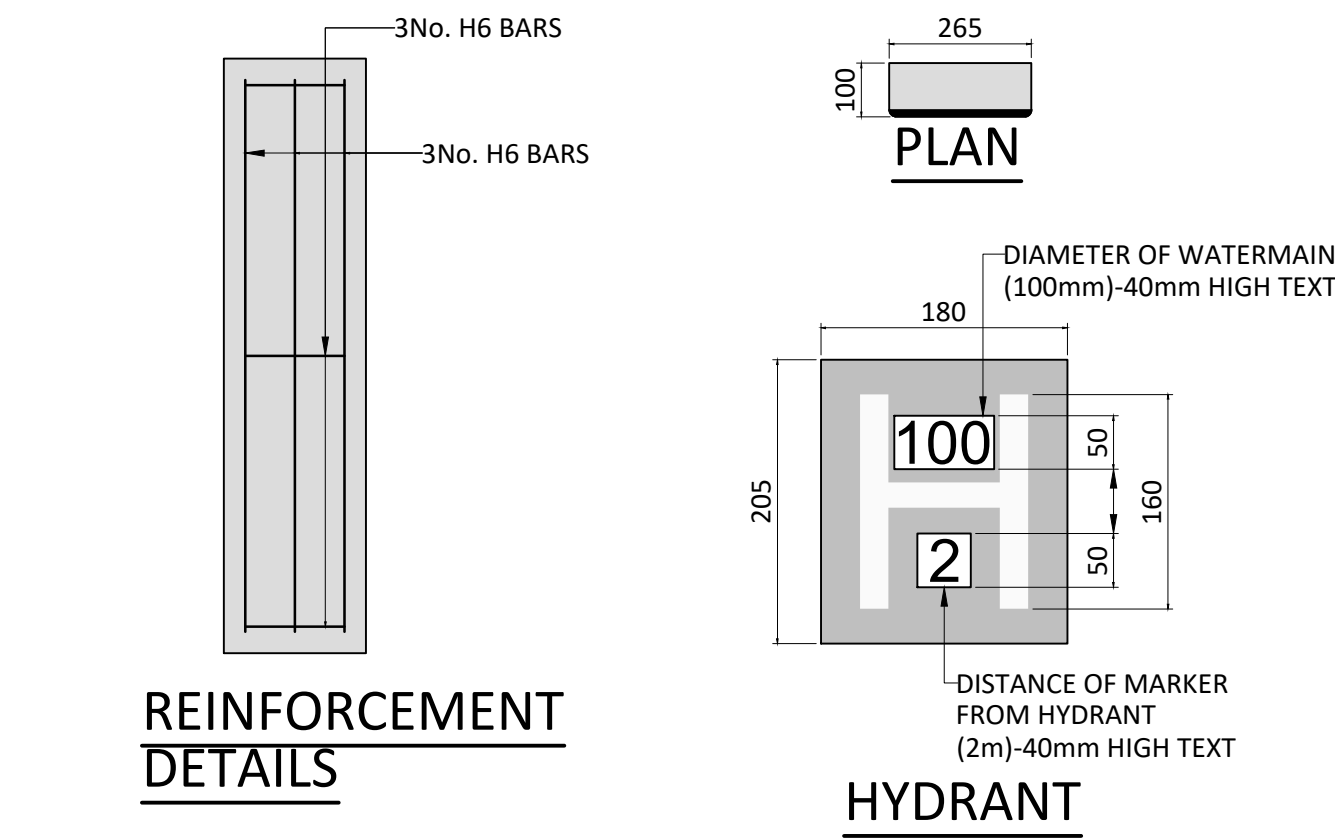


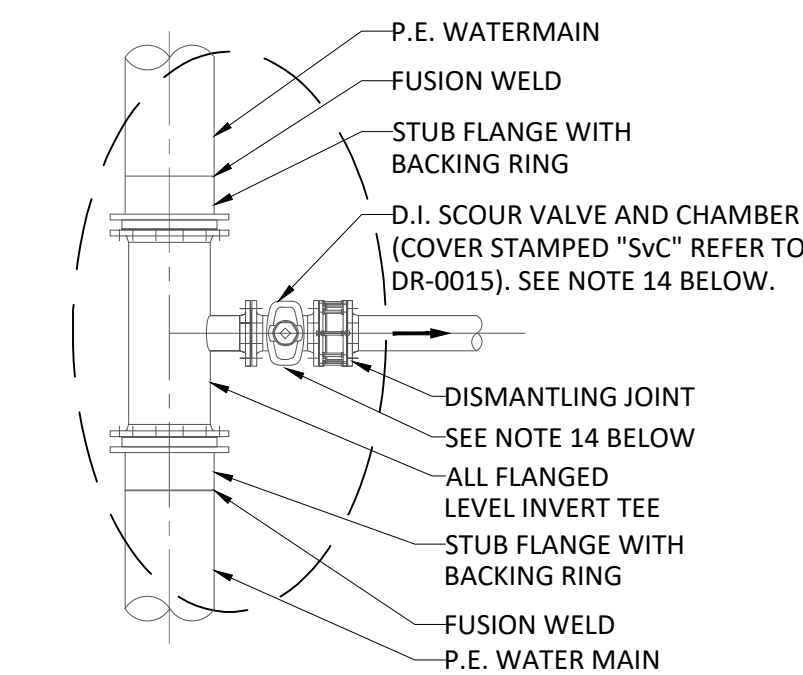
MARKER POST/PLATES NOTES

1. WHERE PRACTICAL MARKER PLATES SHALL BE FIXED TO ADJACENT WALLS OR ALTERNATIVELY ATTACHED TO MARKER POSTS.
2. PLATES TO BE FIXED IN POSITION USING WALL PLUGS AND STAINLESS STEEL SCREWS.
3. MARKER PLATES TO BE MANUFACTURED IN ACCORDANCE WITH BS 3251.
4. FOR HYDRANT PLATE ALL CHARACTERS SHOULD BE BLACK AND THE REMAINDER OF THE FRONT FACE SHOULD CONFORM TO COLOUR REFERENCE No. 309 (CANARY YELLOW) OF BS 381C.
5. PIPE DIAMETER ON HYDRANT PLATE TO REFER TO WATERMAIN NOT BRANCH.
6. SLUICE VALVE, AIR VALVE, SCOUR VALVE, WASHOUT HYDRANT AND METER PLATES SHOULD BE CAST IRON. ALL CHARACTERS SHOULD BE BLACK ON WHITE PAINT BACKGROUND. ALTERNATIVE MATERIAL MAY BE USED SUBJECT TO ACCEPTANCE BY IRISH WATER.
7. CONCRETE SURROUND TO MARKER POST TO BE GRADE C25 / 30 AND IN ACCORDANCE WITH IS EN 206/2013.
8. PLASTIC MARKER POSTS ARE NOT ACCEPTABLE.
9. ALL CONCRETE TO BE IN ACCORDANCE WITH IS EN 206.



WASHOUT HYDRANT CHAMBER NOTES

1. ALL DIMENSIONS ARE IN MILLIMETRES (mm) UNLESS NOTED OTHERWISE.
2. STRUCTURAL REINFORCEMENT AND DESIGN DETAIL TO BE PROVIDED BY THE DEVELOPER AND SUBMITTED TO IRISH WATER FOR REVIEW.
3. HYDRANT CHAMBERS SHALL BE COVERED WITH APPROVED HEAVY DUTY METAL COVERS TO IS 261 AND BS 5834 COVER AND FRAME SHALL BE SUITABLE FOR ROAD AND TRAFFIC CONDITIONS AND IS SUBJECT TO REVIEW BY IRISH WATER.
4. HYDRANTS SHALL BE DOUBLE FLANGED DRILLED TO PN 16. THEY SHALL COMPLY WITH BS 750: 2012. THE HYDRANT SHALL INCORPORATE A SCREW DOWN GATE VALVE, UNDERGROUND "GUIDE TO HEAD" TYPE WITH SCREW DOWN CONNECTION OUTLET AND FALSE SPINDLE CAP AND IRON CHAIN.
5. ALL HYDRANTS SHALL BE CLOCKWISE CLOSING.
6. HYDRANT CHAMBER & SCOUR VALVE CHAMBER TO BE CONSTRUCTED OF PRECAST CONCRETE UNITS OR HIGH DENSITY BLOCKWORK. ALTERNATIVELY PROPRIETARY PREFABRICATED CHAMBER UNITS MAY ALSO BE USED, SUBJECT TO REVIEW FROM IRISH WATER. ROOF SLABS SHALL BE DESIGNED TO CARRY ALL LIVE LOADS & DEAD LOADS, & CONSIST OF A REINFORCED CONCRETE SLAB OF IN-SITU CONCRETE, GRADE C30/37, WITH A MINIMUM THICKNESS OF 150mm. ALTERNATIVELY, PRE-CAST CONCRETE ROOFS MAY BE USED, SUBJECT TO IRISH WATER REVIEW, & COMPLIANCE WITH BS 5911, Part 4.
7. CONCRETE CHAMBERS SHALL BE SURROUNDED BY A MINIMUM OF 150mm COMPACTED CLAUSE 808 MATERIAL.
8. 200mm ALL ROUND, 100mm DEEP CONCRETE PLINTH AROUND COVERS IN GRASS AREAS.
9. THRUST BLOCKS (NOT SHOWN ON DRAWING), TO BE PROVIDED AS PER STANDARD DRAWING 0016 AT ALL TEES, BENDS, TAPERS, DEAD ENDS AND PIPES AT STEEP SLOPES.
10. ANTI CORROSION TAPE TO BE PROVIDED AROUND BURIED FLANGES.
11. ALL PIPEWORK AND FITTINGS FOR WASHOUT HYDRANT CHAMBER CONNECTION SHALL BE DUCTILE IRON. PIPES AND FITTINGS ON MAIN LINE SHALL BE PE PIPES & FITTINGS IN ACCORDANCE WITH IS EN 12201:2011, OR DUCTILE IRON PIPES AND FITTINGS IN ACCORDANCE WITH IS EN 545.
12. ALL CHAMBERS TO BE CHECKED FOR UPLIFT BY THE DEVELOPER BASED ON GROUND CONDITIONS WITHIN THE SITE. SHOULD ANTI FLOATATION MEASURES BE REQUIRED THEY SHALL BE SUBJECT TO AGREEMENT WITH IRISH WATER.
13. ALL CONCRETE TO BE IN ACCORDANCE WITH IS EN 206.
14. WHERE HYDRANTS ARE INSTALLED ON TRUNK MAINS OR PRINCIPAL MAINS, A SEPARATE SCOUR VALVE IS REQUIRED. THE PURPOSE OF THE SCOUR VALVE IS TO ISOLATE THE WASHOUT HYDRANT FOR MAINTENANCE PURPOSES & ALSO TO REDUCE THE VELOCITY OF THE DISCHARGE FLOW WHERE HIGH HEAD VALUES ARE CONCERNED. A "SANDWICH"

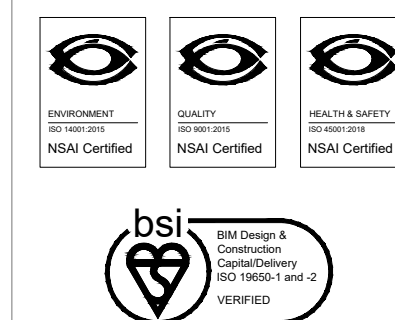


PLAN (POLYETHYLENE WATERMAIN)

• FOR SETTING OUT REFER TO ARCHITECT'S DRAWINGS.
 • THIS DRAWING TO BE READ IN CONJUNCTION WITH ALL OTHER ARCHITECTURAL AND ENGINEERING DRAWINGS AND ALL OTHER RELEVANT DRAWINGS AND SPECIFICATIONS.
 • DO NOT SCALE THIS DRAWING. USE FIGURED DIMENSIONS ONLY.
 • NO PART OF THIS DOCUMENT MAY BE REPRODUCED OR TRANSMITTED IN ANY FORM OR STORED IN ANY RETRIEVAL SYSTEM OF ANY NATURE WITHOUT THE WRITTEN PERMISSION OF O'CONNOR SUTTON CRONIN AS COPYRIGHT HOLDER EXCEPT AS AGREED FOR USE ON THE PROJECT FOR WHICH THE DOCUMENT WAS ORIGINALLY ISSUED.

Rev No.	Date	Revision Note	Drn by	Chkd by
C01	20/10/22	ISSUED FOR PLANNING	CW	CM

Rev No.	Date	Revision Note	Drn by	Chkd by



North Point House,
 North Point Business Park,
 New Mallow Road,
 Cork.
 TEL +353 (0)21 2355816
 e: contactus@ocsc.ie
 w: www.ocsc.ie
 Dublin | London | Belfast | Galway | Cork | Birmingham

Client: CORK COUNTY COUNCIL
 Project: RESIDENTIAL DEVELOPMENT
 CROSSHAVEN, LOWER ROAD
 Title: WATERMAIN DETAILS
 SHEET 3 OF 3
 Code Originator: Zone | Level | Type | Role | Number | Status | Revision
 C1003 OCSC · XX · XX · SK · C · 0024 A1 C01
 Date: 04/04/22 Scale: A/S @ A1 Drn by: CW Chkd by: CM Aprvd by: JMCB