



---

---

---

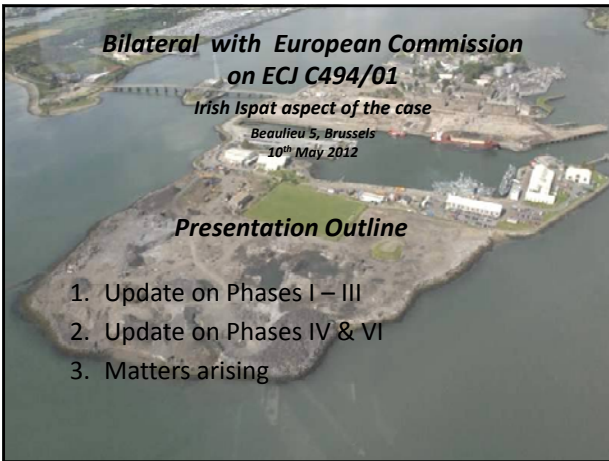
---

---

---

---

---



---

---

---

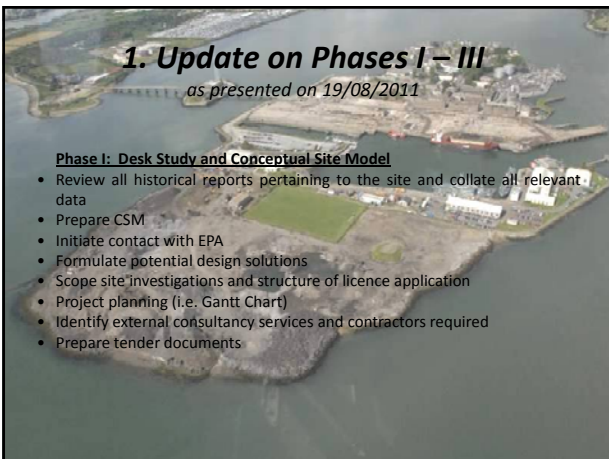
---

---

---

---

---



---

---

---

---

---

---

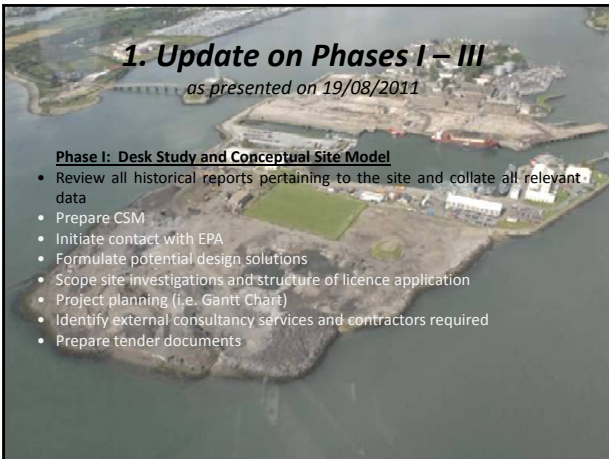
---

---

**1. Update on Phases I – III**  
*as presented on 19/08/2011*

**Phase I: Desk Study and Conceptual Site Model**

- Review all historical reports pertaining to the site and collate all relevant data
- Prepare CSM
- Initiate contact with EPA
- Formulate potential design solutions
- Scope site investigations and structure of licence application
- Project planning (i.e. Gantt Chart)
- Identify external consultancy services and contractors required
- Prepare tender documents



---

---

---

---

---

---

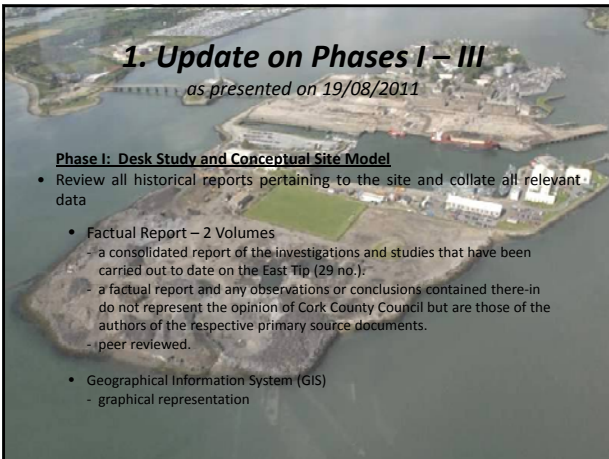
---

---

**1. Update on Phases I – III**  
*as presented on 19/08/2011*

**Phase I: Desk Study and Conceptual Site Model**

- Review all historical reports pertaining to the site and collate all relevant data
  - Factual Report – 2 Volumes
    - a consolidated report of the investigations and studies that have been carried out to date on the East Tip (29 no.);
    - a factual report and any observations or conclusions contained there-in do not represent the opinion of Cork County Council but are those of the authors of the respective primary source documents.
    - peer reviewed.
  - Geographical Information System (GIS)
    - graphical representation



---

---

---

---

---

---

---

---



---

---

---

---

---

---

---

---



---

---

---

---

---

---

---

---



---

---

---

---

---

---

---

---



---

---

---

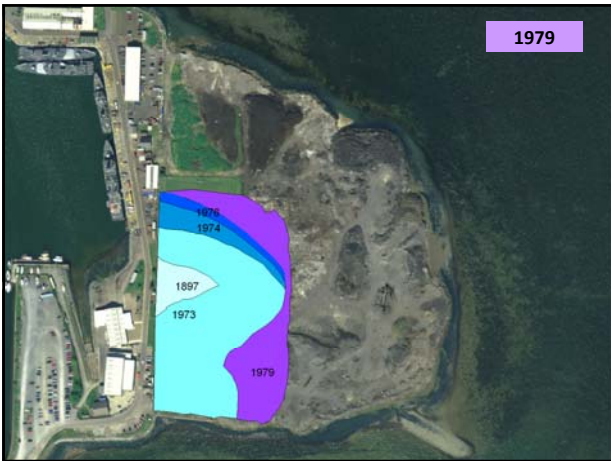
---

---

---

---

---



---

---

---

---

---

---

---

---



---

---

---

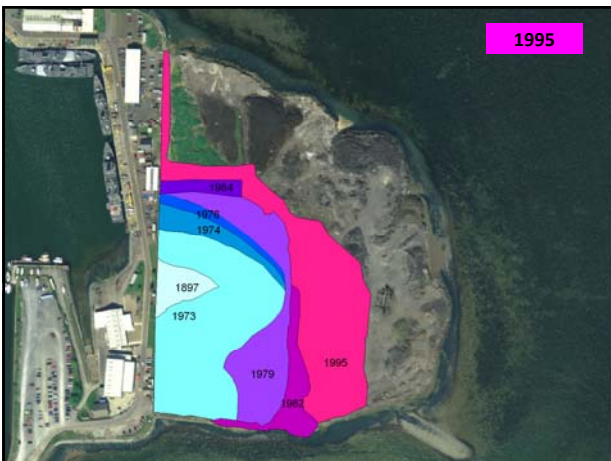
---

---

---

---

---



---

---

---

---

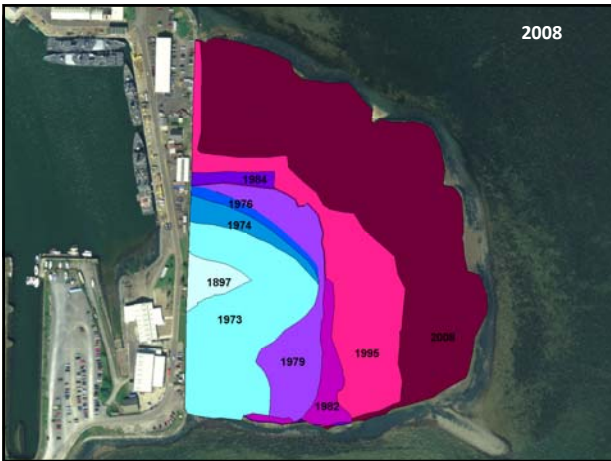
---

---

---

---





---

---

---

---

---

---

---

---

**1. Update on Phases I – III**  
as presented on 19/08/2011

**Phase I: Desk Study and Conceptual Site Model**

- Review all historical reports pertaining to the site and collate all relevant data
- Prepare CSM
- Initiate contact with EPA
- Formulate potential remediation solutions *On-going*
- Scope site investigations and structure of licence application
- Project planning (i.e. Gantt Chart)
- Identify external consultancy services and contractors required
- Prepare tender documents

**COMPLETE**

---

---

---

---

---

---

---

---

**1. Update on Phases I – III**  
as presented on 19/08/2011

**Phase II: Pre-Application Consultation with the EPA**

- Determine, based on historical data, what licence is envisaged i.e. hazardous or non-hazardous *On-going*
- Obtain approval, in principle, to proposed site investigation programme *N/A*
- Seek input/guidance from Agency regarding any shortcomings/anomalies/weaknesses identified in proposed methodology *On-going*
- Refine methodology *Complete*
- Schedule site work *Site works in progress*
- Tender advertisement(s) *Complete*

---

---

---

---

---

---

---

---

**1. Update on Phases I – III**  
*as presented on 19/08/2011*

**Phase III: Non-Intrusive Site Investigations**

- Comprehensive site survey (contour map)
- Geophysical site survey
- Refine intrusive investigation programme

---

---

---

---

---

---

---

---

**1. Update on Phases I – III**  
*as presented on 19/08/2011*

**Phase III: Non-Intrusive Site Investigations**

- Comprehensive site survey (contour map)
- Geophysical site survey
- Refine intrusive investigation programme

---

---

---

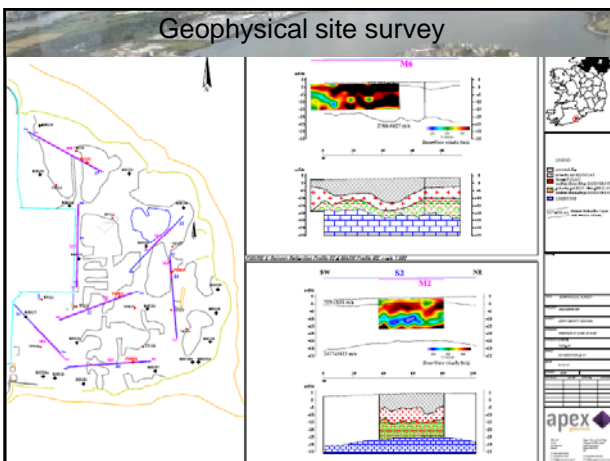
---

---

---

---

---



---

---

---

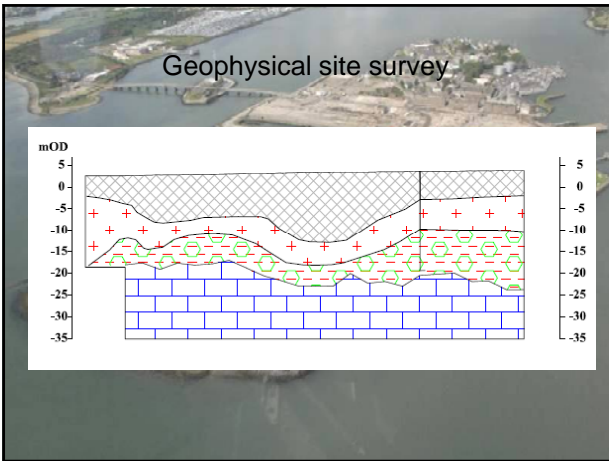
---

---

---

---

---



---

---

---

---

---

---

---

---

**1. Update on Phases I – III**  
*as presented on 19/08/2011*

**Phase III: Non-Intrusive Site Investigations**

- Comprehensive site survey, (contour map)
- Geophysical site survey
- Refine intrusive investigation programme

A large red "COMPLETE" stamp is overlaid on the text.

---

---

---

---

---

---

---

---

**2. Update on Phases IV, V & VI**

**Phase IV: Intrusive Site Investigations**

- Drilling, permeability assessment and geotechnical assessment
- Waste sampling
- Second phase of site survey (intrusive element)

**Phase V: Data Collation, QRA and EIS**

- Collate data from site investigations
- Identify/select and develop proposed design solution and formulate
- Develop computer model(s) and prepare dQRA
- Prepare EIS

**Phase VI: Prepare Licence Application**

- Integrate findings of various reports
- Prepare application
- Obtain signoff and submit

A large red "COMPLETE" stamp is overlaid on the text.

---

---

---

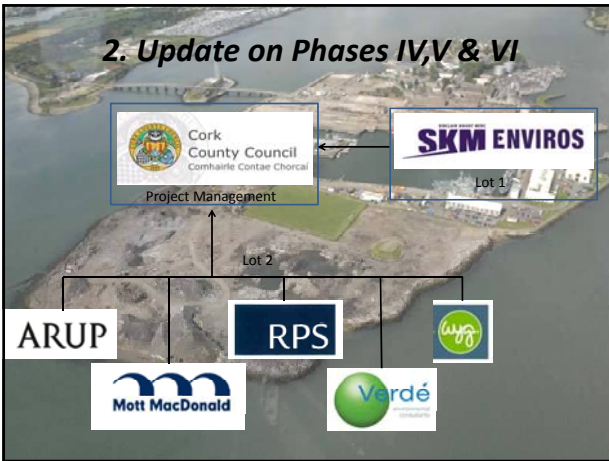
---

---

---

---

---



---

---

---

---

---

---

---

---

### 3. Matters Arising

- Classification of waste material and it's implications for licensing.
- Requirement for planning consent.

---

---

---

---

---

---

---

---

### 3. Matters Arising

Waste Classification

- Waste classification dictates licence type i.e. hazardous or non-hazardous .
- Waste classification dictates design constraints i.e. Annex I of the Landfill Directive (1999/31/EC).
- Generic approach - insufficient consideration given to the management of the risk.
- Potential that hazardous classification may be conferred on East-Tip by fact of presence of minority constituent [e.g. flue dust; EWC 10 09 09\*] while majority constituent may be non-hazardous [slag; EWC 10 02 01, 10 02 02 and 10 09 03]
- Not feasible to develop a hazardous landfill on the East Tip but a design solution can be implemented to manage any risk to human health and the environment i.e. sever the pollutant pathways.

---

---

---

---

---

---

---

---



### 3. Matters Arising

Environmental Impact Statement

- While it is not within the remit of the EPA to request an EIS there is a requirement to cross reference with an EIS.
- If an EIS is required for the planning process then a decision on the waste licence application will not be made until the EIA process is complete (ECJ 50/09).
- New legislation on EIA is forthcoming and it is envisaged that it will be effected prior to September 2012.
- It will now be necessary to prepare an EIS for submission with the waste licence application and it is envisaged that the licensing and planning processes will run concurrently rather than consecutively as initially envisaged.

---

---

---

---

---

---

---

---

### 3. Matters Arising

Environmental Impact Statement

- Previous timeline

Project Stage	Key Elements	Month
I	Finalise EIS & EIA	1-5
II	Finalise EIS & EIA	1-5
III	Finalise EIS & EIA	1-5
IV	Finalise EIS & EIA	1-5

---

---

---

---

---

---

---

---

### 3. Matters Arising

Environmental Impact Statement

- Revised timeline – best case scenario
- Original estimate of timeline as presented on 9<sup>th</sup> September was 14-16 months

Project Stage	Key Elements	Month
I	Finalise EIS & EIA	1-5
II	Finalise EIS & EIA	1-5
III	Finalise EIS & EIA	1-5
IV	Finalise EIS & EIA	1-5

---

---

---

---

---

---

---

---