

A new cycle network enhances the existing pedestrian network for the Georgian Quarter and improves access to key community destinations and points of interest.

## **PART III**

**High quality materials create an attractive public realm, which is easier to maintain over time.**



Figure: Discussion with stakeholders about proposals

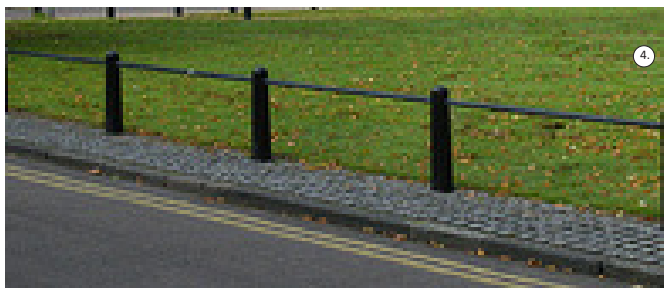


# Public realm precedents

## Furniture (diverse)

A suite of furniture has been developed for the Mitchelstown Georgian Quarter. Its dark grey colour, sober form and robust finishes unite the components to offer a timeless quality.

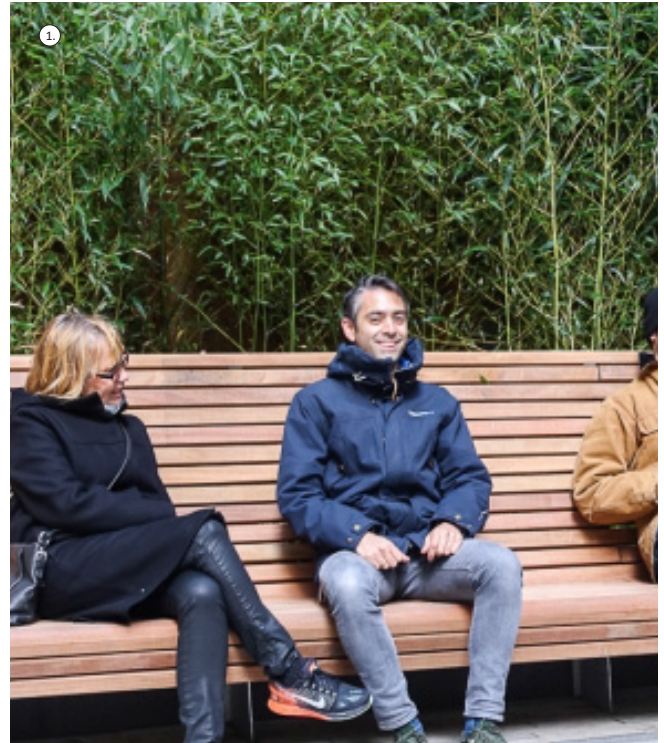
1. Finger post signage with chevrons. See detail.
2. Totem signage. See detail.
3. Street bins, if required.
4. Bollard and chain fence. See detail.
5. Street bollards.



## Furniture (seating)

All seating is wooden as this offers the most comfort and can be inexpensively repaired and maintained. Several types of seating or envisage from benches to back supports, integrated with planters to free standing seating. The exact selection of the seating is to be fixed in the detailed design, however nearly all seats will have a twin configuration. i.e. two seats per location.

1. Long seating areas with high back support (and arm rests)
2. Free standing bench with back support (and arm rests)
3. Free standing bench.
4. Integrated bench with back support for planter.





## Lighting

The lighting design has been completed to enhance the Georgian Quarter and all cable are to be undergrounded. See accompanying report. The lighting includes streetlights at 6m positions and light topped poles at 3.5m positions. Taller lights for the Square will offer multiple lights suitable for entertainment and events. Uplighters for King's Square and the canopy will offer dramatic effects, like key buildings which will be especially highlighted. All light fittings are to have a dark grey powder coated finishes to linking in with the colour of the furniture in general.

1. Streetlight
2. Event lighting
3. Light top street lighting
4. Uplighters
5. Image projector



④



⑤



①



③



## Surface finishes (stone)

The existing limestone kerbs, cobble drains and flagstones set the precedent for natural stone finishes in the Georgian Quarter. Two basic types of pavement surfacing are proposed. Concrete (pavers or poured in situ) for residential areas and natural stone for the most civically important areas. The exact finishes are to be fixed in the detailed design. Steps and planters on New market Square, the kerb for King's Square and various gulleys and drains are to be carried out in natural stone. All carriageways are to be carried out in asphalt.

1. Mix of limestone finishes
2. Limestone finishes
3. Granite, different formats
4. Limestone steps
5. Limestone dishing/ kerb

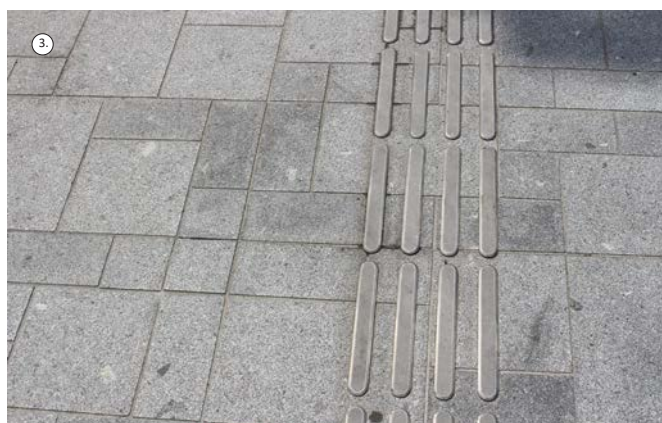




## Guidance, signalling and crossings

All crossings are to be marked with tactile paving in a contrasting colour to the surrounding surface. Line signaling for the visually impaired will be applied to public areas of the Georgian Quarter where necessary. We propose that the flagstones applied in many streets can act as a visual guidance instead of formal line markings, although these can also be applied as well if required in the detailed design. Punctuations at crossings with tactile paving, as mentioned, will be added. Many crossings are raised, but uncontrolled and will be highlighted with a distinguishable surface treatment for pedestrians. Raised crossings to street level will be dished for disability access.

1. Integrated line markings in stone
2. Raised pavement to street level dishing.
3. Line marking applied to pavement.
4. Uncontrolled crossing with tactile surface
5. Uncontrolled crossing at street level.





## Play and fitness

New market square is also a place to go and needs destinations. Play can happen in all parts of the Georgian Quarter and is largely unprogrammed. A programmed play area of a net and steel framed element is proposed for young children of 3 to 9 years old. This is a circuit of roughly 12m long and 8m wide located on a tectonic surface of artificial grass. A nearby seating area for parents to supervise has been designed. Fitness equipment for all ages but also teenagers is to be included.

1. Net and frame play element.
2. Fitness equipment.

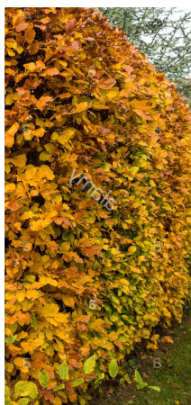
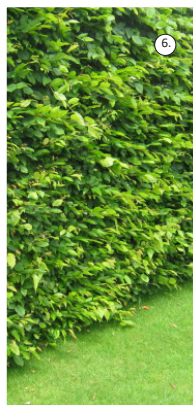




## Planting

Trees have been selected to tie in with the heritage of the Georgian Quarter. Lime trees are elegant street trees which are resistant and biodiverse and have been traditionally planted in Mitchelstown. These trees are to be reinstated in King's Square and planted around the edges of New market Square. all street trees planted into hard standing are to have a min of 16m<sup>3</sup> for small trees and 25m<sup>3</sup> for large trees as planting pits. Importantly

they will require a 4.5m to 5m clear stem for visibility at ground level. Smaller trees, with light canopies, Ginkgo Biloba have been selected for King Street to match the scale of the street and not hinder the historical vista. In New Market Square multi stemmed fruit trees with seasonal colour will be planted along the eastern edge of the parking areas. Shade loving, colorful bulbs are to be planted around the edges of the square. Colorful, festive



H1 - *Fagus sylvatica*



perennials are to fill the planters along Upper Cork Street. Most of the hedges planted are beech, with some areas of box hedging. A community pollinator and herb garden is located in the Square.

1. Lime trees
2. Ginko Biloba
3. Multi stemmed trees.
4. Shade loving bulbs
5. Colourful perennials
6. Hedges, beech and box
7. Community pollinator and herb garden.



## Grass and edges

Height differences for grassed areas on new market Square are to be retained with Corten steel edges.



## Grasscrete

Permeable green paving in the form of grasscrete is essential to redevelop a contemporary form of George's Street heritage profile. Some precedents are shown





## Appendix 1. Parking balance for project area

Area	Type	EX situation	NEW Design	Difference
New Market Square Internal	Angled Parking			
New Market Square External	Angled Parking			
New Market Square External	Parallel Parking	149	111	
New Market Square External	Disabled Parallel	8	5	
New Market Square External	Age Friendly Parking	0	5	
New Market Square External	Disabled Angled			
Total NMS		157	121	-36
Cork Street	Parallel Parking	9	9	
Cork Street	Bus Parking	3	3	
Cork Street	Disabled Parallel	1	1	
Total Cork St.		13	13	0
King St	Parallel Parking	29	34	
King St	Disabled Parallel	2	2	
Total King St.		31	36	5
Georges St	Parallel Parking	44	44	
Georges St	Perpendicular Parking	16	0	
Georges St	Disbaled Parking	0	2	
Total Georges St.		60	46	-14
King's Sqaure	Parallel Parking	86	78	
King's Sqaure	Angled Parking			
Total King's Square		86	76	-10

<b>Total</b>	<b>347</b>	<b>292</b>	<b>-55</b>
--------------	------------	------------	------------

\* Based on 6.4 x 2.1m for parallel parking & 4.2 x 2.1 for perpendicular parking

## Appendix 2. Revised layout of market

