

LEGEND:

— Boundary Line

× Site Notice Location



DO NOT SCALE FROM THIS DRAWING. WORK ONLY FROM FIGURED DIMENSIONS. ALL ERRORS AND OMISSIONS TO BE REPORTED TO CORK COUNTY COUNCIL DESIGN OFFICE.

THIS DRAWING TO BE READ IN CONJUNCTION WITH RELEVANT CONSULTANTS' DRAWINGS. COPYRIGHT © CORK COUNTY COUNCIL CPIU ARCHITECTS' DEPARTMENT 2020 - ALL RIGHTS RESERVED PERMISSION IS GIVEN FOR INDIVIDUALS TO USE THIS MATERIAL IN THE PREPARATION OF SPECIFICATION AND CONTRACTS ONLY. USE OF THIS INFORMATION FOR ANY OTHER COMMERCIAL PURPOSE IS PROHIBITED WITHOUT THE WRITTEN PERMISSION OF THE PUBLISHER.

NOTE:

Rev / Issue No.	Revision/Issue Description	Date

Rev / Issue No.	Revision/Issue Description	Date

Rev / Issue No.	Revision/Issue Description	Date
B	PART 8 PLANNING SUBMISSION	26.05.2023
A	FOR DISCUSSION	03.05.2023

CPIU Drawing Title: **EXISTING SITE LOCATION MAP**

Project Title: SHANTYMAN SCULPTURE SCHEME File Path: Z:\CP\ARCH\MD_3_1907_CIANCP_MD_3_1907_Shantymans_Sculpture
 Location: Drombeg, Co. Cork
 Project Stage: PART 8 Date: 26.05.2023
 Design Team: G. Vallone MIRIA Senior Architect
 S. O'Callaghan Architectural Post Graduate
 A. Polak Architectural Graduate
 E. Twigg Architectural Graduate
 Scale: 1:1000 @A3
 Job No: CPMD-1907

CPIU Aonad Feidhmithe Tionscadal Caipitil
 Sóisialta Inbhuanaítheacht Infeistíocht Tionscadal IRELAND 2040

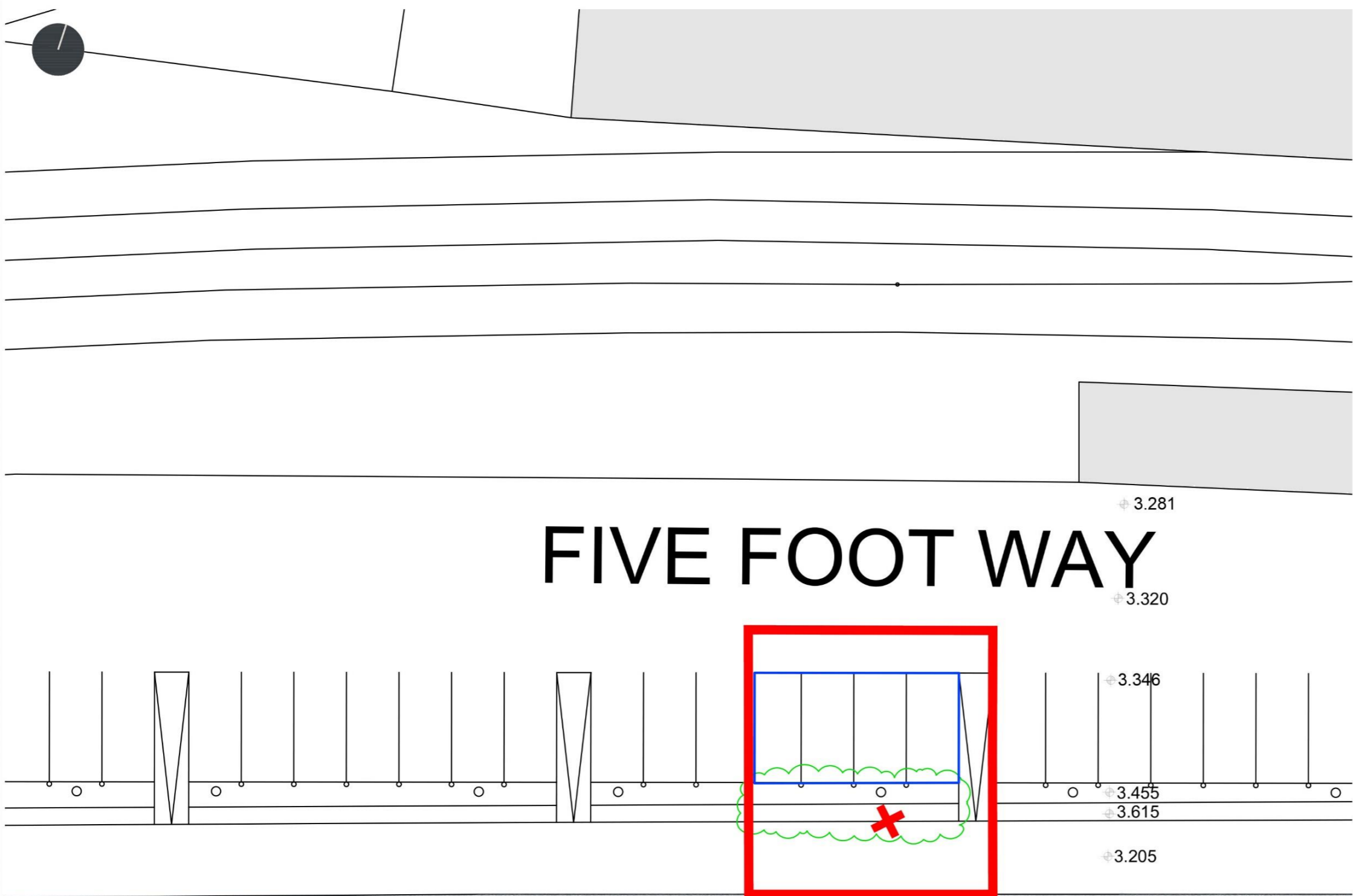
CPIU Capital Programme Implementation Unit
 Social Sustainability Investment Programme IRELAND 2040

Innealóir Contae | County Engineer: Kevin Morry
 Ailbe Síneasrach | Senior Architect: Giulia Vallone
 An Chliant | Client: Municipal Districts Cork

Comhairle Contae Chorcaí
 Contae Chorcaí, Heathfield, Aniarthaí Cúige agall
 Tionscadal Tulaí
 Heathfield, Chorcaí (Coimisiún) T12 R9K6, Éire

Cork County Council
 Water Services, Council Management & Flood Projects
 County Hall, COAH T12 R9K6, Ireland

T: +353 (0)21 426 5201 | E: capital.program@corkcoco.ie | W: www.corkcoco.ie



EXISTING SITE IMAGES

LEGEND:

- Boundary Line
- ✗ Site Notice Location
- ⊕ Levels
- Demolition of low concrete wall
- Removal of 4 car parking spaces

2.5m 7.5m

0m 5m 10m

DO NOT SCALE FROM THIS DRAWING. WORK ONLY FROM FIGURED DIMENSIONS. ALL ERRORS AND OMISSIONS TO BE REPORTED TO CORK COUNTY COUNCIL DESIGN OFFICE.

THIS DRAWING TO BE READ IN CONJUNCTION WITH RELEVANT CONSULTANTS' DRAWINGS. COPYRIGHT © CORK COUNTY COUNCIL CPIU ARCHITECTS' DEPARTMENT 2020 - ALL RIGHTS RESERVED PERMISSION IS GIVEN FOR INDIVIDUALS TO USE THIS MATERIAL IN THE PREPARATION OF SPECIFICATION AND CONTRACTS ONLY. USE OF THIS INFORMATION FOR ANY OTHER COMMERCIAL PURPOSE IS PROHIBITED WITHOUT THE WRITTEN PERMISSION OF THE PUBLISHER.

NOTE:

Rev / Issue No.	Revision/Issue Description	Date

Rev / Issue No.	Revision/Issue Description	Date

Rev / Issue No.	Revision/Issue Description	Date
B	PART 8 PLANNING SUBMISSION	26.05.2023
A	FOR DISCUSSION	03.05.2023

CPIU Drawing Title: EXISTING SITE LAYOUT

Project Title: SHANTYMAN SCULPTURE SCHEME File Path: Z:\CP\SHANTYMAN\1982_CPM3_MLS_1982_ShanTymn Sculpture

Project Stage: PART 8 Location: C:\ProgramData\Autodesk\LT23\BIN\CAD\1982_CPM3_MLS_1982_ShanTymn Sculpture.dwg

Design Team: G. Vallone MRVA Senior Architect Date: 26.05.2023 Draw No. 102
 S. O'Callaghan Architectural Post Graduate Scale: 1:200 @A3
 A. Polak Architectural Graduate Job No: CPM3-1987
 E. Twigg Architectural Graduate

CPIU Aonad Feidhmithe Tionscadal Caipitil
 Sóisialta Inbhuanaítheacht Infeistíocht Tionscadal IRELAND 2040

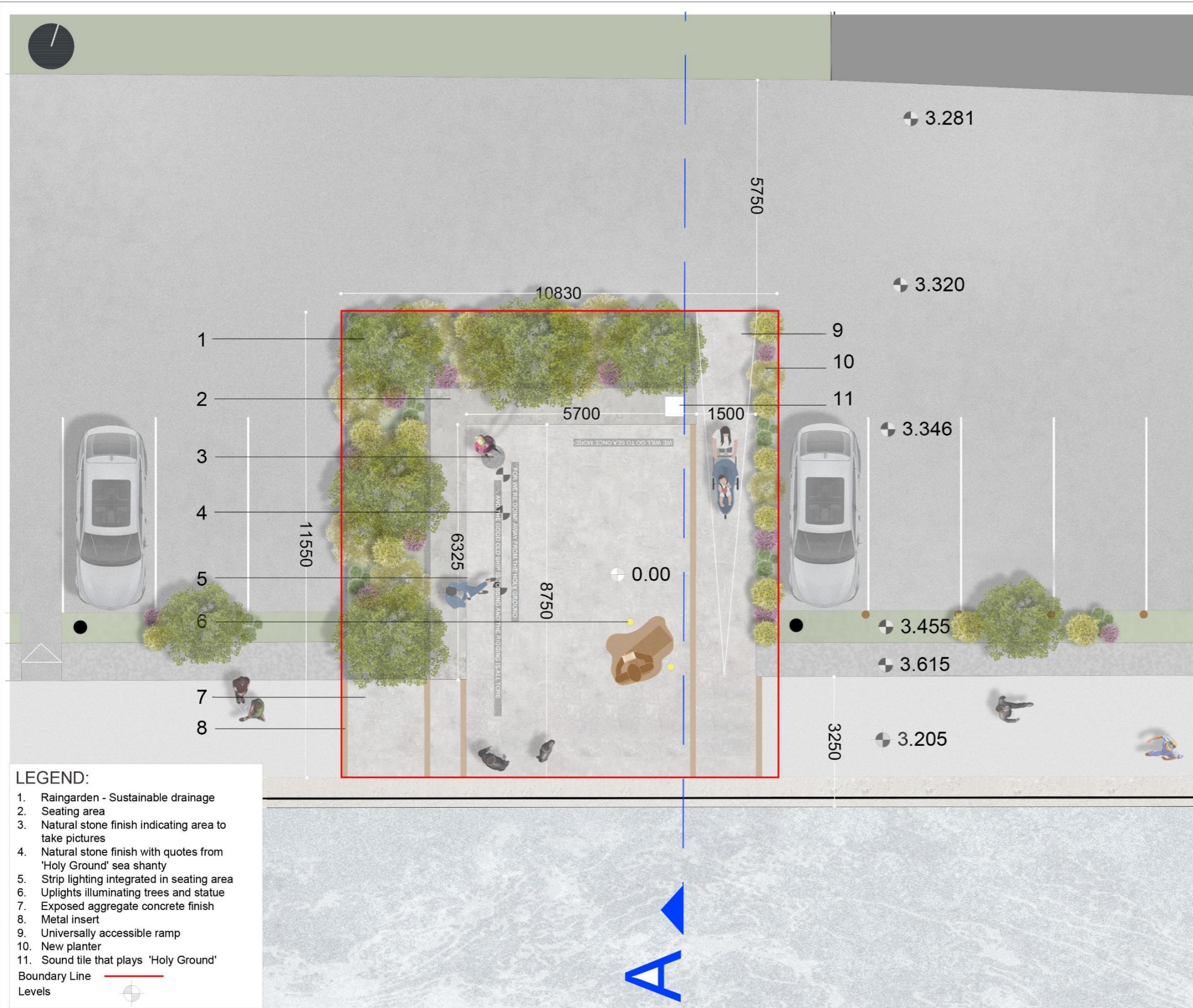
CPIU Capital Programme Implementation Unit
 Social Sustainability Investment Programme IRELAND 2040

Institiúil Contae | County Engineer: Kevin Morony
 Ailíní Sínearach | Senior Architect: Giulia Vallone
 An Chláint | Client: Municipal Districts Cork

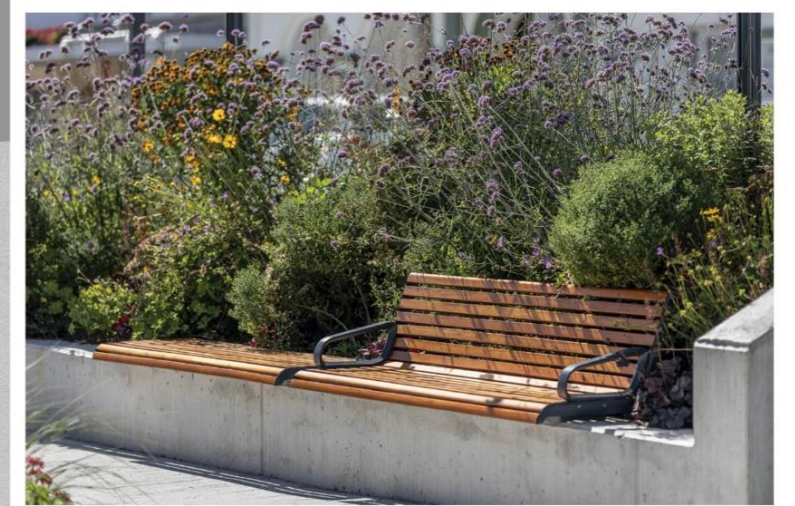
Comhairle Contae Chorcaí
 Contae Chorcaí, Bheanríocht, An tEaglais Chríste agus
 Tionscadal Tulaí
 Heath an Chorcaí | Cúigeach | T12 RCHC | Éire

Cork County Council
 Water Services, Coastal Management & Flood Projects
 County Hall | COBK | T12 RCHC | Ireland

T: +353 (0)21 428 5201 | E: capital.program@corkco.ie | W: www.corkco.ie



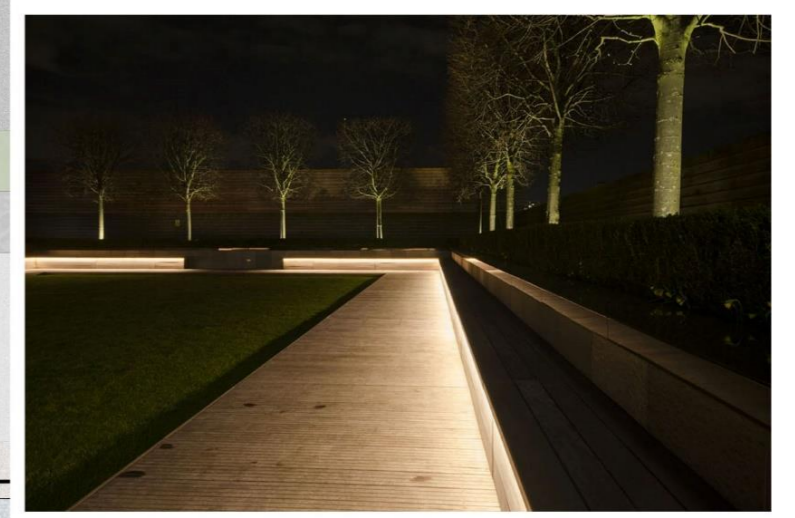
- LEGEND:**
1. Raingarden - Sustainable drainage
 2. Seating area
 3. Natural stone finish indicating area to take pictures
 4. Natural stone finish with quotes from 'Holy Ground' sea shanty
 5. Strip lighting integrated in seating area
 6. Uplights illuminating trees and statue
 7. Exposed aggregate concrete finish
 8. Metal insert
 9. Universally accessible ramp
 10. New planter
 11. Sound tile that plays 'Holy Ground'
- Boundary Line
- Levels



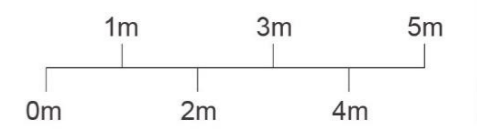
2. Example of seating area - Furnished



4. Example of engraved text in natural stone from previous project



5. Placemaking strip lighting integrated in seating area



CPIU Aonad Feidhmithe Tionscadal Caipitil
 Sóisialta Inbhuanaítheacht Infeistíocht Tionscadal IRELAND 2040

CPIU Capital Programme Implementation Unit
 Social Sustainability Investment Programme IRELAND 2040

2040

Innscrúlaíocht | County Engineer: Kevin Morry
 Ailbhe Síneasrach | Senior Architect: Giulia Vallone
 An Chláint | Client: Municipal Districts Cork

Comhairle Contae Chorcaí
 Contae Chorcaí, Bheanríocht, An tArdán Oifigeach
 Tionscadal Tulaí
 Heath an Chloiche (Cathair) T12 RCHC | Éire

Cork County Council
 Water Services, Coastal Management & Flood Projects
 County Hall | COAK T12 RCHC | Ireland

T: +353 (0)21 428 5201 | E: capital.program@corkcoco.ie | W: www.corkcoco.ie

DO NOT SCALE FROM THIS DRAWING. WORK ONLY FROM FIGURED DIMENSIONS.
 ALL ERRORS AND OMISSIONS TO BE REPORTED TO CORK COUNTY COUNCIL DESIGN OFFICE.
 THIS DRAWING TO BE READ IN CONJUNCTION WITH RELEVANT CONSULTANT'S DRAWINGS.
 COPYRIGHT © CORK COUNTY COUNCIL CPIU ARCHITECTS' DEPARTMENT 2020 - ALL RIGHTS RESERVED
 PERMISSION IS GIVEN FOR INDIVIDUALS TO USE THIS MATERIAL IN THE PREPARATION OF SPECIFICATION AND CONTRACTS ONLY. USE OF THIS INFORMATION FOR ANY OTHER COMMERCIAL PURPOSE IS PROHIBITED WITHOUT THE WRITTEN PERMISSION OF THE PUBLISHER.

NOTE:

Rev / Issue No.	Revision/Issue Description	Date

Rev / Issue No.	Revision/Issue Description	Date

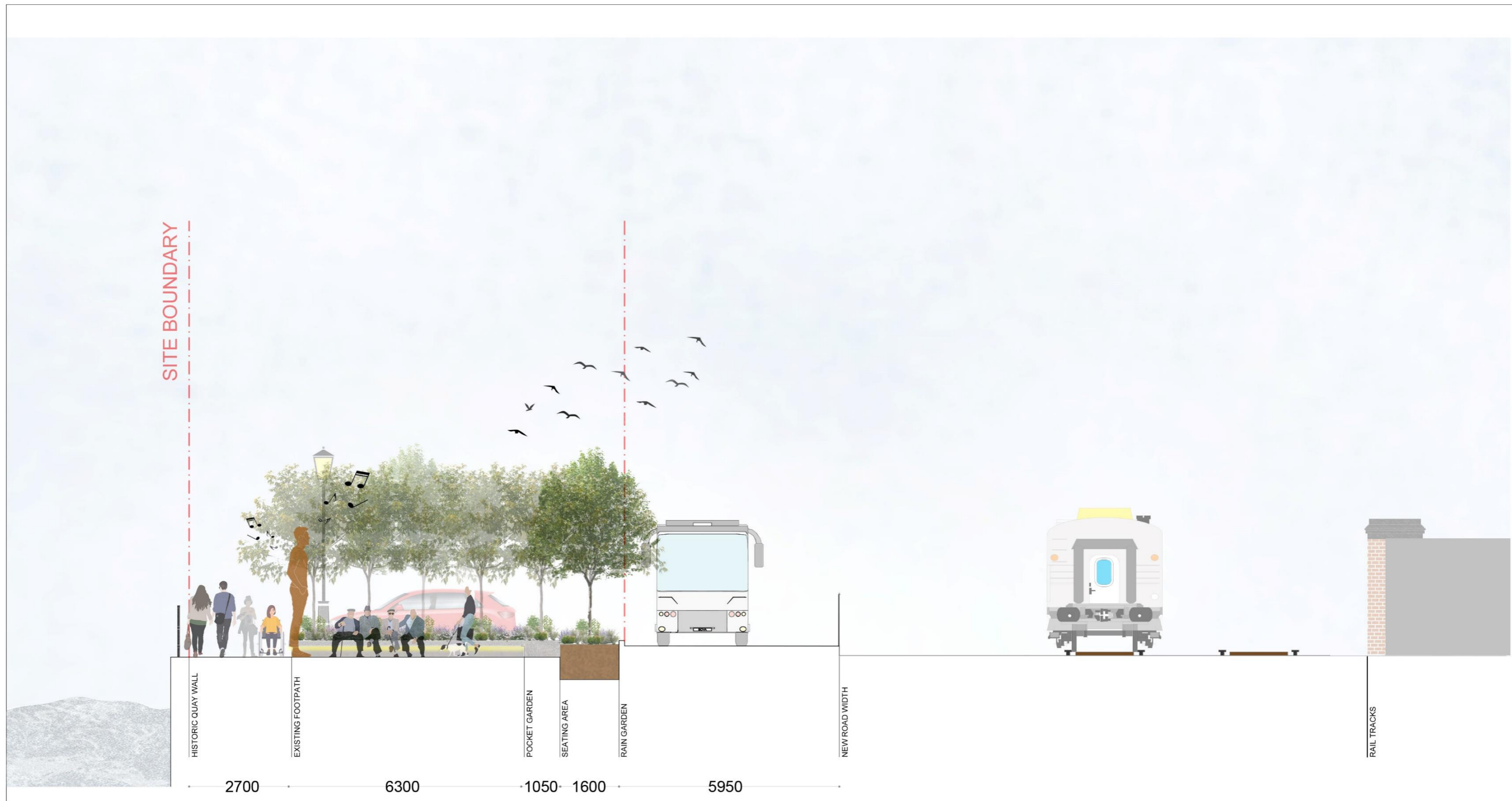
Rev / Issue No.	Revision/Issue Description	Date
B	PART 8 PLANNING SUBMISSION	26.05.2023
A	FOR DISCUSSION	03.05.2023

CPIU Drawing Title: **PROPOSED PLAN OF SHANTYMAN SCHEME**

Project Title: SHANTYMAN SCULPTURE SCHEME File Path: Z:\CP\SHANTYMAN\SHANTYMAN_SCP\M03_1982_C6A\CP_M03_1982_Shantyman_Sculpture

Project Stage: PART 8 Location: C:\Users\G\Documents\CP\SHANTYMAN\SHANTYMAN_SCP\M03_1982_C6A\CP_M03_1982_Shantyman_Sculpture.dwg

Design Team: G. Vallone MRVA Senior Architect Date: 26.05.2023 Des. No.: 201
 S. O'Connell Architectural Post Graduate Scale: 1:100 @A3
 A. Polak Architectural Graduate Job No.: CPMS-1987
 E. Twigg Architectural Graduate



CPIU Aonad Feidhmithe Tionscadal Caipitil
 Sóisialta Inbhuanaitheacht Infheistíocht Tionscadal IRELAND 2040

CPIU Capital Programme Implementation Unit
 Social Sustainability Investment Programme IRELAND 2040

Innealóir Contae | County Engineer: Kevin Morley
 Ailíní Síneasraoch | Senior Architect: Giulia Vallone
 An Chlárait | Client: Municipal Districts Cork

Comhairle Contae Chorcaí
 Contae Chorcaí, Heathfield, Aniaráil Chlárait
 Tionscadal Tulaí
 Heathfield, Chorcaí (Co. Cork) | T12 R9K6 | Éire

Cork County Council
 Water Services, Capital Management & Flood Projects
 County Hall | COAK | T12 R9K6 | Ireland

DO NOT SCALE FROM THIS DRAWING. WORK ONLY FROM FIGURED DIMENSIONS.
 ALL ERRORS AND OMISSIONS TO BE REPORTED TO CORK COUNTY COUNCIL DESIGN OFFICE.
 THIS DRAWING TO BE READ IN CONJUNCTION WITH RELEVANT CONSULTANT'S DRAWINGS.
 COPYRIGHT © CORK COUNTY COUNCIL CPIU ARCHITECTS' DEPARTMENT 2020 - ALL RIGHTS RESERVED
 PERMISSION IS GIVEN FOR INDIVIDUALS TO USE THIS MATERIAL IN THE PREPARATION OF SPECIFICATION AND CONTRACTS ONLY. USE OF THIS INFORMATION FOR ANY OTHER COMMERCIAL PURPOSE IS PROHIBITED WITHOUT THE WRITTEN PERMISSION OF THE PUBLISHER.

NOTE:

Rev / Issue No.	Revision/Issue Description	Date

Rev / Issue No.	Revision/Issue Description	Date

Rev / Issue No.	Revision/Issue Description	Date

CPIU Drawing Title: PROPOSED SECTION AA OF SHANTYMAN SCULPTURE SCHEME

Project Title: SHANTYMAN SCULPTURE SCHEME File Path: Z:\CP_ARCH\2021\1902_Cork\CP_ARCH\1902_Shantymán\SectionAA.dwg
 Location: Heathfield, Cork
 Project Stage: PART 8

Design Team: G. Vallone MRVA Senior Architect Date: 26.05.2023
 S. O'Callaghan Architectural Post Graduate Scale: 1:100 @A3
 A. Polak Architectural Graduate Job No: CPMS-1907
 E. Twohig Architectural Graduate

301

T: +353 (0)21 428 5201 | E: capital.program@corkcoco.ie | W: www.corkcoco.ie



NOTE:

Rev / Issue No.	Revision/Issue Description	Date

Rev / Issue No.	Revision/Issue Description	Date

Rev / Issue No.	Revision/Issue Description	Date
B	PART 8 PLANNING SUBMISSION	26.05.2023
A	FOR DISCUSSION	03.05.2023



DO NOT SCALE FROM THIS DRAWING. WORK ONLY FROM FIGURED DIMENSIONS.
 ALL ERRORS AND OMISSIONS TO BE REPORTED TO CORK COUNTY COUNCIL DESIGN OFFICE.
 THIS DRAWING TO BE READ IN CONJUNCTION WITH RELEVANT CONSULTANT'S DRAWINGS.
 COPYRIGHT © CORK COUNTY COUNCIL CPIU ARCHITECTS' DEPARTMENT 2020 - ALL RIGHTS RESERVED.
 PERMISSION IS GIVEN FOR INDIVIDUALS TO USE THIS MATERIAL IN THE PREPARATION OF SPECIFICATION AND CONTRACTS ONLY. USE OF THIS INFORMATION FOR ANY OTHER COMMERCIAL PURPOSE IS PROHIBITED WITHOUT THE WRITTEN PERMISSION OF THE PUBLISHER.

NOTE:

Rev / Issue No.	Revision/Issue Description	Date

Rev / Issue No.	Revision/Issue Description	Date

Rev / Issue No.	Revision/Issue Description	Date
B	PART 8 PLANNING SUBMISSION	26.05.2023
A	FOR DISCUSSION	03.05.2023

 CPIU Urban Design Public Realm Team Urban Design Lead: Peter O'Connell	Drawing Title: PROPOSED VISTA OF SHANTYMAN SCULPTURE SCHEME	
	Project Title: SHANTYMAN SCULPTURE SCHEME	File Path: C:\CPIU_ARCHITECTS\2023\05_26_CPMO_1907_Shan\Shantymán Sculpture Location.dwg
Project Stage: PART 8	Design Team: G. Vallone MRVA Senior Architect S. O'Callaghan Architectural Post Graduate A. Piskal Architectural Graduate E. Twich Architectural Graduate	Date: 26.05.2023
Scale: 1:50	Job No: CPMO-1907	Dep. No: 401



CPIU Aonad Feidhmithe Tionscadal Caipitil
 Sóisialta Inbhuanaitheacht Infheistíocht Tionscadal IRELAND 2040

CPIU Capital Programme Implementation Unit
 Social Sustainability Investment Programme IRELAND 2040

Innovative Contact | County Engineer: Kevin Morley
 Ailbhe Smeorach | Senior Architect: Giulia Vallone
 An Chlárait | Client: Municipal Districts Cork

Comhairle Contae Chorcaí
 Contae Chorcaí, Heathfield, An tOileán Cléire agus
 Tionscadal Tulaí
 Heathfield, Chorcaí, Co. Cork | T12 R2K6 | Éire

Cork County Council
 Water Services, Capital Management & Flood Projects
 County Hall | COBK | T12 R2K6 | Ireland

T: +353 (0)21 428 5201 | E: capital.program@corkcoco.ie | W: www.corkcoco.ie

DO NOT SCALE FROM THIS DRAWING. WORK ONLY FROM FIGURED DIMENSIONS.
 ALL ERRORS AND OMISSIONS TO BE REPORTED TO CORK COUNTY COUNCIL DESIGN OFFICE.
 THIS DRAWING TO BE READ IN CONJUNCTION WITH RELEVANT CONSULTANT'S DRAWINGS.
 COPYRIGHT © CORK COUNTY COUNCIL CPIU ARCHITECTS' DEPARTMENT 2020 - ALL RIGHTS RESERVED
 PERMISSION IS GIVEN FOR INDIVIDUALS TO USE THIS MATERIAL IN THE PREPARATION OF SPECIFICATION AND CONTRACTS ONLY. USE OF THIS INFORMATION FOR ANY OTHER COMMERCIAL PURPOSE IS PROHIBITED WITHOUT THE WRITTEN PERMISSION OF THE PUBLISHER.

NOTE:

Rev / Issue No.	Revision/Issue Description	Date

Rev / Issue No.	Revision/Issue Description	Date

Rev / Issue No.	Revision/Issue Description	Date
B	PART 6 PLANNING SUBMISSION	26.05.2023
A	FOR DISCUSSION	03.05.2023

CPIU Drawing Title: **PROPOSED VISTA FROM SHANTYMAN SCULPTURE SCHEME**

Project Title: SHANTYMAN SCULPTURE SCHEME File Path: C:\CP\ARCH\360_3_1907_CorkCOP_360_3_1907_Shantyman Sculpture
 Location: Dromegda
 Project Stage: PART 6 Path: C:\CP\ARCH\360_3_1907_CorkCOP_360_3_1907_Shantyman Sculpture\Location.dwg

Design Team: G. Vallone MRVA Senior Architect Date: 26.05.2023
 S. O'Callaghan Architectural Post Graduate Scale: 1:100 @A3
 A. Polak Architectural Graduate Job No: CPMS-1507
 E. Twigg Architectural Graduate

402