



Comhairle Contae Chorcaí  
Cork County Council

# Draft Socio-Economic Statement and High Level Goals



Local Economic & Community Plan  
2023-2029





Comhairle Contae Chorcaí  
Cork County Council

# INTRODUCING THE LOCAL ECONOMIC AND COMMUNITY PLAN (LECP)



## INTRODUCING THE LOCAL ECONOMIC AND COMMUNITY PLAN (LECP)

### The Vision for the LECP

The vision for the Cork County LECP reflects the vision of the Cork County Development Plan and is to: “Promote and support the development of County Cork as an attractive, competitive and sustainable place to live, visit and do business, where the quality of its economy, natural and built environment, culture and the strength and viability of its rural and urban communities are to the highest standards.”

### What is a Local Economic and Community Plan?

A Local Economic and Community Plan (LECP) is a key statutory plan prepared under the 2014 Local Government and Reform Act which outlines the objectives and actions required by the local authority to promote and support both the economic development and community development in their region, both by the local authority and in partnership with other economic and community development stakeholders. Cork County Council has commenced working on its Local Economic and Community Plan for 2023-2029 which will supersede and build on the previous LECP, 2016-2021.

### Why do we need a Local Economic and Community Plan?

Local Economic and Community Plans (LECP) are statutory plans which support the sustainable development of our counties, and the State as a whole. As has been outlined in the 2014 Local Government and Reform Act, each local authority’s LECP forms the local element of the national development framework and plays an important role in supporting collaboration to improve the quality of life for our citizens and our communities. The 2023-2029 LECP for Cork County will play a critical role in shaping the fabric of our communities in Cork County and help to enable the region to continue to thrive and prosper. The plan will be evidence-based and will be strongly informed by stakeholders across Cork County.

### What does the Local Economic and Community Plan cover?

The Local Economic and Community Plan for Cork County has an important role in supporting and promoting economic and community development in the County. It will provide a key framework to identify actions that can be implemented at a local level to meet the plan’s goals and objectives and will support relevant project and initiatives to access national and international funding. The LECP does not have a role in zoning land. The spatial plan for the County is the Cork County Development Plan 2022 and the LECP is required to be consistent with the policies, objectives and zoning of the Development Plan.

### Who is the Local Economic and Community Plan for?

Everyone. This is **OUR** Local Economic and Community Plan for Cork County, and it will have a direct impact on services, supports and amenities in Cork County. The principle of co-creation underpins the development process of this LECP and **ALL** citizens in Cork County will have the opportunity to contribute to its development and shape the future of **OUR** county.





## How is the Plan developed?

There are six phases in the development of this LECP for Cork County:

<b>STAGE 1, PREPARATION</b>	Cork County Council must prepare a socio-economic statement, which outlines the current social and economic status of Cork County, and develop a series of High-Level Goals based on this statement.
<b>STAGE 2, PUBLIC CONSULTATION</b>	Public consultation will then open, where the public and key organisations will be invited to provide their views on the socio-economic statement and High-Level Goals. These will be reviewed and revised based on the feedback received during the consultation period.
<b>STAGE 3, DEVELOP OBJECTIVES AND OUTCOMES</b>	Following public consultation, specific, measurable, and sustainable objectives will be developed, as well as desired outcomes over the six-year period of the Cork County LECP. These will be underpinned and supported by clear Actions, which will be outlined in an Implementation Plan for the LECP.
<b>STAGE 4, FINALISATION</b>	The draft Framework LECP will be finalised and approved to commence implementation.
<b>STAGE 5, IMPLEMENTATION</b>	The Cork County 2023-2029 LECP will be launched, and work will commence of implementing the plan and achieving the objectives.
<b>STAGE 6, MONITORING AND EVALUATION</b>	The implementation of the LECP will be monitored and reviewed regularly to ensure that the plan is delivered successfully. Cork County Council will be required to report regularly on the progress made on implementing the plan.

## LECP Advisory Group

The Cork County LECP Advisory Group comprises of 31 stakeholders which represent a wide range of key community and economic organisations and groups. Stakeholders include representatives from: the Economic Development and Enterprise SPC, North Cork LCDC, South Cork LCDC, West Cork LCDC, South Cork Local Enterprise Office, Cork North and West Local Enterprise Office, IDA, Climate Action Regional Office, Energy Cork, Transport Infrastructure Ireland, STEM Southwest, Irish Water, University College Cork, Munster Technological University, National Transport Authority, Public Participation Network, Cork Education and Training Board, HSE, Cork Chamber, Southern Regional Assembly, Údarás na Gaeltachta, Enterprise Ireland, IBEC, Visit Cork and Cork County Council Elected Members and Executive. The Advisory Group has a central role in reviewing and drafting the LECP. The group met on 24th March to review and advise on the content of this document. They will meet at each of the key stages in the development of the Framework LECP.

Cork County Council has now completed **Stage 1, Preparation** of the LECP process. This document outlines the draft socio-economic statement and High-Level Goals for the Cork County LECP 2023-2029.

We are now asking YOU for your support in **Stage 2, Public Consultation**, to review this document and provide your views and opinions to help shape the future of OUR county.



### How can I get involved in the Public Consultation?

The Public Consultation Period will run from 15th May 2023 to 26th June 2023. This is in line with Section 66C(2) (i) and Section 66C(3)(i) of the 2014 Local Government Reform Act which necessitates public consultation on both the economic and community elements of the LECP.

Cork County Council will be hosting the following series of in-person events to provide stakeholders and all citizens of Cork County with an opportunity to engage with the 2023-2029 Cork County LECP and enable them to influence and shape the contents of the plan.

#### **Tuesday 16th May**

Session 1:

Session 2:

#### **Clonakilty Park Hotel**

1:00pm – 3:00pm

5:30pm – 7:30pm

#### **Thursday 18th May**

Session 1:

Session 2:

#### **Hibernian Hotel Mallow**

1:00pm – 3:00pm

5:30pm – 7:30pm

#### **Monday 22nd May**

Session 1:

Session 2:

#### **Radisson Blu Hotel Little Island**

1:00pm – 3:00pm

6:00pm – 8:00pm

Further details of these events will be publicised on [www.corkcoco.ie](http://www.corkcoco.ie), the Council's social media channels and in local newspapers.

### Virtual Room

A Virtual Room will be available for the duration of the consultation period. The Virtual Room will include:

- Recordings of presentations on various aspects of the Draft Socio-Economic Statement and High Level Goals;
- Ability to view and download all relevant documents
- FAQ section
- Ability to make a submission
- To access the virtual room visit [www.corkcoco.ie](http://www.corkcoco.ie)

Submissions can also be made online by using our online feedback portal at [www.corkcoco.ie](http://www.corkcoco.ie), or you can post your written submission to:

LECP Team, Business Growth Hub, Cork County Council, County Hall, Carrigrohane Road, Cork, T12 R2NC.

We strongly encourage **YOU** to participate, make **YOUR** voice heard and shape **OUR** county for the better.



## STRUCTURE OF THE LOCAL ECONOMIC AND COMMUNITY PLAN

### Review of the Cork County 2016-2021 LECP

As part of the development process of the new Local Economic and Community Plan (LECP) 2023-2029 for Cork County, a desk-based review has taken place of the previous plan, and the findings of this review have been used to inform the new High-Level Goals. This desk-based review has also been supported and complemented by a focused engagement process with relevant stakeholders.

In terms of the key findings, stakeholders recognised the aspirational nature of the previous plan and its support in delivering targeted funding for local economic and community development. Focus is needed on ensuring that the goals and objectives of the plan are underpinned by deliverable and implementable actions, which are attributed and owned by relevant bodies/organisation, including Cork County Council. This will be essential to ensure that the new LECP addresses some of the key national priority areas, including climate action and biodiversity, and urban and rural regeneration. The recommendations of this review process will enable the new LECP to build on the successes of the previous plan and deliver an ambitious and implementable plan which will support the economic and community development of Cork County.

### How is this document structured?

This report details quantifiable data in relation to the current social and economic status of Cork County and uses this data to inform a series of High-Level Goals. Each High-Level Goal outlines specific social and economic data relevant to it and discusses potential objectives and outcomes that Cork County Council will strive to achieve over the lifetime of the LECP. Furthermore, each High-Level Goal poses a number of questions for stakeholders and all citizens to consider when reviewing the document. These questions (and the opinions of Cork County citizens in relation to these questions) are key areas that we wish to explore and consider during public consultation.

### What is a High-Level Goal?

A High-Level Goal is an idea of the future or a desired result that an individual/group/organisation envision, plan and commit to achieve. Within the scope of this LECP, this definition can be summarised as a specific vision that Cork County Council wishes to deliver or achieve either directly or in partnership with other economic and community development stakeholders during the lifetime of the LECP (2023-2029). High-Level Goals are the fundamental aims of this plan and represent, at a high-level, how we envisage Cork County developing during the next six years.

Each High-Level Goal is supported by several objectives. These interrelated objectives are key priority areas and factors which are intrinsically linked to the High-Level Goal and are important to achieve in order to most effectively deliver the desired results of this plan.

Objectives will be underpinned and supported by specific Actions, which will be detailed within the Implementation Plans in Phase 2. Actions will be designed within the SMART framework (Specific, Measurable, Achievable, Relevant and Time-Bound) and will be an essential component of the LECP. They will be central to achieving the High-Level Goals and objectives of Cork County's 2023-2029 plan and will have key impacts on service delivery in the community. Cork County Council will be required to report on the implementation of these actions to the relevant government department.



## Structure of the Local Economic and Community Plan



### Cross Cutting Issues

The Draft High Level Goals and Objectives detailed in this document form part of the Strategic Framework of the LECP. Due to the Strategic focus of the document, the wording of the objectives in general, do not specify specific groups or individuals. However, it is intended that the objectives relate to all groups, sectors and members of our community in Cork County.

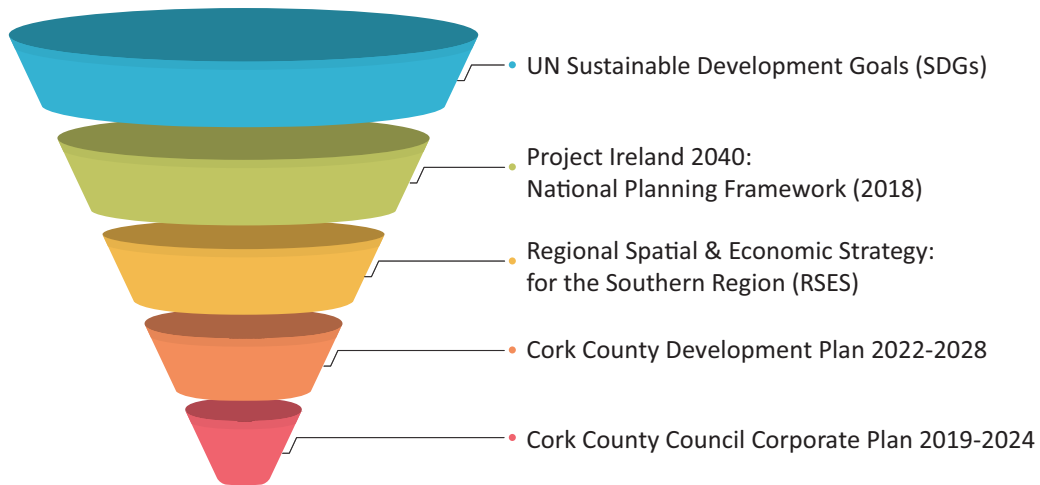




## POLICY CONTEXT OF THE LECP

### Policy Context

The Cork County Local Economic and Community Plan is an integral framework for delivering local economic and community actions from EU, national, and regional policies, and strategies. This wider policy context sets out best practices and underpins the development of our High-Level Goals to ensure prosperous growth at a local level in Cork County over the next six years.



### UN Sustainable Development Goals (SDGs)

A key component of the 2023-2029 Cork County LECP is that it must be developed within the context of the principles of sustainable development. The United Nation’s 2030 Agenda for Sustainable Development (adopted by all UN Member States in 2015) outlines a set of 17 Sustainable Development Goals (SDGs) which provide a blueprint to end poverty, fight inequality and injustice, and tackle climate change by 2030. The UN SDGs critically recognise that ending poverty and other deprivations is intrinsically linked to strategies that improve health and education, reduce inequality, and foster economic growth. They are also fundamentally positioned with strategies and policies that tackle climate change and enhance environmental protection. Ireland has made a commitment to ensure that the SDGs are fully considered in all Government policies and processes, and, as such, they are a fundamental consideration for the Cork County LECP process.





### Project Ireland 2040: National Planning Framework (2018)

The National Planning Framework (NPF) is Ireland's overarching policy and planning framework for the social, economic, and cultural development of our country over the next 20+ years. The NPF draws upon lessons learned from the National Spatial Strategy 2002-2022 and sets out a new vision based on a set of values that will ensure Ireland's long-term economic, environmental, and social progress for all parts of our country. The NPF also set the context for Ireland's three regional assemblies to develop their Regional Spatial and Economic Strategies. The NPF aims to create a single vision, a shared set of goals for every community across the country. These goals are expressed in the Framework as National Strategic Outcomes.

- Compact Growth
- Enhanced Regional Accessibility
- Strengthened Rural Economies and Communities
- Sustainable Mobility
- A Strong Economy, supported by Enterprise, Innovation and Skills
- High-Quality International Connectivity
- Enhanced Amenities and Heritage
- Transition to a Low Carbon and Climate Resilient Society
- Sustainable Management of Water, Waste and other Environmental Resources
- Access to Quality Childcare, Education and Health Services



Baltimore Beacon



### Regional Spatial & Economic Strategy: for the Southern Region (RSES)

The RSES sets out the strategic regional development framework for the Southern Region, with a primary aim to implement Project Ireland 2040 - the National Planning Framework, at a regional level and to support a balanced and equitable regional growth plan. This plan identifies Cork County amongst the fastest-growing locations in the State over the next 20 years. The overall vision of the RSES for the Southern Region is to:

- Achieve economic prosperity and improved quality of life for all our citizens
- Accommodate expanded growth and development in suitable locations; and
- Make the Southern Region one of Europe’s most creative, innovative, greenest and liveable regions

### Cork County Development Plan 2022-2028

The County Development Plan guides the future growth and sustainable development of our county over the plan period from 2022 to 2028. The plan sets out an approach centred on the core principle of sustainability with a focus on creating vibrant, liveable, climate-resilient communities. This plan is consistent with both the National Planning Framework and the Regional Spatial and Economic Strategy. This Development Plan is a document which details the overall strategy of the planning authority for the proper planning and sustainable development of County Cork taking into account national and regional planning guidelines, strategies and policy documents. It is also informed by particular national and global environmental issues as set out in the key principles which under pin the document.

At a high level, the Cork County Development Plan 2022-2028 aims to “provide for the development of County Cork as an attractive, competitive and sustainable place to live, visit and do business, where the quality of its economy, natural and built environment, culture and the strength and viability of its rural and urban communities are to the highest standards”.



Knockadoon Head Signal Tower



### Cork County Council Corporate Plan 2019-2024

This unique and reactive document contains the aims and actions which will inform and guide the Council's activities over this time. The Council's Corporate Plan outlines the core values, vision and aspirations of Cork County Council as well as defining the Council's significant role in directing policy and development.

### Other Relevant Policy Documents/Frameworks

The Cork County LECP 2023-2029 is in compliance with a significant number of other relevant national and regional policy documents and frameworks, including:

- Driving Recovery and Sustainable Growth, 2021-2024 (2021)
- Economic Recovery Plan 2021 (2021)
- Enterprise 2025 Renewed: Building resilience in the face of global challenges (2018)
- Get Ireland Active – The National Physical Activity Plan for Ireland (2016)
- Healthy Ireland – A framework for improved health and wellbeing, 2013-2025 (2013)
- Healthy Ireland Strategic Action Plan 2021–2025 (2021)
- Housing for All – A New Housing Plan for Ireland (2021)
- Leading in a changing world: Strategy 2022–2024 (2022)
- National Positive Ageing Strategy (2016)
- Our Rural Future Rural Development Policy 2021-2025 (2021)
- Regional Enterprise Plan to 2024: South-West (2022)
- National Smart Specialisation Strategy for Innovation 2022-2027
- Future FET: Transforming Learning The National Further Education and Training (FET) Strategy
- Building Future Skills: The Demand for Skills in Ireland's Built Environment Sector to 2030
- National Plan for Equity of Access to Higher Education 2015-2021



Doneraile Court



Comhairle Contae Chorcaí  
Cork County Council

# SOCIO-ECONOMIC PROFILE OF CORK COUNTY





## SOCIO-ECONOMIC PROFILE OF COUNTY CORK

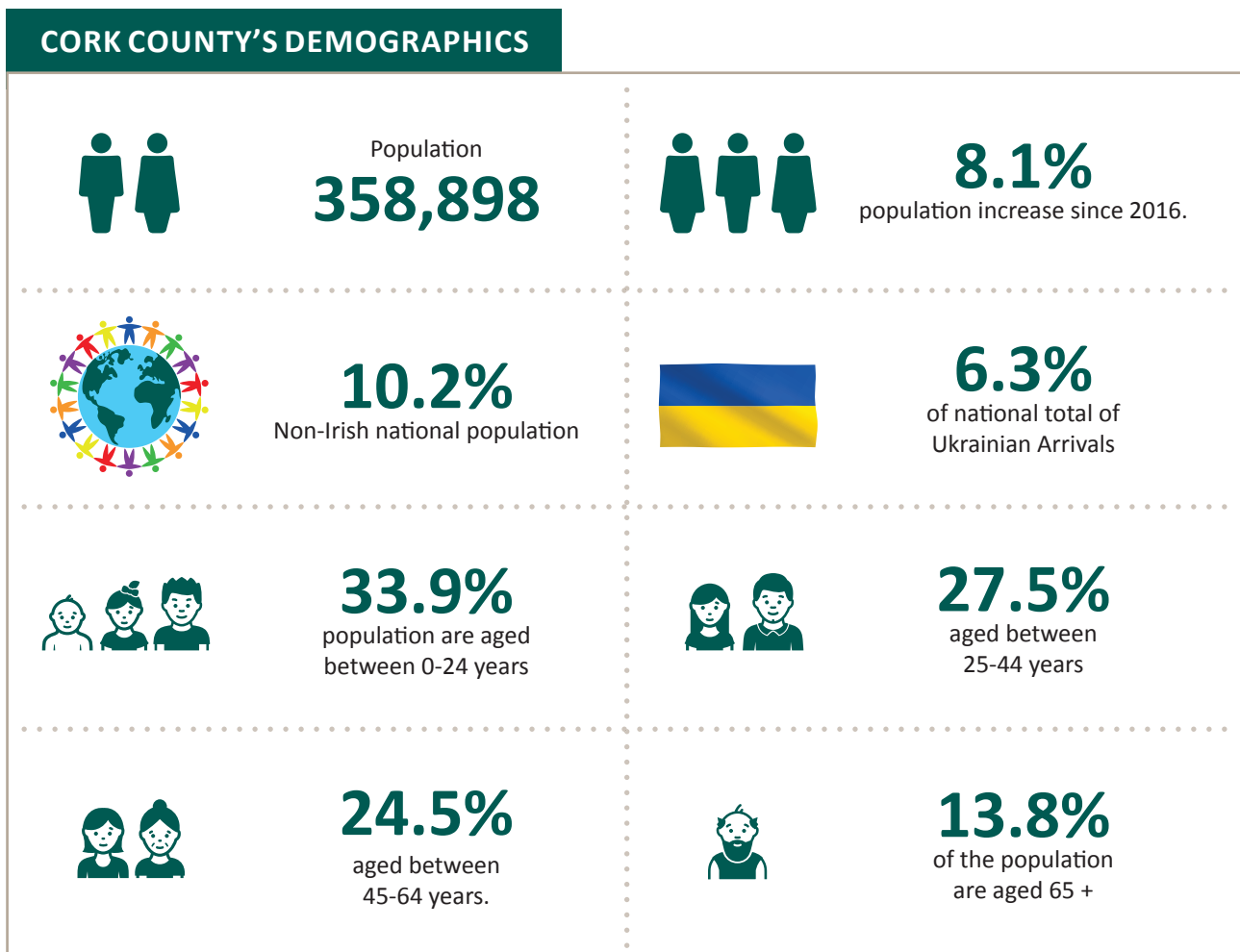
### Socio-Economic Data Sources

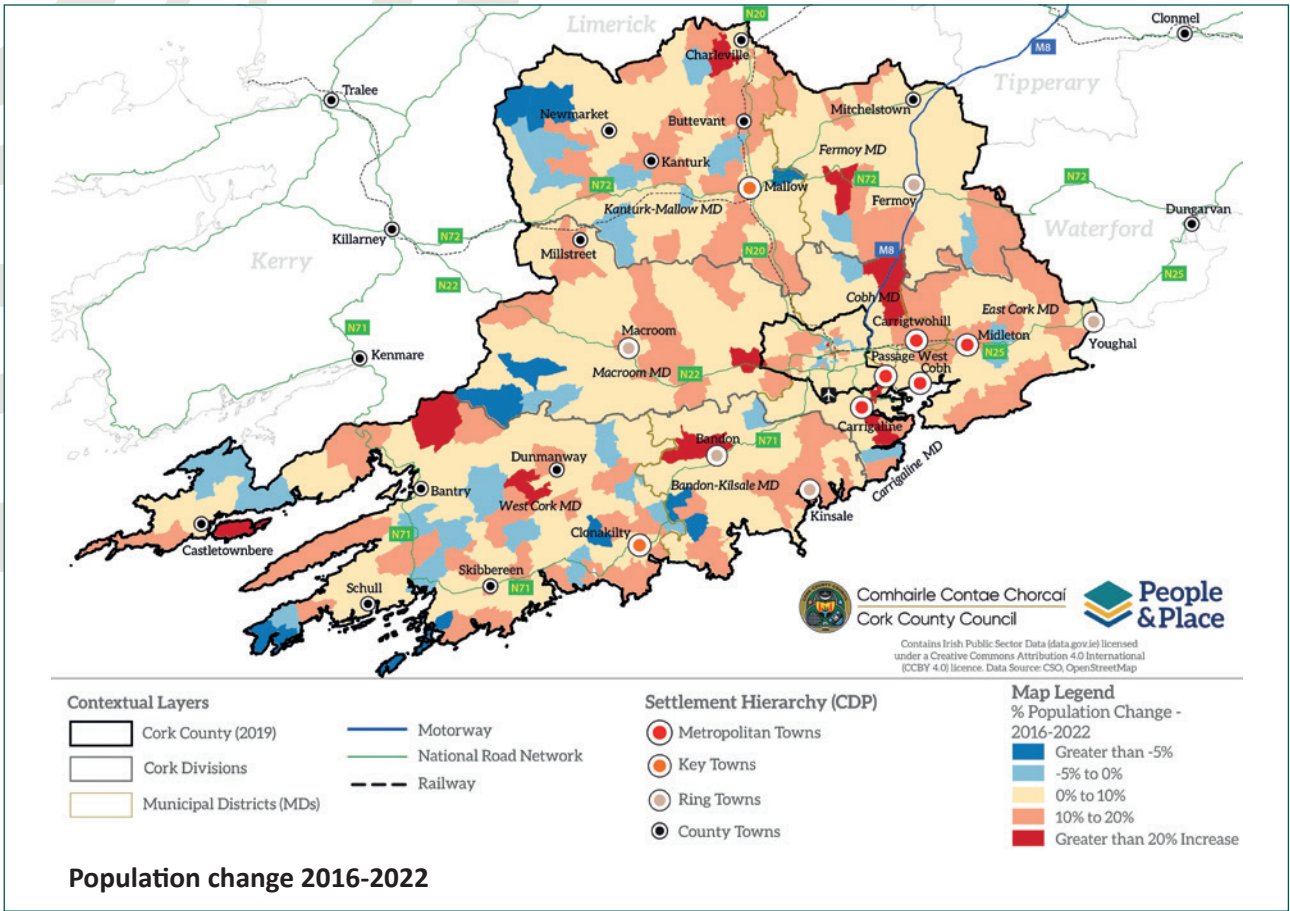
As part of Stage 1, Preparation of the LECP process, Cork County Council has created a socio-economic profile of Cork County, which has been used to inform this socio-economic statement and the corresponding High-Level Goals of this plan. This data is based on several verified sources, including the most recent preliminary results from the 2022 Census. Cork County Council will update these statistics to respond to new data, trends, and changes, where applicable. Key social and economic indicators of this profile have been presented in this document, with relevant data referenced within each of the High-Level Goals.

### Communities in County Cork

A community can include group of people who live in an area or share common interests, perspectives, goals or beliefs. Communities create a sense of connection, identity or social ties amongst their members. Cork County has vibrant and engaged communities, and this is demonstrated by the 525 community groups and organisations who form part of our Public Participation Network. Supporting our communities to be sustainable and vibrant places to live, work and do business is a key focus of the Cork County LECP, 2023-2029.

### KEY SOCIO-ECONOMIC HIGHLIGHTS

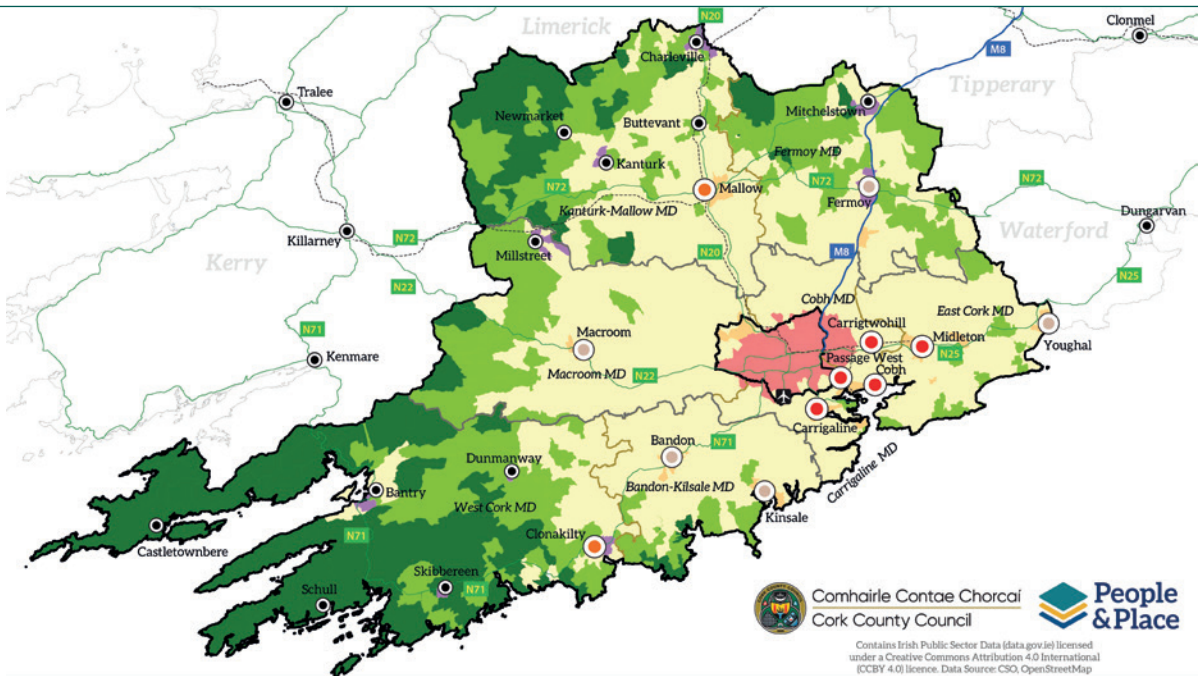
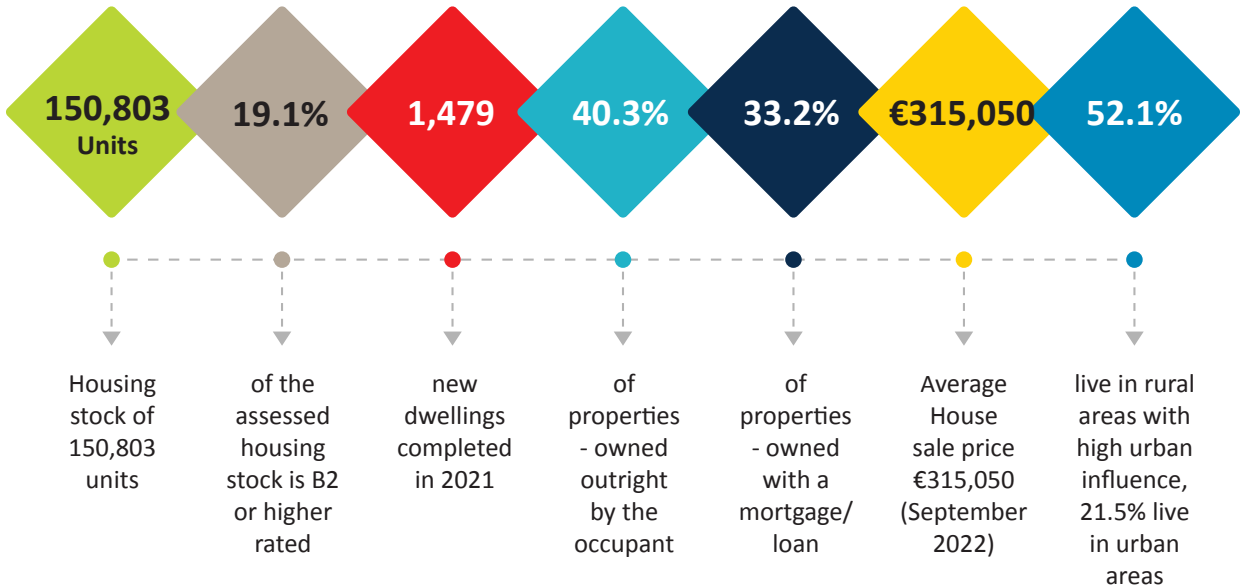








**CORK COUNTY'S HOUSING**



Contextual Layers

- Cork County (2019)
- Cork Divisions
- Municipal Districts (MDs)

- Motorway
- National Road Network
- Railway

Settlement Hierarchy (CDP)

- Metropolitan Towns
- Key Towns
- Ring Towns
- County Towns

Map Legend

- Urban Rural Classification
- Cities
- Satellite urban towns
- Independent urban towns
- Rural areas - high urban influence
- Rural areas - moderate urban influence
- Highly Rural/Remote areas

**Urban/Rural Classification**



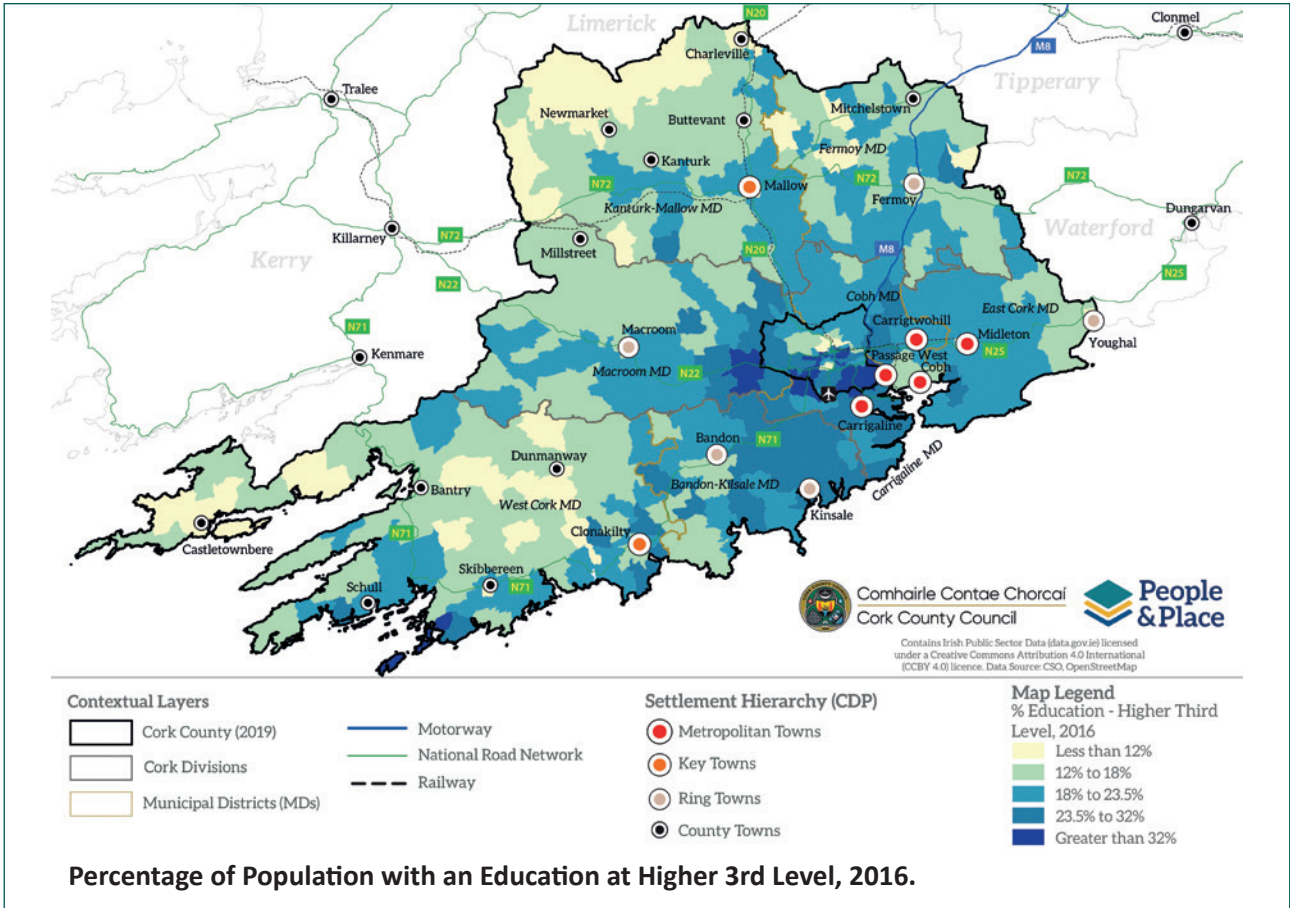
Comhairle Contae Chorcaí  
Cork County Council



Contains Irish Public Sector Data (data.gov.ie) licensed under a Creative Commons Attribution 4.0 International (CCBY 4.0) licence. Data Source: CSO, OpenStreetMap



**CORK COUNTY'S EDUCATION**





### CORK COUNTY'S HEALTH



**12.9%**

of residents have a self-declared disability



**1.3%**

of residents have bad/very bad health



Levels of physical activity  
same as national averages



Lower levels of socio-economic  
deprivation than national averages



Youghal



**CORK COUNTY'S ECONOMY**



**More affluent than the State, as a whole**



Household Median Gross Income is **€49,489**, State average (€45,256)



Average disposable income, **€22,421**, 4th highest nationally



Known Job Locations (not mobile) **93,641**  
Cork County, 94,932 Cork City

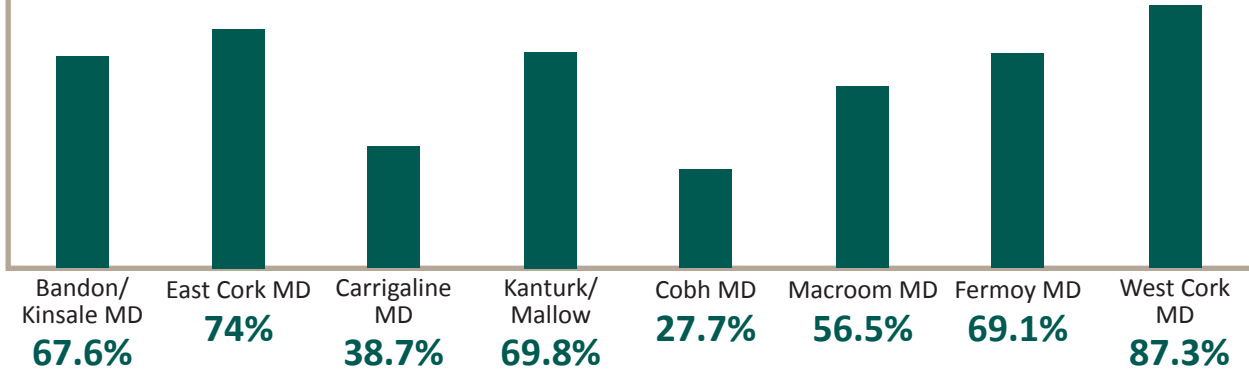


**22.8%** of local jobs in County Cork are in FDI supported companies



**90.4%** of the Cork County's labour force is in employment

Percentage of people who live AND work within each MD.



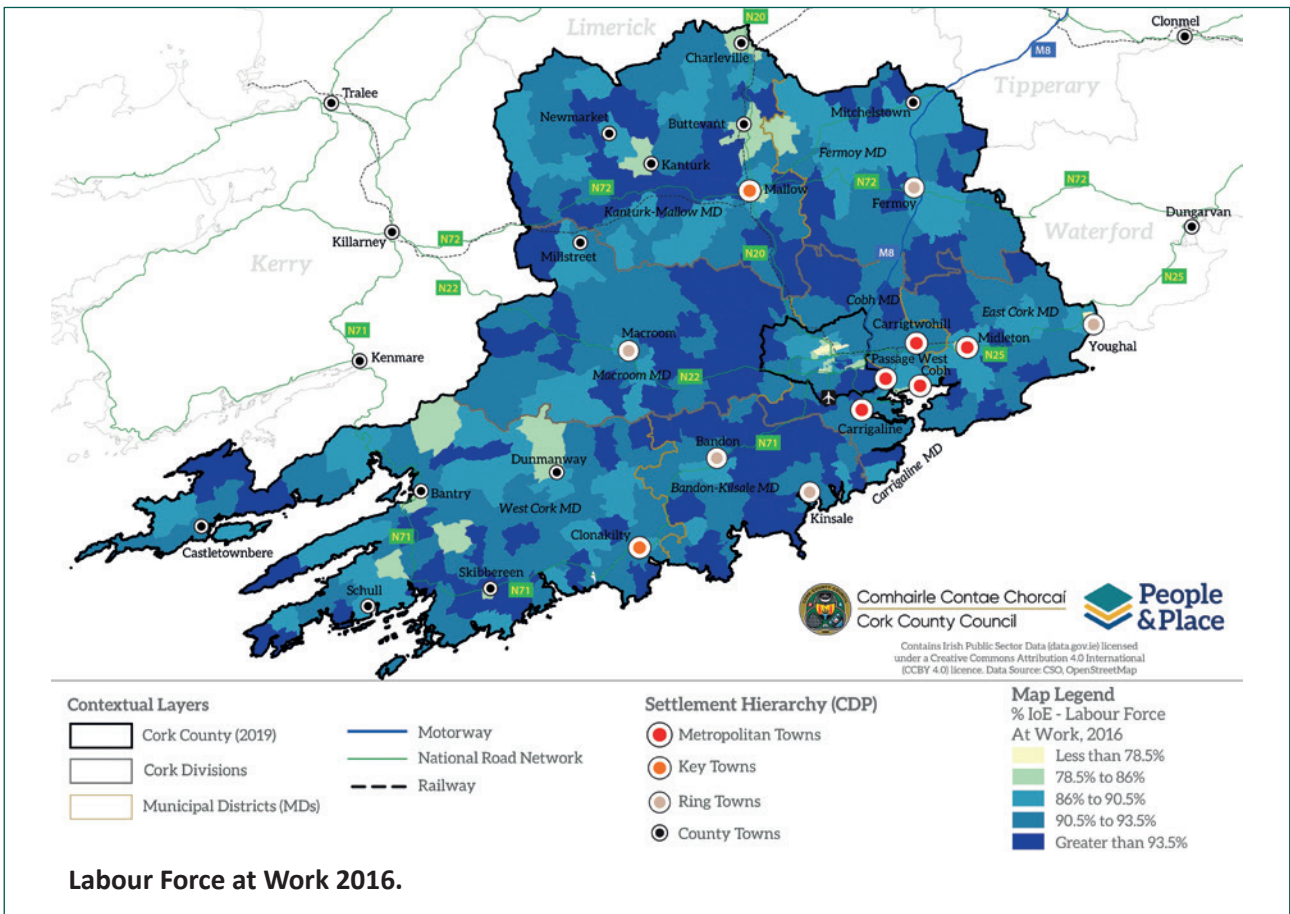
**150,016** people in the Cork County labour force

**Cork Harbour** has a fundamental role in the local and national economy, and connects Ireland to global trade routes and opportunities for further economic development. It is home to world leaders in Pharma, Biopharma, Chemical manufacturing and other global industries that have tapped into the strong skilled workforce of County Cork.



1,451,000 overseas tourists, 121,000 domestic/resident travellers visited Cork - 2019, spending **€842 million**

**Cork County has a relatively diverse employment profile**, with high participation across all sectors of employment. Sectors of employment have a distinct spatial profile, with greater employment in the primary sector (Agriculture, Fishing and Forestry) in North and West Cork.





### CORK COUNTY'S COMMUNITY



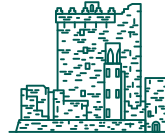
**382**  
Community Groups supported by Community grants since 2020



**525**  
local groups in our Public Participation Network



**30** Special Areas of Conservation (SACs),  
**7%** of national total



**3,000** protected structures,  
**50** Architectural Conservation Areas and **19,000** recorded archaeological monuments



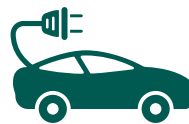
**108** outdoor gyms,  
**100** playgrounds, **48** parks,  
**20** multi-use games areas (MUGA) and **10** greenways.



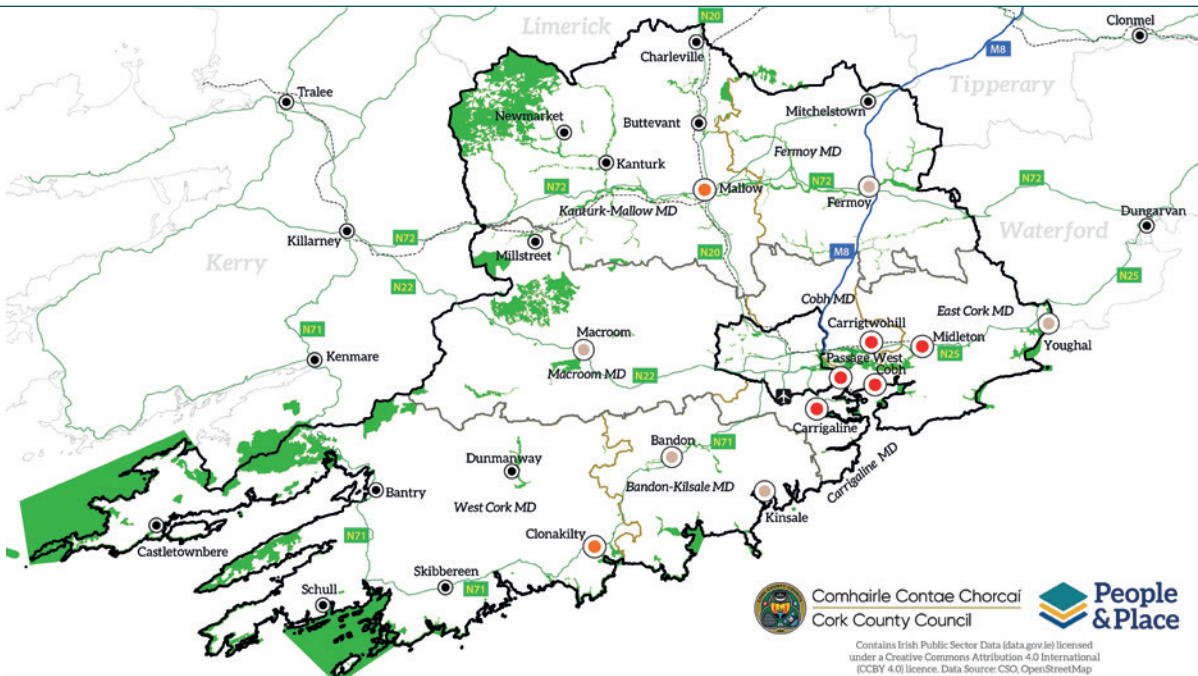
**Seven** inhabited islands in West Cork



**24** awards and medals in the 2022 Tidy Towns, including "Tidiest Town" and "Tidiest Small Town".



**34%**  
of new car registrations are electric or hybrid



Comhairle Contae Chorcaí  
Cork County Council



Contains Irish Public Sector Data (data.gov.ie) licensed under a Creative Commons Attribution 4.0 International (CCBY 4.0) licence. Data Source: CSO, OpenStreetMap

#### Contextual Layers

- Cork County (2019)
- Cork Divisions
- Municipal Districts (MDs)

- Motorway
- National Road Network
- Railway

#### Settlement Hierarchy (CDP)

- Metropolitan Towns
- Key Towns
- Ring Towns
- County Towns

#### Map Legend

- Natura 2000 Sites
- Natura 2000

#### Natura 2000 Sites



Comhairle Contae Chorcaí  
Cork County Council

# SCOT ANALYSIS









## SCOT ANALYSIS

Based on the findings of the socio-economic analysis of County Cork a SCOT analysis has been produced. This looks at the Strengths, Challenges, Opportunities and Threats to the County.

### STRENGTHS

- Strong demographic performance – especially in South Cork;
- Connectivity with the metropolitan zone;
- High levels of household income – especially in South Cork;
- High levels of labour force participation – throughout the county;
- Consistent growth in employment in state-assisted companies;
- Relatively resilient industrial (sectoral) profile;
- Economic spill-overs from Cork City and its role as a regional centre;
- Significant natural resources and habitats – including marine and coastal sites, many of which are integrated into local economic development and tourism services;
- Heritage, Culture and the Arts;
- Within three of Fáilte Ireland’s tourism experience brands, the Wild Atlantic Way, Ireland’s Ancient East and Ireland’s Hidden Heartlands;
- Strong community engagement;
- Cork Harbour’s role as an economic driver for the South of Ireland.

### CHALLENGES

- Persistent peripherality and structural weaknesses in North and West Cork, particularly in respect of demographic vitality, household income and economic opportunities;
- Inter-generational socio-economic disadvantages in both Local Authority Housing Estates and in peripheral rural communities;
- Poor health and social outcomes in disadvantaged communities;
- Meeting the housing, educational and medical needs of the refugee population;
- Relatively low proportion of schools with access to DEIS resources;
- Relatively low levels of progression from second-level to third-level education among young people in West Cork;
- High proportion of holiday homes in West Cork;



## OPPORTUNITIES

- Relatively high proportions of persons with technical, apprenticeship, certificate and third-level qualifications;
- Declining unemployment – opportunities to attract returning migrants and newcomers;
- Furthering upstream and downstream opportunities associated with the expansion of international and indigenous firms;
- Harnessing ecological resources, retro-fitting homes and deriving benefits from Natura 2000 sites (especially in North and West Cork), as part of the Just Transition to a post-carbon society;
- Further decreasing the amount of household waste going to landfill and further increasing the proportion of electric and hybrid vehicles.

## THREATS

- Demographic imbalances – strong growth in peri-urban zones and main commuter settlements, but stagnation and decline in peripheral rural areas, mainly in West and North West Cork;
- Reliance on traditional industries in some parts of North Cork;
- Projected ageing of the population;
- Increasing rents and property prices – putting pressure on disposable income;
- Recent (since 2019) slowdown in the rate of increase in new home-building;
- Strong demand for energy – particularly from industry;
- Ageing of the agricultural workforce;
- Decrease in the diversity of farm output and an increase in intensification, especially in dairying and cereal areas.





Comhairle Contae Chorcaí  
Cork County Council

## HIGH LEVEL GOALS





## HIGH LEVEL GOALS

### COMMUNITY

**HIGH LEVEL GOAL 1**  SUSTAINABLE, RESILIENT AND EMPOWERED COMMUNITIES

**HIGH LEVEL GOAL 2**  A SOCIALLY INCLUSIVE COUNTY

**HIGH LEVEL GOAL 3**  A HEALTHY AND ACTIVE COUNTY

### COMMUNITY AND ECONOMIC

**HIGH LEVEL GOAL 4**  A LOW CARBON AND CLIMATE RESILIENT COUNTY

### ECONOMIC

**HIGH LEVEL GOAL 5**  A COUNTY THAT SUPPORTS ENTERPRISE

**HIGH LEVEL GOAL 6**  A SMART AND INNOVATIVE COUNTY





Comhairle Contae Chorcaí  
Cork County Council

## **HIGH LEVEL GOAL 1**

**SUSTAINABLE,  
RESILIENT AND EMPOWERED  
COMMUNITIES**



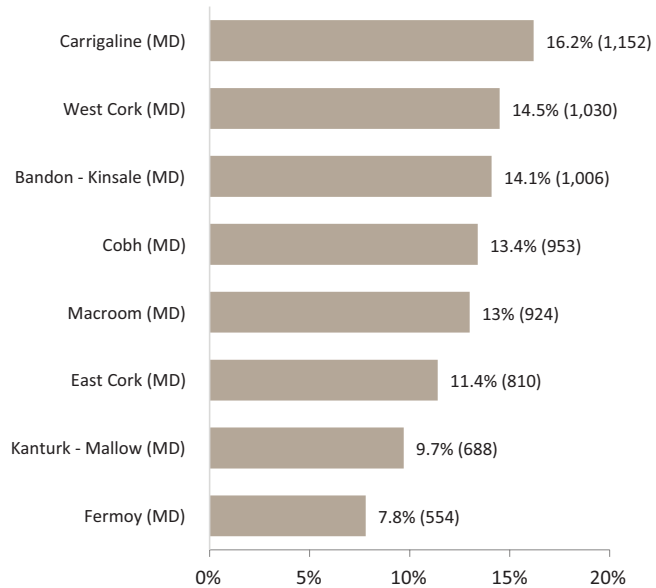
## HIGH LEVEL GOAL 1: SUSTAINABLE, RESILIENT AND EMPOWERED COMMUNITIES

A sustainable community is one that meets the needs of everyone in the community while protecting and limiting the damage to the environment. The first high level goal seeks to support the communities in Cork County to be sustainable, resilient and empowered communities. This reflects the vision of Cork County Development Plan which is to provide for the development of Cork County as an attractive, competitive and sustainable place to live, visit and do business, where the quality of its economy, natural and built environment, culture and the strength and viability of its rural and urban communities are to the highest standards.

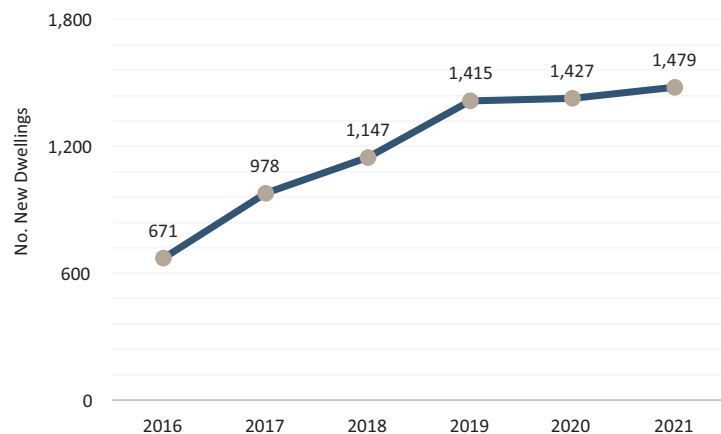
### WHAT OUR SOCIO-ECONOMIC ANALYSIS SHOWS US



#### HOUSING COMPLETIONS 2016-2022



#### HOUSING COMPLETIONS







**1,479**  
new dwellings completed in 2021



**8.5%**  
of the housing stock is vacant  
= State Average



**4.7%**  
of houses unoccupied holiday homes



**40.3%**  
owned outright by the occupant

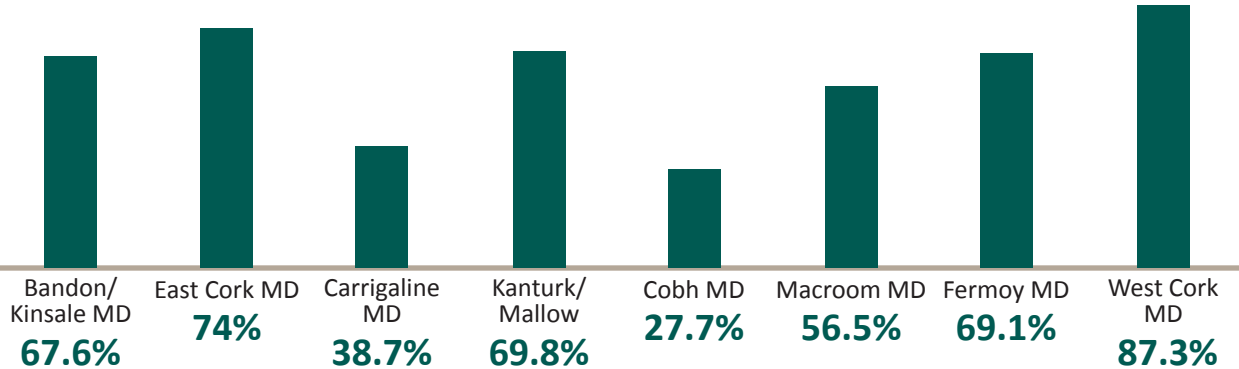


**33.2%**  
of properties - owned with a mortgage/loan



**24 awards and medals in the 2022 Tidy Towns, including "Tidiest Town" and "Tidiest Small Town".**

Percentage of people who live AND work within each MD.



County Cork has one of the lowest recorded crime offences rates per capita in the country.



Housing Vacancy is most prevalent in rural areas and not in areas of demand



1,451,000 overseas tourists, 121,000 domestic/resident travellers visited Cork - 2019, spending **€842 million**



Seven inhabited islands in West Cork



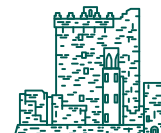
**108 outdoor gyms, 100 playgrounds, 48 parks, 20 multi-use games areas (MUGA) and 10 greenways.**



**382**  
Community Groups supported by Community grants since 2020



**525**  
local groups in our Public Participation Network



**3,000 protected structures, 50 Architectural Conservation Areas and 19,000 recorded archaeological monuments**



### POLICY CONTEXT

Ensuring the creation of attractive, liveable, well-designed, high-quality places that are home to diverse and integrated communities who enjoy a high quality of life and well-being is one of the key themes in the National Planning Framework.

As detailed above the vision of the Cork County Development Plan is to provide for the development of County Cork as an attractive, competitive and sustainable place to live, visit and do business, where the quality of its economy, natural and built environment, culture and the strength and viability of its rural and urban communities are to the highest standards.

### OBJECTIVES

The objectives in the LECP framework to support this high level goal may include:

- Facilitate the building of sustainable communities to encourage sustainable housing development.
- Promote and support placemaking to ensure the creation of liveable, well designed, high quality sustainable places and communities.
- Support initiatives and maximise potential opportunities for funding from various schemes to renew and regenerate our towns and villages.
- Support the delivery of sustainable and inclusive digital and multi-modal transport connectivity.
- Support initiatives and projects to increase availability, improve access and enhance existing sports, recreation and community facilities.
- Facilitate the delivery and promotion of active and sustainable travel infrastructure.
- Promote and support community safety and security initiatives.
- Encourage initiatives to enhance community integration, diversity and engagement.
- Promote and further develop Cork County as a vibrant tourism destination.
- Support community led groups who work to improve and enhance the towns, villages and communities in the county.
- Promote and support the Heritage, Culture and the Arts of the County.
- Support sustainable job creation within our communities.

### QUESTIONS

- How can your community work towards achieving this high level goal?
- Do you regularly use public transport, walking or cycling to complete your journeys for work? Do you regularly use public transport, walking or cycling to complete your journeys for leisure/non-work purposes? If not, what would encourage or help you to do so?
- Has your community group availed of available supports to improve your area or community?
- Which community and sports facilities in your community do you use most frequently?
- What initiatives might add value to the sporting facilities in your community?



Comhairle Contae Chorcaí  
Cork County Council

## HIGH LEVEL GOAL 2

### A SOCIALLY INCLUSIVE COUNTY



## HIGH LEVEL GOAL 2: A SOCIALLY INCLUSIVE COUNTY

The Roadmap for Social Inclusion 2020-2025 includes a new definition of social inclusion to clearly identify what is to be achieved:

“Social Inclusion is achieved when people have access to sufficient income, resources and services to enable them to play an active part in their communities and participate in activities that are considered the norm for people in society generally.” The County-level data of the Pobal HP Index of Affluence and Deprivation reveals that Cork County is more affluent than the State as a whole. The electoral level data shows that there are however areas which are marginally below average on the index with a small number of areas being classified as disadvantaged. This high level goal seeks to address this and work towards the achievement of social inclusion as defined above.





WHAT OUR SOCIO-ECONOMIC ANALYSIS SHOWS US



**2nd lowest unemployment rate in the State**



Household Median Gross Income is **€49,489**, State average (€45,256)



**Lower than State average levels of socio-economic deprivation**



**€315,050**  
Average House Sale Price



**€1,229**  
Average Rental Cost



**12.5%**  
of households supported by state pension



**11.1%**  
of households working age rely on social welfare for their main income



**26.5%**  
of disposable household income spent on rent (state 29%)



**€22,421**  
Disposable Income per person (4th highest in state)



**26.8%** of rental properties supported by HAP



**2nd highest level of supplement supported tenancies in the State**



**6.6%** of primary schools and **13.8%** of secondary schools receive DEIS support



**900**  
Irish Travellers



**8th Highest Average weekly childcare fees in state.**



**6.3%**

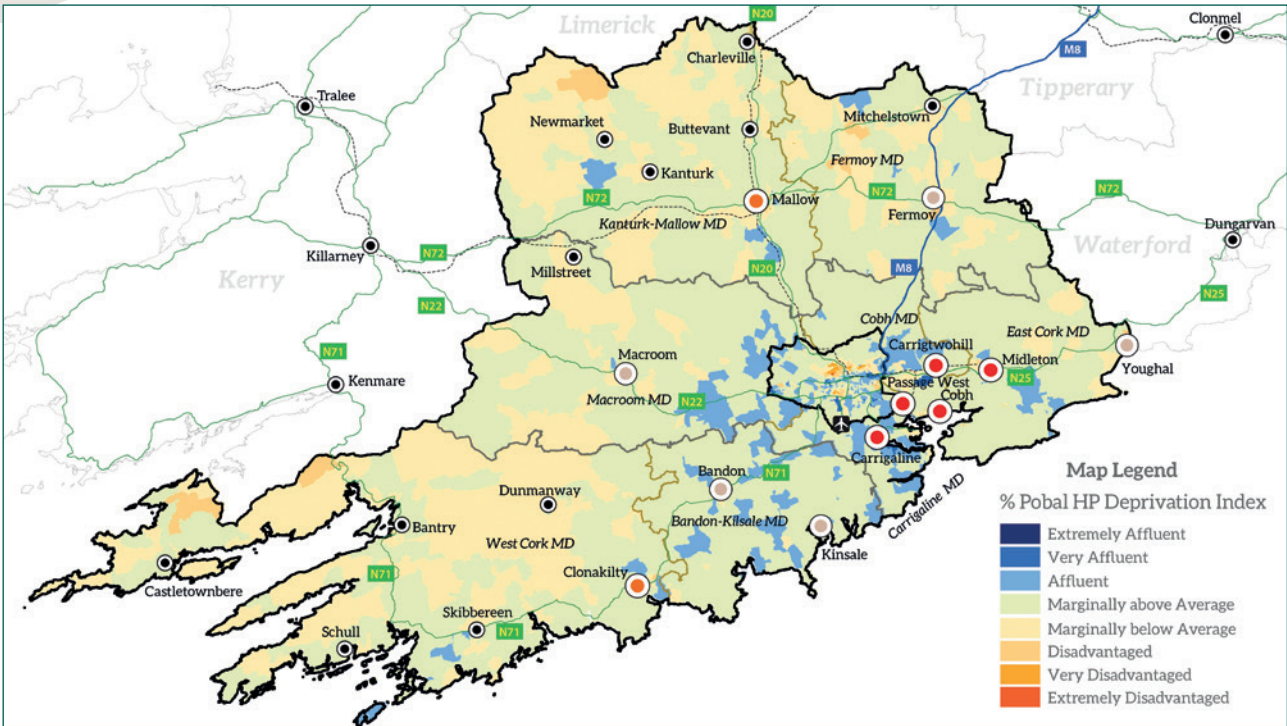
of national total of  
Ukrainian Arrivals



- Progression to University – 39.8% (County)  
Northern Division 32.8%, Southern 53.8%,  
Western 20.6%
- 39.4% Progress to TU/Other
- 20.9% Progress to other pathway (Probably  
best shown as a table or two)



**Pluri-activity and seasonal  
employment – significant  
in rural parts of Cork  
particularly West**



Map Legend

% Pobal HP Deprivation Index

- Extremely Affluent
- Very Affluent
- Affluent
- Marginally above Average
- Marginally below Average
- Disadvantaged
- Very Disadvantaged
- Extremely Disadvantaged

Contextual Layers

- Cork County (2019)
- Cork Divisions
- Municipal Districts (MDs)
- Motorway
- National Road Network
- Railway

Settlement Hierarchy (CDP)

- Metropolitan Towns
- Key Towns
- Ring Towns
- County Towns



Comhairle Contae Chorcaí  
Cork County Council



Contains Irish Public Sector Data (data.gov.ie) licensed  
under a Creative Commons Attribution 4.0 International  
(CCBY 4.0) licence. Data Source: CSO, OpenStreetMap

**Pobal HP Deprivation Index**



## POLICY CONTEXT

Ensuring the creation of attractive, liveable, well-designed, high-quality places that are home to diverse and integrated communities that enjoy a high quality of life and well-being is one of the key themes in the National Planning Framework. Our Communities: A Framework Policy for Local and Community Development in Ireland and Sustainable, Inclusive and Empowered Communities, which is a five-year strategy to support the community and voluntary sector in Ireland 2019-2024 highlights the importance for local authorities to create vibrant, inclusive, sustainable, self-determining communities that have the social, cultural, and economic well-being of all community members at their core. This is reflected in the vision and policies of the Cork County Development Plan and the RSES.

## OBJECTIVES

The objectives in the LECP the framework to support this high level goal may include:

- Promote and support equitable access to education, training and lifelong learning.
- Enable the provision of supports to help reduce barriers to employment and increase opportunities for the existing and recently arrived populations.
- Facilitate the delivery of focused programmes and supports to enhance inclusion and diversity and reduce isolation across our communities.
- Support citizens in accessing information on available supports.
- Promote actions that improve the quality of life for all citizens in Cork County to improve their mental, physical, and social well-being.
- Support the provision and enhancement of community-based services to address poverty and social exclusion.
- Support the provision of improved digital and multi-modal transport connectivity to aid social inclusion.
- Facilitate initiatives which support and enable people with disabilities to fully participate in education, employment and in their communities.
- Promote the embedding of accessibility and the principles of universal design into practice.
- Support the Council's Age Friendly Strategy.
- Support initiatives which seek to aid independent living for older people.

## QUESTIONS

- How can inclusion and diversity be enhanced within our communities?
- What initiatives in your opinion would help to develop attractive and inclusive communities?
- How can people be further supported to progress to further and third level education and training?
- Are there challenges in the provision of pre-school education?
- Do you experience any barriers in participating in lifelong learning or employment?







Comhairle Contae Chorcaí  
Cork County Council

## HIGH LEVEL GOAL 3

**A HEALTHY  
AND  
ACTIVE COUNTY**



## HIGH LEVEL GOAL 3: A HEALTHY AND ACTIVE COUNTY

Improving health and wellbeing throughout the country is a core focus of the *National Planning Framework* and is intrinsically linked to the UN sustainable development goals and objectives. County Cork is an active county with lower than average levels of residents who have self declared bad or very bad health. The Cork County LCDC Healthy Ireland Strategy 2021-2024 seeks to harness a culture of health and wellbeing in our community. This high level goal seeks to build on this and support the implementation of that strategy to aid the residents of County Cork to be healthy, well and active.

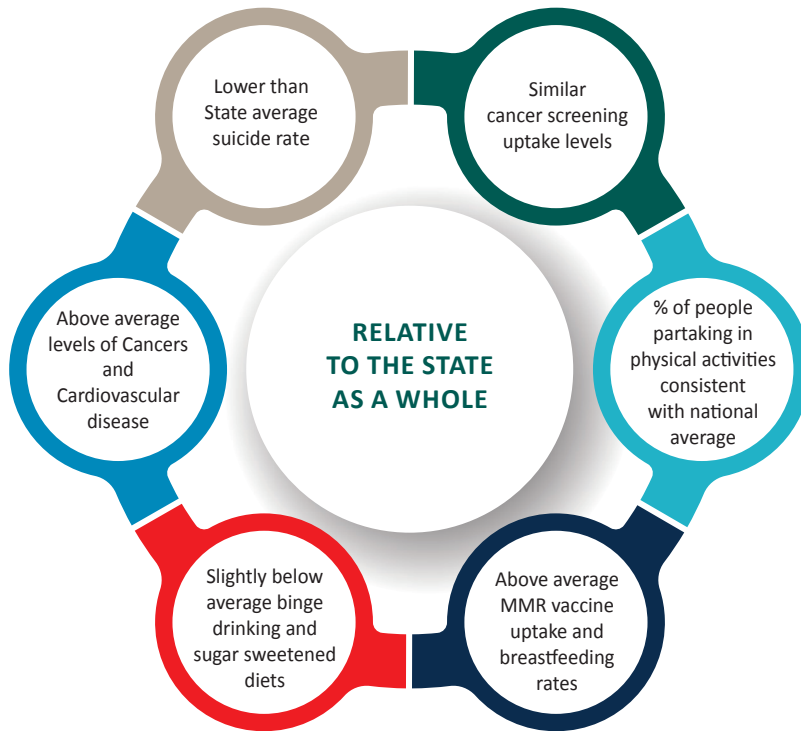
### WHAT OUR SOCIO-ECONOMIC ANALYSIS SHOWS US



**12.9%**  
of residents have a self-declared disability



**1.3%**  
of residents have bad/very bad health



Percentage of people with disability highest in areas with older age profile – North and West Cork



Cork performs well in respect of social determinates of health



Poor Health Outcomes are linked with Age and Socio Economic Deprivation



The population of the County is predicted to age over the next 20 years.



## POLICY CONTEXT

The Healthy Ireland Framework 2013-2025 sets out a national roadmap for improving health and wellbeing in the State, and seeks to deliver a healthy Ireland, where “everyone can enjoy physical and mental health and wellbeing to their full potential, where wellbeing is valued and supported at every level of society and is everyone’s responsibility. This framework underpins national and local policy in relation to health and wellbeing, and outlines four key high-level goals:

- To increase the proportion of people who are healthy at all stages of life
- To reduce health inequalities
- To protect the public from threats to health and wellbeing; and
- To create an environment where every individual and sector of society can play their part in achieving a healthy Ireland.

Implementation of the Healthy Ireland Framework is being supported by several strategic national action plans, which outline priority areas and specific actions to address the framework goals. Improving health and wellbeing throughout the country is also a core focus of the National Planning Framework and is intrinsically linked to the UN sustainable development goals and objectives.

There are also a significant number of additional health and wellbeing related policies that support the delivery of the Healthy Ireland framework, including the National Physical Activity Plan and the National Positive Ageing Strategy, as well as policies in relation to smoking, obesity, and alcohol and drug use.

The Cork County LCDC Healthy Ireland Strategy outlines the direction and objectives to enhance health and wellbeing in the county up to 2024.

## OBJECTIVES

The objectives in the LECP the framework to support this high level goal may include:

- Foster cross-agency collaboration and partnerships to continue to improve health and wellbeing and maximise funding opportunities.
- Support and promote increased participation in physical activity and sports for all ages and abilities.
- Support the implementation of health based initiatives at a local level to improve health and wellbeing.
- Support and promote participation in recreational activities to increase wellbeing and reduce isolation for all ages and abilities.
- Support initiatives that facilitate healthy and positive ageing in association with the Council’s age friendly strategy and policies.
- Support and promote increased awareness of, and engagement with, health and wellbeing initiatives.
- Support initiatives which seek to address health inequalities within the county.
- Support public transport initiatives which enhance connectivity for older and disabled people to enable them to live vibrant and healthy lives.

## QUESTIONS

- How can we facilitate healthy and positive ageing in Cork County? What does this mean to you?
- How can we promote and increase participation levels in physical activity and exercise?
- Do you experience any barriers to participating in sports or activities?





Comhairle Contae Chorcaí  
Cork County Council

## HIGH LEVEL GOAL 4

**A LOW CARBON  
AND CLIMATE  
RESILIENT COUNTY**



## HIGH LEVEL GOAL 4: A LOW CARBON AND CLIMATE RESILIENT COUNTY

The need to address the current climate crisis is one of the defining contexts to be addressed at all levels of government in Ireland. Project Ireland 2040 seeks to enable a national transition to a competitive low carbon, climate resilient and environmentally sustainable economy by 2050. This High Level Goal seeks to provide a framework through which climate action interventions can be delivered at a local level.

### WHAT OUR SOCIO-ECONOMIC ANALYSIS SHOWS US



**30** Special Areas of Conservation (SACs), 7% of national total



**18** Special Protection Areas  
18% of national total



**101** Areas of Geological Interest



**20** Planned Solar Farms – Largest in State



**41** windfarms – 2nd highest in State

**19.1%** Assessed Stock B2 or higher



**Cork County is:**

- 2nd highest generator of wind energy in the state
- 2nd Highest generator of solar energy in the state



**2nd Highest** Total Heat Demand in Country (GWh)



**17.5%** of domestic waste handled by Council Civic Amenity sites



**34%** New Car Registration are Electric or Hybrid



Sea Level in Cork Harbour has risen by 40cm since 1942



Average rainfall has increased by 3% (1981-2010) compared to 1961-1990 (baseline)



**0.5 degree Celsius** – Average temperature increase 1981-2010 (compared to baseline)



**4 of the hottest** summers have occurred in the last 10 years (Records began 1961)



### POLICY CONTEXT

Project Ireland 2040, states that future planning and development of our communities will be refocused at a local level to enable a national transition to a competitive low carbon, climate-resilient, and environmentally sustainable economy by 2050. The Southern Regional Spatial and Economic Strategy, identifies decarbonization, resources efficiency, and climate resilience as priority areas for action to address climate change in the region. Cork County Council's 2022 County Development Plan is in alignment with the Project Ireland Framework, in seeking to deliver compact, connected, sustainable growth in a more efficient and sustainable way.

Cork County Council is a signatory to the Climate Action Charter which sets out a common understanding in relation to climate change, acknowledges the need for a whole government approach to address climate change, and acknowledges specific local government supports. Furthermore, Cork County Council is the lead authority in a shared service guiding other Councils in the Atlantic Seaboard South Region (Climate Action Regional Office) as they plan for climate action, the mandate includes; driving climate action and building capacity in Local Governments, coordinating engagement across government departments and agencies, translate sectoral efforts at a local level and build on climate action experiences and expertise.

### OBJECTIVES

The objectives in the LECP the framework to support this high level goal may include:

- Promote and support community initiatives to address climate change, become climate resilient, transition to a low carbon economy and work towards achieving net zero carbon.
- Work towards the just transition through supporting opportunities for public and private investment in economic development that is both sustainable and inclusive.
- Facilitate key stakeholders to identify opportunities for decarbonisation and improved sustainable practices.
- Support and facilitate the continued development of opportunities for renewable energy generation and business growth in Cork County.
- Support initiatives to aid all sectors in transitioning to low carbon and sustainable practices.
- Implement and support projects and initiatives which protect biodiversity and support the principle of biodiversity net gain.
- Enable key stakeholders to identify opportunities to support the retrofitting of the existing housing, business, community and municipal buildings.
- Raise awareness of climate change and facilitate education and training.
- Support the continued development of sustainable communities in the County.
- Support the implementation of the Climate Action Plan.
- Collaborate strategically to maximise County Cork's potential for the development of renewable energy.

### QUESTIONS

- Has your community thought about how you can address climate change?







Comhairle Contae Chorcaí  
Cork County Council

## HIGH LEVEL GOAL 5

**A COUNTY THAT  
SUPPORTS ENTERPRISE**



## HIGH LEVEL GOAL 5: A COUNTY THAT SUPPORTS ENTERPRISE

Over the past 10 years, the number of active enterprises in Cork County has remained constant between 27,000 and 30,000 with the county being home to almost 11% of enterprises in Ireland. This high level goal seeks to build on the existing success in Cork and further develop the supportive landscape for enterprise and economic development in the County, particularly our indigenous and SME sector.

### WHAT OUR SOCIO-ECONOMIC ANALYSIS SHOWS US



#### Strong labour force participation



All municipal district areas have higher rates of employment than the national average.



Unemployment has decreased significantly since the previous LECP, 2016-2021



**150,016**

people in the Cork County labour force



**90.4%**

of the Cork County's labour force is in employment

#### Diverse employment profile

Cork County has a relatively diverse employment profile, with high participation across all sectors of employment. Sectors of employment have a distinct spatial profile, with greater employment in the primary sector in North and West Cork.



Known Job Locations (not mobile)

**93,641**

Cork County, 94,932 Cork City



16.2% employed in manufacturing industries



8.3% employed in agriculture, forestry and fishing



5.8% employed in the building and construction sector



21.3% employed in the commerce and trade sector



22.7% employed in professional services



4.6% employed in public administration



6.7% employed in the transport and communication sectors



Substantial FDI investment and support for Irish SMEs



22.8% of jobs in Cork County and City are in FDI supported companies



**2 LEO offices**  
support 459 Clients  
and 2,112 SME jobs



**92.4%**  
of Enterprises employ  
less than 10 employees.

## POLICY CONTEXT

National economic policy is underpinned by a number of key policy documents, including the Economic Recovery Plan 2021, Enterprise 2025 Renewed, Driving Recovery and Sustainable Growth, and Enterprise Ireland’s Leading in a changing world: Strategy 2022–2024. These critical national policies outline a high-level pathway for the continued growth and economic development of the State and recognise the significant and permanent structural changes that have emerged in the aftermath of the COVID-19 pandemic, including a rebalancing towards e-commerce and remote working. Economic policy is also deeply underpinned by the challenges presented by climate change, the EU Green Deal, and the ongoing transition to decarbonisation.

The high-level goals and objectives of these national policies are imagined at a regional level in both the Regional Spatial & Economic Strategy (RSES) for the Southern Region and the Regional Enterprise Plan to 2024: South-West. The overall vision of the RSES for the Southern Region is to:

- Achieve economic prosperity and improved quality of life for all our citizens
- Accommodate expanded growth and development in suitable locations; and
- Make the Southern Region one of Europe’s most creative, innovative, greenest and liveable regions

This vision is also reflected in the Regional Enterprise Plan for the South-West, which outlines a high-level objective of developing the South-West as “the most innovative and enterprise focused region in the country”. The Cork County Development Plan 2022-2028 is deeply embedded within the context of these key national and regional economic policies, with the principles of economic development and resilience central to the plan.



Ballycotton Lighthouse





## OBJECTIVES

The objectives of the framework to address this high level goal may include:

- Support the development and enhancement of entrepreneurship, business start-ups and SMEs to embed further resilience in our enterprise landscape and encourage diversification.
- Enhance opportunities for indigenous companies to expand, grow and diversify their workforce.
- Promote and support innovative and sustainable economic growth and the transition to a low carbon economy.
- Support SME's to exploit the supply chains of MNEs to facilitate growth in the indigenous sector.
- Collaborate with key stakeholders and employers to support and promote increased opportunities for apprenticeships and further education training courses for both existing employees and those seeking to enter the workforce.
- Facilitate an increased awareness of the available supports and resources for job seekers and employers.
- Promote placemaking and develop projects in key employment centres that ensure the creation of attractive, enterprise development friendly, liveable, well designed, high quality places that are home to a diverse enterprise base mix and integrated communities that enjoy a high quality of life and wellbeing.
- Facilitate further opportunities for FDI investment and balanced economic development.
- Support the development of enterprises in high-growth potential sectors, including the Marine, Circular Bioeconomy, Tourism and Energy sectors.
- Support the growth of co-working hubs, smart working and facilitate 2nd site locations for FDI.
- Ensure the sustainable growth of the rural economy by promoting and supporting jobs in farming and agri-food industries and exploit our competitive edge in this sector.
- Work with international, national, regional and local partners to promote Cork and facilitate exports, trade and sharing best practice.
- Support the development of the industrial and commercial infrastructure of County Cork.
- Facilitate the building of capacity to enable effective responses to emerging challenges and risks to the economy.
- Build Strategic Partnerships to ensure Cork is an easy place to do business in.

## QUESTIONS

- How can the transition to a low carbon economy across our economic sectors and enterprises be supported?
- How can we further support entrepreneurship and innovation in our County?
- What are the biggest challenges facing our local indigenous businesses?
- How can we facilitate growth for our significant multinational sector?





Comhairle Contae Chorcaí  
Cork County Council

## HIGH LEVEL GOAL 6

A SMART AND  
INNOVATIVE COUNTY



## HIGH LEVEL GOAL 6: A SMART AND INNOVATIVE COUNTY

SMART specialisation is an enterprise innovation policy concept which was developed by the European Commission that aims to boost regional innovation, contributing to growth and prosperity by helping and enabling regions to focus on their strengths. This high level goal seeks to build on the existing innovative landscape within the county to increase capacity within our economy and aid in the creation of vibrant, sustainable and liveable communities.

### WHAT OUR SOCIO-ECONOMIC ANALYSIS SHOWS US

#### Prominent existing research and innovation centres



**7 out of top 10**  
Pharmaceutical Companies  
have operations in Cork



Cork has  
**2 of the Country's**  
leading universities



**33,000**  
3rd Level Students  
in MTU and UCC



**Strong record**  
of skilled graduates

#### Educated workforce with diverse skillsets



Cork County has established clusters in key sectors such as Life Sciences, Technology and Agri-food, with growing clusters in International Financial Services (IFS) and Marine/Energy



Strong clusters in key economic drivers of Cork County, such as Little Island and Ringaskiddy.

#### Educated workforce with diverse skillsets



**32.3%**  
of the population  
have third-level  
qualification



**17.8%**  
of population  
has Technical/  
Apprenticeship/  
Certificate



**18.6%**  
of population have  
higher secondary  
education





## POLICY CONTEXT

Directly following on from the high level national and regional economic policies outlined in the previous High Level Goal. Smart Specialisation has emerged as a key area of national significance and focus, with the recent publication of the National Smart Specialisation Strategy for Innovation 2022-2027 defining Smart Specialisation as a “bottom-up, place-based, dynamic process which brings together regional and national actors to identify opportunities and shape future policy direction”. The strategy aims to achieve impact across five national priority areas:

- Digitalisation and digital transformation
- Green transformation for enterprise
- Innovation diffusion
- International collaboration on Research, Development and Innovation (RD&I); and
- Improving the national or regional enterprise research and innovation system.

At a regional level, the Southern Regional Assembly has outlined an ambition to become a SMART region, which focuses on people and place rather than technology and seeks collaborations across all sectors to harness digital and data to create vibrant, sustainable and liveable communities. Supporting the goals and objectives of the national Smart Specialisation Strategy are key policies and strategies in relation to Digitalisation and Clustering, which recognise the variety of stakeholders and factors involved in achieving a SMART region, and enhancing innovation, economic development and placemaking. Clustering, in particular, has been cited as a key objective in both the Cork County Development Plan 2022-2028 and the Regional Enterprise Plan to 2024: South-West, and focuses on “creating linkages between organisations and stimulating collective action with the aim of enhancing the enterprise environment for mutual benefit of members”. Underpinning these innovation policies is the need to ensure an educated and skilled workforce capable of meeting the demands of a modern economy, and addressing the skillsets required for both existing and future enterprise.



Roches Point





## OBJECTIVES

The objectives of the framework to address this high level goal may include:

- Collaborate with key stakeholders to identify the competitive advantages of Cork County to develop new economic opportunities.
- Support the development of economic opportunities identified through smart specialisation.
- Strengthen existing research, innovation and industry clusters, innovation ecosystems and support the development of new clusters to enhance innovation and competitiveness.
- Support, promote and continue to invest in our Harbour Economy.
- Aid the digital transformation of enterprises and facilitate investment and development of the required supporting infrastructure.
- Engage proactively with third-level institutions, education and training providers, the South West Regional Skills forum, research centres and employers to address identified skills shortages in existing and future economic growth sectors and develop the County's human capital.
- Support, promote and continue to invest in the lifelong learning of Cork County's highly educated population to attract further investment and enhance economic growth.

## QUESTIONS

- Can you identify new economic opportunities in your area which would capitalise on your regions economic USPs?
- How can we support clustering to deliver enhanced research and innovation?
- How can we use our highly educated population and knowledge base to support and promote the economy of Cork County and promote our competitive edge?
- As an employer, what are the skills/training that are needed to meet the future needs of your enterprise? What skills/training is currently in short supply?



Comhairle Contae Chorcaí  
Cork County Council