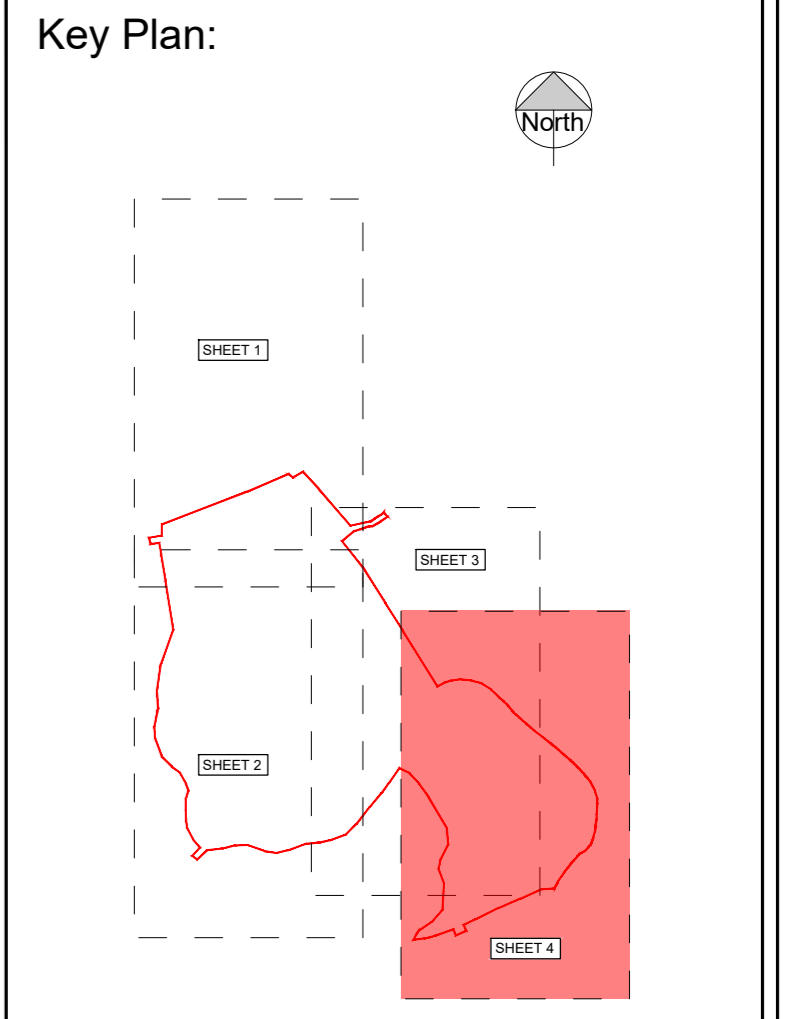


- Notes:**
1. All drawings are to be read in conjunction with all relevant Specifications, Bills of Quantities, Architectural, Services and Engineering drawings.
 2. Any discrepancies between these documents shall be brought to the attention of the Engineer.
 3. All dimensions are in millimetres unless noted otherwise.
 4. All levels are in metres related Ordnance Datum Malin Head.
 5. CoOrdinates related to ITM.
 6. Drawings are not to be scaled.



Legend:

- Site Boundary
- Overhead ESB Lines

REFERENCE DRAWINGS:

DRAWING No.	DRAWING TITLE
21573-MWP-ZZ-ZZ-DR-C-2101	EXISTING TOPOGRAPHICAL PLAN
21573-MWP-ZZ-ZZ-DR-C-2102	EXISTING TOPOGRAPHICAL LAYOUT SHEET 1 OF 4
21573-MWP-ZZ-ZZ-DR-C-2103	EXISTING TOPOGRAPHICAL LAYOUT SHEET 2 OF 4
21573-MWP-ZZ-ZZ-DR-C-2104	EXISTING TOPOGRAPHICAL LAYOUT SHEET 3 OF 4

REV	DATE	DESCRIPTION	BY	APP
P02	28.08.23	ISSUED FOR PLANNING	CRH	POD
P01	31.08.22	ISSUED FOR INFORMATION	BC	POD

PROJECT: WATER ROCK LINEAR PARK

TITLE: EXISTING TOPOGRAPHICAL LAYOUT SHEET 4 OF 4

CLIENT: CORK COUNTY COUNCIL

MWP
ENGINEERING AND ENVIRONMENTAL CONSULTANTS
CORK | TRALEE | LONDON | LIMERICK
mwp.ie

DRAWN: Bc	CHECKED: MK	APPROVED: P'OD
PROJECT NUMBER: 21573	DATE: 26/08/2022	SCALE @ A1: As shown
STATUS DESCRIPTION: FOR INFORMATION		STATUS: S2
DRAWING NUMBER: 21573 - MWP - ZZ - ZZ - DR - C - 2105	REV: P02	

EXISTING TOPOGRAPHICAL LAYOUT
Scale 1:500