

**Habitats Directive Appropriate Assessment  
Screening Determination**

**Development of Carpark at Ballard Forest, Kilworth, Co. Cork**



**Cork County Council**  
Comhairle Contae Chorcaí

**Completed by: Kieran Murphy, Ecology Unit, Planning Department**  
**Date: November 2023**

This document contains the Habitats Directive Screening Determination of Cork County Council in respect of the development of a carpark at Ballard Forest, Kilworth. The determination is based on information provided in the Part 8 Report prepared by Cork County Council and the Screening for Appropriate Assessment Report which has been prepared by Ciaran Ryan for Cork County Council. This screening determination should be read in conjunction with these reports.

|  |  |
|--|--|
| <p><b>Name of the project</b><br/>Development of Carpark at Ballard Forest, Kilworth, Co. Cork</p>   |  |
| <p><b>Description of the project</b><br/>Cork County Council in partnership with Coillte and Avondhu Blackwater Partnership propose to develop an off road car park to cater for recreational users of the Ballard Forest, the entrance is via an existing forest road exit/entrance and the car park is to cater for 18 car spaces.</p> <p><i>Site works will include:</i></p> <ul style="list-style-type: none"> <li>• The development of hardcore public car park.</li> <li>• The existing ground shall be levelled, and topsoil used to create new perimeter boundary. The new surface and base of the car park shall be 150mm CL804 material on 100mm of 50mm stone. Drainage will naturally percolate via the new surface water.</li> <li>• The creation of a vehicular entrance/exit on to the exiting forestry road.</li> <li>• New hardcore footpath link to Forest Recreation Area.</li> <li>• Erection of 1.2m high timber post and 3 rail fencing about the perimeter of the proposed car park</li> <li>• Landscaping of site boundaries with native hedging and trees</li> <li>• Drainage works within the car park, including a French drain and soak pit.</li> <li>• Erection of a height barrier</li> <li>• Erection of signage &amp; map board</li> </ul> |  |
| <p><b>Name and location of EU sites subject to screening</b><br/>The entrance to the proposed site is located along the L1419, in the townland of Ballard, approximately 6.3km northeast of Kilworth (as the crow flies). The exiting site use is forestry. The proposed car park area, adjacent to the public road consists of dense vegetation and sapling trees in the ownership of Coillte. The surrounding area is forestry, under the ownership and control of Coillte. The entrance and access route to the proposed carpark is forestry road, with the main site currently comprised of commercial conifer forestry.</p> <p>The site is located approximately 250m from the West Lyreen, which enters the Ballard Stream over 600m downstream. The Ballard forms part of the Blackwater River (Cork/Waterford) Special Area of Conservation (site code: 2170) approximately 680m from the proposed development. It designated for 18 qualify interests.</p> <p>The Blackwater River SAC is a large riverine SAC which is designated for the protection of 18 qualifying interest habitats and species.</p> <p>The Qualifying Interests are:</p>  |  |
| <b>Qualifying Interests</b>  | <b>Conservation Objectives</b>   |
| <ul style="list-style-type: none"> <li>• Estuaries [1130]</li> <li>• Mudflats and sandflats not covered by seawater at low tide [1140]</li> </ul>  | To maintain the favourable conservation condition of the following habitats and species: |

- Perennial vegetation of stony banks [1220]
- Salicornia and other annuals colonising mud and sand [1310]
- Atlantic salt meadows (*Glauco-Puccinellietalia maritima*) [1330]
- Mediterranean salt meadows (*Juncetalia maritimi*) [1410]
- Water courses of plain to montane levels with the *Ranunculus fluitantis* and *Callitriche-Batrachion* vegetation [3260]
- Old sessile oak woods with *Ilex* and *Blechnum* in the British Isles [91A0]
- Alluvial forests with *Alnus glutinosa* and *Fraxinus excelsior* (*Alno-Padion*, *Alnion incanae*, *Salicion albae*) [91E0]
- *Margaritifera margaritifera* (Freshwater Pearl Mussel) [1029]
- *Austropotamobius pallipes* (White-clawed Crayfish) [1092]
- *Petromyzon marinus* (Sea Lamprey) [1095]
- *Lampetra planeri* (Brook Lamprey) [1096]
- *Lampetra fluviatilis* (River Lamprey) [1099]
- *Alosa fallax fallax* (Twaiite Shad) [1103]
- *Salmo salar* (Salmon) [1106]
- *Lutra lutra* (Otter) [1355]
- *Trichomanes speciosum* (Killarney Fern) [1421]

- Estuaries [1130]
- Mudflats and sandflats not covered by seawater at low tide [1140]
- Perennial vegetation of stony banks [1220]
- Salicornia and other annuals colonising mud and sand [1310]
- Mediterranean salt meadows (*Juncetalia maritimi*) [1410]
- Water courses of plain to montane levels with the *Ranunculus fluitantis* and *Callitriche-Batrachion* vegetation [3260]
- *Austropotamobius pallipes* (White-clawed Crayfish) [1092]
- *Lampetra planeri* (Brook Lamprey) [1096]
- *Lampetra fluviatilis* (River Lamprey) [1099]
- *Salmo salar* (Salmon) [1106]
- *Trichomanes speciosum* (Killarney Fern) [1421]

and to restore the favourable conservation condition of the following habitats and species:

- Atlantic salt meadows (*Glauco-Puccinellietalia maritima*) [1330]
- Old sessile oak woods with *Ilex* and *Blechnum* in the British Isles [91A0]
- Alluvial forests with *Alnus glutinosa* and *Fraxinus excelsior* (*Alno-Padion*, *Alnion incanae*, *Salicion albae*) [91E0]
- *Margaritifera margaritifera* (Freshwater Pearl Mussel) [1029]
- *Petromyzon marinus* (Sea Lamprey) [1095]
- *Alosa fallax fallax* (Twaiite Shad) [1103]
- *Lutra lutra* (Otter) [1355]

The status of *Taxus baccata* woods of the British Isles as a qualifying Annex I habitat for the Blackwater River (Cork/Waterford) SAC is currently under review.

NPWS Conservation Objectives Version 1.0, Date: July 2012

Figure 1 Location of proposed development relative to the Blackwater River SAC

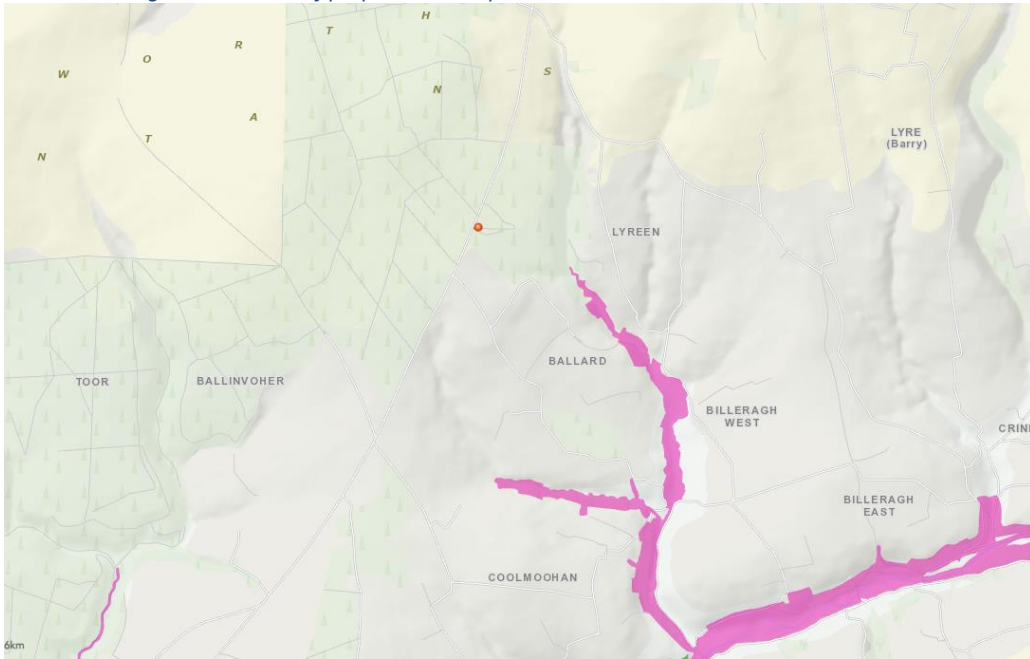


Figure 2 Location of proposed site relative to Kilworth

