

NOTES

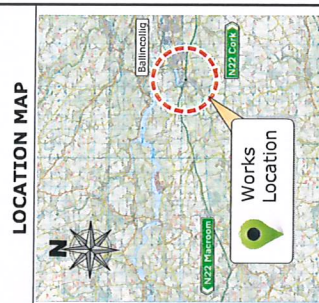
- All dimensions in metres unless otherwise stated.
- Dimensions not to be scaled from drawing. Any queries to be referred to the Designer, Mr. John J. O'Connell, County Library Building, Carrigrohane Road, Co. Cork.
- The information shown on this plan is a general guide and the accuracy thereof cannot be guaranteed. No liability is accepted for any discrepancy, omission or error. Any excavation or other work must be carried out and plant must be established on site before any mechanical excavation is undertaken.

LEGEND

- Existing carriageway
- Existing footpath
- Existing green area
- Proposed kerbline
- Proposed footpath
- Proposed tactile paving (yellow) as per drawing DWG No. 10
- Existing gully
- Proposed gully
- Proposed public lighting column

Proposed road tabulars curbs with red surfacing and with M112 white lining as per DTAS Traffic Signs Manual 2019 Chapter 7

**** WARNING ****
 The design shown on this drawing is based solely on information available to the Designer. It is the responsibility of the client to ensure that the design is based on accurate and complete information. A topographical survey is required to progress to a preliminary design.



CORK COUNTY COUNCIL
 Regional & Local Design Office
 Floor 3
 Carrigrohane Road, Co. Cork, T12 Q315.

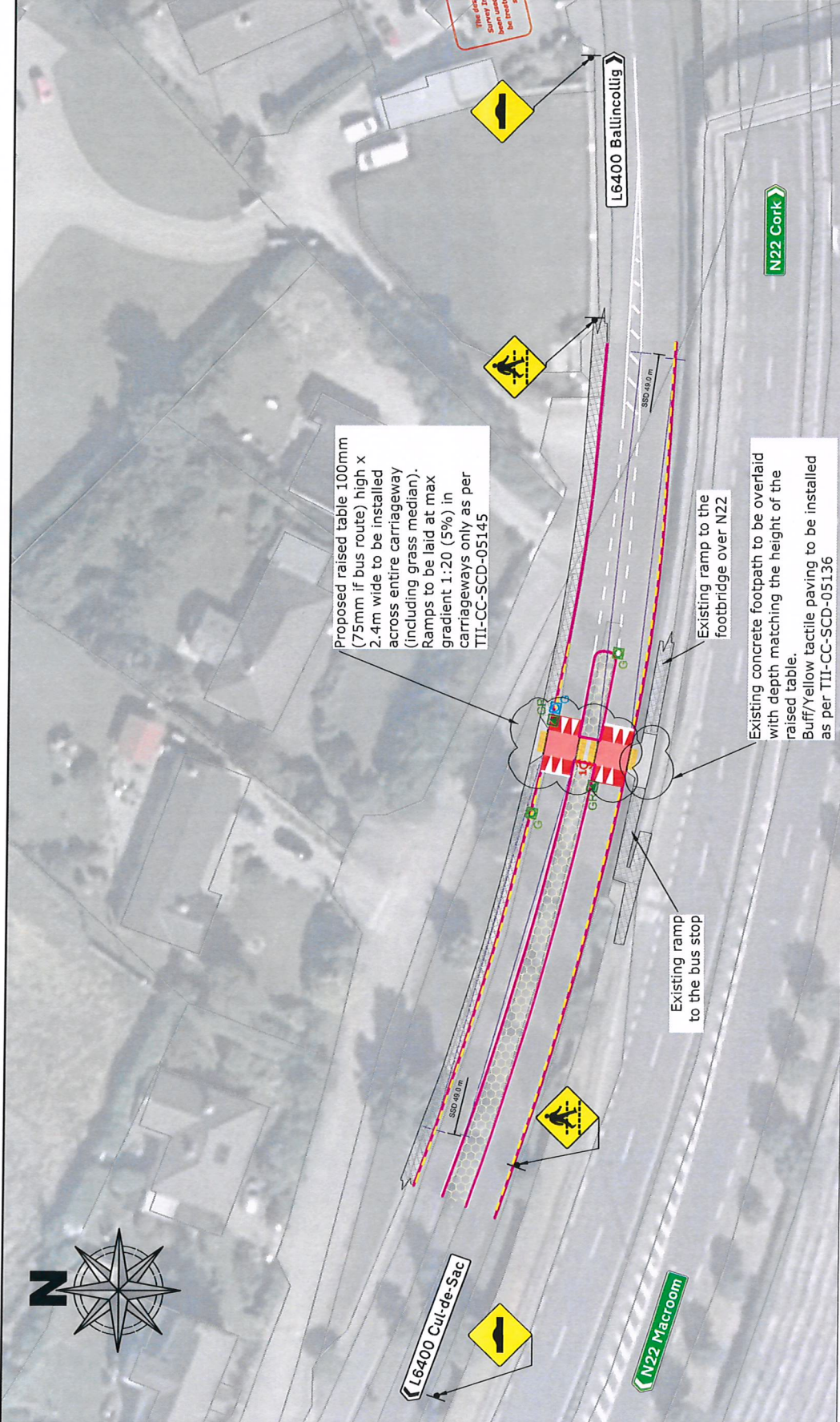
L6400 Bannagore Pedestrian Crossing

Proposed Raised Table Pedestrian Crossing

28 August 2023

Section 3B

L6400-LA-01 | D0



SECTION 1: SIDEWALK WITH TACTILE PAVING

SECTION 2: RAMP TO FOOTBRIDGE

SECTION 3: RAMP TO BUS STOP

SECTION 4: CROSS SECTION OF RAISED TABLE

SECTION 5: CROSS SECTION OF RAISED TABLE WITH TACTILE PAVING

SECTION 6: CROSS SECTION OF RAISED TABLE WITH TACTILE PAVING AND CURB

SECTION 7: CROSS SECTION OF RAISED TABLE WITH TACTILE PAVING AND CURB (ALTERNATIVE)

SECTION 8: CROSS SECTION OF RAISED TABLE WITH TACTILE PAVING AND CURB (ALTERNATIVE)

SECTION 9: CROSS SECTION OF RAISED TABLE WITH TACTILE PAVING AND CURB (ALTERNATIVE)

SECTION 10: CROSS SECTION OF RAISED TABLE WITH TACTILE PAVING AND CURB (ALTERNATIVE)

SECTION 11: CROSS SECTION OF RAISED TABLE WITH TACTILE PAVING AND CURB (ALTERNATIVE)

SECTION 12: CROSS SECTION OF RAISED TABLE WITH TACTILE PAVING AND CURB (ALTERNATIVE)

SECTION 13: CROSS SECTION OF RAISED TABLE WITH TACTILE PAVING AND CURB (ALTERNATIVE)

SECTION 14: CROSS SECTION OF RAISED TABLE WITH TACTILE PAVING AND CURB (ALTERNATIVE)

SECTION 15: CROSS SECTION OF RAISED TABLE WITH TACTILE PAVING AND CURB (ALTERNATIVE)

SECTION 16: CROSS SECTION OF RAISED TABLE WITH TACTILE PAVING AND CURB (ALTERNATIVE)

SECTION 17: CROSS SECTION OF RAISED TABLE WITH TACTILE PAVING AND CURB (ALTERNATIVE)

SECTION 18: CROSS SECTION OF RAISED TABLE WITH TACTILE PAVING AND CURB (ALTERNATIVE)

SECTION 19: CROSS SECTION OF RAISED TABLE WITH TACTILE PAVING AND CURB (ALTERNATIVE)

SECTION 20: CROSS SECTION OF RAISED TABLE WITH TACTILE PAVING AND CURB (ALTERNATIVE)

SECTION 21: CROSS SECTION OF RAISED TABLE WITH TACTILE PAVING AND CURB (ALTERNATIVE)

SECTION 22: CROSS SECTION OF RAISED TABLE WITH TACTILE PAVING AND CURB (ALTERNATIVE)

SECTION 23: CROSS SECTION OF RAISED TABLE WITH TACTILE PAVING AND CURB (ALTERNATIVE)

SECTION 24: CROSS SECTION OF RAISED TABLE WITH TACTILE PAVING AND CURB (ALTERNATIVE)

SECTION 25: CROSS SECTION OF RAISED TABLE WITH TACTILE PAVING AND CURB (ALTERNATIVE)

SECTION 26: CROSS SECTION OF RAISED TABLE WITH TACTILE PAVING AND CURB (ALTERNATIVE)

SECTION 27: CROSS SECTION OF RAISED TABLE WITH TACTILE PAVING AND CURB (ALTERNATIVE)

SECTION 28: CROSS SECTION OF RAISED TABLE WITH TACTILE PAVING AND CURB (ALTERNATIVE)

SECTION 29: CROSS SECTION OF RAISED TABLE WITH TACTILE PAVING AND CURB (ALTERNATIVE)

SECTION 30: CROSS SECTION OF RAISED TABLE WITH TACTILE PAVING AND CURB (ALTERNATIVE)

SECTION 31: CROSS SECTION OF RAISED TABLE WITH TACTILE PAVING AND CURB (ALTERNATIVE)

SECTION 32: CROSS SECTION OF RAISED TABLE WITH TACTILE PAVING AND CURB (ALTERNATIVE)

SECTION 33: CROSS SECTION OF RAISED TABLE WITH TACTILE PAVING AND CURB (ALTERNATIVE)

SECTION 34: CROSS SECTION OF RAISED TABLE WITH TACTILE PAVING AND CURB (ALTERNATIVE)

SECTION 35: CROSS SECTION OF RAISED TABLE WITH TACTILE PAVING AND CURB (ALTERNATIVE)

SECTION 36: CROSS SECTION OF RAISED TABLE WITH TACTILE PAVING AND CURB (ALTERNATIVE)

SECTION 37: CROSS SECTION OF RAISED TABLE WITH TACTILE PAVING AND CURB (ALTERNATIVE)

SECTION 38: CROSS SECTION OF RAISED TABLE WITH TACTILE PAVING AND CURB (ALTERNATIVE)

SECTION 39: CROSS SECTION OF RAISED TABLE WITH TACTILE PAVING AND CURB (ALTERNATIVE)

SECTION 40: CROSS SECTION OF RAISED TABLE WITH TACTILE PAVING AND CURB (ALTERNATIVE)

SECTION 41: CROSS SECTION OF RAISED TABLE WITH TACTILE PAVING AND CURB (ALTERNATIVE)

SECTION 42: CROSS SECTION OF RAISED TABLE WITH TACTILE PAVING AND CURB (ALTERNATIVE)

SECTION 43: CROSS SECTION OF RAISED TABLE WITH TACTILE PAVING AND CURB (ALTERNATIVE)

SECTION 44: CROSS SECTION OF RAISED TABLE WITH TACTILE PAVING AND CURB (ALTERNATIVE)

SECTION 45: CROSS SECTION OF RAISED TABLE WITH TACTILE PAVING AND CURB (ALTERNATIVE)

SECTION 46: CROSS SECTION OF RAISED TABLE WITH TACTILE PAVING AND CURB (ALTERNATIVE)

SECTION 47: CROSS SECTION OF RAISED TABLE WITH TACTILE PAVING AND CURB (ALTERNATIVE)

SECTION 48: CROSS SECTION OF RAISED TABLE WITH TACTILE PAVING AND CURB (ALTERNATIVE)

SECTION 49: CROSS SECTION OF RAISED TABLE WITH TACTILE PAVING AND CURB (ALTERNATIVE)

SECTION 50: CROSS SECTION OF RAISED TABLE WITH TACTILE PAVING AND CURB (ALTERNATIVE)

SECTION 51: CROSS SECTION OF RAISED TABLE WITH TACTILE PAVING AND CURB (ALTERNATIVE)

SECTION 52: CROSS SECTION OF RAISED TABLE WITH TACTILE PAVING AND CURB (ALTERNATIVE)

SECTION 53: CROSS SECTION OF RAISED TABLE WITH TACTILE PAVING AND CURB (ALTERNATIVE)

SECTION 54: CROSS SECTION OF RAISED TABLE WITH TACTILE PAVING AND CURB (ALTERNATIVE)

SECTION 55: CROSS SECTION OF RAISED TABLE WITH TACTILE PAVING AND CURB (ALTERNATIVE)

SECTION 56: CROSS SECTION OF RAISED TABLE WITH TACTILE PAVING AND CURB (ALTERNATIVE)

SECTION 57: CROSS SECTION OF RAISED TABLE WITH TACTILE PAVING AND CURB (ALTERNATIVE)

SECTION 58: CROSS SECTION OF RAISED TABLE WITH TACTILE PAVING AND CURB (ALTERNATIVE)

SECTION 59: CROSS SECTION OF RAISED TABLE WITH TACTILE PAVING AND CURB (ALTERNATIVE)

SECTION 60: CROSS SECTION OF RAISED TABLE WITH TACTILE PAVING AND CURB (ALTERNATIVE)

SECTION 61: CROSS SECTION OF RAISED TABLE WITH TACTILE PAVING AND CURB (ALTERNATIVE)

SECTION 62: CROSS SECTION OF RAISED TABLE WITH TACTILE PAVING AND CURB (ALTERNATIVE)

SECTION 63: CROSS SECTION OF RAISED TABLE WITH TACTILE PAVING AND CURB (ALTERNATIVE)

SECTION 64: CROSS SECTION OF RAISED TABLE WITH TACTILE PAVING AND CURB (ALTERNATIVE)

SECTION 65: CROSS SECTION OF RAISED TABLE WITH TACTILE PAVING AND CURB (ALTERNATIVE)

SECTION 66: CROSS SECTION OF RAISED TABLE WITH TACTILE PAVING AND CURB (ALTERNATIVE)

SECTION 67: CROSS SECTION OF RAISED TABLE WITH TACTILE PAVING AND CURB (ALTERNATIVE)

SECTION 68: CROSS SECTION OF RAISED TABLE WITH TACTILE PAVING AND CURB (ALTERNATIVE)

SECTION 69: CROSS SECTION OF RAISED TABLE WITH TACTILE PAVING AND CURB (ALTERNATIVE)

SECTION 70: CROSS SECTION OF RAISED TABLE WITH TACTILE PAVING AND CURB (ALTERNATIVE)

SECTION 71: CROSS SECTION OF RAISED TABLE WITH TACTILE PAVING AND CURB (ALTERNATIVE)

SECTION 72: CROSS SECTION OF RAISED TABLE WITH TACTILE PAVING AND CURB (ALTERNATIVE)

SECTION 73: CROSS SECTION OF RAISED TABLE WITH TACTILE PAVING AND CURB (ALTERNATIVE)

SECTION 74: CROSS SECTION OF RAISED TABLE WITH TACTILE PAVING AND CURB (ALTERNATIVE)

SECTION 75: CROSS SECTION OF RAISED TABLE WITH TACTILE PAVING AND CURB (ALTERNATIVE)

SECTION 76: CROSS SECTION OF RAISED TABLE WITH TACTILE PAVING AND CURB (ALTERNATIVE)

SECTION 77: CROSS SECTION OF RAISED TABLE WITH TACTILE PAVING AND CURB (ALTERNATIVE)

SECTION 78: CROSS SECTION OF RAISED TABLE WITH TACTILE PAVING AND CURB (ALTERNATIVE)

SECTION 79: CROSS SECTION OF RAISED TABLE WITH TACTILE PAVING AND CURB (ALTERNATIVE)

SECTION 80: CROSS SECTION OF RAISED TABLE WITH TACTILE PAVING AND CURB (ALTERNATIVE)

SECTION 81: CROSS SECTION OF RAISED TABLE WITH TACTILE PAVING AND CURB (ALTERNATIVE)

SECTION 82: CROSS SECTION OF RAISED TABLE WITH TACTILE PAVING AND CURB (ALTERNATIVE)

SECTION 83: CROSS SECTION OF RAISED TABLE WITH TACTILE PAVING AND CURB (ALTERNATIVE)

SECTION 84: CROSS SECTION OF RAISED TABLE WITH TACTILE PAVING AND CURB (ALTERNATIVE)

SECTION 85: CROSS SECTION OF RAISED TABLE WITH TACTILE PAVING AND CURB (ALTERNATIVE)

SECTION 86: CROSS SECTION OF RAISED TABLE WITH TACTILE PAVING AND CURB (ALTERNATIVE)

SECTION 87: CROSS SECTION OF RAISED TABLE WITH TACTILE PAVING AND CURB (ALTERNATIVE)

SECTION 88: CROSS SECTION OF RAISED TABLE WITH TACTILE PAVING AND CURB (ALTERNATIVE)

SECTION 89: CROSS SECTION OF RAISED TABLE WITH TACTILE PAVING AND CURB (ALTERNATIVE)

SECTION 90: CROSS SECTION OF RAISED TABLE WITH TACTILE PAVING AND CURB (ALTERNATIVE)

SECTION 91: CROSS SECTION OF RAISED TABLE WITH TACTILE PAVING AND CURB (ALTERNATIVE)

SECTION 92: CROSS SECTION OF RAISED TABLE WITH TACTILE PAVING AND CURB (ALTERNATIVE)

SECTION 93: CROSS SECTION OF RAISED TABLE WITH TACTILE PAVING AND CURB (ALTERNATIVE)

SECTION 94: CROSS SECTION OF RAISED TABLE WITH TACTILE PAVING AND CURB (ALTERNATIVE)

SECTION 95: CROSS SECTION OF RAISED TABLE WITH TACTILE PAVING AND CURB (ALTERNATIVE)

SECTION 96: CROSS SECTION OF RAISED TABLE WITH TACTILE PAVING AND CURB (ALTERNATIVE)

SECTION 97: CROSS SECTION OF RAISED TABLE WITH TACTILE PAVING AND CURB (ALTERNATIVE)

SECTION 98: CROSS SECTION OF RAISED TABLE WITH TACTILE PAVING AND CURB (ALTERNATIVE)

SECTION 99: CROSS SECTION OF RAISED TABLE WITH TACTILE PAVING AND CURB (ALTERNATIVE)

SECTION 100: CROSS SECTION OF RAISED TABLE WITH TACTILE PAVING AND CURB (ALTERNATIVE)