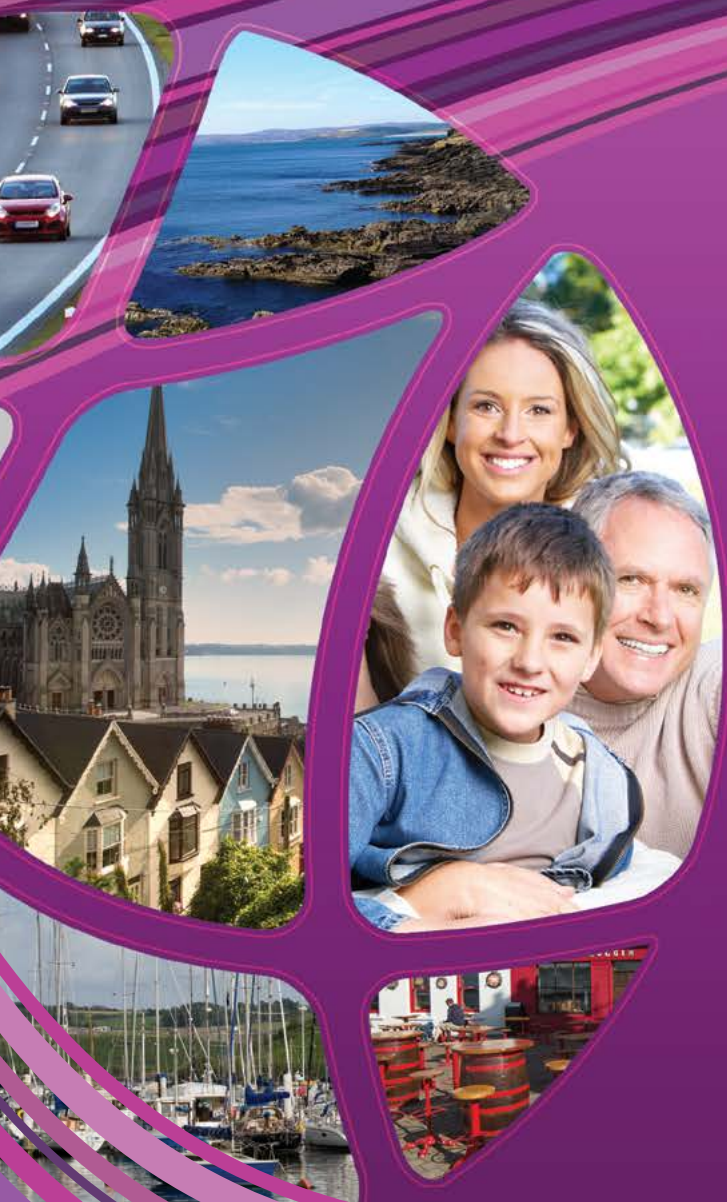


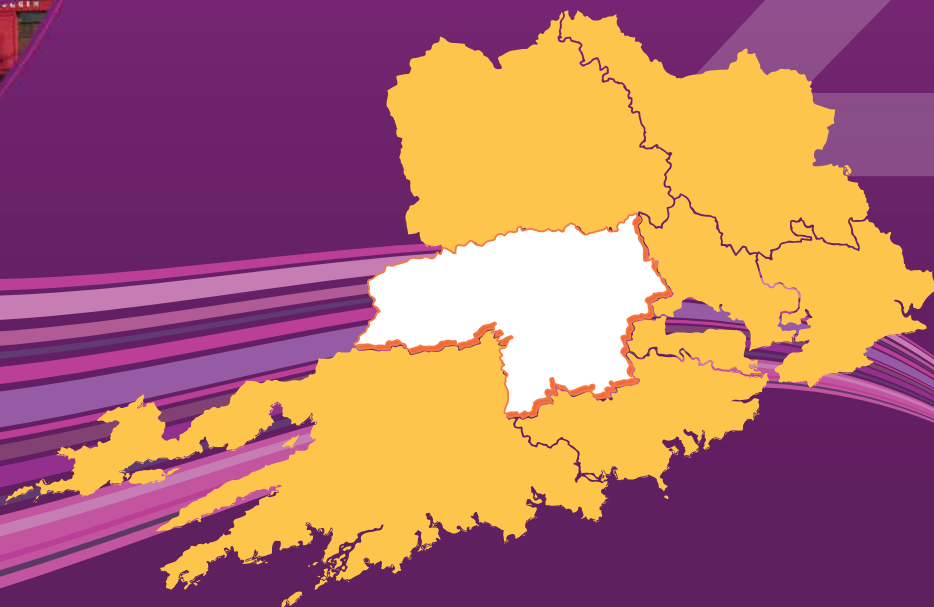


**Cork
County Council**
Comhairle Contae Chorcaí



Blarney Macroom Municipal District

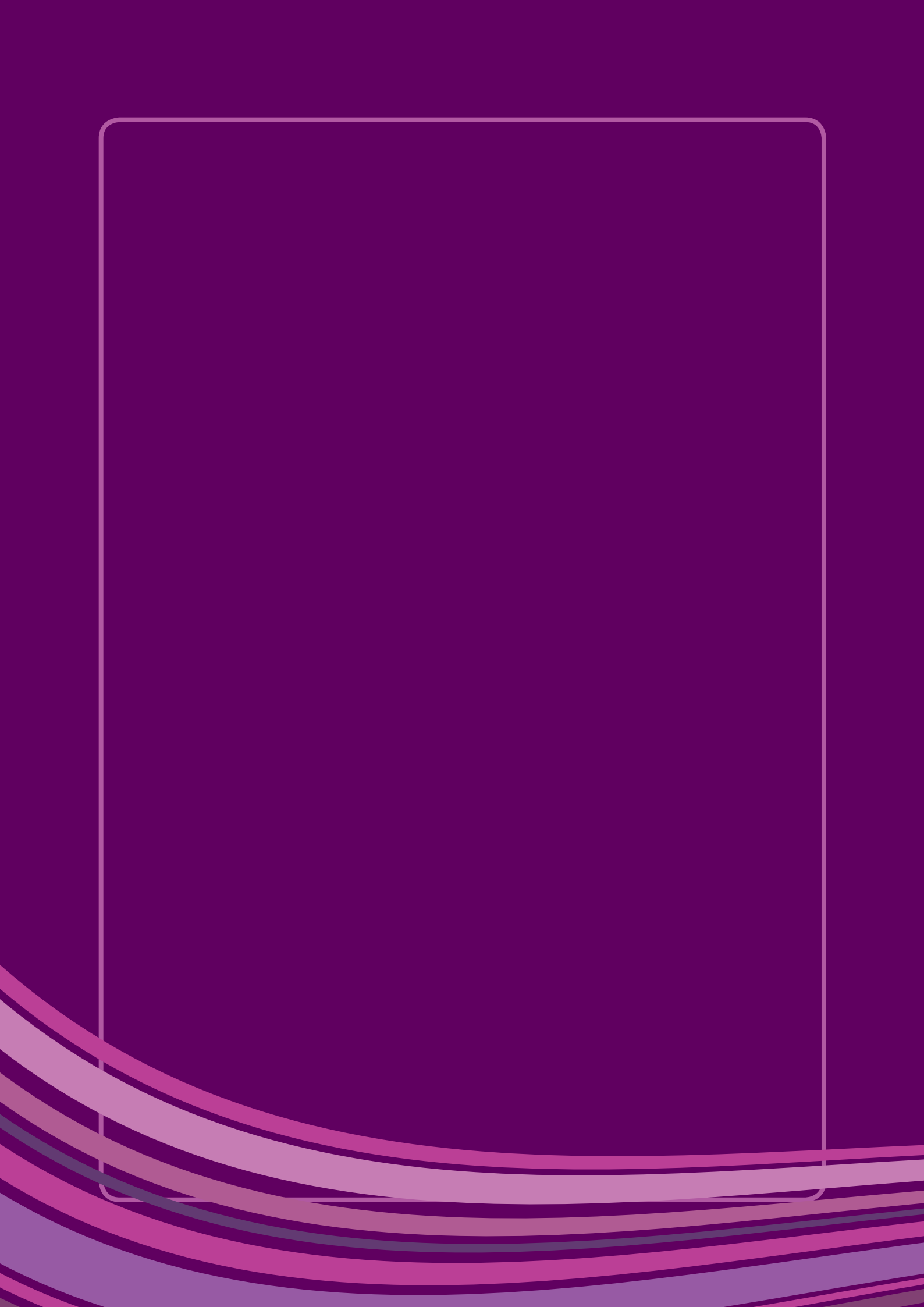
Local Area Plan



21st August 2017

VOLUME TWO
Environmental Reports

2





Environmental Reports

Table of Contents

	<i>Section</i>	<i>Page No.</i>
1.	Strategic Environmental Assessment Statement	5
2.	Habitats Directive Screening Report	63

Strategic Environmental Assessment Statement

Table of Contents

<i>Sub-Section</i>	<i>Page No.</i>
1. Introduction	6
Summary of the SEA Process	6
Content of the SEA Statement	7
2. How Environmental Considerations were Integrated into the Plan	8
Introduction	8
Environmental Report and Baseline Data Collection	8
Statutory Consultation	10
Alternatives Considered	10
Proposed Mitigation	11
Compliance with EU Habitats Directive – Appropriate Assessment	11
3. Submissions and Observations	16
Introduction	16
Pre Draft consultations	16
Draft Plan and Environmental Report Consultation	18
Proposed Amendments to the Draft Plan	25
4. Reasons for Choosing the Plan as Adopted	36
Introduction	36
Context for Considering Alternatives	36
Description of Alternatives	38
Assessment of Alternatives against the EPOs	44
Preferred Scenario	49
5. Monitoring	50
Scope of SEA Monitoring	50
Monitoring of the Local Area Plan	57
Appendix A	59

1 Introduction

1.1 Introduction

- 1.1.1 This is the SEA Statement for the Blarney Macroom Municipal District Local Area Plan, adopted on 24 July 2017. Strategic Environmental Assessment (SEA) is a process for evaluating, at the earliest appropriate stage, the likely environmental effects of implementing a Plan or other strategic action in order to ensure that environmental considerations are appropriately addressed in the decision-making process both during the preparation and prior to adoption of a Plan.
- 1.1.2 The European Directive (2001/42/EC) on the Assessment of the Effects of Certain Plans and Programmes on the Environment (the SEA Directive) was transposed into national legislation by the European Communities (Environmental Assessment of Certain Plans and Programmes) Regulations 2004 (S.I. 435/2004) and the Planning and Development (Strategic Environmental Assessment) Regulations 2004 (S.I. 436/2004). These regulations were subsequently amended by the European Communities (Environmental Assessment of Certain Plans and Programmes) (Amendment) Regulations, 2011(S.I. No. 200 of 2011) and the Planning and Development (Strategic Environmental Assessment) (Amendment) Regulations, 2011 (S.I. No. 201 of 2011).
- 1.1.3 The legislation requires that the Plan-making authority must make available an SEA Statement summarising how the SEA and consultations have been taken into account in the making of the Plan. This document comprises the SEA Statement.

1.2 Summary of the SEA process

- 1.2.1 The SEA Process is summarised in Table 1.1. below

Table 1.1 Summary of the SEA Process	
SEA Stage	Blarney Macroom Municipal District Local Area Plan
1 – Screening	Decision on whether or not an SEA of the Plan is required. There is a mandatory requirement under the Planning and Development (Strategic Environmental Assessment) Regulations, 2004 (as amended) to undertake a strategic environmental assessment in respect of Local Area Plans for areas with a population of 5,000 or more, so in this instance, screening was not required and the SEA process proceeded to the next stage.
2 – Scoping	Consultation with defined statutory bodies on the scope and level of detail to be considered in the Environmental Report. Scoping for the SEA for this Local Area Plan was commenced with the circulation of a Draft Scoping Report to all the environmental authorities on the 22nd April 2016. A total of two (2) submissions were received - from the EPA and Irish Water. The Scoping Report was finalised on the 31st May 2016 and issues raised were considered further during the preparation of the Draft Local Area Plan and the SEA Environmental Report.
3 – Environmental Assessment and	The next stage of the SEA process comprised an assessment of the likely significant impacts on the environment as a result of implementing the

Table 1.1 Summary of the SEA Process	
SEA Stage	Blarney Macroom Municipal District Local Area Plan
Environmental Report.	Local Area Plan and the preparation of the Environmental Report. The Environmental Report went out on public display with the Draft Local Area Plan on 16 th November 2016. Submissions received were considered and amendments were recommended by the Chief Executive. The amendments were screened for the requirement for further assessment under the SEA and AA processes. An Addendum to the Environmental Report was later published with the proposed amendments to the Draft Local Area Plan (in May 2017), reflecting issues raised in the submissions and the screening of the amendments. A further 20 submissions were received on foot of this third round of consultation and a minor non – material modification to the amendments were recommended by the Chief Executive. These modifications were again screened for SEA / AA prior to adoption of the final Plan.
4- SEA Statement	Preparation and publication of the SEA Statement identifying how environmental considerations and consultation have been integrated into the Final Plan. This document is the SEA Statement.

1.3 Content of the SEA Statement

- 1.3.1 The SEA Statement is described in Article 9 of the SEA Directive as a statutory requirement and should be made available with the adopted plan. This statement is required to be issued to the environmental authorities that were previously consulted, with a view to presenting a record of the key elements of the SEA process and illustrating how environmental considerations have been integrated into the plan and the key decisions taken in the plan as a consequence of the SEA.
- 1.3.2 The SEA Statement is required under Article 13I, SI No 436 of 2004 (as amended), to include information on:
- a) How environmental considerations have been integrated into the Plan;
 - b) How the Environmental Report, submissions and observations made to the planning authority on the Draft Plan and Environmental Report, and any transboundary consultations (where relevant) have been taken into account during the preparation of the Plan;
 - c) The reasons for choosing the Plan, as adopted, in the light of the other reasonable alternatives dealt with; and
 - d) The measures decided upon to monitor the significant environmental effects of implementation of the Plan.

2 How Environmental Considerations were Integrated into the Plan

2.1 Introduction

- 2.1.1 This section deals with how environmental considerations as presented in the Environmental Report were taken into account during the preparation of the Blarney Macroom Municipal District Local Area Plan.
- 2.1.2 The protection and conservation of the environment has been a key consideration throughout the preparation of the Plan. Environmental considerations were integrated into the plan in a number of ways through :
- a) Preparation of the Environmental Report including baseline data collection and evaluation of potential impacts.
 - b) Consultation
 - c) Consideration of alternatives
 - d) Mitigation measures
 - e) Compliance with the Habitats Directive – Appropriate Assessment.

2.2 Environmental Report and Baseline Data Collection

- 2.2.1 In order to assess the likely significant impacts of this Municipal District Local Area Plan, baseline data on the current state of the environment was collected and evaluated. This was done with reference to existing databases held by the Council and other organisations such as the EPA, National Parks and Wildlife Service (NPWS), South West River Basin District (SWRBD), Geological Survey of Ireland (GSI) etc. In many cases the maps and information were only available at a County Level. In accordance with legislation and guidance, the existing environment was described with respect to biodiversity, population, human health, fauna, flora, soil, water, air, climatic factors, material assets, cultural heritage (including architectural and archaeological heritage), landscape and the interrelationships between these factors as appropriate. Collection and analysis of this information has allowed the identification of key resources and sensitivities and allowed for the identification of potential threats to the environment, thus allowing for the inclusion of mitigation measures to ensure that the Plan does not exacerbate existing problems.
- 2.2.2 As the data was compiled and plan policies evolved, the likely significant effects of implementing the plan were identified, described and evaluated, as appropriate. This process formed a core element of the Environmental Report. The potential effects of the plan were then considered using a system of Environmental Protection Objectives, Targets and Indicators which were formulated having regard to the issues emerging from the baseline assessment and internal consultation with other departments within the Council. The assessment of the baseline environment also enabled those preparing the plan to consider how the environment might evolve in the absence of the proposed plan.
- 2.2.3 Section 6.2 of the Environmental Report details the evaluation of the potential effects on the environment of implementing the provisions of the Draft Plan and notes that the Draft Plan has been prepared by undertaking a review of the existing Local Area Plan for the area, which was itself subject to Strategic Environmental Assessment, Habitats Directive Assessment, and Flood Risk Assessment, prior to adoption. The reality is that many of the provisions of the current local area plan have been carried forward, unchanged, into the new Draft Plan 2016, and there are therefore few issues arising that need to be assessed 'de novo'.

- 2.2.4 Furthermore, the County Development Plan 2014 includes many protective objectives in relation to issues such as Development Management and Protection of Amenities, Sustainable Residential Development, Natural, Built and Cultural Heritage, Biodiversity, Landscape, Water Quality, Pollution Control, protecting Air Quality, managing Noise and Light emissions, flood risk management, sustainable energy etc. All proposals for development under the Local Area Plan, must comply in the first instance, with all the provisions of the County Development Plan.
- 2.2.5 All of the objectives of the Draft Local Area Plan were assessed for possible impacts within the context of these existing mitigation measures. As these mitigation measures negate or mitigate any significant negative impacts that could otherwise have been expected, the Environmental Report on the Blarney Macroom Municipal District Draft Plan made no recommended changes.
- 2.2.6 Due to the late availability of the updated flood risk mapping, this issue came to light late in the process, and it was therefore decided to publish the Draft Plan without giving effect to the Recommendation of the Environmental Report, and to address it at the amendments stage.

Submissions on the Draft Plan and Environmental Report

- 2.2.7 One hundred and nine submissions were received during the public consultation period on the Draft Blarney Macroom Municipal District Local Area Plan and Environmental Report. Thirty-two of the submissions focused on general issues facing the County and the Municipal District as a whole, with a further seventy seven site specific submissions. Submissions from the EPA and the Southern Regional Assembly referenced the Environmental Report in their submissions.
- 2.2.8 Having considered these submissions, and the recommendations of the environmental report, further amendments to the Draft Plan, and the preparation of an Addendum to the Environmental Report, were recommended by the Chief Executive in his report to Members in March 2017. An addendum to the Environmental Report was prepared and published with the Proposed Amendments to the Plan in May 2017. The Addendum recommends some minor changes to the Environmental Report in response to issues raised in the submissions, and also included a screening report of the proposed amendments.

Submissions on Proposed Amendments to the Draft Plan and Addendum to the SEA Environment Report

- 2.2.9 A total of 20 submissions were received on the Proposed Amendments to the Draft Plan. Details of all the submissions received were detailed in the Chief Executive's Report to Members in June 2017. Only one submission, from the Environmental Protection Agency, referenced the Addendum to the SEA Environment Report. Having considered the submissions received in response to the publication of the amendments proposed for the Draft Blarney Macroom Municipal District Local Area Plan, no further modifications to the published amendments were recommended by the Chief Executive
- 2.2.10 There was a minor modification in response to the submission from TII, where it is proposed to insert some additional non material text into Section One of each plan under the heading of 'Traffic and Transport' as follows:
- 2.2.11 *'The Council, in consultation with the Transport Infrastructure Ireland, will protect proposed national road route corridors where the route selection process has been completed/approved and where preferred route corridors have been identified. The line of these Route Protection Corridors is shown in Volume 3 LAP Map Browser which is accessible through www.corkcoco.ie'.*

- 2.2.12 In response to submissions from the Department of Environment, Community and Local Government and the South West Regional Authority, further Modifications to the Proposed Amendments were recommended in the Chief Executive's Report. The full text of the proposed modifications and the justification for same is set out in Volume I of the Section 12(8) Chief Executives Report.
- 2.2.13 This issue is considered MINOR in nature and the full text of the proposed modifications and the justification for same is set out in the Chief Executives Report prepared under section 20(3)(k) of the Planning and Development Acts (16th June, 2017).
- 2.2.14 An SEA Screening Report on the proposed further modifications was prepared which found the modifications would have a neutral or positive impact. A copy of this screening report is included in Appendix A of this Statement.

2.3 Statutory Consultation

- 2.3.1 In terms of the SEA and the AA, there have been three periods of consultation over the course of the preparation of the Blarney Macroom Municipal District Local Area Plan 2017.
- 2.3.2 The first public consultation, for the pre-draft stage, was held in between December 2015 and January 2016. Additional consultation on the Scoping stage for SEA was held in May 2016, when the statutory consultees for SEA in Ireland were contacted with the Preliminary Consultation Document and the SEA Scoping Document.
- 2.3.3 The second period of consultation included a public display of the Blarney Macroom Municipal District Local Area Plan 2017 alongside the SEA Environmental Report and associated Appropriate Assessment. This took place between November 2016 and January 2017. A total of 61 submissions were received on this suite of documents in relation to the Blarney Macroom Municipal District while at further 23 address issues relevant to the county as a whole.
- 2.3.4 A further period of public consultation on the Proposed Amendments to the Draft Plan took place during May 2017. An Addendum to the Strategic Environmental Assessment Environmental Report was also available for public consultation during this time. A further 20 submissions were received in response to these consultations.
- 2.3.5 At all stages of consultation, the content of the submissions received have been considered by the staff preparing the plan and by Members, and amendments have been made to the Draft Plan in response to these, where considered appropriate. Further detail on the submissions is provided in Section 3.

2.4 Alternatives Considered

- 2.4.1 The SEA Environmental Report has documented the reasonable alternatives considered as part of the Local Area Plan making process. As a Local Area Plan is at the lower end of the statutory plan hierarchy, and the Planning Acts require a Local Area Plan to be consistent with the objectives of the development plan, its core strategy and any regional spatial and economic strategy that applies to the area, the scope for considering alternatives at the Local Area Plan level is very limited as the key parameters have already been determined by the higher level plans. Given the detailed and binding nature of the Core Strategy in particular, it is clear that the strategic alternative scenarios can only be fully considered and environmentally assessed as part of the preparation of the higher level plans i.e. the County Development Plan and the Regional Spatial and Economic Strategy.

- 2.4.2 In Cork, successive County Development Plan strategies have sought to encourage balanced growth across the county to sustain the economies and service levels of the main towns and villages. The Regional Planning Guidelines support this balanced approach to development in order to maintain vibrant rural communities with an equal level of urban and rural growth. In this context the key aims of the Local Area Plan support the continuation of this approach, seeking sustainable patterns of growth in urban and rural areas.
- 2.4.3 Blarney Macroom Municipal District has an extensive urban structure and the Blarney Macroom Municipal District Local Area Plan provides for the development of the 2 Main Towns, 7 Key Village, 15 Villages, 25 Village Nuclei and 7 Other Locations. The overall population target of the District has already been set by the County Development Plan. The scenarios considered in preparing the Plan have therefore been prepared in this context. The overall level of growth allocated to the Municipal District is the same for each scenario, in line with the Core Strategy in the County Development Plan. The scenarios look at options for development within the MD. Scenarios which would be inconsistent with this approach, by increasing or reducing the overall level of growth within the MD for example, have not been considered.
- 2.4.4 The Scenarios considered for the Blarney Macroom Municipal District were as follows:
- (a) Scenario 1 Public Transport
 - (b) Scenario 2 Employment Towns
 - (c) Scenario 3 Balanced Growth
- 2.4.5 These three alternatives specifically focus on alternate means of achieving the aims of the new Plan. Strengths and weaknesses of the various alternatives were evaluated in the SEA taking into account both planning and environmental impacts.
- 2.4.6 The consideration of alternatives was part of the information presented to Elected Members and at public consultation to help make an informed choice with regards to the evolution of the Plan. Further details on the preferred alternative and reasons for its selection in light of the other alternatives are provided in Chapter 4 of this document.

2.5 Proposed Mitigation

- 2.5.1 Avoidance and Mitigation of impacts was addressed where possible at all stages of the formulation of the plan itself as part of the SEA process and the draft local area plan was drafted to minimise adverse impacts where possible. As part of the preparation of the Environmental Report and assessment of the potential impacts of the Plan against the Environmental Protection Objectives, recommendations for changes to the plan were made where necessary to address remaining issues and in order to avoid, reduce and mitigate potential impacts – see Table 2.1 above which sets out the recommendations of the Environmental Report and the Actions taken in response to these recommendations.

2.6 Compliance with EU Habitats Directive – Appropriate Assessment.

- 2.6.1 A further aspect of the assessment of the Plan was the undertaking of an Appropriate Assessment under the EU Habitats Directive (92/43/EEC). This parallel process ensured that environmental considerations, specifically focused on Natura 2000 sites, were integrated into the Plan as it was developed.
- 2.6.2 Under the EU Habitats Directive, any plan or project not directly connected with or necessary to the management of a Natura 2000 site, e.g. Special Area of Conservation (SAC) or Special Protection Area (SPA), but likely to have a significant effect thereon, either individually or in combination with

other plans or projects, shall be subjected to an appropriate assessment of its implications for the site in view of the site's conservation objectives. There are a number of Natura 2000 sites within and adjacent to the Blarney Macroom Municipal District, which could be impacted by the new Development Plan. Therefore, the AA process was applied to the Draft Local Area Plan, Proposed Amendments and the Modifications to the Amendment to determine if it would have significant effects on any of these European designated sites.

- 2.6.3 The Habitats Directive Assessment Screening Report prepared on the Draft Local Area Plan recommended a number of changes to the Draft Plan as detailed in Table 2.2 below. Where possible these issues were dealt with in formulating the Draft Plan. Where this was not possible, the issues were addressed at the amendments stage, as detailed in the following table.

Table 2.2: Summary of Habitats Directive Screening Process for the Draft Blarney Macroom Municipal District Local Area Plan.		
Section of Plan	Issue / Recommendation	Changes incorporated into Proposed Amendments / Final Plan
Section Two, Four, Five	The Gearagh SPA Concerned about water quality and the ecology of the area.	The plan has been amended to address this issue in accordance with proposed amendment BM.02.07.03, BM.04.03.02 BM.05.01.08 BM.05.02.03
Section 3 Blarney	Insert additional text into Paragraph 3.2.41 relating to Killowen River to address issue identified in SEA of proposed amendments as follows; The area of woodland along the Killowen River Valley should be protected and form part of any future green infrastructure network.	The plan has been amended to address this issue in accordance with proposed amendment BM.03.02.08
Section 4 Key Villages	St. Gobnet's Wood Special Area of Conservation - A significant portion of St. Gobnet's Wood lies within the settlement boundary of Ballymakeery/Ballyvourney. Most of the area is zoned as Open Space and the objective for this zone is to protect the unique heritage and amenity value of the woodland. However, small sections of SAC woodland lie	The plan has been amended to address this issue in accordance with proposed amendment BM.04.04.03

Table 2.2: Summary of Habitats Directive Screening Process for the Draft Blarney Macroom Municipal District Local Area Plan.		
Section of Plan	Issue / Recommendation	Changes incorporated into Proposed Amendments / Final Plan
	<p>within the area described to be existing built up area. This description of SAC land could result in land within the SAC coming under pressure to be developed.</p> <p>It was recommended that SAC lands would be designated as Open Space, not suitable for development.</p>	
Section 4 Key Villages & Section 5 Villages, Village Nuclei and Other Locations	<p>The Gearagh SAC and the Gearagh SPA</p> <p>There are a number of small settlements located within the catchment of the Gearagh. Responsible management of surface waters will be important to ensuring that new development in these settlements will not result in increased levels of surface water run off to rivers and streams flowing into the Gearagh. It was considered on assessment that objectives relating to villages and other settlements was not sufficiently clear in relation to this issue.</p> <p>The settlements of Ballingearry and Inchigeelagh are serviced by public wastewater treatment systems which discharge to the River Lee. There are issues relating to license compliance associated with the Ballingearry plant and waste water is being discharged untreated from the Inchigeelagh settlement. Both plants are observed to be having negative effects on water quality in the Lee which could have the potential to have negative consequences on water quality in</p>	<p>BM.02.07.03 Amendment to LAS-01(a) to clarify and standardise policy relating to surface and wastewater management applying to all settlements within the plan area.</p>

Table 2.2: Summary of Habitats Directive Screening Process for the Draft Blarney Macroom Municipal District Local Area Plan.

Section of Plan	Issue / Recommendation	Changes incorporated into Proposed Amendments / Final Plan
	<p>the Gearagh.</p> <p>It was recommended that policy relating to surface water management for key villages would be strengthened.</p> <p>It was recommended that policy relating to wastewater and protection of this site would be clarified in the plan to ensure that it is made clear that issues relating to compliance with license conditions and protection of water quality must be addresses (as well as capacity issues) to ensure that new development in settlements linked to the Gearagh catchment do not have a negative impact on the SAC or on the SPA.</p>	
<p>Section Five Toon Bridge Village Nuclei</p>	<p>The Gearagh SPA Concerned about water quality and the ecology of the area. Revise zoning Objective O-01 as follows; Open Space. This area is within the floodplain of the Toon River. Lands to remain predominantly open and rural in character, with some opportunities for recreation or amenity type uses. Parts of the zone are within the Gearagh Special Protection Area. These parts of the zone are not suitable for development. Development in other parts of this zone is likely to require the provision of an ecological impact assessment report (Natura Impact Statement) in accordance with the requirements of the Habitats Directive and may only proceed</p>	<p>The plan has been amended to address this issue in accordance with proposed amendment BM.05.02.03</p>

Table 2.2: Summary of Habitats Directive Screening Process for the Draft Blarney Macroom Municipal District Local Area Plan.		
Section of Plan	Issue / Recommendation	Changes incorporated into Proposed Amendments / Final Plan
	<p>where it can be shown that they will not have significant negative impact on the SPA and nearby SAC.</p> <p>A buffer zone will be required between any development proposed for this zone and the SPA. The size of the buffer zone will be determined at project level.</p> <p>The boundary of Toon Bridge overlaps with the Gearagh Special Protection Area. Development in Toon Bridge will only be permitted where it is shown that it is compatible with the requirements of the Birds Directive and the protection of this site.</p>	

3 Submissions and Observations

3.1 Introduction

3.1.1 This section deals with how submissions and observations from environmental authorities and members of the public, received throughout the process of preparing the local area plan, and relevant to the SEA process, were taken into account in the preparation of the final document. There have been three periods of consultation: - -

- a) Pre – Draft: Preliminary Consultation under Section 20 at the pre-draft plan stage was undertaken in December 2015.
- b) Consultation on the Draft Plan, Environmental Report, Strategic Flood Risk Assessment, Habitats Directive Assessment Screening Report in November 2016.
- c) Consultation on the Proposed Amendments to the Draft Plan, SEA Addendum Report and Natural / AA Screening Report in May 2017.

3.1.2 At all stages of consultation, the content of the submissions received have been considered by the team preparing the plan.

3.2 Pre Draft Consultation

3.2.1 The first stage in the preparation of the Blarney Macroom Municipal District Local Area Plan started in December 2015 with the publication of the Section 20 Preliminary Consultation Document. A Draft SEA Scoping Report was sent to all environmental authorities on the 22nd April 2016. The SEA Scoping Report provided an overview of the Municipal District, the suggested strategy for the proposed new local area plan, the alternatives considered, and the likely output of the new local area plan. The Scoping Report also examined the environmental baseline of the District and the existing environmental sensitivities of the area. In response this pre- draft consultation stage, submissions relevant to the SEA process were received from the EPA and Irish Water. These are outlined in Table 3.1 below.

Table 3.1 Summary of the issues Raised at SEA Scoping Stage.		
Name of Submitter	Summary of Issues Raised	Response
EPA	State that previous submission dated 21 st January 2016 in response to Preliminary Consultation Document should be taken into account in the preparation of the SEA Environment Report and lists the other Environmental Authorities that the Draft Scoping Report should be sent to.	The issues raised will be addressed as part of the Strategic Environmental Assessment and Habitats Directive Assessment of the Draft Local Area Plans. Draft Scoping Report was sent to all the Environmental Authorities (See Appendix 3).

Table 3.1 Summary of the issues Raised at SEA Scoping Stage.

Name of Submitter	Summary of Issues Raised	Response
Irish Water	<p>Observations relate to the potential environmental effects associated with the provision of sustainable, cost effective water services and the protection of water sources used for public supply.</p> <p>Need to be aware that due to the limited funding available and the legacy issue inherited by Irish Water in relation to available capacity and compliance, they will upgrade infrastructure as the need arises on a priority basis in line with national and regional planning policy and the County settlement hierarchy, subject to available funding and environmental constraints.</p> <p>It cannot be assumed that because the Council sets a population target for a settlement that water services will be made available for that target in advance.</p> <p>Many of the larger settlements identified in the County’s settlement hierarchy are located adjacent to sensitive/designated waters to which treated wastewater from these settlements must be discharged.</p> <p>Suggest that need to test the compatibility of settlement strategy with the SEA objectives EPO3 (BFF), EPO 5 (W), EPO6 (AQ/C) and EPO 10(MA).</p> <p>Locating large settlements in sensitive areas is not necessarily sustainable and achieving the objectives of EPO3 & EPO5 would impact on achieving the objective EPO Climate Change by expending significant energy to achieve the required standards and EPO10 by expending scarce monetary resources that could be better utilised in alternative settlement locations where receiving waters are not as sensitive.</p> <p>Ensure that the requirement for an available sustainable potable drinking water supply source to serve target populations is considered.</p> <p>The medium to long-term strategy of building resilience into the water supply networks will result in the decommissioning of smaller, unreliable water sources and increased</p>	<p>Comments noted and issues raised will be considered further in the preparation of the Draft Local Area Plan and the SEA Environment Report.</p> <p>The Draft LAP intends to deal in a comprehensive manner with all infrastructure requirements and the most appropriate mechanisms to deliver that infrastructure.</p>

Table 3.1 Summary of the issues Raised at SEA Scoping Stage.		
Name of Submitter	Summary of Issues Raised	Response
	<p>interconnection of supply networks to ensure that supply taken from sustainable water resources can be utilised throughout our supply networks.</p> <p>Note the tables included in scoping reports in relation to the status of water services relative to the suggested scale of development at settlement level but without the background to this assessment find it difficult to determine its accuracy.</p> <p>Note that a water treatment plant and water supply zone may serve a number of settlements and surrounding environs and the overall demand on the water treatment plant/supply zone is the more appropriate level to consider available capacity than settlement level.</p>	

3.2.2 The Scoping Report was finalised on the 31st May 2016 and issues raised were considered further the preparation of the Draft Local Area Plan and the SEA Environment Report.

3.3 Draft Plan and Environmental Report Consultation

3.3.1 The Environmental Report prepared to document the assessment of the environmental effects of implementing the aims and objectives of the Draft Local Area Plan made just one recommendation for change to the Draft Plan as detailed in Section 2.2. of this report. The full assessment and background to the recommendations is discussed in Chapter 6, Section 6.3 of the Environmental Report. As it was too late in the process to implement this recommendation, the Draft Plan was published without giving effect to the Recommendation of the Environmental Report, with the intention of addressing the issue at the amendment stage of the plan.

3.3.2 Following the publication of the Draft Plan and associated environmental reports, one hundred and nine submissions were received during the public consultation period. Thirty two of the submissions focused on general issues facing the wider County and the Municipal District as a whole, with a further 77 site specific submissions.

3.3.3 Details of all the submissions received were detailed in the Chief Executive's Report to Members in June 2017. The Chief Executive's Report highlighted the key issues arising from the submissions received as follows:

- (a) Issues in relation to Town Councils and the review of Town Development Plans.
- (b) Active Land Management and bringing land forward for development.
- (c) Strategic Land Reserves issues in Metropolitan Cork.
- (d) Alignment of the Plans with the Core Strategy of the County Development Plan and the quantum of land being zoned for development.

- (e) The availability / timing of delivery of Water Services Infrastructure.
- (f) Amount of land zoned for economic development.
- (g) Strategic Flood Risk Assessment.
- (h) Protection of Natural and Built Heritage, including Archaeology.
- (i) Reservation of lands for schools.
- (j) Strategic Environmental Assessment and the integration of the process into plan making.
- (k) Protection of natural heritage, ecology and biodiversity.
- (l) Issues in relation to transportation, sustainable travel, access to zoned lands, public transport etc.
- (m) Proposals for zoning additional land and extension of village development boundaries.

- 3.3.4 Two of the one hundred and nine submissions received made reference to the Environmental Report – these were from the Environmental Protection Agency (EPA) and the Southern Regional Assembly. These submissions were summarised and responded to in Chief Executive’s Report to Members under S20 of the Act.
- 3.3.5 The submission from the Southern Regional Assembly noted various elements of the Environmental Report but did not raise any issues requiring further clarification or make any recommendations in relation to the SEA process. No further action is considered necessary in relation to the Environmental Report, in response to the submission from the SRA submission.
- 3.3.6 The main issues raised by the EPA are detailed in Table 3.1 for ease of reference. These issues have also been discussed and responded to in the Chief Executive’s Report to Members. Where changes are proposed these are detailed in the final column of the Table. For the text of the amendment please see the ‘Proposed Amendments to the Draft Plan’ document for the Blarney Macroon Municipal District, published on 2 May, 2017, available on www.corklocalareaplans.com.

Table 3.1: Issues raised by the EPA in response to the Draft Local Area Plans.

	EPA Issue	CEO Response	Change proposed to Blarney Macroon LAP
1.	Development should be linked to the ability to provide water services infrastructure in advance of permission being granted.	This issue is already addressed by the objectives of each LAP which require that appropriate and sustainable water and waste water infrastructure, capable of meeting legal requirements and other relevant environmental objectives in relation to water quality / habitat protection, must be provided and be operational in advance of the commencement of any discharges from a development. Adequate provision for storm water disposal is also	Proposed Amendment No BM.02.07.03. For the text of the amendment please see the ‘Proposed Amendments to the Draft Plan’ document for the Blarney Macroon Municipal District, published on 02 May, 2017 and available on www.corklocalareaplans.com

Table 3.1: Issues raised by the EPA in response to the Draft Local Area Plans.

	EPA Issue	CEO Response	Change proposed to Blarney Macroom LAP
		<p>required.</p> <p>Nonetheless, in response to a number of different submissions it is proposed to amend and expand objective LAS-01 in Section 2 of the Local Area Plan to further address the following:</p> <ul style="list-style-type: none"> • water services/ water quality issues, • SUDs issues, • relevant Objectives in the County Development Plan 2014, • Developer provided water services infrastructure (not allowed unless agreed with Irish Water) 	
2.	Plans should include a reference to the National Planning Framework and the Regional Spatial and Economic Strategy	Plans will be amended to include a reference to the National Planning Framework and the Regional Spatial and Economic Strategy.	Proposed Amendment no BM.02.07.04. For the text of the amendment please see the 'Proposed Amendments to the Draft Plan' document for the Blarney Macroom Municipal District, published on 02 May, 2017 and available on www.corklocalareaplans.com
3.	In order to show how the SEA process has been integrated into the plans, the plans should clarify how the issues raised at the scoping stage have been addressed. In addition the plans should provide information on the environmental sensitivities of each area and the compliance status	<p>Issues in relation to the environmental sensitivity of each area, cumulative impacts and the compliance status of water services infrastructure has already been addressed, as far as it is practicable, in the Environmental Report and the objectives of the Draft Plan.</p> <p>Further clarification on the status of drinking water and waste water treatment infrastructure, as given in Table 2.3 of the Draft Plan will be included where appropriate.</p> <p>Proposed amendments to LAS-01</p>	<p>See proposed amendment BM.02.03.01 and BM.02.04.01 (Table 2.2)</p> <p>For the text of the amendment please see the 'Proposed Amendments to the Draft Plan' document for the Blarney Macroom Municipal District, published on 2nd May, 2017 and available on www.corklocalareaplans.com</p>

Table 3.1: Issues raised by the EPA in response to the Draft Local Area Plans.

	EPA Issue	CEO Response	Change proposed to Blarney Macroom LAP
	of critical water services infrastructure in particular. In terms of impacts on receiving water, for example, the significant deficiencies in WWT infrastructure should be a key consideration.	as outlined at item 1 above further strengthen the link between development, water services provisions and environmental protection.	
4.	Need for priority secondary WWT in key settlements should be addressed as a priority.	Prioritisation of the delivery of secondary waste water treatment facilities is a matter for Irish Water.	No amendment proposed on this issue. See changes proposed under item 1 above.
5.	Commitment to implementing the National Broadband Plan and preparing a Climate Change Adaptation Strategy should be included in each plan	With regard to the preparation of a Climate Change Adaptation Strategy, it is recognised that this falls within the remit of the Council to prepare, but it is beyond the scope of the Local Area Plan process. Similarly implementation of the National Broadband Plan is not a matter for the Local Area Plan.	No amendment proposed
6.	Clarification is required on whether habitat mapping has informed the plans. Plans should include recommendations regarding the protection of key ecological corridors and linkages within each plan area.	Habitat mapping for parts of the Blarney, Carrigaline and Midleton Electoral Areas was completed some years ago and has informed the preparation of the plans. It is has not been possible to complete habitat mapping for the other main towns of the county in time to inform the LAP process, but the projects outputs will be able to inform the Councils wider planning functions. Objectives for the protection of natural heritage have already been	See Proposed Amendment BM.02.04.03, BM.01.08.01, BM.03.02.02, BM.02.07.03, BM.03.02.06, BM.05.02.03, in response to submissions and in particular the Habitat Directive Assessment Screening Report. For the text of the amendment please see the 'Proposed Amendments to

Table 3.1: Issues raised by the EPA in response to the Draft Local Area Plans.

	EPA Issue	CEO Response	Change proposed to Blarney Macroom LAP
		<p>included in the plan. See LAS-01 for example in Section 2 of the Plan which provides for the protection of Natura sites, the biodiversity of the area.</p> <p>Objective LAS-01 also references relevant Heritage related objectives of the County Development Plan 2014 including, HE 2-1, and HE2-2.</p> <p>LAS -01 (d) further references the protection of landscape features, ecological corridors and areas of local biodiversity value, wetlands and features of geological value within this planning area in accordance with County Development Plan 2014 objectives HE 2-3, HE 2-4, HE 2-5, HE 2-6 and HE 2-7.</p>	<p>the Draft Plan' document for the Blarney Macroom Municipal District, published on 02 May, 2017 and available on www.corklocalareaplans.com</p>
7.	<p>Potential for cumulative and in combination effects should be assessed in more detail and clarification is required on how the preferred development scenarios were informed by the environmental sensitivities of an area.</p>	<p>These issues have already been addressed, as far as it is practicable, in the Environmental Report .</p> <p>The Draft Blarney Macroom Plan has been prepared by undertaking a review of the existing statutory plans for the area - the Blarney Electoral Area Local Area Plan 2011 and the Macroom Local Area Plan 2011 (as amended), which were themselves subject to Strategic Environmental Assessment, Habitats Directive Assessment, and Flood Risk Assessment, prior to adoption. The reality is that many of the provisions of the current LAP's have been carried forward, unchanged, into the new Draft Plan 2016.</p>	<p>No further changes proposed</p>
8.	<p>Changes recommended to the wording of</p>	<p>Suggested changes to EPO1 and EPO5 will be implemented. Changes to EPO8 require additional</p>	<p>As suggested by the EPA submission it is proposed to amend the Indicator for</p>

Table 3.1: Issues raised by the EPA in response to the Draft Local Area Plans.

	EPA Issue	CEO Response	Change proposed to Blarney Macroom LAP
	<p>EPO1, EPO5 and EPO8 and clarification is required on how the alternatives have been assessed.</p>	<p>indicators which have no ready source of data at a local level. With regard to the consideration of alternatives, this process relates to the review of the local area plans, where the plan being reviewed has already been subject to the SEA process. In addition the Local Area plans are about giving effect at the local level to the strategy of the County Development Plan, which has itself been subject to SEA.</p>	<p>EPO1 to replace the word 'increase' with 'change' as follows: Significant increase change in the population of the main towns. Distance and mode of transport to work / school.</p> <p>In relation to EPO 5 it is proposed to amend the wording of the first Target to include the additional words "as follows", as shown below:</p> <p>To achieve at least 'good' status in all bodies of surface waters (lakes, rivers, transitional and coastal waters).</p> <p>See Appendix A for full text.</p>
<p>9.</p>	<p>Clarification is required on what mitigation measures are proposed to address identified environmental sensitivities and on proposed monitoring programmes</p>	<p>Mitigation measures are built into the objectives of each Local Area Plan e.g. objectives re water services, SUDS, protection of Natura Sites, biodiversity, ecological corridors as mentioned at item 1 above. Monitoring will be addressed further in the Environmental Statement.</p> <p>In addition the County Development Plan 2014 includes many protective objectives in relation to issues such as Development Management and Protection of Amenities, Sustainable Residential Development, Natural, Built and Cultural Heritage, Biodiversity, Landscape, Water Quality, Pollution Control, protecting Air Quality, managing Noise and Light emissions, flood risk management, sustainable energy etc. All</p>	<p>No further changes proposed</p>

Table 3.1: Issues raised by the EPA in response to the Draft Local Area Plans.

	EPA Issue	CEO Response	Change proposed to Blarney Macroom LAP
		proposals for development under the Local Area Plan, must comply in the first instance, with the all the provisions of the County Development Plan.	

3.3.7 Following the consideration by Members of the Chief Executive’s report further meetings of Council were held March 2017 to discuss the proposed amendments to the Plan. At the Council Meeting of 27 March 2017, Members of Council agreed to make 73 amendments to the Draft Blarney Macroom Municipal District Local Area Plan. These amendments were published for consultation on 2 May 2017.

3.4 Proposed Amendments to the Draft Plan.

- 3.4.1 On the 2nd of May 2017, the proposed amendments to the Draft Blarney Macroom Municipal District Local Area Plan were published for public consultation.
- 3.4.2 These proposed amendments were screened for the need for full SEA in order to determine if significant impacts would arise as a result of their inclusion. The screening process comprised assessing each proposed amendment against the Environmental Protection Objectives to determine if they would have a potentially positive, negative, uncertain or neutral impact. The Environmental Protection objectives are detailed in Table 3.1 while the summary results of the assessment of each proposed amendment is detailed in Table 3-2 below.

Table 3.1: List of Environmental Protection Objectives, Targets and Indicators	
EPO 1	Population (P) To ensure the sustainable development of the area so people have the opportunity to live in communities with high quality residential, working and recreational environments with sustainable travel patterns.
EPO 2	Human Health (HH) To protect and enhance human health and manage hazards or nuisances arising from traffic & incompatible land uses.
EPO 3	Biodiversity, Flora and Fauna (BFF) Throughout the county, conserve and restore ecosystems, habitats and species in their natural surroundings, and ensure their sustainable management, including the ecological corridors between them.
EPO 4	Soil (S) Protect the function and quality of the soil resource in the Fermoy Municipal District
EPO 5	Water (W) Maintain and improve the quality of water resources and improve the management and sustainable use of these resources to comply with the requirements of the WFD.
EPO 6	Air Quality and Climate Factors (AQ/C) Protect and improve air quality.
EPO 7	Contribute to mitigation of, and adaptation to, climate change.
EPO 8	Cultural Heritage (CH) Protect and, where appropriate, enhance the character, diversity and special qualities of architectural, archaeological and cultural heritage (including Gaeltachtaí) in County Cork.
EPO 9	Landscape (L) Protect and, where appropriate, enhance the character, diversity and special qualities of landscapes in County Cork.
EPO 10	Material Assets (MA) Make best use of the material assets of the area and promote the sustainable development of new infrastructure to provide for the current and future needs of the population.
EPO 11	Flooding (F) Protect flood plains and areas at risk of flooding from inappropriate development.

- 3.4.3 Many of the proposed amendments include additional background information on an issue while not affecting the policies or objectives of the plan, or relate to the provision of factual information or clarification. Where such changes were considered unlikely to result in any significant

environmental impact, they have been judged to be 'neutral'. Other changes were considered either most likely to be neutral or most likely to have positive impacts. In the case of both neutral and positive impacts the proposed amendments were screened out on the basis of having no potential for significant negative impacts.

Table 3.2 Summary of the outcome of the SEA Assessment of the Proposed Amendments to the Draft Blarney Macroom MD LAP					
Amendment Ref No.	Impact of EPO's				Conclusion
	+	-	?	NE Neutral	
Section 1 Introduction					
BM.01.01.01				EPO 1 to 11	Screened out
BM.01.07.01				EPO 1 to 11	Screened out
BM.01.07.02				EPO 1 to 11	Screened out
BM.01.07.03	EPO 11			EPO 1 to EPO 10	Screened out
BM.01.07.04	EPO 1			EPO 2 to EPO 11	Screened out
BM.01.07.05				EPO 1 to 11	Screened out
BM.01.07.06				EPO 1 to 11	Screened out
BM.01.07.07				EPO 1 to 11	Screened out
BM.01.07.08				EPO 1 to 11	Screened out
BM.01.08.01	EPO 1 to EPO 2,			EPO 3 to EPO 11	Screened out
Section 2 Local Area Strategy					

Table 3.2 Summary of the outcome of the SEA Assessment of the Proposed Amendments to the Draft Blarney Macroom MD LAP

Amendment Ref No.	Impact of EPO's				Conclusion
	+	-	?	NE Neutral	
BM.02.03.01				EPO 1 to 11	Screened out
BM.02.04.01				EPO 1 to 11	Screened out
BM.02.04.02				EPO 1 to 11	Screened out
BM.02.04.03				EPO 1 to 11	Screened out
BM.02.05.04				EPO 1 to 11	Screened out
BM.02.06.01				EPO 1 to 11	Screened out
BM.02.06.02				EPO 1 to 11	Screened out
BM.02.07.01	EPO 10,			EPO 1 - EPO 9, EPO 11	Screened out
BM.02.07.02	EPO 10,			EPO 1 - EPO 9, EPO 11	Screened out
BM.02.07.03	EPO 5, EPO 8,			EPO 1 - EPO 7, EPO 9, EPO 10, EPO 11	Screened out
BM .02.07.04				EPO 1 to 11	Screened out

Table 3.2 Summary of the outcome of the SEA Assessment of the Proposed Amendments to the Draft Blarney Macroom MD LAP

Amendment Ref No.	Impact of EPO's				Conclusion
	+	-	?	NE Neutral	
Section 3 Main Towns					
BM .03.01.01				EPO 1 to 11	Screened out
Blarney					
BM .03.02.01				EPO 1 to 11	Screened out
BM .03.02.02	EPO1, EPO2, EPO4, EPO5, EPO7, EPO9 - EPO11			EPO 3, EPO 6, EPO 8	Screened out
BM .03.02.03	EPO1, EPO2, EPO4, EPO5, EPO7, EPO9 - EPO11			EPO 3, EPO6, EPO8	Screened out
BM .03.02.04				EPO 1 to 11	Screened out
BM .03.02.05				EPO 1 to 11	Screened out
BM .03.02.06	EPO1, EPO2, EPO4, EPO6, EPO7, EPO10, EPO 11			EPO 3, EPO 5, EPO8, EPO 9,	Insert additional text into Paragraph 3.2.41 relating to Killowen River to address issue identified in SEA of proposed amendments as follows; The area of woodland along the Killowen River Valley

Table 3.2 Summary of the outcome of the SEA Assessment of the Proposed Amendments to the Draft Blarney Macroom MD LAP

Amendment Ref No.	Impact of EPO's				Conclusion
	+	-	?	NE Neutral	
					should be protected and form part of any future green infrastructure network. Screened out
BM .03.02.07	EPO 1			EPO 2 to 11	Screened out
Macroom					
BM.03.03.01				EPO 1 to 11	Screened out
BM.03.03.02				EPO 1 to 11	Screened out
BM.03.03.03				EPO 1 to 11	Screened out
Section 4 Key Villages					
BM.04.01.01				EPO 1 to 11	Screened out
Ballineen/Enniskeane					
BM.04.02.01				EPO 1 to 11	Screened out
Ballingeary					
BM.04.03.01	EPO 1 – EPO 5, EPO 7,9,10,11			EPO 6 EPO 8	Screened out
BM.04.03.02	EPO 1			EPO 2 to 11	Screened out

Table 3.2 Summary of the outcome of the SEA Assessment of the Proposed Amendments to the Draft Blarney Macroom MD LAP

Amendment Ref No.	Impact of EPO's				Conclusion
	+	-	?	NE Neutral	
BM.04.03.03				EPO 1 to 11	Screened out
Ballymakeery/Ballyvourney					
BM.04.04.01	EPO 1,2,3,4,5,7,9, 10,11			EPO 6 EPO 8	Screened out
BM.04.04.02	EPO 1,			EPO 2 to EPO 11	Screened out
BM.04.04.03	EPO3,			EPO1, EPO2, EPO4 - EPO11	Screened out
BM.04.04.04				EPO 1 to 11	Screened out
Coachford					
BM.04.05.01	EPO 1			EPO 2 to 11	Screened out
BM.04.05.02	EPO 1,2,3,4,5,7,9, 10,11			EPO 6 EPO 8	Screened out
BM.04.05.03				EPO 1 to 11	Screened out
Grenagh					
BM.04.06.01				EPO 1 to 11	Screened out
Killumney/Ovens					
BM.04.07.01				EPO 1 to 11	Screened out

Table 3.2 Summary of the outcome of the SEA Assessment of the Proposed Amendments to the Draft Blarney Macroom MD LAP

Amendment Ref No.	Impact of EPO's				Conclusion
	+	-	?	NE Neutral	
BM.04.07.02	EPO 1			EPO 2 to 11	Screened out
BM.04.07.03				EPO 1 to 11	Screened out
BM.04.07.04				EPO 1 to 11	Screened out
BM.04.07.05	EPO 1			EPO 2 to 11	Screened out
Tower					
BM.04.08.01	EPO 1			EPO 2 to 11	Screened out
BM.04.08.02	EPO 1			EPO 2 to 11	Screened out
BM.04.08.03				EPO 1 to 11	Screened out
BM.04.08.04	EPO 1,2,3,4,5,7,9,10,11			EPO 6 EPO 8	Screened out
BM.04.08.05				EPO 1 to 11	Screened out
BM.04.08.06	EPO 1			EPO 2 to 11	Screened out
Section 5 Villages, Village Nuclei and Other Locations					
BM.05.01.13				EPO 1 to 11	Screened out
Aherla					
BM.05.01.01	EPO 1			EPO 2 to	Screened out

Table 3.2 Summary of the outcome of the SEA Assessment of the Proposed Amendments to the Draft Blarney Macroom MD LAP

Amendment Ref No.	Impact of EPO's				Conclusion
	+	-	?	NE Neutral	
				11	
Cloughduv					
BM.05.01.02				EPO 1 to 11	Screened out
Clondrohid					
BM.05.01.03	EPO 1			EPO 2 to 11	Screened out
Courtbrack					
BM.05.01.04	EPO 1 – EPO 5 , EPO 7,9,10,11			EPO 6 and 8	Screened out
Crookstown					
BM.05.01.05				EPO 1 to 11	Screened out
BM.05.01.06					Screened out
BM.05.01.07	EPO 1			EPO 2 to 11	Screened out
Crossbarry					
BM.05.01.11				EPO 1 to 11	Screened out
Inchigeelagh					
BM.05.01.08	EPO 1 TO EPO 5, EPO 8 to EPO 11.			EPO 6 EPO 7	Screened out
BM.05.01.10				EPO 1 to 11	Screened out
Kilmurry					

Table 3.2 Summary of the outcome of the SEA Assessment of the Proposed Amendments to the Draft Blarney Macroom MD LAP

Amendment Ref No.	Impact of EPO's				Conclusion
	+	-	?	NE Neutral	
BM.05.01.12	EPO 1			EPO 2 to 11	Screened out
Upper Dripsey					
BM.05.01.09	EPO 1 – EPO 5, EPO 7,9,10,11			EPO 6 and 8	Screened out
Village Nuclei					
BM.05.02.04				EPO 1 to 11	Screened out
Ballinagree					
BM.05.02.01	EPO 1			EPO 2 to 11	Screened out
Carrigadrohid / Killinardrish					
BM.05.02.02	EPO 1 – EPO5, EPO 7,9,10,11			EPO 6 and 8	Screened out
Toon Bridge					
BM.05.02.03				EPO 1 to 11	Will include revised text as follows; “The boundary of Toon Bridge overlaps with the Gearagh Special Protection Area. Development in Toon Bridge will only be permitted where it is shown that it is compatible with the requirements

Table 3.2 Summary of the outcome of the SEA Assessment of the Proposed Amendments to the Draft Blarney Macroom MD LAP

Amendment Ref No.	Impact of EPO's				Conclusion
	+	-	?	NE Neutral	
					of the Birds Directive and the protection of this site.*" Screened out

Public Consultation on the Proposed Amendments

3.4.4 The amendments were placed on public display for a further period of public consultation with the addendum to the Environmental Report and the supporting environmental assessments during the month of May 2017.

3.4.5 A total of 20 submissions were received on the proposed amendments. These included submissions from members of the public and statutory consultees. Details of all the submissions received were detailed in the Chief Executive's Report to Members in June 2017. All submissions were summarised in this report and responded to by the Chief Executive. In general the submissions fell in the following categories:

- a. Submissions in support of the specific amendments or proposed new zonings.
- b. Submissions opposed to specific amendments.
- c. Submissions requesting additional new zonings or changes to the published amendments.
- d. Some of the submissions did not refer to the amendments and were therefore outside of the scope of this part of the process.

3.4.6 In terms of the submissions from the Statutory Bodies, the submission from the Environmental Protection Agency was the only one to specifically reference the SEA process.

3.4.7 The submissions from the Department of Housing, Planning, Community and Local Government, the Southern Regional Assembly and Department of Education and Skills were generally positive and supportive of the approach taken in the amendments. No changes were proposed to the published amendments in response to these submissions.

3.4.8 The submission from the National Transport Agency sought to ensure that plans are modified to reflect the outcome of transport studies which are currently underway / will be completed in the future and to ensure they are consulted in relation to the development strategies for the Urban Expansion areas. The NTA recommend omission of amendments in relation to the Strategic Land Reserve, Outlet Centres and Large Scale Retail Warehousing and seek further detailed consultation

in relation to a proposal for a new hospital within the Science Park and proposals in relation to Cork Airport. No changes were proposed to the published amendments in response to this submission.

- 3.4.9 The submission from Transport Infrastructure Ireland (TII) made a number of points about the protection of lands associated with the National Road Projects, and the need to protect existing national routes from inappropriate development. TII also recommend omission of the amendments in relation to the Strategic Land Reserve, Outlet Centres and Large Scale Retail Warehousing and sought further clarity in relation to proposals for the funding of upgrades to the national road network that will be needed to facility private development as TII will not be responsible for same i.e. the development contribution scheme. No changes were proposed to the published amendments in response to this submission, although it is proposed to include additional non material text in Section One of the Plan regarding the protection of national route corridors.
- 3.4.10 The submission from the EPA acknowledges the Council's position with regard to the SEA of the amendments to the plan and comments on the amendments proposed in relation to the flood risk management, the core strategy, infrastructure led development, transport planning, protection of water quality and reminds the Council of the need to assess any future amendments to the plan and prepare the final SEA Statement. No changes were proposed to the published amendments in response to this submission
- 3.4.11 Please see the Chief Executives Report to Members dated 16th June 2017 for further details of the individual submissions and the Chief Executive's recommendations. The report is available on www.corklocalareaplans.com

Modifications to amendments as recommended by the Chief Executive

- 3.4.12 Having considered the submissions received in response to the publication of the amendments proposed for the Draft Blarney Macroom Municipal District Local Area Plan, one ***non material minor modifications*** to the published amendments were recommended by the Chief Executive.
- 3.4.13 Firstly, arising from the TII submission [AMD20993186], it is proposed to insert some additional non material text into Section One of each plan under the heading of 'Traffic and Transport' as follows:
- 'The Council, in consultation with the Transport Infrastructure Ireland, will protect proposed national road route corridors where the route selection process has been completed/approved and where preferred route corridors have been identified. The line of these Route Protection Corridors is shown in Volume 3 LAP Map Browser which is accessible through www.corkcoco.ie'.*
- 3.4.14 This change is considered MINOR (Non material) in nature.**

SEA Assessment of the Proposed Modification:

- 3.4.15 The SEA screening of the proposed further modifications to the Material Amendments to the Blarney Macroom Cork MD Draft Local Area Plan are set out in Appendix A of this report, where it is concluded that the proposed further minor (non material) modifications will both have a neutral impact.

4 Reasons for choosing the Plan as adopted.

4.1 Introduction

4.1.1 This section of the Environmental Statement describes the different scenarios that were considered by the Council as part of the preparation of the Draft Blarney Macroom Municipal District Local Area Plan, and the SEA process, and the reasons for choosing the plan as adopted, in the light of the reasonable alternatives dealt with in accordance with Article 9 of the Directive.

4.2 Context for considering Alternatives

4.2.1 Three alternative scenarios were considered as part of the preparation of the Draft Local Area plan. As a Local Area Plan is at the lower end of the statutory plan hierarchy, and the Planning Acts require a Local Area Plan to be consistent with the objectives of the development plan, its core strategy and any regional spatial and economic strategy that applies to the area, the scope for considering alternatives is very limited as the key parameters have already been determined by the higher level plans.

4.2.2 In Cork, successive County Development Plan strategies have sought to encourage balanced growth across the county to sustain the economies and service levels of the main towns and villages. The Regional Planning Guidelines support this balanced approach to development in order to maintain vibrant rural communities with an equal level of urban and rural growth. In this context the key aims of the Local Area Plan support the continuation of this approach, seeking sustainable patterns of growth in urban and rural areas.

4.2.3 Blarney Macroom Municipal District has an extensive urban structure and the Blarney Macroom Municipal District Local Area Plan provides for the development of the 2 Main Towns, 7 Key Village, 16 Villages, 25 Village Nuclei and 7 Other Locations. The overall population target of the District has already been set by the County Development Plan. The scenarios considered in preparing the Plan have therefore been prepared in this context. The overall level of growth allocated to the Municipal District is the same for each scenario, in line with the Core Strategy in the County Development Plan. The scenarios look at options for development within the MD. Scenarios which would be inconsistent with this approach, by increasing or reducing the overall level of growth within the MD for example, have not been considered.

4.2.4 The Scenarios considered for the Blarney Macroom Municipal District were as follows:

(d) Scenario 1 **Public Transport**

(e) Scenario 2 **Employment Towns**

(f) Scenario 3 **Balanced Growth.**

4.2.5 The scenarios are discussed further below.

SEMPRe

4.2.6 The assessment of the alternative scenarios was also informed by the SEMPRE Settlement Sustainability project for Cork which was completed in 2013. The study involved a detailed analysis of the sustainability of the 26 main towns in County Cork using Sustainability Evaluation Metric for Policy Evaluation (SEMPRe) which is an indicator based method of sustainability measurement. The study identified the relative sustainability of the 26 main towns using a series of 25 sustainable indicators, (Table 5-2) of which 5 were identified as key performance indicators (measure

significant aspects of sustainability). Each settlement was assessed and awarded a score out of 100, enabling settlements to be ranked in terms of relative sustainability. The Sustainable Development Index (SDI) scores for the 26 main settlements in Cork are detailed in Table 5-1 and are organised into 3 categories. It can be observed that in general, larger settlements are more sustainable and as distance from Cork city increases, settlement sustainability decreases:

- **Category 1:** settlements have the highest SDI results,
- **Category 2:** have intermediate SDI results, and
- **Category 3:** has the lowest SDI results.

Table 5.2: Settlement Sustainable Development Indicators
Infrastructure and location
Infrastructural capacity for settlement expansion**
Connected to gas distribution network
Index of recycling facilities
Proportion of households with broadband internet
Presence of farmers markets
Water and wastewater
Water quality of water bodies
Wastewater treatment spare capacity
Unaccounted for water
Populated area at risk of flooding**
Urban wastewater treatment status
Population and urban form
Planned population density **
Proportion of population unemployed
Proportion of population with 3 rd level education
Housing vacancy rate
Distance to nearest largest retail centre
Transport and energy
Average transport CO ₂
Settlement walkability
Number of public transport services/1000 population**
Average household heating CO ₂
Proportion of population travelling to work by private car
Livability
Distance to nearest acute hospital**
Tidy Towns points score
SAC, SPA, HA within 5km of settlement
Distance to nearest park, nature reserve or wildlife park
Presence of 24 hour Garda station
** key performance indicators

Table 5.1: Main Towns Sustainable Settlement Ranking			
Settlement	SDI Score 2013	Category	Population 2011
Ballincollig	62.8	1	17,368
Blarney	61.5	1	2,437
Carrigaline	57.2	1	14,775
Carrigtwohill	56.8	1	4,551
Midleton	54.9	1	12,001
Cobh	54.8	1	12,347
Bandon	54.5	1	6,640
Mallow	53.6	1	11,605
Glanmire	53.5	1	8,924
Bantry	53.1	1	3,348
Clonakilty	50.3	2	4,721
Kinsale	50.3	2	4,893
Fermoy	49.6	2	6,489
Passage West	48.6	2	5,709
Macroom	46.7	2	3,879
Buttevant	46.1	2	945
Schull	43.8	2	658
Mitchelstown	42.8	2	3,677
Charleville	41.1	3	3,646
Newmarket	41.0	3	988
Skibbereen	39.2	3	2,670
Youghal	38.2	3	7,794
Dunmanway	37.8	3	1,585
Castletownbere	37.7	3	912
Millstreet	36.7	3	1,574
Kanturk	35.3	3	2,263

- 4.2.7 In general Category 1 settlements are relatively large in terms of population size and are located in relatively close proximity to Cork city. Category 1 settlements benefit from economies of scale in terms of infrastructure and services. All settlements in the County Metropolitan Strategic Planning Area are Category 1 settlements with the exception of Passage West which falls into Category 2. Category 1 settlements outside of the Metropolitan SPA are: Mallow, Bandon and Bantry.
- 4.2.8 Category 2 settlements generally have smaller population sizes and are more peripheral relative to Cork City. Certain settlements such as Schull and Buttevant have population sizes of less than 1,000 persons and peripheral locations yet fall into the intermediate sustainability category.
- 4.2.9 Category 3 settlements are the least sustainable (with an average SDI of 38.4) and range in population size from Castletownbere (912 persons) to Youghal (7,794 persons) with an average of 2,682 persons. In general category 3 settlements are smaller settlements sited in more peripheral locations relative to Cork city, and are mainly located in the North and West Strategic Planning areas.
- 4.2.10 The score each town receives is determined by how the town measures up in relation to the indicators used in the study which were arrived at following consultation with a range of stakeholders. Indicators chosen were limited by data availability and applicability at the spatial scale of individual towns and it is acknowledged that the use of different indicators may yield different results. The lack of public transport provision and the high reliance on the private car as a means of travelling to work means that most settlements score poorly in terms of transportation while those with an older housing stock score poorly in terms of energy due to higher household heating CO2 emissions. Proximity to the city influenced two indicators (proximity to large retail centre and an acute hospital) so for some towns their sustainability automatically decreases with distance from the city. The results of the Study have informed the consideration of alternative scenarios for development in the formulation of the local area plan.

4.3 Description of Alternatives Plan Scenarios

- 4.3.1 The Scenarios considered for the Blarney Macroom Municipal District were as follows:

Scenario 1: Public Transport

- 4.3.2 This scenario seeks to focus development within Metropolitan Cork within the city suburbs in the first instance and then along a north/ south public transport corridor between Blarney /Cork City/Ballincollig to facilitate greater use of public transport infrastructure and underpin additional investment in public transport services. In the Greater Cork Ring, Strategic Planning Area the scenario focuses a greater proportion of development in a smaller number of settlements to enhance the viability of bus based inter-urban public transport services. Under this scenario the potential for growth is still dispersed over the entire settlement network but a greater proportion of the growth is focused on a smaller number of locations.
- 4.3.3 Within Metropolitan Cork this scenario looks at directing higher levels of growth to the environs of the City and the towns along the Midleton- Cork City – Ballincollig transport corridor. Growth would involve development of brownfield and greenfield areas and would need a proactive planning approach to secure its delivery. This strategy would also ensure that more people are able to live closer to the employment opportunities offered by the metropolitan area. This strategy would also give rise to increased demand for supporting infrastructure and services within the metropolitan area, supporting the strategy for growth in the city.

- 4.3.4 The second phase of growth would concentrate development increasingly along a west east corridor, from Ballincollig - Cork City – Blarney. High density development, both residential and employment related would be encouraged along the route corridor, on brownfield and greenfield lands.
- 4.3.5 Very little growth has been allocated to the rural area under this scenario. It is anticipated that the reduced growth targets for the rural areas combined with a revised approach to managing rural housing, would serve to further consolidate growth in those areas along the preferred public transport corridors.
- 4.3.6 In the Greater Cork Ring, this scenario concentrates growth in fewer settlements.
- 4.3.7 In summary, within the Blarney- Macroom Municipal District, this scenario concentrates growth in fewer settlements, with most of the growth directed towards Blarney and Macroom with the aim of delivering a sufficient critical mass of population in these towns so as to justify further investments in primarily rail and bus based public transport around the county and growth in rural areas is curtailed.

Environmental Impacts of Scenario 1

- 4.3.8 Scenario One allocates some growth to every settlement in the network and to villages and rural areas, while seeking to concentrate a greater proportion of the growth in a smaller number of settlements. Many of these settlements have inadequate drinking water supply and/or waste water treatment infrastructure, and significant public investment in infrastructure will be required to enable such development to take place. Such investment is essential to accommodate the growth and mitigate impacts on water quality, human health etc. This dispersed pattern of growth will generally give rise to some cumulative impacts on ground and surface water quality, heritage, landscape and biodiversity and will lead to increased levels of environmental effects associated with additional commuting such as increased energy consumption, emissions to air, road traffic noise etc.
- 4.3.9 In those areas where more intense levels of growth are promoted, there is greater potential for negative environmental impacts on soil, air quality, biodiversity and landscape. Such impacts can however be managed by adherence to good practice guidance and procedures in development management. Intense development in some areas would also be balanced with lower development pressures in other areas, particularly the villages and rural areas which will lead to less pressure on biodiversity, groundwater resources, flora and fauna etc. and the general rural amenities of the county.
- 4.3.10 Investment in infrastructure in the main growth centres can be more targeted, potentially leading to better quality provision/ design solutions/ economies of scale.
- 4.3.11 Within the main growth areas, the correlation between population growth and public transport infrastructure will have a neutral to positive environmental impact particularly on air quality, climatic factors and human health due to the reduction in the need to travel and road traffic emissions. The concentration of population within the built up area of the city and its environs might also encourage a greater proportion of people to consider a move to other modes of transport such as walking and cycling with positive benefits on human health, air quality etc.

Planning Effects of Scenario 1

- 4.3.12 While the settlement pattern for the county remains dispersed, overall commuting should decrease as a greater proportion of population growth is accommodated in the main settlements where public transport is available, reducing commuting distances and car dependency with associated positive benefits for the population.
- 4.3.13 The concentration of growth in the manner proposed by this strategy may lead to reduced levels of investment in the other areas which may have negative impacts on quality of life and the quality of the urban environment if there are higher levels of vacancy. The reduced population targets for towns

outside the corridor may also hinder their ability to secure investment in waste water infrastructure in the future if there are lower levels of population and employment growth.

- 4.3.14 Dispersed settlement pattern means limited resources for infrastructural investment have to be spread over a large number of settlements, leading to deficiencies in the level of service provided with potential for negative impacts on the environment (most likely in the area of waste water treatment and water quality). The reduced population targets for towns outside the corridor may also hinder their ability to secure investment in waste water infrastructure in the future if there are lower levels of population and employment growth.

Table 5.3: Scenario 1: Public Transport - Population Targets				
	Census Population 2011	CDP 2014 2022 Target Population	Scenario 1 Population Target 2022	Scenario 1 Population Growth 2011 - 2022
Blarney Macroom MD				
Blarney	2,437	7,533	8,000	5563
Macroom	3,879	4,536	4,536	657
Total Main Towns	6,316	12,069	12,536	6220
Villages and Rural	37,082	37,904	37,437	355
Total Blarney Macroom	43,398	49,973	49,973	6575

Scenario 2: Employment Towns

- 4.3.15 This strategy continues to focus the greatest proportion of population growth to the Metropolitan Area which is the employment focus for the Cork City Gateway. This approach is similar to the planning strategy adopted in the previous County Development Plan.
- 4.3.16 Within the Cork Ring the growth strategy is adjusted to focus higher levels of growth in a fewer number of settlements where accessibility to good roads infrastructure is available and these towns can perform an important sub-regional focus. This is offset by lower levels of growth in the remaining Ring Towns.
- 4.3.17 This Scenario looks at employment-led growth which focuses development in key locations where employment growth is more likely to be delivered and differs from previous Plan strategies which spread growth more evenly across all the Main Settlements.
- 4.3.18 In summary, within the Blarney Macroom MD this scenario focuses growth in Blarney with reduced growth targets in Macroom. This takes account of the proposed employment policies of the Plan. This approach reinforces the important regional employment focus allocated to Blarney as part of the Metropolitan Gateway in the CDP and acknowledges the existing role Macroom plays as an employment centre serving a wider hinterland area.

Environmental Impacts Scenario Two

- 4.3.19 Scenario Two allocates growth across the full settlement network, while seeking to concentrate a greater proportion of the growth in a smaller number of settlements where economic/employment growth may be more easily achieved. Many of these settlements have inadequate drinking water supply

and/or waste water treatment infrastructure, and significant public investment in infrastructure will be required to enable such development to take place. Such investment is essential to accommodate the growth and mitigate impacts on water quality, human health etc. This dispersed pattern of growth will generally give rise to some cumulative impacts on ground and surface water quality, heritage, landscape and biodiversity and will lead to increased levels of environmental effects associated with additional commuting such as increased energy consumption, emissions to air, road traffic noise etc.

4.3.20 This scenario concentrates economic growth and employment growth in a smaller number of settlements, making them more self sufficient. This could potentially have negative impacts on soil, air quality, biodiversity and landscape but these impacts can be mitigated by implementing good proactive in development management and would be balanced with lower development pressures in other areas, particularly the villages and rural areas with less pressure on the water quality, biodiversity, landscape etc. in these areas. In addition more people will have the opportunity to work locally and possible switch to walking or cycling modes, thus reducing travel distances, traffic volumes and traffic emissions within positive benefits to air quality, climatic factors and human health.

4.3.21 The concentration of growth in the manner proposed by this strategy may lead to reduced levels of investment in the other areas which may have negative impacts on quality of life and the quality of the urban environment if there are higher levels of vacancy and reduced employment opportunities at these locations. The reduced population targets for towns outside the designated employment nodes may also hinder their ability to secure investment in waste water infrastructure in the future if there are lower levels of population and employment growth.

Planning Impacts Scenario Two

4.3.22 The concentration of growth in the manner proposed by this strategy will strengthen the economic position of these towns chosen as the main growth centres, underpinning further investment and making them more attractive places to live. The strategy may also lead to reduced levels of investment in the other areas which may have negative impacts on quality of life and the quality of the urban environment of those areas if there are higher levels of vacancy and reduced employment opportunities at these locations. The reduced population targets for some towns may also hinder their ability to secure investment in waste water infrastructure in the future if there are lower levels of population and employment growth.

4.3.23 Lower levels of development in the rural areas will help conserve the landscape and amenity of those areas, potentially making it more attractive for visitors.

Table 5.4: Scenario 2: Employment Towns - Population Targets				
	Census Population 2011	CDP 2014 2022 Target Population	Scenario 2 Population Target 2022	Scenario 2 Population Growth 2011 - 2022
Blarney Macroom MD				
Blarney	2,437	7,533	8,500	6463
Macroom	3,879	4,536	4,200	321
Total Main Towns	6,316	12,069	12,700	6784
Villages and Rural	37,082	37,904	37,273	191
Total East	43,398	49,973	49,973	6975

Scenario 3: Balanced Growth

- 4.3.24 In this scenario, significant growth is allocated across the main settlements with lower levels of growth in the villages and rural areas. The principle strength of this scenario lies in the balanced approach allowing for the majority of growth to take place in the main settlements but at the same time allowing for continued, more modest growth in the villages and rural areas, continuing to support the economies of these areas to underpin local services and quality of life. The pattern of population distribution in this scenario is more dispersed than in the other scenarios as it seeks to support all the main towns. However this is balanced with an employment strategy which seeks to bring people and jobs closer together either in the same settlement or by high quality transport links connecting settlements together.
- 4.3.25 In summary, within the Blarney Macroom MD, the majority of the growth is assigned to Blarney with more modest growth in the other main town of Macroom. Additional growth is also allocated to the villages and rural areas.

Environmental Impacts Scenario 3

- 4.3.26 The concentration of both population and employment growth in the main urban areas of the County would serve to reduce commuting patterns as more people would be afforded greater opportunities to live closer to their places of employment and/or travel using high quality public transport links. Such an approach would have a positive environmental effect by serving to reduce CO2 emissions and would enhance people's quality of life.
- 4.3.27 Focusing population growth across the settlement network will necessitate significant investment in water services infrastructure.
- 4.3.28 While allowing for growth in rural areas, this scenario will result in some negative impacts on the environment. It is unlikely that developments in rural area will be connected to public wastewater treatment networks. While not as significant on their own, the cumulative impact of rural development could have significant negative impacts both on biodiversity and particularly on water quality.
- 4.3.29 This scenario would still give rise to the growth of rural housing outside the settlement network which would contribute to further unsustainable commuting patterns and increased car dependency.

Planning Impacts Scenario 3

- 4.3.30 In common with the other scenarios, this scenario has a strong urban influence. It sets out population targets for the main settlements that, while ambitious, will ultimately help them perform their function as the primary growth centres in the county.
- 4.3.31 The scenario also recognises that there is a demand for growth in rural areas and provides for some additional growth in the key villages and lower order settlements in rural areas. Facilitating population growth in these areas would in turn encourage the retention of services in these locations. The scale of growth envisaged however is not of a scale that would serve to undermine the growth of the main urban centres in the county.

Table 5.5: Scenario 3: Balanced Growth - Population Targets

	Census Population 2011	CDP 2014 2022 Target Population	Scenario 3 Population Target 2022	Scenario 3 Population Growth 2011 - 2022
Blarney Macroom MD				
Blarney	2,437	7,533	7,533	5,096
Macroom	3,879	4,536	4,536	657
Total Main Towns	6,316	12,069	12,069	5,753
Villages and Rural	37,082	37,904	37,904	822
Total East	43,398	49,973	49,973	6575

4.4 Assessment of alternatives against the EPOs.

4.4.1 The evaluation of the three proposed alternatives scenarios for their respective impacts on the environment was undertaken utilising the Environmental Protection Objectives (EPOs), which are detailed below.

Table 4.1: List of Environmental Protection Objectives, Targets and Indicators		
Environmental Protection Objective	Targets	Indicators
<p>Population (P)</p> <p>EPO 1: To ensure the sustainable development of area so people have the opportunity to live in communities with high quality residential, working and recreational environments with sustainable travel patterns.</p>	<ul style="list-style-type: none"> • Deliver on the population target for the Municipal District, especially in the main towns. • Promote the economic development of the area. • Co-ordinate new housing development and the delivery of social and community infrastructure • Decrease journey time and distance travelled to work during the lifetime of the plan. • All large scale housing development to be accompanied by a Design Statement. 	<ul style="list-style-type: none"> • Significant change in the population of the main towns. • Distance and mode of transport to work/ school.
<p>Human Health (HH)</p> <p>EPO 2: To protect and enhance human health and manage hazards or nuisances arising from traffic & incompatible land uses.</p>	<ul style="list-style-type: none"> • Avoid incompatible development nears SEVESO sites or IPPC licensed sites • Ensure new development is well served with community facilities and facilitates walking and cycling routes. 	<ul style="list-style-type: none"> • No of planning permissions granted within the consultation distance of Seveso sites/IPPC facilities. • No of new primary health care/schools/crèches/ community facilities provided.

Table 4.1: List of Environmental Protection Objectives, Targets and Indicators

Environmental Protection Objective	Targets	Indicators
		<ul style="list-style-type: none"> Amount of (Km) new cycle ways provided.
<p>Biodiversity, Flora and Fauna (BFF)</p> <p>EPO 3: Throughout the county, conserve and restore ecosystems, habitats and species in their natural surroundings, and ensure their sustainable management, including the ecological corridors between them.</p>	<ul style="list-style-type: none"> Maintain the favourable conservation status of all habitats and species, especially those protected under national and international legislation. Implement the actions of the Cork County Biodiversity Action Plan. Establishment of a Green Infrastructure Strategy for the County Protect habitats from invasive species 	<ul style="list-style-type: none"> Number of developments receiving planning permission within designated sites or within the consultation distance of designated sites where the HDA process identified potential for impacts. Reduction in the quantum of greenfield land in the county as measured by the increase in the amount of brownfield land associated with each settlement and the no. of one off houses being built in the countryside. Number of actions achieved in Biodiversity Action Plan Progress on Green Infrastructure strategy
<p>Soil (S)</p> <p>EPO 4: Protect the function and quality of the soil resource in the Fermoy Municipal District</p>	<ul style="list-style-type: none"> Reduce the use of greenfield land by encouraging the reuse of brownfield sites. Encourage sustainable extraction of non-renewable sand, gravel and rock deposits and the reuse and recycling of construction and demolition waste. 	<ul style="list-style-type: none"> Number of brownfield sites that have been redeveloped. Volume of construction and demolition waste recycled. Reduction in number of vacant and derelict buildings.
<p>Water (W)</p> <p>EPO 5: Maintain and improve the quality of water resources</p>	<ul style="list-style-type: none"> To achieve at least 'good' status in all bodies of surface 	<ul style="list-style-type: none"> Trends in classification of overall status of surface water under

Table 4.1: List of Environmental Protection Objectives, Targets and Indicators

Environmental Protection Objective	Targets	Indicators
<p>and improve the management and sustainable use of these resources to comply with the requirements of the WFD.</p>	<p>waters (lakes rivers, transitional and coastal waters).</p> <ul style="list-style-type: none"> • Achieve compliance with Groundwater Quality Standards and Threshold Values under Directive 2006/118/EC (protection of groundwater). • Not to permit development where it would result in a WWTP exceeding the terms of its discharge license. • Encourage future population growth in areas served by urban waste water treatment plants and public water supplies. 	<p>Surface Water Regulations 2009 (SI No 272 of 2009)</p> <ul style="list-style-type: none"> • Trends in Classification of Bathing Waters as set by Directive 2006/7/EC. • Groundwater Quality Standards and Threshold Values under Directive 2006/118/EC. • No of households served by urban waste water treatment plants/ septic tanks/ individual WWTP or other systems. • No of households served by public water supplies. • Percentage of water unaccounted for.
<p>Air Quality and Climate Factors (AQ/C)</p> <p>EPO 6: Protect and improve air quality.</p> <p>EPO 7: Contribute to mitigation of, and adaptation to, climate change.</p>	<ul style="list-style-type: none"> • Ensure air quality monitoring results are maintained within appropriate emission limits. • Increase modal shift in favour of public transport, walking and cycling. • Encourage production and use of renewal energy. • Encourage energy efficiency in building design and 	<ul style="list-style-type: none"> • Trends in Air Quality monitoring data. • Percentage of population travelling to work by public transport, walking or cycling. • Number of wind turbines permitted. • Number of developments permitted within areas at risk of flooding.

Table 4.1: List of Environmental Protection Objectives, Targets and Indicators

Environmental Protection Objective	Targets	Indicators
	<p>construction.</p> <ul style="list-style-type: none"> • Provide flood protection measures where appropriate. • Avoid inappropriate development in areas of flood risk. 	
<p>Cultural Heritage (CH)</p> <p>EPO 8: Protect and, where appropriate, enhance the character, diversity and special qualities of architectural, archaeological and cultural heritage (including Gaeltachtaí) in County Cork.</p>	<ul style="list-style-type: none"> • No loss of or adverse impact on the fabric or setting of monuments on the Record of Monuments (RMP). • No loss of or adverse impact on the architectural heritage value or setting of protected structures. • No loss of or adverse impact on structures recorded on the National Inventory of Architectural Heritage. • Implement the Cork County Heritage Plan. 	<ul style="list-style-type: none"> • Loss of or adverse impact on monuments on the Record of Monuments (RMP). • Loss of or adverse impact on protected structures included on the RPS or structures included on the NIAH.
<p>Landscape (L)</p> <p>EPO 9: Protect and, where appropriate, enhance the character, diversity and special qualities of landscapes in County Cork.</p>	<ul style="list-style-type: none"> • No large scale development permitted in areas of high landscape value. 	<ul style="list-style-type: none"> • Number of large scale developments permitted in areas of high landscape value.
<p>Material Assets (MA)</p> <p>EPO 10: Make best use of the material assets of the area and promote the sustainable development of new infrastructure to provide for the current and future needs</p>	<ul style="list-style-type: none"> • Develop the road, rail and public transport infrastructure of the county to facilitate sustainable growth and travel patterns. 	<ul style="list-style-type: none"> • New critical infrastructural projects completed (projects identified by the CDP).

Table 4.1: List of Environmental Protection Objectives, Targets and Indicators

Environmental Protection Objective	Targets	Indicators
of the population.	<ul style="list-style-type: none"> • Ensure appropriate water services infrastructure is delivered in areas targeted for population growth. • Protect and optimise the use of the existing building stock. • Facilitate the sustainable expansion of production facilities to enable economic growth and create new employment opportunities. • Protect and enhance green infrastructure. • Protect existing recreational facilities and green infrastructure. 	
<p>Flooding (F) EPO 11: Protect flood plains and areas at risk of flooding from inappropriate development.</p>	<ul style="list-style-type: none"> • No inappropriate development permitted in areas at risk of flooding. • All applications in areas at risk to be accompanied by detailed a flood risk assessment. 	<ul style="list-style-type: none"> • Number and nature of developments permitted in areas at risk

4.4.2 The findings of the assessment of the alternatives against the EPOs are set out in Table 4.2 below.

Table 4.2. Alternative Scenarios interaction with Environmental Protection Objectives				
	Positive Interaction with status of EPOs	Negative Interaction with status of EPOs	Uncertain Interaction with status of EPOs	Neutral Interaction with status of EPOs
Scenario 1	EPO 2, 6, 7, 10	EPO 1, 3, 5	--	EPO 4, 8, 9, 11
Scenario 2	EPO 2, 6, 7, 10	EPO 1, 3, 5	--	EPO 4, 8, 9, 11
Scenario 3	EPO 1, 2, 6, 7, 10	--	--	EPO 4, 8, 9, 11

4.5 Preferred scenario.

- 4.5.1 Scenario 3 was the preferred scenario as it was the one that places the most emphasis on building on what has already been achieved within the county in terms of supporting the network of settlements, the established employment areas while continuing to support the development of villages and rural areas and it is therefore the preferred scenario, giving the most positive interaction for most of the population with EPO 1.
- 4.5.2 Scenarios 1 and 2 in promoting a more focused development pattern would inevitably lead to the decline and contraction of some of the other towns, villages and rural areas resulting in the loss of economic opportunities in those areas, reduced investment and an overall reduction in the quality of life for the people living in those areas.

5 Monitoring

5.1 Scope of SEA Monitoring

- 5.1.1 The SEA Directive requires that the significant environmental effects of the implementation of plans are monitored in order to identify, at an early stage, unforeseen adverse effects and to be able to undertake appropriate remedial action. Monitoring also allows for the cross checking of the significant environmental effects which arise during the implementation stage, against those predicted during the Plan Preparation Stage. In addition, monitoring can also play an important role in assessing whether the Local Area Plan is achieving its environmental objectives and targets, whether these need to be re-examined, and whether the proposed mitigation measures are being implemented.
- 5.1.2 Table 5.1 details the environmental protection objectives, targets and indicators included in the Environmental Report, which will form the basis for the monitoring of any significant environmental effects, and the likely source of information for the monitoring data.

Table 5.1: Monitoring of the Significant Environmental effects.			
Environmental Protection Objective	Targets	Indicators	Monitoring Provision -
<p>Population (P)</p> <p>EPO 1: To ensure the sustainable development of Blarney Maroom Municipal District so people have the opportunity to live in communities with high quality residential, working and recreational environments with sustainable travel patterns.</p>	<ul style="list-style-type: none"> • Deliver on the population target for the Municipal District, especially in the main towns. • Promote the economic development of the area. • Co-ordinate new housing development and the delivery of social and community infrastructure. • Decrease journey time and distance travelled to work during the lifetime of the plan. 	<ul style="list-style-type: none"> • Significant change in the population of the main towns. • Distance and mode of transport to work/ school. 	<ul style="list-style-type: none"> • Changes in population levels. • Number of houses built across the settlement network / in rural areas. • The change in modal share / distanced travelled to work over the Plan period. • The change in the level and frequency of public transport services at a settlement level . • Change in the

Table 5.1: Monitoring of the Significant Environmental effects.

Environmental Protection Objective	Targets	Indicators	Monitoring Provision -
	<ul style="list-style-type: none"> All large scale housing development to be accompanied by a Design Statement. 		<p>number of jobs in an area.</p> <ul style="list-style-type: none"> Scale of development permitted in villages.
<p>Human Health (HH)</p> <p>EPO 2: To protect and enhance human health and manage hazards or nuisances arising from traffic & incompatible land uses.</p>	<ul style="list-style-type: none"> Avoid incompatible development nears SEVESO sites or IPPC licensed sites. Ensure new development is well served with community facilities and facilitates walking and cycling routes. 	<ul style="list-style-type: none"> Number of planning permissions granted within the consultation distance of Seveso sites/IPPC facilities. Number of new primary health care/schools/crèches/ community facilities provided. Amount of (Km) new cycle ways provided. 	<ul style="list-style-type: none"> This information is capable of being abstracted from the planning register. This information is capable of being abstracted from the planning register. This information would need to be collated from other departments within the Council.
<p>Biodiversity, Flora and Fauna (BFF)</p> <p>EPO 3: Throughout the county, conserve and restore ecosystems, habitats and species in their natural surroundings,</p>	<ul style="list-style-type: none"> Maintain the favourable conservation status of all habitats and species, especially those protected under national and international legislation. Implement the actions of the Cork County Biodiversity 	<ul style="list-style-type: none"> Number of developments receiving planning permission within designated sites or within the consultation distance of designated sites where the HDA process identified potential for impacts. Reduction in the quantum of greenfield 	<ul style="list-style-type: none"> This information is capable of being abstracted from the planning register / odyssey system. This information may be

Table 5.1: Monitoring of the Significant Environmental effects.

Environmental Protection Objective	Targets	Indicators	Monitoring Provision -
and ensure their sustainable management, including the ecological corridors between them.	<p>Action Plan.</p> <ul style="list-style-type: none"> Establishment of a Green Infrastructure Strategy for the County Protect habitats from invasive species 	<p>land in the county as measured by the increase in the amount of brownfield land associated with each settlement and the no. of one off houses being built in the countryside.</p> <ul style="list-style-type: none"> Number of actions achieved in Biodiversity Action Plan. Progress on Green Infrastructure strategy. 	<p>available from the planning register/ odyssey system.</p> <ul style="list-style-type: none"> This information is available from the Council's Heritage Officer. This information will be available from within the Council.
<p>Soil (S)</p> <p>EPO 4: Protect the function and quality of the soil resource in the Fermoy Municipal District</p>	<ul style="list-style-type: none"> Reduce the use of greenfield land by encouraging the reuse of brownfield sites. Encourage sustainable extraction of non-renewable sand, gravel and rock deposits and the reuse and recycling of construction and demolition waste. 	<ul style="list-style-type: none"> No of brownfield sites that have been redeveloped. Volume of construction and demolition waste recycled. Reduction in number of vacant and derelict buildings. 	<ul style="list-style-type: none"> This information is not currently readily available but may be available from Odyssey in the future. This information may be available from the Environment Section. This information is not currently readily available but could be obtained via survey work.
<p>Water (W)</p> <p>EPO 5: Maintain</p>	<ul style="list-style-type: none"> To achieve at least 'good' 	<ul style="list-style-type: none"> Trends in classification of 	<ul style="list-style-type: none"> This information is

Table 5.1: Monitoring of the Significant Environmental effects.

Environmental Protection Objective	Targets	Indicators	Monitoring Provision -
<p>and improve the quality of water resources and improve the management and sustainable use of these resources to comply with the requirements of the WFD.</p>	<p>status in all bodies of surface waters (lakes rivers, transitional and coastal waters).</p> <ul style="list-style-type: none"> • Achieve compliance with Groundwater Quality Standards and Threshold Values under Directive 2006/118/EC (protection of groundwater). • Not to permit development where it would result in a WWTP exceeding the terms of its discharge license. • Encourage future population growth in areas served by urban waste water treatment plants and public water supplies. 	<p>overall status of surface water under Surface Water Regulations 2009 (SI No 272 of 2009).</p> <ul style="list-style-type: none"> • Trends in Classification of Bathing Waters as set by Directive 2006/7/EC. • Groundwater Quality Standards and Threshold Values under Directive 2006/118/EC. • No of households served by urban waste water treatment plants/ septic tanks/ individual WWTP or other systems. • No of households served by public water supplies. • % of water unaccounted for. 	<p>not readily available but may be available from EPA.</p> <ul style="list-style-type: none"> • This information is not readily available but may be available from EPA. • This information is not readily available but may be available from EPA. • Available from the CSO. • Available from the CSO. • This information may be available from Irish Water.
<p>Air Quality and Climate Factors (AQ/C)</p> <p>EPO 6: Protect and improve air</p>	<ul style="list-style-type: none"> • Ensure air quality monitoring results are maintained within 	<ul style="list-style-type: none"> • Trends in Air Quality monitoring data. • Percentage of population 	<ul style="list-style-type: none"> • Information may be available from EPA.

Table 5.1: Monitoring of the Significant Environmental effects.

Environmental Protection Objective	Targets	Indicators	Monitoring Provision -
<p>quality.</p> <p>EPO 7: Contribute to mitigation of, and adaptation to, climate change.</p>	<p>appropriate emission limits.</p> <ul style="list-style-type: none"> • Increase modal shift in favour of public transport, walking and cycling. • Encourage production and use of renewal energy. • Encourage energy efficiency in building design and construction. • Provide flood protection measures where appropriate. • Avoid inappropriate development in areas of flood risk. 	<p>travelling to work by public transport, walking or cycling.</p> <ul style="list-style-type: none"> • No of wind turbines permitted. • No of developments permitted within areas at risk of flooding. 	<ul style="list-style-type: none"> • Data can be extracted from the Census . • This information may be available from the planning register/ odyssey system. • This information may be available from the planning register/ odyssey system
<p>Cultural Heritage (CH)</p> <p>EPO 8: Protect and, where appropriate, enhance the character, diversity and special qualities of architectural, archaeological and cultural heritage</p>	<ul style="list-style-type: none"> • No loss of or adverse impact on the fabric or setting of monuments on the Record of Monuments (RMP). • No loss of or adverse impact on the architectural 	<ul style="list-style-type: none"> • Loss of or adverse impact on monuments on the Record of Monuments (RMP). • Loss of or adverse impact on protected structures included on the RPS or structures 	<ul style="list-style-type: none"> • This information may be available from the Odyssey system. • This information may be available from the Odyssey system.

Table 5.1: Monitoring of the Significant Environmental effects.

Environmental Protection Objective	Targets	Indicators	Monitoring Provision -
(including Gaeltachtaí) in County Cork.	<p>heritage value or setting of protected structures.</p> <ul style="list-style-type: none"> No loss of or adverse impact on structures recorded on the National Inventory of Architectural Heritage. Implement the Cork County Heritage Plan. 	<p>included on the NIAH.</p>	
<p>Landscape (L)</p> <p>EPO 9: Protect and, where appropriate, enhance the character, diversity and special qualities of landscapes in County Cork.</p>	<ul style="list-style-type: none"> No large scale development permitted in areas of high landscape value. 	<ul style="list-style-type: none"> Number of large scale developments permitted in areas of high landscape value. 	<ul style="list-style-type: none"> This information is capable of being abstracted from the planning register.
<p>Material Assets (MA)</p> <p>EPO 10: Make best use of the material assets of the area and promote the sustainable development of new infrastructure to provide for the current and future needs of the population.</p>	<ul style="list-style-type: none"> Develop the road, rail and public transport infrastructure of the county to facilitate sustainable growth and travel patterns. Ensure appropriate water services infrastructure is delivered in 	<ul style="list-style-type: none"> New critical infrastructural projects completed (projects identified by the CDP). 	<ul style="list-style-type: none"> Delivery of the Critical Infrastructure required as identified in the County Development Plan (Table 15.1 and 15.2 will be monitored under the monitoring process for the County Development Plan.

Table 5.1: Monitoring of the Significant Environmental effects.

Environmental Protection Objective	Targets	Indicators	Monitoring Provision -
	<p>areas targeted for population growth.</p> <ul style="list-style-type: none"> • Protect and optimise the use of the existing building stock. • Facilitate the sustainable expansion of production facilities to enable economic growth and create new employment opportunities. • Protect and enhance green infrastructure. • Protect existing recreational facilities and green infrastructure. 		
<p>Flooding (F) EPO 11: Protect flood plains and areas at risk of flooding from inappropriate development.</p>	<ul style="list-style-type: none"> • No inappropriate development permitted in areas at risk of flooding. • All applications in areas at risk to be accompanied by detailed a flood risk assessment. 	<ul style="list-style-type: none"> • Number and nature of developments permitted in areas at risk. 	<ul style="list-style-type: none"> • Number and nature of development permitted in areas at risk of flooding.

5.2 Monitoring of the Local Area Plan

- 5.2.1 While the Planning Acts require Planning Authorities to “ take such steps within its powers as may be necessary for securing the objectives of the Development Plan”, and the Chief Executive of the planning authority is required, not more than 2 years after the making of a Development Plan, to give a report to the elected members of the planning authority on the progress achieved in securing the objectives of the Development Plan, there are no such requirements in relation to a local area plan.
- 5.2.2 Nonetheless, given that the Local Area Plans is a key instrument for the implementation of the County Development Plan objectives, in particular the Core Strategy, it is very important that progress in the implementation of the Local Area Plans is monitored to facilitate the identification of any issues concerning implementation.
- 5.2.3 The Planning Directorate of Cork County Council is primarily responsible for monitoring and implementing the Local Area Plans, mainly through the development management function. It is important to note however, that implementation of the local area plan objectives also requires inputs from other key departments within the local authority, such as Economic Development, Roads, Environment, Housing and Community Development. In some cases, the body responsible for the implementation of certain plan objectives may be external, such as Transport Infrastructure Ireland, the National Transport Authority or Irish Water etc.
- 5.2.4 A possible list of key indicators for Monitoring was set out Appendix F of the Cork County Development Plan. Some or all of these indicators will be used to monitor the local area plans, subject to adequate resources being available. Sources of data from other organisations (TII, NTA, IW, ESRI, NESC and the CSO etc) which is readily available will also be used where appropriate to assess progress in implementing the plan. Some of the data required for monitoring will be obtained from other departments within the Council.
- 5.2.5 A monitoring strategy based on the Odyssey Planning Application Management System is currently being developed and it is intended that this will provide the main source of data along with other in house initiatives such as a Housing Land Availability Study, to monitor the plan. In addition to the indicators being monitored for SEA purposes the other key areas for monitoring include the pace of development across all settlements / rural areas and sectors (residential, business/ industrial, retail, community etc.) and the associated rate of take up of zoned land, the density of permitted housing developments and the location and type of houses being built etc., as outlined in Appendix F of the County Development Plan.

Appendix A

SEA Screening of the Proposed Further Modifications to the Material Amendments to the Draft Local Area Plan

SEA Screening of the Proposed Further Modifications to the Material Amendments to the Draft Blarney Macroom Municipal District Local Area Plan

The Proposed Material Amendments to the Draft Blarney Macroom Local Area Plan were placed on public display for a period of public consultation with the addendum to the Environmental Report and the supporting environmental assessments from the 2nd to the 30th of May, 2017.

A total of 20 submissions were received on the Material Amendments. These included submissions from members of the public and statutory consultees. Details of all the submissions received were detailed in the Chief Executive's Report to Members in June 2017. All submissions were summarised in that report and responded to by the Chief Executive.

That report also proposed a non material minor modifications as follows:

1. The submission from Transport Infrastructure Ireland (TII) [AMD20993186] requested that all national roads projects be correctly and clearly illustrated on the plan maps to ensure the routes are safeguarded and to assist the public in knowing the location and extent of the routes.

It is proposed therefore to insert some additional non material text into Section One of each plan under the heading of 'Traffic and Transport' as follows:

'The Council, in consultation with the Transport Infrastructure Ireland, will protect proposed national road route corridors where the route selection process has been completed/approved and where preferred route corridors have been identified. The line of these Route Protection Corridors is shown in Volume 3 LAP Map Browser which is accessible through www.corkcoco.ie'.

SEA Screening Conclusion:

Proposed further minor modifications will have a neutral impact as it does not involve any new material and is partly a restatement of objective TM 3-1 (National Road Network) from the Cork County Development Plan 2014 which was also subject to its own environmental assessments.

Habitats Directive Screening Report

Table of Contents

<i>Sub-Section</i>	<i>Page No.</i>
1 INTRODUCTION	64
1.1 CONTEXT	64
1.2 SUMMARY OF THE HABITATS DIRECTIVE ASSESSMENT PROCESS	65
1.3 HOW THIS REPORT WAS PREPARED	66
1.4 DATA SOURCES, GAPS AND LIMITATIONS	67
1.5 SCREENING METHODOLOGY	67
2 DESCRIPTION OF THE PLAN AREA AND PLAN	67
2.1 SECTION 1 INTRODUCTION	68
2.2 SECTION 2 LOCAL AREA STRATEGY	69
2.3 SECTION 3 MAIN TOWNS	69
2.4 SECTION 4 KEY VILLAGES	69
2.5 SECTION 5 VILLAGES, VILLAGE NUCLEI AND OTHER LOCATIONS	69
2.6 SECTION 6 PUTTING THE PLAN INTO PRACTICE	70
3 IDENTIFICATION OF NATURA 2000 SITES SUBJECT TO SCREENING	80
4 SUMMARY OF SCREENING ASSESSMENT	81
4.1 DRAFT PLAN STAGE	84
4.2 PROPOSED AMENDMENTS STAGE	86
4.3 FINAL CHANGES TO PLAN	88
5 HABITATS DIRECTIVE SCREENING CONCLUSION STATEMENT	89
6 REFERENCES	93
6.1 CORK COUNTY COUNCIL DOCUMENTS	93
6.2 NPWS SITE DATA	94
6.3 OTHER REFERENCES	94

1 Introduction

1.1 Context

This is the Habitats Directive Screening Report for the Blarney Macroom Municipal District Local Area Plan as adopted on 24th July 2017. In accordance with requirements of Articles 6(3) of the Habitats Directive as transposed into Part XAB of the Planning and Development (Amendment) Act 2010 (and subsequent amendments), the impacts of the policies and objectives of all statutory land use plans on certain sites that are designated for the protection of nature (known as Natura 2000 sites or European sites¹), must be assessed as an integral part of the process of drafting the plan. This is to determine whether or not the implementation of plan policies could have negative consequences for the habitats or plant and animal species for which these sites are designated. This assessment process is called a Habitats Directive Assessment (HDA) and must be carried out at all stages of the plan making process.

Habitats Directive Assessment is an iterative process which is intended to run parallel to and inform the plan making process. It involves analysis and review of draft policies as they emerge during each stage of plan making, to ensure that their implementation will not impact on sites designated for nature conservation, nor on the habitats or species for which they are designated. Within this process, regard is had to the potential for policies to contribute to impacts which on their own may be acceptable, but which could be significant when considered in combination with the impacts arising from the implementation of other plans or policies.

The process may result in the development of new policy areas and/or the modification or removal of certain policies to be presented in the final plan. The results of this analysis and review are presented in reports which are produced for each stage of the plan making process.

This report represents the final stage of the Habitats Directive Screening Assessment for the Blarney Macroom Municipal District Local Area Plan. It summarises how ecological considerations relating to the Natura 2000 network were integrated into each phase of the plan making process and contains a Habitats Directive Screening Conclusion Statement. This report should be read in conjunction with the Blarney Macroom Municipal District Local Area Plan, 2017 as adopted on 24th July 2017. Regard should also be had to

- the Habitats Directive Screening Report for the Draft Blarney Macroom Municipal District Local Area Plan (November 2016); and to
- the Habitats Directive Assessment Report for the Proposed Amendments to the Blarney Macroom Municipal District Local Area Plan (May 2017);
- Environmental Report for the draft Blarney Macroom Municipal District Local Area Plan (November 2016);and

¹ Natura 2000 sites include Special Areas of Conservation designated under the Habitats Directive and Special Protection Areas designated under the Birds Directive. Special Areas of Conservation are sites that are protected because they support particular habitats and/or plant and animal species that have been identified to be threatened at EU community level. Special Protection Areas are sites that are protected for the conservation of species of birds that are in danger of extinction, or are rare or vulnerable. Special Protection Areas may also be sites that are particularly important for migratory birds. Such sites include internationally important wetlands.

- Strategic Environmental Assessment Statement for the Blarney Macroom Municipal District Local Area Plan (July 2017).

A full list of all relevant planning documents is set out in the reference section of this document.

1.2 Summary of the Habitats Directive Assessment Process

Article 6(3) of the Habitats Directive identifies what is required in terms of assessment of plans and projects.

Habitats Directive Article 6(3)

Any plan or project not directly connected with or necessary to the management of the site but likely to have a significant effect thereon, either individually or in combination with other plans or projects, shall be subject to appropriate assessment of its implications for the site in view of the site's conservation objectives. In the light of the conclusions of the assessment of the implications for the site and subject to the provisions of paragraph 4, the competent national authorities shall agree to the plan or project only after having ascertained that it will not adversely affect the integrity of the site concerned and, if appropriate, after having obtained the opinion of the general public.

EU and National Guidance sets out two main stages to the assessment process which are as follows:

Stage One: Screening

The process which identifies what might be the likely impacts arising from a plan on a Natura 2000 site, either alone or in combination with other projects or plans, and considers whether these impacts are likely to be significant. No further assessment is required if no significant impacts on Natura 2000 sites are identified during the screening stage. The findings of the screening assessment are normally contained in a Habitats Directive Screening Report.

Stage Two: Appropriate Assessment

Where the possibility of significant impacts has not been discounted by the screening process, a more detailed assessment is required. This is called an Appropriate Assessment and involves the compilation of a Natura Impact Report by the Planning Authority which is a report of scientific evidence and data relating to European sites for which significant negative impacts have not been previously screened out. This is used to identify and classify any implications of the plan for these sites in view of their conservation objectives. The Appropriate Assessment must include a determination as to whether or not the plan or its proposed amendments would adversely affect the integrity of any European site or sites. The plan may be adopted if adverse effects on the integrity of European sites can be ruled out during the appropriate assessment process. The plan may not be adopted on foot of an Appropriate Assessment, if it is found that it will give rise to adverse impacts on one or more European sites, or if uncertainty remains in relation to potential impacts on one or more European sites.

Article 6(4) of the Directive sets out procedures to allow the adoption and implementation of plans despite a finding of adverse effects on one or more European sites.

Habitats Directive Article 6(4)

If, in spite of a negative assessment of the implications for the site and in the absence of alternative solutions, a plan or project must nevertheless be carried out for imperative reasons of overriding public interest, including those of a social or economic nature, the Member State shall take all compensatory measures necessary to ensure that the overall coherence of Natura 2000 is protected. It shall inform the Commission of the compensatory measures adopted.

EU and National Guidance identifies two further assessment stages which must be completed if it is determined that a plan must proceed for imperative reasons of overriding public interest, despite a finding that it will have adverse effects on the integrity of one or more European sites. These procedures can only be invoked where it has been shown that there are no alternative ways to implement the plan which avoid adverse effects on the integrity of one or more European sites. They are set out below.

Stage Three: Assessment of alternative solutions

In circumstances where the potential for a plan to give rise to adverse effects on the integrity of a European site or sites has not been ruled out during the appropriate assessment process, it can only be considered for authorisation where it is demonstrated that there are no alternative solutions and that there are imperative reasons of overriding public interest which can allow the plan or project to proceed. Stage three of a Habitats Directive Assessment involves the assessment of alternative solutions.

Stage Four: Assessment where no alternative solutions exist and where adverse impacts remain

In circumstances where it has been demonstrated that a plan must proceed for imperative reasons of overriding public interest (IROPI), and where it has been shown that there are no alternatives, compensatory measures must be put in place in advance of the implementation of the plan/project which ensure the coherence of the Natura 2000 network. Compensatory measures must compensate for the expected impact on the site. The fourth stage of the Habitats Directive Assessment process involves demonstrating that imperative reasons of overriding public interest exist, and the assessment of the compensatory measures which are proposed to be implemented. In every case in which a local authority envisages approving or proceeding with a plan or project on grounds of IROPI, the Minister for Arts, Heritage, Regional, Rural and Gaeltacht Affairs must be consulted.

1.3 How this Report Was Prepared

The approach taken in the making of this assessment follows European Communities, Assessment of plans and projects significantly affecting Natura 2000 sites, Methodological guidance on the provisions of Article 6(3) and (4) of the Habitats Directive 92/43/EEC, 2002, and on Local Government and Appropriate Assessment of Plans and Projects in Ireland, Guidance for Planning Authorities, 2009.

1.4 Data Sources, Gaps and Limitations

The information contained in this report is based on a desktop review of information relating to these sites and to the habitats and species that they support. References and data used are cited in the back of this report.

1.5 Screening Methodology

EU Guidelines (2001) set out a process for screening landuse plans, which involves four main steps as follows:

- Provide a description of the proposed plan.
- Identify relevant Natura 2000 sites, and compile information on their qualifying interests and conservation objectives.
- Identify the potential effects of the plan on the identified Natura 2000 sites.
- Assess the significance of any effects on identified Natura 2000 sites, having regard to potential for 'in combination' effects.

This process is applied to all proposed plans or projects except those which are directly connected with the necessary management of a Natura 2000 site or sites. This report follows the steps set out above.

2 Description of the Plan Area and Plan

The Blarney Macroom Municipal District covers an area of land in mid Cork extending to the Kerry border from just west of Ballincollig. It encompasses the main towns of Blarney and Macroom as well as fifty five smaller settlements including key villages, smaller villages and other settlements. The boundaries of the Municipal District are shown in **Figure 1**.

Figure 1: Cork Municipal District Areas



2.1 Section 1 Introduction

The Blarney Macroom Municipal District Local Area Plan is a strategic plan identifying where development is to be directed and how/where supporting infrastructure is to be provided within the plan area. The population targets for settlements within the district follow those set in the County Development Plan (2014). The plan identifies where development is proposed to be located through its zoning maps and corresponding policy objectives.

Section 1 of the plan sets out the overall plan context and the overall approach/key policies that will influence the preparation of the plan namely the:

- Role of the Cork County Development Plan 2014
- Approach to Town Development Plans
- Special Policy Area Framework Masterplans
- Settlement Network
- Infrastructure
- Water Services
- Development Contributions
- Regeneration Areas
- Flood Risk Assessment and Management
- Quality in Urban Design

- Green Belts around Towns
- Strategic Land Reserve and Active Land Management
- Environmental Assessments including:
 - Strategic Environmental Assessment,
 - Strategic Flood Risk Assessment and
 - Habitats Directive Assessment

2.2 Section 2 Local Area Strategy

This section sets out the overall strategy for the Blarney Macroom Municipal District. It sets out the housing requirements and zoned housing land supply for each of the main towns Macroom Environs and Blarney, and sets out the appropriate scale of growth within the village network and the current infrastructure position for all the main towns and smaller settlements within the settlement network. It describes the current employment position in the Municipal District and includes a description of environment and heritage assets within the area. The main message of this section of the plan is that sufficient land has been provided to meet population targets but that infrastructure remains a constraint to delivering on those targets.

2.3 Section 3 Main Towns

The purpose of this section is to set out the policies and objectives including land use zoning maps for the two main towns of Blarney and Macroom in the Blarney Macroom Municipal District. Where appropriate, Regeneration Areas have also been identified. This section of the plan sets out proposals for population growth and other development objectives for the main towns.

2.4 Section 4 Key Villages

There are seven large key villages in the Blarney Macroom Municipal District Ballineen/Enniskeane, Ballingearry, Ballymakeery/Ballyvourney, Coachford, Grenagh, Kilmurphy/Ovens and Tower.

This section of the plan sets out proposed scale of growth and other development objectives for each of these main villages over the lifetime of the plan.

2.5 Section 5 Villages, Village Nuclei and Other Locations

There are fifteen smaller villages, twenty five village nuclei and seven other locations in the Blarney Macroom Municipal District. The villages are Aghabullogue, Aherla, Cloghduv, Clondrohid, Courtbrack, Crookstown, Crossbarry, Inchigeelagh, Kilnamatyra, Kilmurphy, Model Village (Dripsey), Newcestown, Rylane/Seiscne and Stuake/Donoughmore and Upper Dripsey.

The village nuclei are Ballinacurra/Brinny, Ballinagree, Bealnamorive, Berrings, Canovee, Carrigadrohid/ Killinardrish, Carriganimmy, Cloghroe, Coolea, Farnanes, Farnivane, Firmount, Fornaght, Kilbarry, Knockavilla/ Old Chapel Cross, Lissarda, Lower Dripsey, Matehy, Murragh, New Tipperary, Reanannerree, Rusheen, Tooms, Toon Bridge and Upton.

The other locations are Bealnablath, Farran/Farran Lower, Gougane Barra, Gurrans, Inniscarra, Shrelane Cross and Waterloo. This section of the plan sets out proposed scale of growth and other development objectives for each of settlements over the lifetime of the plan.

2.6 Section 6 Putting the Plan into Practice

This section of the plan assigns responsibility for the implementation of the plan policies to various agencies including the Local Authority. It also sets out the expected timeframes for the delivery of physical and social infrastructure, including the assignment of plan priorities and funding streams necessary to secure key development objectives. It also outlines the approach to monitoring and how the plan will inform other Plans within its functional area.

3 Identification of Natura 2000 Sites Subject to Screening

Table 1 below sets out the Natura 2000 sites which are subject to screening in this report. It includes all Natura 2000 sites within the plan boundary area and Natura 2000 sites within 15km of the plan boundary. The habitats and species for which these sites are designated are also listed. The potential for Natura 2000 sites that are >15km from the plan boundary area to be affected by policies set out in the plan was also considered. This could include sites which are hydrologically connected to watercourses or water bodies within the plan boundary area. No such sites were identified. All relevant sites are identified in **Figure 2**.

Figure 2 Natura Sites Subject to Screening

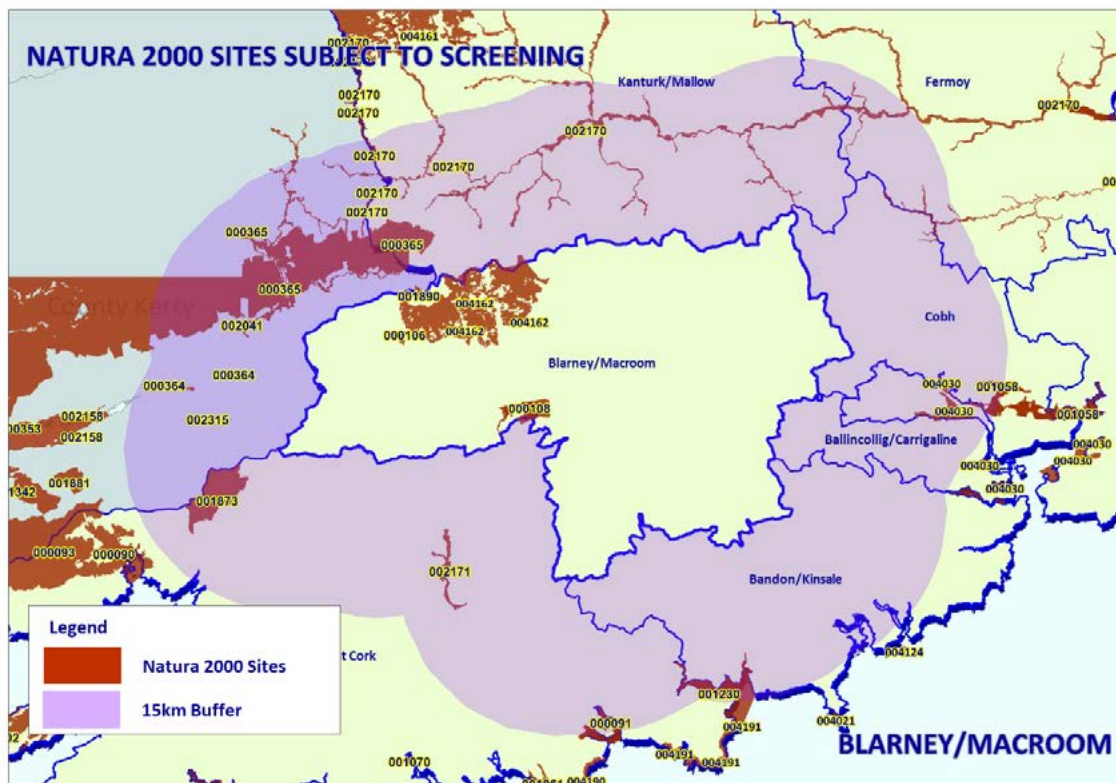


Table 1 All Natura Sites Within the Blarney-Macroom MD or otherwise identified as requiring to be subject to screening

Site Code	Site Name	Qualifying Interests	Conservation Objectives
0091	Clonakilty Bay SAC	<ul style="list-style-type: none"> Mudflats and sandflats not covered by seawater at low tide [1140] Annual vegetation of drift lines [1210] Embryonic shifting dunes [2110] Shifting dunes along the shoreline with <i>Ammophila arenaria</i> (white dunes) [2120] Fixed coastal dunes with herbaceous vegetation (grey dunes) [2130] Atlantic decalcified fixed dunes (Calluno-Ulicetea) [2150] 	<p>To maintain the favourable conservation condition of the following habitats for which the Clonakilty Bay SAC is designated:</p> <ul style="list-style-type: none"> Mudflats and sandflats not covered by seawater at low tide [1140]; Annual vegetation of drift lines [1210]; Embryonic shifting dunes [2110]; Shifting dunes along the shoreline with <i>Ammophila arenaria</i> (white dunes) [2120]; Atlantic decalcified fixed dunes (Calluno-Ulicetea) [2150]; and to restore the favourable conservation condition of Fixed coastal dunes with herbaceous vegetation (grey dunes) [2130] <p>which are defined by attributes and targets set out in NPWS Conservation Objectives for Clonakilty Bay SAC (May 2014) available at www.NPWS.ie</p>
0106	St. Gobnet's Wood SAC	<ul style="list-style-type: none"> Old sessile oak woods with <i>Ilex</i> and <i>Blechnum</i> in the British Isles [91A0] 	<p>To maintain or restore the favourable conservation condition of the Annex I habitat(s) and/or the Annex II species for which this SAC has been selected:</p> <ul style="list-style-type: none"> Old sessile oak woods with <i>Ilex</i> and <i>Blechnum</i> in the British Isles [91A0] <p>as set out in Conservation Objectives for St. Gobnet's Wood SAC (August 2016) available at www.NPWS.ie</p>
0108	The Gearagh SAC	<ul style="list-style-type: none"> Water courses of plain to montane levels with the <i>Ranunculion fluitantis</i> and <i>Callitricho-Batrachion</i> vegetation [3260] Rivers with muddy banks with <i>Chenopodium rubric</i> p.p. and <i>Biention</i> p.p. vegetation [3270] Old sessile oak woods with <i>Ilex</i> and <i>Blechnum</i> in the British Isles [91A0] 	<p>To maintain the favourable conservation condition of the following habitat and species:</p> <ul style="list-style-type: none"> Water courses of plain to montane levels with the <i>Ranunculion fluitantis</i> and <i>Callitricho-Batrachion</i> vegetation [3260] Rivers with muddy banks with <i>Chenopodium rubric</i> p.p. and <i>Biention</i> p.p. vegetation [3270] Old sessile oak woods with <i>Ilex</i> and <i>Blechnum</i> in the British Isles [91A0] Alluvial forests with <i>Alnus glutinosa</i> and

Table 1 All Natura Sites Within the Blarney-Macroom MD or otherwise identified as requiring to be subject to screening			
Site Code	Site Name	Qualifying Interests	Conservation Objectives
		<ul style="list-style-type: none"> Alluvial forests with <i>Alnus glutinosa</i> and <i>Fraxinus excelsior</i> (Alno-Padion, Alnion incanae, Salicion albae) [91E0] <i>Lutra lutra</i> (Otter) [1355] 	<p><i>Fraxinus excelsior</i> (Alno-Padion, Alnion incanae, Salicion albae) [91E0]</p> <ul style="list-style-type: none"> <i>Lutra lutra</i> (Otter) [1355] <p>which are defined by attributes and targets as set out in Conservation Objectives for the Gearagh SAC (September 2016) available at www.NPWS.ie</p>
0364	Kilgarvan Ice House SAC	<ul style="list-style-type: none"> <i>Rhinolophus hipposideros</i> (Lesser Horseshoe Bat) [1303] 	<p>To maintain or restore the favourable conservation condition of the Annex I habitat(s) and/or the Annex II species for which this SAC has been selected:</p> <ul style="list-style-type: none"> <i>Rhinolophus hipposideros</i> (Lesser Horseshoe Bat) [1303] <p>as set out in Conservation Objectives Kilgarvan Ice House SAC August 2016 available at www.NPWS.ie</p>
0365	Killarney National Park, Macgillycuddy Reeks and Caragh River Catchment SAC	<ul style="list-style-type: none"> Oligotrophic waters containing very few minerals of sandy plains (<i>Littorelletalia uniflorae</i>) [3110] Oligotrophic to mesotrophic standing waters with vegetation of the <i>Littorelletea uniflorae</i> and/or <i>Isoeto-Nanojuncetea</i> [3130] Water courses of plain to montane levels with the <i>Ranunculion fluitantis</i> and <i>Callitricho-Batrachion</i> vegetation [3260] Northern Atlantic wet heaths with <i>Erica tetralix</i> [4010] European dry heaths [4030] Alpine and Boreal heaths [4060] <i>Juniperus communis</i> formations on heaths or calcareous grasslands [5130] Calaminarian grasslands of the <i>Violetalia</i> 	<p>To maintain or restore the favourable conservation condition of the Annex I habitat(s) and/or the Annex II species for which this SAC has been selected:</p> <ul style="list-style-type: none"> Oligotrophic waters containing very few minerals of sandy plains (<i>Littorelletalia uniflorae</i>) [3110] Oligotrophic to mesotrophic standing waters with vegetation of the <i>Littorelletea uniflorae</i> and/or <i>Isoeto-Nanojuncetea</i> [3130] Water courses of plain to montane levels with the <i>Ranunculion fluitantis</i> and <i>Callitricho-Batrachion</i> vegetation [3260] Northern Atlantic wet heaths with <i>Erica tetralix</i> [4010] European dry heaths [4030] Alpine and Boreal heaths [4060] <i>Juniperus communis</i> formations on heaths or calcareous grasslands [5130] Calaminarian grasslands of the <i>Violetalia calaminariae</i> [6130] <i>Molinia</i> meadows on calcareous, peaty or clayey-silt-laden soils (<i>Molinion caeruleae</i>) [6410] Blanket bogs (* if active bog) [7130]

Table 1 All Natura Sites Within the Blarney-Macroom MD or otherwise identified as requiring to be subject to screening

Site Code	Site Name	Qualifying Interests	Conservation Objectives
		<ul style="list-style-type: none"> calaminariae [6130] • <i>Molinia</i> meadows on calcareous, peaty or clayey-silt-laden soils (Molinion caeruleae) [6410] • Blanket bogs (* if active bog) [7130] • Depressions on peat substrates of the Rhynchosporion [7150] • Old sessile oak woods with <i>Ilex</i> and <i>Blechnum</i> in the British Isles [91A0] • Alluvial forests with <i>Alnus glutinosa</i> and <i>Fraxinus excelsior</i> (Alno-Padion, Alnion incanae, Salicion albae) [91E0] • <i>Taxus baccata</i> woods of the British Isles [91J0] • <i>Geomalacus maculosus</i> (Kerry Slug) [1024] • <i>Margaritifera margaritifera</i> (Freshwater Pearl Mussel) [1029] • <i>Euphydrys aurinia</i> (Marsh Fritillary) [1065] • <i>Petromyzon marinus</i> (Sea Lamprey) [1095] • <i>Lampetra planeri</i> (Brook Lamprey) [1096] • <i>Lampetra fluviatilis</i> (River Lamprey) [1099] • <i>Salmo salar</i> (Salmon) [1106] • <i>Rhinolophus hipposideros</i> (Lesser Horseshoe Bat) [1303] • <i>Lutra lutra</i> (Otter) [1355] • <i>Trichomanes speciosum</i> (Killarney Fern) [1421] • <i>Najas flexilis</i> (Slender Naiad) [1833] • <i>Alosa fallax killarnensis</i> (Killarney Shad) [5046] 	<ul style="list-style-type: none"> • Depressions on peat substrates of the Rhynchosporion [7150] • Old sessile oak woods with <i>Ilex</i> and <i>Blechnum</i> in the British Isles [91A0] • Alluvial forests with <i>Alnus glutinosa</i> and <i>Fraxinus excelsior</i> (Alno-Padion, Alnion incanae, Salicion albae) [91E0] • <i>Taxus baccata</i> woods of the British Isles [91J0] • <i>Geomalacus maculosus</i> (Kerry Slug) [1024] • <i>Margaritifera margaritifera</i> (Freshwater Pearl Mussel) [1029] • <i>Euphydrys aurinia</i> (Marsh Fritillary) [1065] • <i>Petromyzon marinus</i> (Sea Lamprey) [1095] • <i>Lampetra planeri</i> (Brook Lamprey) [1096] • <i>Lampetra fluviatilis</i> (River Lamprey) [1099] • <i>Salmo salar</i> (Salmon) [1106] • <i>Rhinolophus hipposideros</i> (Lesser Horseshoe Bat) [1303] • <i>Lutra lutra</i> (Otter) [1355] • <i>Trichomanes speciosum</i> (Killarney Fern) [1421] • <i>Najas flexilis</i> (Slender Naiad) [1833] • <i>Alosa fallax killarnensis</i> (Killarney Shad) [5046] <p>as set out in Killarney National Park, Magillicuddy Reeks and Caragh River Catchment SAC Conservation Objectives (August 2016) available at www.NPWS.ie</p>
1058	Great Island Channel SAC	<ul style="list-style-type: none"> • Mudflats and sandflats not covered by seawater at low tide [1140] 	To maintain the favourable conservation condition of the following habitats for which the Barley Cove to Ballyrisode SAC is

Table 1 All Natura Sites Within the Blarney-Macroom MD or otherwise identified as requiring to be subject to screening			
Site Code	Site Name	Qualifying Interests	Conservation Objectives
		<ul style="list-style-type: none"> Atlantic salt meadows (Glauco-Puccinellietalia maritimae) [1330] 	<p>designated:</p> <ul style="list-style-type: none"> Mudflats and sandflats not covered by seawater at low tide [1140] <p>and to restore the favourable conservation condition of</p> <ul style="list-style-type: none"> Atlantic salt meadows (Glauco-Puccinellietalia maritimae) [1330] <p>which are defined by attributes and targets set out in Conservation Objectives for the Great Island Channel SAC June 2014 available at www.NPWS.ie</p>
1230	Courtmacsherry Estuary SAC	<ul style="list-style-type: none"> Estuaries [1130] Mudflats and sandflats not covered by seawater at low tide [1140] Annual vegetation of drift lines [1210] Perennial vegetation of stony banks [1220] <i>Salicornia</i> and other annuals colonising mud and sand [1310] Atlantic salt meadows (Glauco-Puccinellietalia maritimae) [1330] Mediterranean salt meadows (Juncetaliaaritime) [1410] Embryonic shifting dunes [2110] Shifting dunes along the shoreline with <i>Ammophila arenaria</i> (white dunes) [2120] Fixed coastal dunes with herbaceous vegetation (grey dunes) [2130] 	<p>To maintain the favourable conservation condition of the following habitats for which the Barley Cove to Ballyrisode SAC is designated:</p> <ul style="list-style-type: none"> Estuaries [1130] Mudflats and sandflats not covered by seawater at low tide [1140] Annual vegetation of drift lines [1210] Perennial vegetation of stony banks [1220] Mediterranean salt meadows (Juncetaliaaritime) [1410] Embryonic shifting dunes [2110] Shifting dunes along the shoreline with <i>Ammophila arenaria</i> (white dunes) [2120] Fixed coastal dunes with herbaceous vegetation (grey dunes) [2130] <p>and to restore the favourable conservation condition of</p> <ul style="list-style-type: none"> <i>Salicornia</i> and other annuals colonising mud and sand [1310] Atlantic salt meadows (Glauco-Puccinellietalia maritimae) [1330] <p>which are defined by attributes and targets set out in Conservation Objectives for Courtmacsherry Estuary SAC July 2014 available at www.NPWS.ie</p>

Table 1 All Natura Sites Within the Blarney-Macroom MD or otherwise identified as requiring to be subject to screening

Site Code	Site Name	Qualifying Interests	Conservation Objectives
1873	Derryclogher (Knockboy) Bog SAC	<ul style="list-style-type: none"> Blanket bogs (* if active bog) [7130] 	<p>To maintain or restore the favourable conservation condition of the Annex I habitat(s) and/or the Annex II species for which this SAC has been selected:</p> <ul style="list-style-type: none"> Blanket bogs (* if active bog) [7130] <p>as set out in the Conservation Objectives for Derryclogher (Knockboy) Bog SAC August 2016 available at www.NPWS.ie</p>
1890	Mullaghanish Bog SAC	<ul style="list-style-type: none"> Blanket bogs (* if active bog) [7130] 	<p>To maintain or restore the favourable conservation condition of the Annex I habitat(s) and/or the Annex II species for which this SAC has been selected:</p> <ul style="list-style-type: none"> Blanket bogs (* if active bog) [7130] <p>as set out in the Conservation Objectives for Mullaghanish Bog SAC August 2016 available at www.NPWS.ie</p>
2041	Old Domestic Building, Curraglass Wood SAC	<ul style="list-style-type: none"> <i>Rhinolophus hipposideros</i> (Lesser Horseshoe Bat) [1303] 	<p>To maintain or restore the favourable conservation condition of the Annex I habitat(s) and/or the Annex II species for which this SAC has been selected:</p> <ul style="list-style-type: none"> <i>Rhinolophus hipposideros</i> (Lesser Horseshoe Bat) [1303] <p>as set out in the Conservation Objectives for Old Domestic Building, Curraglass Wood SAC August 2016 available at www.NPWS.ie</p>
2170	Blackwater River (Cork/Waterford) SAC	<ul style="list-style-type: none"> Estuaries [1130] Mudflats and sandflats not covered by seawater at low tide [1140] Perennial vegetation of stony banks [1220] <i>Salicornia</i> and other annuals colonising mud and sand [1310] Atlantic salt meadows (<i>Glauco-Puccinellietalia maritimae</i>) [1330] Mediterranean salt meadows (<i>Juncetalia maritimi</i>) [1410] Water courses of plain to 	<p>To maintain the favourable conservation condition of the following habitats and species for which the Blackwater River SAC is designated:</p> <ul style="list-style-type: none"> <i>Austropotamobius pallipes</i> (White-clawed Crayfish) [1092] <i>Lampetra planeri</i> (Brook Lamprey) [1096] <i>Lampetra fluviatilis</i> (River Lamprey) [1099] <i>Salmo salar</i> (Salmon) [1106] Estuaries [1130] Mudflats and sandflats not covered by seawater at low tide [1140] Perennial vegetation of stony banks

Table 1 All Natura Sites Within the Blarney-Macroom MD or otherwise identified as requiring to be subject to screening

Site Code	Site Name	Qualifying Interests	Conservation Objectives
		<p>montane levels with the Ranunculion fluitantis and Callitricho-Batrachion vegetation [3260]</p> <ul style="list-style-type: none"> • Old sessile oak woods with <i>Ilex</i> and <i>Blechnum</i> in the British Isles [91A0] • Alluvial forests with <i>Alnus glutinosa</i> and <i>Fraxinus excelsior</i> (Alno-Padion, Alnion incanae, Salicion albae) [91E0] • <i>Taxus baccata</i> woods of the British Isles [91J0] • <i>Margaritifera margaritifera</i> (Freshwater Pearl Mussel) [1029] • <i>Austropotamobius pallipes</i> (White-clawed Crayfish) [1092] • <i>Petromyzon marinus</i> (Sea Lamprey) [1095] • <i>Lampetra planeri</i> (Brook Lamprey) [1096] • <i>Lampetra fluviatilis</i> (River Lamprey) [1099] • <i>Alosa fallax fallax</i> (Twaite Shad) [1103] • <i>Salmo salar</i> (Salmon) [1106] • <i>Lutra lutra</i> (Otter) [1355] • <i>Trichomanes speciosum</i> (Killarney Fern) [1421] 	<p>[1220]</p> <ul style="list-style-type: none"> • <i>Salicornia</i> and other annuals colonising mud and sand [1310] • Mediterranean salt meadows (<i>Juncetalia maritimi</i>) [1410] • <i>Trichomanes speciosum</i> (Killarney Fern) [1421] • Water courses of plain to montane levels with the Ranunculion fluitantis and Callitricho-Batrachion vegetation [3260] <p>and to restore the favourable conservation condition of</p> <ul style="list-style-type: none"> • <i>Margaritifera margaritifera</i> (Freshwater Pearl Mussel) [1029] • <i>Petromyzon marinus</i> (Sea Lamprey) [1095] • <i>Alosa fallax fallax</i> (Twaite Shad) [1103] • Atlantic salt meadows (<i>Glaucopuccinellietalia maritima</i>) [1330] • Old sessile oak woods with <i>Ilex</i> and <i>Blechnum</i> in the British Isles [91A0] • Alluvial forests with <i>Alnus glutinosa</i> and <i>Fraxinus excelsior</i> (Alno-Padion, Alnion incanae, Salicion albae) [91E0] • <i>Lutra lutra</i> (Otter) [1355] <p>which are defined by attributes and targets set out in Conservation Objectives for Blackwater River SAC July 2012 available at www.NPWS.ie</p> <p>*status of <i>Taxus baccata</i> woods of the British Isles as a qualifying feature for this SAC is currently under review.</p>
2171	Bandon River SAC	<ul style="list-style-type: none"> • Water courses of plain to montane levels with the Ranunculion fluitantis and Callitricho-Batrachion vegetation [3260] • Alluvial forests with <i>Alnus glutinosa</i> and <i>Fraxinus excelsior</i> (Alno-Padion, Alnion incanae, Salicion albae) [91E0] 	<p>To maintain or restore the favourable conservation condition of the Annex I habitat(s) and/or the Annex II species for which this SAC has been selected:</p> <ul style="list-style-type: none"> • Water courses of plain to montane levels with the Ranunculion fluitantis and Callitricho-Batrachion vegetation [3260] • Alluvial forests with <i>Alnus glutinosa</i>

Table 1 All Natura Sites Within the Blarney-Macroom MD or otherwise identified as requiring to be subject to screening

Site Code	Site Name	Qualifying Interests	Conservation Objectives
		<ul style="list-style-type: none"> • <i>Margaritifera margaritifera</i> (Freshwater Pearl Mussel) [1029] • <i>Lampetra planeri</i> (Brook Lamprey) [1096] 	<p>and <i>Fraxinus excelsior</i> (Alno-Padion, Alnion incanae, Salicion albae) [91E0]</p> <ul style="list-style-type: none"> • <i>Margaritifera margaritifera</i> (Freshwater Pearl Mussel) [1029] • <i>Lampetra planeri</i> (Brook Lamprey) [1096] <p>as set out in the Conservation Objectives for the Bandon River SAC August 2016 available at www.NPWS.ie</p>
2315	Glanlough Woods SAC	<ul style="list-style-type: none"> • <i>Rhinolophus hipposideros</i> (Lesser Horseshoe Bat) [1303] 	<p>To maintain or restore the favourable conservation condition of the Annex I habitat(s) and/or the Annex II species for which this SAC has been selected:</p> <ul style="list-style-type: none"> • <i>Rhinolophus hipposideros</i> (Lesser Horseshoe Bat) [1303] <p>as set out in the Conservation Objectives Glanlough Woods SAC August 2016 which are available at www.NPWS.ie</p>
4030	Cork Harbour SPA	<ul style="list-style-type: none"> • Little Grebe (<i>Tachybaptus ruficollis</i>) [A004] • Great Crested Grebe (<i>Podiceps cristatus</i>) [A005] • Cormorant (<i>Phalacrocorax carbo</i>) [A017] • Grey Heron (<i>Ardea cinerea</i>) [A028] • Shelduck (<i>Tadorna tadorna</i>) [A048] • Wigeon (<i>Anas penelope</i>) [A050] • Teal (<i>Anas crecca</i>) [A052] • Pintail (<i>Anas acuta</i>) [A054] • Shoveler (<i>Anas clypeata</i>) [A056] • Red-breasted Merganser (<i>Mergus serrator</i>) [A069] • Oystercatcher (<i>Haematopus ostralegus</i>) [A130] • Golden Plover (<i>Pluvialis apricaria</i>) [A140] 	<p>To maintain the favourable conservation condition of the following bird species in Cork Harbour SPA:</p> <ul style="list-style-type: none"> • Little Grebe (<i>Tachybaptus ruficollis</i>) [A004] • Great Crested Grebe (<i>Podiceps cristatus</i>) [A005] • Cormorant (<i>Phalacrocorax carbo</i>) [A017] • Grey Heron (<i>Ardea cinerea</i>) [A028] • Shelduck (<i>Tadorna tadorna</i>) [A048] • Wigeon (<i>Anas penelope</i>) [A050] • Teal (<i>Anas crecca</i>) [A052] • Pintail (<i>Anas acuta</i>) [A054] • Shoveler (<i>Anas clypeata</i>) [A056] • Red-breasted Merganser (<i>Mergus serrator</i>) [A069] • Oystercatcher (<i>Haematopus ostralegus</i>) [A130] • Golden Plover (<i>Pluvialis apricaria</i>) [A140] • Grey Plover (<i>Pluvialis squatarola</i>) [A141] • Lapwing (<i>Vanellus vanellus</i>) [A142] • Dunlin (<i>Calidris alpina</i>) [A149]

Table 1 All Natura Sites Within the Blarney-Macroom MD or otherwise identified as requiring to be subject to screening

Site Code	Site Name	Qualifying Interests	Conservation Objectives
		<ul style="list-style-type: none"> • Grey Plover (<i>Pluvialis squatarola</i>) [A141] • Lapwing (<i>Vanellus vanellus</i>) [A142] • Dunlin (<i>Calidris alpina</i>) [A149] • Black-tailed Godwit (<i>Limosa limosa</i>) [A156] • Bar-tailed Godwit (<i>Limosa lapponica</i>) [A157] • Curlew (<i>Numenius arquata</i>) [A160] • Redshank (<i>Tringa totanus</i>) [A162] • Black-headed Gull (<i>Chroicocephalus ridibundus</i>) [A179] • Common Gull (<i>Larus canus</i>) [A182] • Lesser Black-backed Gull (<i>Larus fuscus</i>) [A183] • Common Tern (<i>Sterna hirundo</i>) [A193] • Wetland and Waterbirds [A999] 	<ul style="list-style-type: none"> • Black-tailed Godwit (<i>Limosa limosa</i>) [A156] • Bar-tailed Godwit (<i>Limosa lapponica</i>) [A157] • Curlew (<i>Numenius arquata</i>) [A160] • Redshank (<i>Tringa totanus</i>) [A162] • Black-headed Gull (<i>Chroicocephalus ridibundus</i>) [A179] • Common Gull (<i>Larus canus</i>) [A182] • Lesser Black-backed Gull (<i>Larus fuscus</i>) [A183] • Common Tern (<i>Sterna hirundo</i>) [A193] <p>and</p> <ul style="list-style-type: none"> • to maintain the favourable conservation condition of the wetland habitat in Cork Harbour SPA as a resources for the regularly-occurring migratory birds that utilise it <p>as defined by attributes and targets set out in Conservation Objectives Cork Harbour SPA (Dec 2014) which are available at www.NPWS.ie</p>
4038	Killarney National Park SPA	<ul style="list-style-type: none"> • Merlin (<i>Falco columbarius</i>) [A098] • Greenland White-fronted Goose (<i>Anser albifrons flavirostris</i>) [A395] 	<p>To maintain or restore the favourable conservation condition of bird species listed as Special Conservation Interests for this SPA:</p> <ul style="list-style-type: none"> • Merlin (<i>Falco columbarius</i>) [A098] • Greenland White-fronted Goose (<i>Anser albifrons flavirostris</i>) [A395] <p>as set out in the Conservation Objectives for Killarney National Park SPA August 2016 are available at www.NPWS.ie</p>
4081	Clonakilty Bay SPA	<ul style="list-style-type: none"> • Shelduck (<i>Tadorna tadorna</i>) [A048] • Dunlin (<i>Calidris alpina</i>) [A149] • Black-tailed Godwit (<i>Limosa limosa</i>) [A156] • Curlew (<i>Numenius arquata</i>) [A160] • Wetland and Waterbirds 	<p>To maintain the favourable conservation condition of the following bird species in Clonakilty Bay SPA:</p> <ul style="list-style-type: none"> • Shelduck (<i>Tadorna tadorna</i>) [A048] • Dunlin (<i>Calidris alpina</i>) [A149] • Black-tailed Godwit (<i>Limosa limosa</i>) [A156] • Curlew (<i>Numenius arquata</i>) [A160]

Table 1 All Natura Sites Within the Blarney-Macroom MD or otherwise identified as requiring to be subject to screening			
Site Code	Site Name	Qualifying Interests	Conservation Objectives
		[A999]	<p>and</p> <ul style="list-style-type: none"> to maintain the favourable conservation condition of the wetland habitat in Clonakilty Bay SPA as a resource for the regularly-occurring migratory birds that utilise it <p>as defined by attributes and targets set out in Conservation Objectives Clonakilty Bay SPA Oct 2014 which are available at www.NPWS.ie</p>
4109	The Gearagh SPA	<ul style="list-style-type: none"> Wigeon (<i>Anas penelope</i>) [A050] Teal (<i>Anas crecca</i>) [A052] Mallard (<i>Anas platyrhynchos</i>) [A053] Coot (<i>Fulica atra</i>) [A125] Wetland and Waterbirds [A999] 	<p>To maintain or restore the favourable conservation condition of bird species listed as Special Conservation Interests for this SPA:</p> <ul style="list-style-type: none"> Wigeon (<i>Anas penelope</i>) [A050] Teal (<i>Anas crecca</i>) [A052] Mallard (<i>Anas platyrhynchos</i>) [A053] Coot (<i>Fulica atra</i>) [A125] <p>and</p> <ul style="list-style-type: none"> to maintain or restore the favourable condition of the wetland habitat at the Gearagh as a resource for the regularly-occurring migratory waterbirds that utilise it <p>as set out in the Conservation Objectives for the Gearagh SPA (August 2016) which are available at www.NPWS.ie</p>
4162	Mullaghanish to Musheramore Mountains SPA	<ul style="list-style-type: none"> Hen Harrier (<i>Circus cyaneus</i>) [A082] 	<p>To maintain or restore the favourable conservation condition of bird species listed as Special Conservation Interests for this SPA:</p> <p>Hen Harrier (<i>Circus cyaneus</i>) [A082] as set out in the Conservation Objectives for the Mullaghanish to Musheramore Mountains SPA (August 2016) which are available at www.NPWS.ie</p>

Table 1 All Natura Sites Within the Blarney-Macroom MD or otherwise identified as requiring to be subject to screening

Site Code	Site Name	Qualifying Interests	Conservation Objectives
4219	Courtmacsherry Bay SPA	<ul style="list-style-type: none"> • Great Northern Diver (<i>Gavia immer</i>) [A003] • Shelduck (<i>Tadorna tadorna</i>) [A048] • Wigeon (<i>Anas penelope</i>) [A050] • Red-breasted Merganser (<i>Mergus serrator</i>) [A069] • Golden Plover (<i>Pluvialis apricaria</i>) [A140] • Lapwing (<i>Vanellus vanellus</i>) [A142] • Dunlin (<i>Calidris alpina</i>) [A149] • Black-tailed Godwit (<i>Limosa limosa</i>) [A156] • Bar-tailed Godwit (<i>Limosa lapponica</i>) [A157] • Curlew (<i>Numenius arquata</i>) [A160] • Black-headed Gull (<i>Chroicocephalus ridibundus</i>) [A179] • Common Gull (<i>Larus canus</i>) [A182] • Wetland and Waterbirds [A999] 	<p>To maintain the favourable conservation condition of the following bird species in Courtmacsherry Bay SPA:</p> <ul style="list-style-type: none"> • Great Northern Diver (<i>Gavia immer</i>) [A003] • Shelduck (<i>Tadorna tadorna</i>) [A048] • Wigeon (<i>Anas penelope</i>) [A050] • Red-breasted Merganser (<i>Mergus serrator</i>) [A069] • Golden Plover (<i>Pluvialis apricaria</i>) [A140] • Lapwing (<i>Vanellus vanellus</i>) [A142] • Dunlin (<i>Calidris alpina</i>) [A149] • Black-tailed Godwit (<i>Limosa limosa</i>) [A156] • Bar-tailed Godwit (<i>Limosa lapponica</i>) [A157] • Curlew (<i>Numenius arquata</i>) [A160] • Black-headed Gull (<i>Chroicocephalus ridibundus</i>) [A179] • Common Gull (<i>Larus canus</i>) [A182] <p>and</p> <ul style="list-style-type: none"> • to maintain the favourable conservation condition of the wetland habitat in Courtmacsherry Bay SPA as a resources for the regularly-occurring migratory birds <p>that utilise it as defined by attributes and targets set out in Conservation Objectives Courtmacsherry Bay SPA Oct 2014 which are available at www.NPWS.ie</p>

4 Summary of Plan Making and Screening Assessment

A summary of the plan making process including the timelines which were followed is set out in **Table 2** below. Details of the Habitats Directive screening assessments and outcomes completed at each stage of the plan making process are set out in sections 4.1-4.3.

Table 2: Summary of Plan Making Process Incorporating Habitats Directive Assessment

Date	Stage	How issues relating to biodiversity and the protection of the Natura 2000 network were considered.
2015	<p>Council prepared a Consultation document (Section 20(1) Consultation Document) which identified the critical planning issues and choices to be made to facilitate the future development of the main settlements within the Municipal District.</p> <p>This document identified key planning issues within the Municipal District and proposed specific approaches to zoning and rezoning and provision of required infrastructure to support development within the main towns and other settlements.</p>	
December 2015- January 2016	<p>Council published first consultation document (Section 20(1) Consultation Document).</p> <p>Submissions on this document were invited from the public between 14th December to Monday 25th January 2016.</p> <p>A total of 61 submissions were made in respect of the preliminary consultation document including a number which raised issues in relation to the protection of natural heritage resources generally at a county wide level.</p>	<p>A number of the submissions raised issues relating to the protection of Natura 2000 sites and biodiversity generally at county level. There were no submissions which raised plan area specific issues relating to biodiversity or Habitats Directive Assessment.</p>
January – November 2016	<p>Council prepared the draft Blarney Macroom MD Local Area Plan taking account of the public submissions made during the first public consultation process.</p>	<p>Prior to publication, the draft plan was screened to determine whether its objectives could have the potential to give rise to significant impacts on the Natura 2000 network. The results of the assessment were compiled into the Habitats Directive Screening Report for the draft Plan (November 2016).</p> <p>The Habitats Directive Screening Report included recommendations that a number of modifications to be made to</p>

Table 2: Summary of Plan Making Process Incorporating Habitats Directive Assessment

Date	Stage	How issues relating to biodiversity and the protection of the Natura 2000 network were considered.
		the plan to ensure compliance with the Habitats and Birds Directives.
November 2016 – January 2017	<p>The draft plan was published and put on public display on the 16th November 2016.</p> <p>Submissions were invited to be made on the draft plan extending to 16th January 2017.</p>	The Habitats Directive Screening Report was also published and made available for public consultation during this period.
January-April 2017	<p>A total of 109 submissions were received in relation to the draft plan including a number made in respect of HDA or biodiversity issues generally at a County wide level.</p> <p>All submissions were reviewed and considered by the planning policy team. The submissions were summarised in the Chief Executive’s Report (published 6th March). There were no submissions which raised issues of concern in relation to any particular Natura 2000 site, or to plan specific Habitats Directive Assessment issues.</p> <p>The Chief Executive’s Report included recommendations to Council members as to what amendments should be made to the plan. These recommendations related to amendments arising from consideration of submissions made by members of the public and statutory authorities, amendments arising from the SEA and Habitats Directive screening of the draft plan, as well as amendments proposed to correct errors or omissions identified following publication of the draft plan.</p> <p>Council members proposed the making of 73 amendments to the plan following consideration of the Chief Executive’s Report.</p>	<p>The proposed amendments as agreed by Council members following consideration of the Chief Executive’s Report, were subject to Habitats Directive screening assessment process. A Habitats Directive Screening Report was prepared in respect of same.</p> <p>None of the proposed amendments as published were identified to be likely to pose a possible risk of impact on any Natura 2000 site.</p>
May 2017	Proposed amendments to the Draft Plan were	The Habitats Directive Screening Report

Table 2: Summary of Plan Making Process Incorporating Habitats Directive Assessment

Date	Stage	How issues relating to biodiversity and the protection of the Natura 2000 network were considered.
	<p>published.</p> <p>Submissions were invited to be made on the proposed amendments between 2nd and 30th May 2017.</p>	<p>for the proposed amendments was published and made available for public consultation during this period.</p>
June – July 2017	<p>A total of 20 submissions were received in relation to the proposed amendments.</p> <p>Issues raised in the submissions received in relation to the proposed amendments were summarised in the Chief Executives (Section Report (published June 16th) with recommendations in relation to same. None of these raised issues relating to Natura 2000 sites or to Habitats Directive Assessment.</p> <p>A minor modification was recommended to be made to amendments of the plan arising from a review of the submissions. It was also recommended by the CE that one amendment would be excluded from the plan.</p>	<p>The modifications which were proposed to be made to the amendments were screened to determine whether these had implications for the Natura 2000 network. In addition, consideration was given to the amendments recommended to be excluded, to determine whether their omission from the plan could have negative consequences for any Natura 2000 site.</p> <p>No implications for the Natura 2000 network were identified in relation to any of the recommendations which were contained in the Chief Executives Report of June 16th.</p>
24 th July 2017	<p>All proposed amendments as published in May 2017 were agreed to be made by the Council. These included the amendment which was recommended by the Chief Executive to be excluded from the plan.</p> <p>Members agreed on (24th July date) to make the minor modifications to the proposed amendments as recommended in the Chief Executives Report.</p>	<p>Final changes to be made to the plan (the minor modifications to amendments) were screened to determine whether these might have negative implications for the Natura 2000 network. No implications for the Natura 2000 network were identified to be likely to arise from the final changes agreed to be made to the plan.</p>
21 st August	<p>The Blarney Macroom Municipal District Local Area Plan was published.</p>	<p>A final Habitats Directive Screening Report (this report) which contains a summary of each phase of the Habitats Directive screening process and a Habitats Directive Screening Conclusion Statement in respect of the plan as</p>

Table 2: Summary of Plan Making Process Incorporating Habitats Directive Assessment

Date	Stage	How issues relating to biodiversity and the protection of the Natura 2000 network were considered.
		adopted was published with the Local Area Plan.

4.1 Draft Plan Stage

A preliminary screening assessment of the draft plan was completed in respect of all of the sites identified in Table 1 above. That assessment explored whether there might be possible pathways for impact between the identified Natura sites, and the towns, villages and other settlements of the Municipal District for which policy was proposed in the draft plan.

The preliminary assessment resulted in the ‘screening out’ of a number of Natura 2000 sites set out below. No ecological or hydrological linkages connecting towns or settlements within the Municipal District to these Natura 2000 sites was identified. Furthermore, these sites were considered to be sufficiently distant from any towns or other settlements to ensure that they were unlikely to suffer increased recreational or other pressure arising from policies contained in the plan. Consequently it was considered that there was no potential for policies in the plan to affect these sites.

Code	Site Name
0091	Clonakilty Bay SAC
0364	Kilgarvan Ice House SAC
0365	Killarney National Park, Macgillicuddy Reeks and Caragh River Catchment SAC
1058	Great Island Channel SAC
1230	Courtmacsherry Estuary SAC
1873	Derryclogher (Knockboy) Bog SAC
1890	Mullaghanish Bog SAC
2041	Old Domestic Building, Curraglass Wood SAC
2170	Blackwater River SAC
2171	Bandon River SAC
2315	Glanlough Woods SAC
4038	Killarney National Park SPA
4081	Clonakilty Bay SPA
4219	Courtmacsherry Bay SPA

The preliminary assessment identified possible pathways for impact between the remaining Natura sites as listed in **Table 1** and towns, villages and other settlements for which policy was proposed in the draft plan. Pathways for possible impact were identified where there were direct physical or

hydrological linkages between Natura 2000 sites and certain towns and villages, or where Natura 2000 sites were considered to be sufficiently close to expanding urban centres and where the possibility of increased recreational or other pressure was identified to be a potential risk. Having regard to this connectivity, it was considered appropriate to carry out a more detailed screening assessment in respect of these sites. Objectives were examined having regard to these sites to see whether they could have the potential to give rise to

- direct loss of habitat within any Natura 2000 site;
- indirect impacts on any Natura 2000 site which could affect quality of habitats within any Natura 2000 site;
- disturbance to species for which any Natura 2000 site is designated;
- a reduction in richness or density of species for which any Natura 2000 site is designated;
- negative changes in indicators of conservation value (eg water quality) in any Natura 2000 site.

This assessment looked at settlement specific policies and considered whether these were compatible with the protection of the identified sites.

On foot of this assessment potential implications for two further Natura 2000 sites were ruled out. These were the Cork Harbour SPA and the Mullaghanish to Musheramore SPA. Full details of the screenings for these sites are included in the screening report completed for the draft plan.

Recommendations were made in the screening report for modifications to be made to the draft plan in order to minimise risk of impact on three identified Natura sites – St. Gobnet’s Wood SAC (0106), the Gearagh SAC (0108) and the Gearagh SPA (4109). The recommendations are summarised in **Table 3** below.

Table 3: Summary of recommendations arising from screening assessment of draft plan

Site	Details	Recommendation
St. Gobnet’s Wood SAC	A significant portion of St. Gobnet’s Wood lies within the settlement boundary of Ballymakeery/Ballyvourney. Most of the area is zoned as Open Space and the objective for this zone is to protect the unique heritage and amenity value of the woodland. However, small sections of SAC woodland lie within the area described to be existing built up area. This description of SAC land could result in land within the SAC coming under pressure to be developed.	It was recommended that SAC lands would be designated as Open Space, not suitable for development.

Table 3: Summary of recommendations arising from screening assessment of draft plan

Site	Details	Recommendation
The Gearagh SAC and the Gearagh SPA	<p>There are a number of small settlements located within the catchment of the Gearagh. Responsible management of surface waters will be important to ensuring that new development in these settlements will not result in increased levels of surface water run off to rivers and streams flowing into the Gearagh. It was considered on assessment that objectives relating to villages and other settlements was not sufficiently clear in relation to this issue.</p> <p>The settlements of Ballingeary and Inchigeelagh are serviced by public wastewater treatment systems which discharge to the River Lee. There are issues relating to license compliance associated with the Ballingeary plant and waste water is being discharged untreated from the Inchigeelagh settlement. Both plants are observed to be having negative effects on water quality in the Lee which could have the potential to have negative consequences on water quality in the Gearagh.</p>	<p>It was recommended that policy relating to surface water management for key villages would be strengthened.</p> <p>It was recommended that policy relating to wastewater and protection of this site would be clarified in the plan to ensure that it is made clear that issues relating to compliance with license conditions and protection of water quality must be addresses (as well as capacity issues) to ensure that new development in settlements linked to the Gearagh catchment do not have a negative impact on the SAC or on the SPA.</p>

All of these recommendations were included in the Chief Executive’s Report to Council Members (March 6th), were accepted by Council, and amendments were proposed to be made to the plan to deal with same (see Table 4 below).

4.2 Proposed Amendments Stage

A total of 109 submissions were received in respect of the draft plan. Following consideration of all submissions and deliberations of Council Members, a total of 73 amendments were proposed to be made to the Local Area Plan. These amendments responded to

- observations made in public consultation submissions;
- the recommendations made arising from the Habitats Directive Screening Assessment of the Draft Plan (see Table 4); and
- were proposed to be made to correct errors identified following publication of the draft plan.

None of the submissions raised issues of concern in respect of any plan specific Natura 2000 site or

in respect of the Habitats Directive Assessment process. A full listing of the submissions and proposed amendments is available in the Proposed Amendments to the Draft Local Area Plan Report (May 2017).

Table 4: Proposed amendments responding to recommendations of the Habitats Directive Screening Assessment of the Draft Plan and to Public Submissions on draft Plan

BM.04.04.03. Change to amend the boundary of the settlement of Ballyvourney to exclude areas of the SAC from occurring within the settlement. Change to incorporate areas of SAC retained within the settlement boundary of Ballyvourney into the O-01 zone.
BM.02.07.03 Amendment to LAS-01(a) to clarify and standardise policy relating to surface and wastewater management applying to all settlements within the plan area.

All of the proposed amendments were subject to screening to determine whether any of these had potential to give rise to negative impacts on any Natura 2000 site. The screening assessment was made taking account of the Natura 2000 sites identified and described in **Table 1**. The main focus of the assessment was to identify whether the proposed amendments might

- increase pressure for development within or near these sites;
- encourage or facilitate increased levels of human activity within or near these sites; or
- increase pressure on key resources such as water quality within these sites.

Table 5 below summarises the findings of the assessment of the proposed amendments as published. Full details of the assessment process can be reviewed in the Habitats Directive Screening Report for the Proposed Amendments.

Table 5: Summary of Outcome of Screening of Proposed Amendments

Issues Examined	y/n	Amendment Ref. No	Relevant Settlement	EU site which may be impacted	Details of proposed amendment	Potential Impact
Proposed new zonings within Natura 2000 sites.	None	n/a	n/a	n/a	n/a	n/a
Proposed new zonings adjacent to Natura 2000 sites.	None	n/a	n/a	n/a	n/a	n/a
Proposed amendments facilitating increased	None	n/a	n/a	n/a	n/a	n/a

Table 5: Summary of Outcome of Screening of Proposed Amendments

Issues Examined	y/n	Amendment Ref. No	Relevant Settlement	EU site which may be impacted	Details of proposed amendment	Potential Impact
population targets within sensitive Natura catchments.						
Proposed amendments which could increase levels of human activity within or near Natura 2000 sites.	None	n/a	n/a	n/a	n/a	n/a
Other amendments that may give rise to impacts on Natura 2000 sites.	None	n/a	n/a	n/a	n/a	n/a

No issues of concern were identified at this stage of the process.

4.3 Final Changes to Plan

A total of 20 submissions were made in respect of the proposed amendments to the draft plan. A summary of the submissions was compiled into the Chief Executives Report (published 16th June), which also included recommendations as to how these should be dealt with.

None of the submissions raised issues of concern in relation to any Natura 2000 site or in relation to the Habitats Directive Assessment process.

Two modifications were recommended to be made to respond to submissions, and these recommendations were accepted by Council Members. Modifications were made as follows:

- Insertion of non material text into Section One of the plan under the heading of Traffic and Transport highlighting the fact that Route Protection Corridors will be shown on the Map Browser – (Amendment Ref BM 01.07.08)
- Modification to Table 3.6 involves the removal of a reference to the ‘developer’ being responsible for delivery for a new road linking the Blarney Link Road to Station Road, to ensure consistency with other similar policies in the plan (Amendment ref BM.03.02.03).

The recommendation of the Chief Executive to exclude one amendment

- Amendment Ref BM.04.08.06 – Include lands North-west of Tower within the development boundary of Tower.

was rejected by Council Members, and this amendment was agreed to be made to the plan. All other amendments as published in May 2017 were also agreed to be made to the plan. This amendment had been screened prior to publication of the consultation document on the proposed amendments. No implications for the Natura 2000 network had been identified during that screening process.

5 Habitats Directive Screening Conclusion Statement

Blarney Macroom Municipal District Local Area Plan	
Name And Location Of Natura 2000 Sites Subject To Screening For Appropriate Assessment	0091 Clonakilty Bay SAC 0106 St. Gobnet's Wood SAC 0108 The Gearagh SAC 0364 Kilgarvan Ice House SAC 0365 Killarney National Park, Macgillycuddys Reeks and Caragh River Catchment SAC 1058 Great Island Channel SAC 1230 Courtmacsherry Estuary SAC 1873 Derryclogher (Knockboy) Bog 1890 Mullaghanish Bog 2041 Old Domestic Building, Curraglass Wood SAC 2170 Blackwater River SAC 2171 Bandon River SAC 2315 Glanlough Wood SAC 4030 Cork Harbour SPA 4038 Killarney National Park SPA 4081 Clonakilty Bay SPA 4109 The Gearagh SPA 4162 Mullaghanish to Musheramore SPA 4219 Courtmacsherry Bay SPA
Description Of The Plan	The Blarney Macroom Municipal District Local Area Plan is a strategic plan identifying where development is to be directed and how/where supporting infrastructure is to be provided within the plan area from 2017 to 2023. The plan proposes population targets for settlements within the district and identifies where that development is proposed to be located through its zoning maps and corresponding policy objectives. See Section 2 of this report for a more detailed summary of the plan.
Is The Plan Directly	No

<p>Connected With Or Necessary To The Management Of The Natura 2000 Sites Identified Above</p>	
<p>Are There Other Projects Or Plans That Together With This Plan Could Give Rise To Cumulative Impacts On Any Of The Above Listed Sites.</p>	<p>Possible risks of impact were identified in respect of three sites:</p> <ul style="list-style-type: none"> • St. Gobnet’s Wood • The Gearagh SAC • The Gearagh SPA <p>Other plans that set land use policy, policies relating to agriculture, renewable energy and forestry activity within the catchments of these sites could act ‘in combination’ with policies set out in the Blarney Macroom MD LAP to give rise to negative impacts on these sites. These include <i>inter alia</i>:</p> <p>All Three Sites</p> <ul style="list-style-type: none"> • National Spatial Strategy (Department of Environment, Heritage and Local Government) 2002-2020 • National Development Plan (Department of Environment, Heritage and Local Government) 2007-2013 • National Climate Change Adaptation Framework (2012) • A Resource Opportunity – Waste Management Policy in Ireland (2012) • Smarter Travel – A Sustainable Transport Future 2009-2020 • National Cycle Policy Framework 2009 • People, Place and Policy – Growing Tourism to 2025 • Tourism Development and Innovation - A Strategy for Investment 2016-2022 • Realising our Rural Potential Action Plan for Rural Development 2016 • National Renewable Energy Action Plan 2010 • Harvest 2020 – A Vision for Irish Agri-Food and Fisheries • Forests, Products and People - Irelands forest policy a renewed vision 2014 • Regional Planning Guidelines (South West Regional Authority) 2010-2022 • Cork County Development Plan (Cork County Council) 2014 • Cork County Local Economic and Community Plan 2016 • Growing Tourism in Cork - A Collective Strategy 2016-2020 • Trails for Tourism – A Policy to Maximise the Economic Benefit to Cork County 2015

	<p>St. Gobnet’s Wood</p> <ul style="list-style-type: none"> • No other plans identified. <p>The Gearagh SAC and the Gearagh SPA</p> <ul style="list-style-type: none"> • LEE CFRAMS – <ul style="list-style-type: none"> ○ Lower Lee Cork City Flood Relief Scheme • Regulations and Guidelines for Control of the River Lee, ESB
<p>Assessment Of Significant Effects</p>	
<p>Describe How The Plan (Alone Or In Combination Is Likely To Affect Natura 2000 Sites)</p>	<p>The key issues which were identified through the HDA screening process at the draft plan screening stage to have the potential to give rise to negative effects on Natura 2000 sites were as follows:</p> <p>Parts of St. Gobnet’s Wood SAC lie within the settlement boundary of Ballyvourney. Some of these areas were described to be within existing built up area.</p> <p>Wastewater infrastructure in some of the settlements within the catchment of the Gearagh is not of a sufficient standard to support proposed growth, without posing a risk of impact on water quality in the catchment and potentially within the SAC and SPA.</p> <p>Increased levels of development in settlements within the catchment of the Gearagh, could result in increased levels of surface water run off and possibly result in increased pressure on natural hydrological patterns in rivers feeding the Gearagh system. It was considered that the policies requiring surface water attenuation for some of these settlements were insufficiently clear.</p>
<p>Changes To The Draft Plan To Prevent These Impacts</p>	<p>The settlement boundary of Ballyvourney was altered to omit some areas of St. Gobnet’s Wood from within the town boundary. The open space zoning was extended to incorporate other parts of the SAC which could not be omitted from the town boundary.</p> <p>Wastewater and surfacewater management policies were clarified and strengthened.</p>

Proposed Amendments To Draft Plan	No issues of concern for the Natura 2000 network were identified in respect of proposed amendments to be made to the draft plan. No modifications to any of the proposed amendments were required.
Final Changes To Draft Plan	Modifications were made to two proposed amendments to on foot of the consultation phase for the proposed amendments. These modifications were minor in nature and no implications for the Natura 2000 network were identified to be likely to arise on foot of them being made. All other amendments were adopted as published in May 2017. These had been previously screened to determine whether they could have negative impacts on any Natura 2000 site. No issues of concern were identified. No other modifications or changes were made to the plan at this stage of the process.
List Of Agencies Consulted	The draft plan and proposed amendments to same were referred to all of the relevant Statutory Authorities and were available for consideration by the general public at a number of different stages during the plan making process. Submissions made by Statutory Authorities, groups and members of the public which related to impacts on the Natura 2000 network were considered at every stage of the plan as described in this report. Amendments were made to the plan to address all of the substantive issues raised in these submissions.
Screening Conclusion	On the basis of the screening assessments which were completed at each stage of the plan making process and which are in this document, it is concluded that the Blarney Macroom MD Local Area Plan does not have the potential to give rise to significant negative impacts on any of the Natura 2000 sites listed in this document.
Data Collected To Carry Out The Assessment	
Who Carried Out The Assessment	Planning Policy Unit Cork County Council
Sources Of Data	See references
Level Of Assessment Completed	Screening for Appropriate Assessment
Where Can The Full Results Of The Assessment Be Accessed And Viewed	The full Habitats Directive screening process may be tracked through this report and through the references set out below. All documents are available at www.corkcoco.ie/planning

6 References

6.1 Cork County Council Documents

The following is a list of the main documents which were prepared during the making of the Blarney Macroom Municipal District Local Area Plan. All of these documents are available at www.corkcoco.ie/planning. Background documents and other reports including the reports of the Chief Executive of Cork County Council which was also prepared as part of the plan making process are also available on this website.

Cork County Council Blarney Macroom MD Local Area Plan Documents	
Publication Date	Document Title
14 th December 2015	Blarney Macroom Municipal District Local Area Plan Review Public Consultation Document
15 th April 2016	Proposed Blarney Macroom Municipal District Local Area Plan 2017, Chief Executive's Report on Preliminary Public Consultation Process
16 th November 2016	Draft Blarney Macroom Municipal District Local Area Plan
16 th November 2016	Draft Blarney Macroom Municipal District Environmental Reports <ul style="list-style-type: none"> • Strategic Environmental Assessment Environmental Report • Strategic Flood Risk Assessment • Habitats Directive Screening Report
6 th March 2017	Blarney Macroom Municipal District Local Area Plan Public Consultation Draft, Chief Executive's Opinion on the Issues Raised by Submissions & Recommended Amendments
15 th April 2016	Proposed Blarney Macroom Municipal District Local Area Plan 2017, Chief Executives Report on Preliminary Public Consultation Process
2 nd May 2017	Draft Blarney Macroom Municipal District Local Area Plan Proposed Amendments to the Draft Plan
2 nd May 2017	Blarney Macroom Municipal District Local Area Plan Proposed Amendments to the Draft Plan Environmental Reports <ul style="list-style-type: none"> • Addendum to Strategic Flood Risk Assessment Environmental Report • Strategic Flood Risk Assessment • Changes to the Blarney Macroom Environmental Report • Habitats Directive Screening Report
16 th June 2017	Blarney Macroom Municipal District Local Area Plan 2017, Chief Executives report on Proposed Amendments Public Consultation Process
21 st August 2017	Blarney Macroom Municipal District Local Area Plan, 2017 Volume One – Main Policy Material Volume Two – Environmental Reports <ul style="list-style-type: none"> • Strategic Environmental Assessment Environmental Statement • Habitats Directive Screening Report Volume Three – Map Browser

6.2 NPWS Site Data

Information relating to individual Natura 2000 sites including Article 17 Conservation Assessment Reports for Habitats and Species In Ireland (2013), individual site synopses, Natura 2000 data forms, and information relating to the qualifying features and conservation objectives of individual sites was sourced from the NPWS database (www.NPWS.ie).

6.3 Other References

Guidance used in the preparation of this report included the following:

European Communities, Managing Natura 2000 sites. The provisions of Article 6 of the Habitats Directive 92/43/EEC. European Communities, 2000.

European Communities, Assessment of plans and projects significantly affecting Natura 2000 sites. Methodological guidance on the provisions of Article 6(3) and (4) of the Habitats Directive 92/43/EEC. European Communities, 2001.

Environment, Heritage and Local Government. Appropriate Assessment of Plans and Projects in Ireland. Guidance for Planning Authorities. 2009.