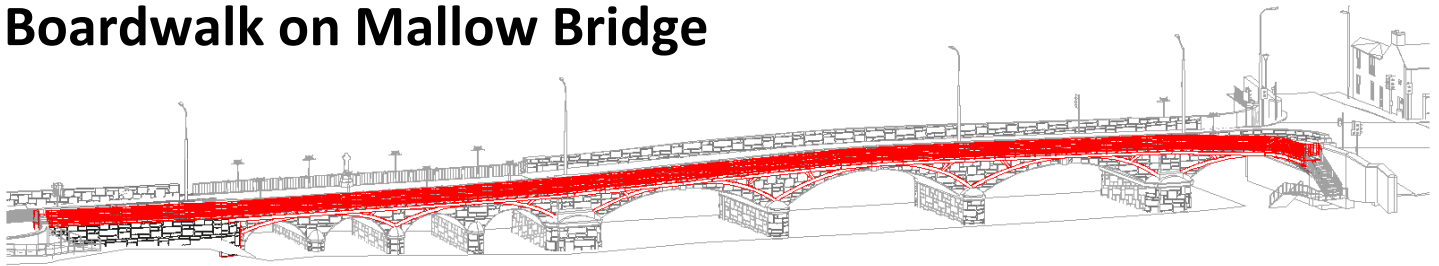




Boardwalk on Mallow Bridge



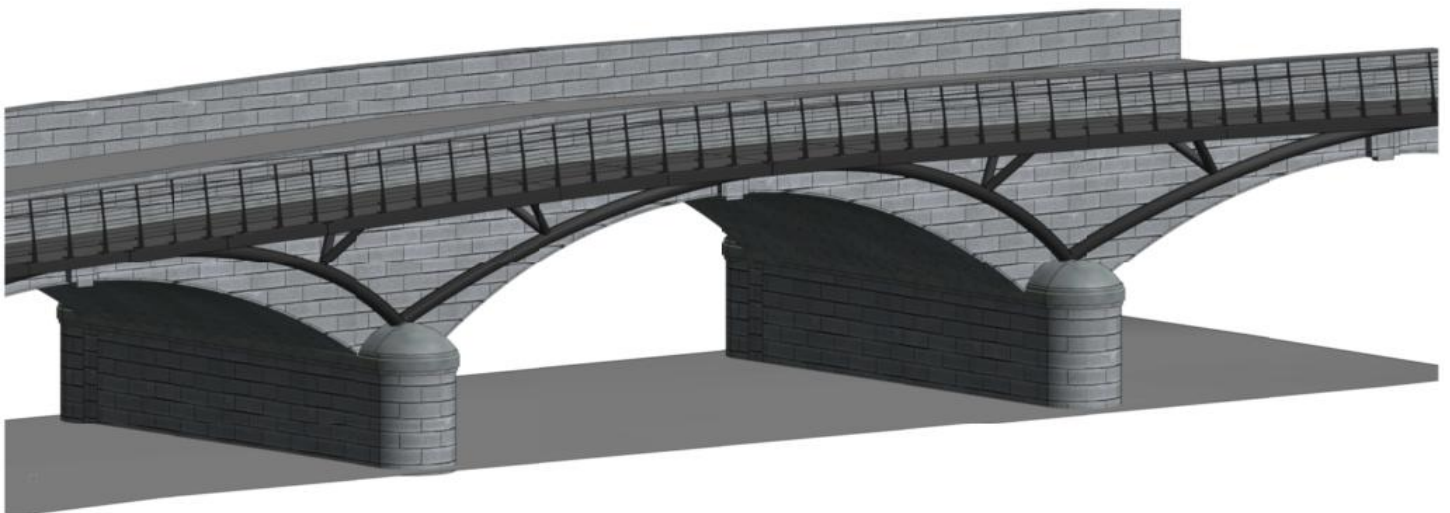
Mallow Bridge is situated on the R620 regional road and spans across the River Blackwater. It serves as a major access route to Mallow Town Centre for pedestrians, cyclists and vehicular traffic. It is proposed to construct a boardwalk on the western spandrel wall of the bridge to accommodate pedestrian traffic. This will facilitate the removal of the existing footpath on the bridge and allow for the incorporation of an additional traffic turning lane to improve vehicular traffic flow across the bridge.

Background:

Mallow Bridge is an eight span masonry arch structure. When the bridge was first constructed in 1712, it originally comprised of fifteen equal span masonry arches. It is thought that eleven of these arches were severely damaged during the Great Flood of 1853 and, for this reason, were demolished and replaced by four cut limestone arches. The four remaining original arches are located on the northern bank of the river and act primarily as flood relief arches.

Mallow Bridge is listed in the National Inventory of Architectural Heritage (Record No.20816010) and also a Recorded Protected Structure (RPS).

Part 8 Planning Approval for the project has been approved by Mallow Town Council in 2012.



3D view of proposed Boardwalk on Mallow Bridge



Cork County Council Comhairle Contae Chorcaí

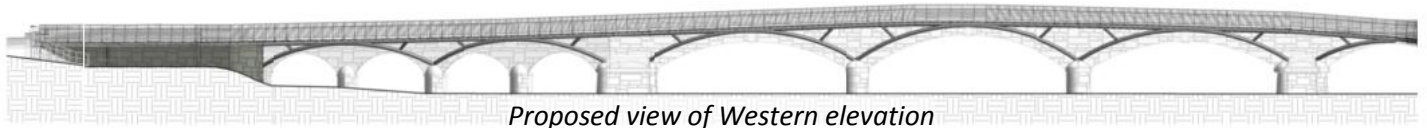
Vision:

Cork County Council is delighted to have the opportunity to develop a Boardwalk on Mallow Bridge. The Boardwalk is funded by Cork County Council and Co-financed by the European Regional Development Fund through the EU through the Designated Urban Centres Grant Scheme. The Boardwalk will allow for additional traffic turning lanes on the bridge which will greatly improve traffic flow in Mallow.

Traffic studies and modelling show that the Boardwalk and associated extra traffic lane will produce significant journey time reductions with associated sustainability, environmental and economic benefits to Mallow.

The Boardwalk will also provide for a significant shared space for cyclists and pedestrians and will reinforce the link between the residential southern area of Mallow and the town centre. The Boardwalk will improve safety for pedestrians, cyclists and other vulnerable road users on the bridge.

The works will include the relocation of the existing Republican War Monument from its existing location on the bridge parapet to a safer location in a new amenity area on the northern approach to the bridge. This will allow for the monument to be viewed in a purpose-built area separated from live vehicular traffic.



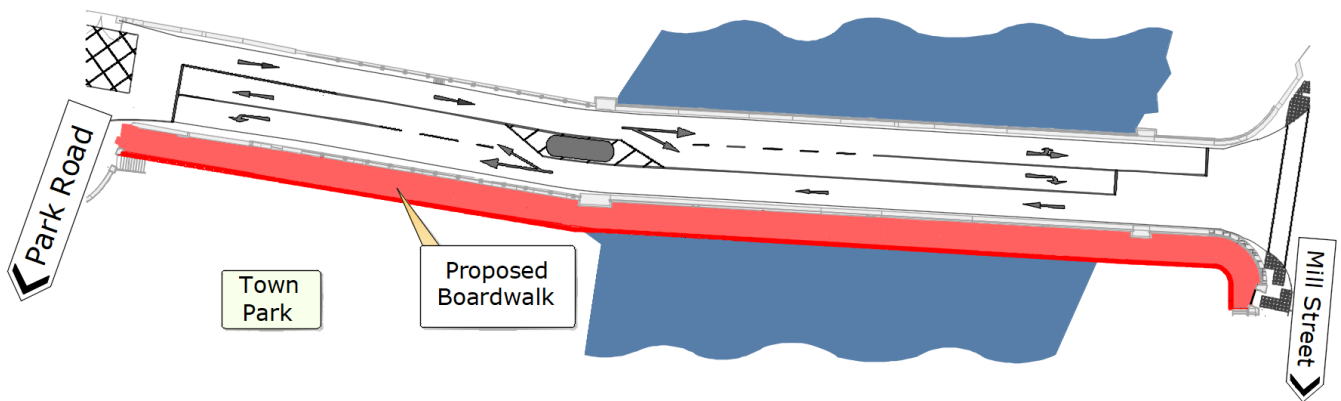
Proposed view of Western elevation

Design & Construction:

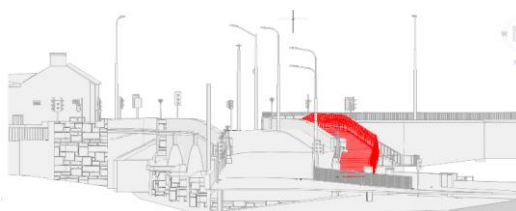
The boardwalk has been designed to minimise works between the bridge parapets thereby reducing traffic disruption during the construction phases. The Boardwalk has also been designed to minimise visual impact on the bridge.

It is envisaged that works will commence in June 2019 and take approx 4 to 5 months to complete.

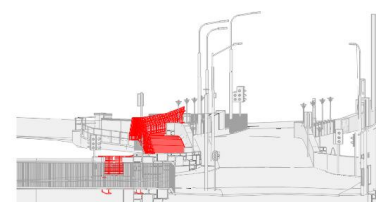
Night time works will be carried out at stages of the construction to minimise traffic disruption. Some of the night time works will require a full road closure over the bridge with diversions in place. In addition it is envisaged that a full time (day & night) lane closure and associated detour will be necessary for a period of the works, this will be confined to the school summer holiday period where possible. For lane closures traffic travelling out of town (southwards) will be allowed to traverse over the bridge while all other traffic will be detoured Via the R619 & N20. Road Closures and Detours will be updated on Map Alerter at www.mapalerter.com, Any queries email mallowboardwalk@corkcoco.ie



Proposed Layout Plan



Proposed Southbound Perspective



Proposed Northbound Perspective